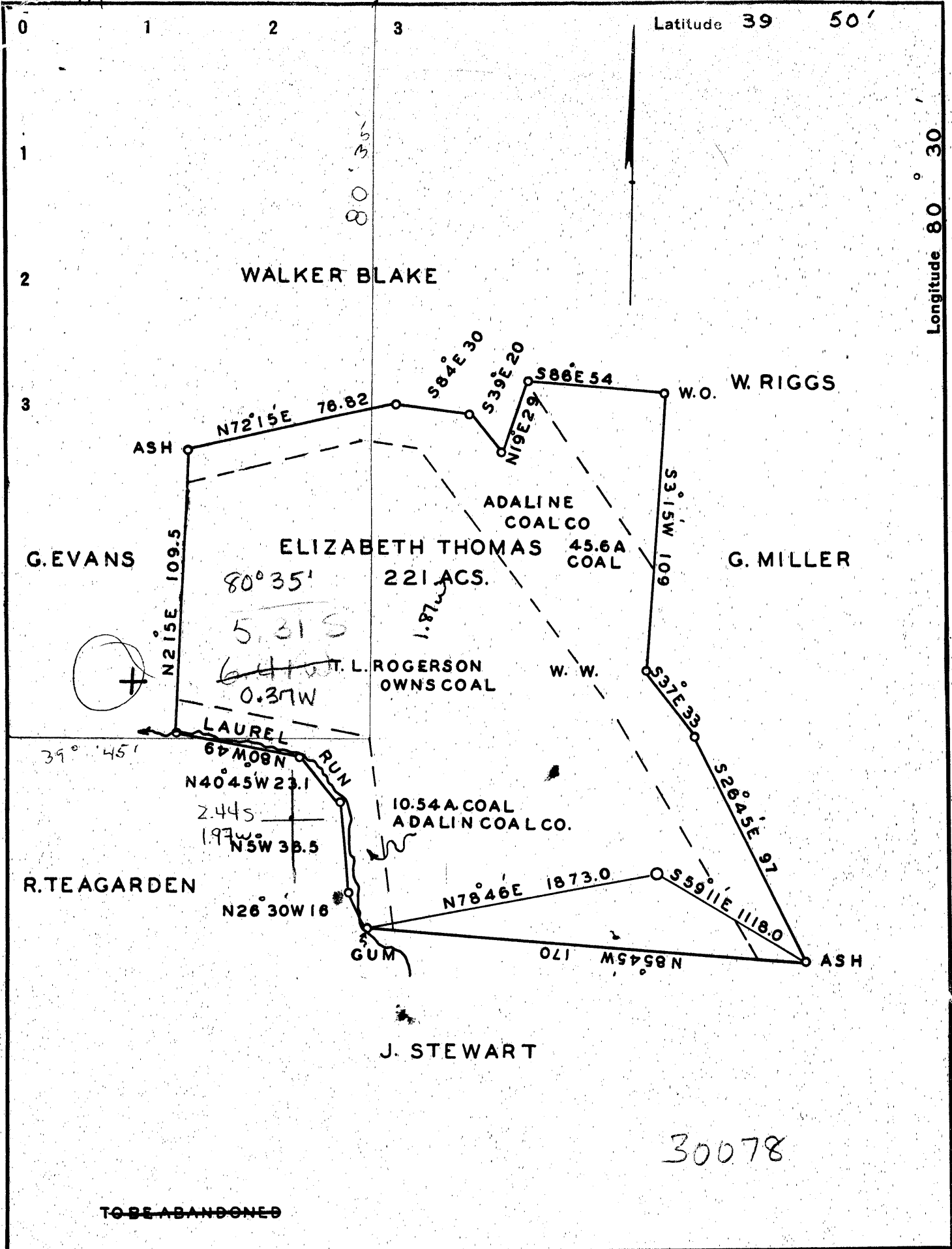


39°47'38"

m



30078

TO BE ABANDONED

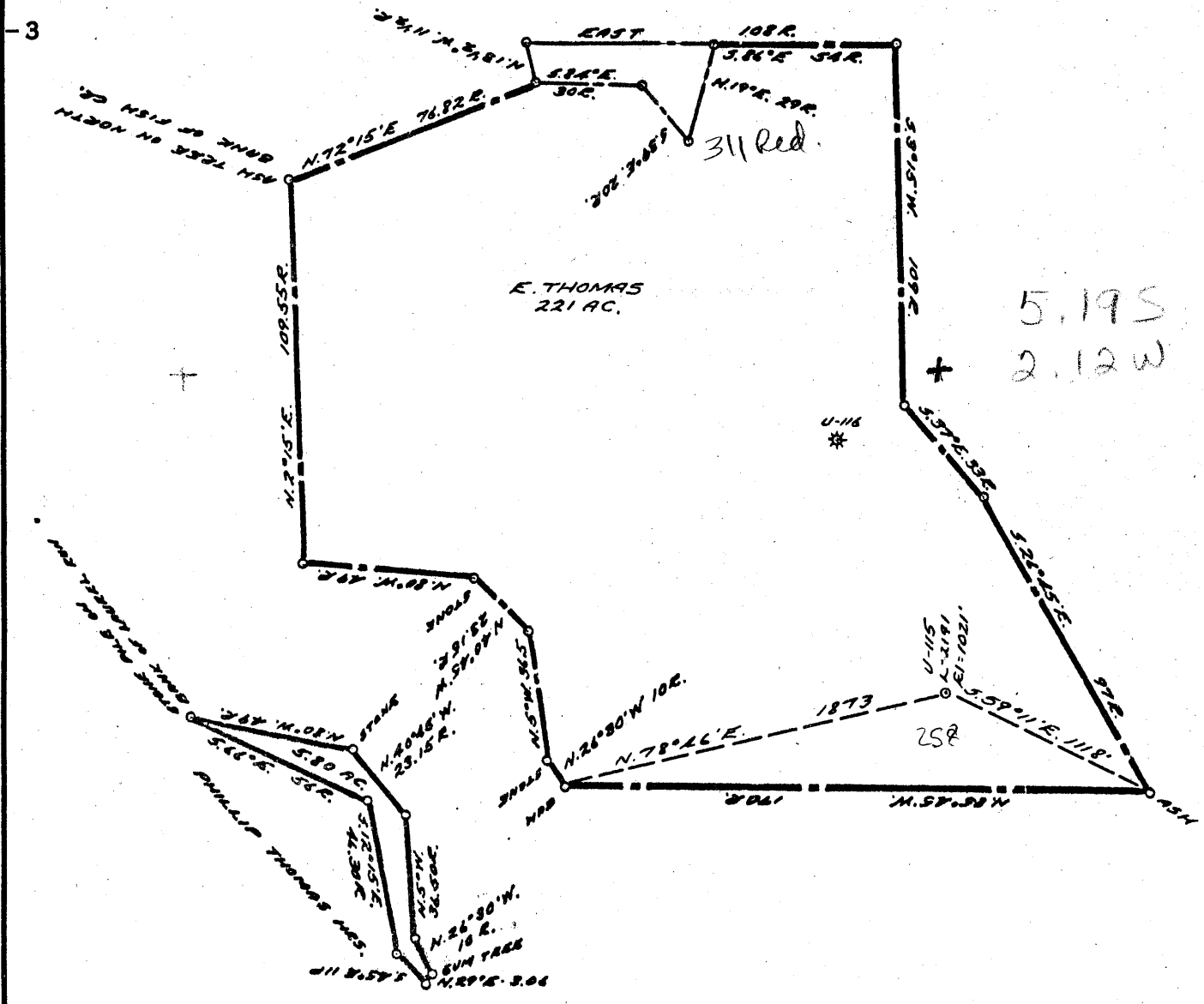
Company	UNION GASOLINE & OIL CORPORATION
Address	RILEY LAW BLDG WHEELING W.VA.
Farm	ELIZABETH THOMAS
Tract	Acres 221 Lease No. 2286
Well (Farm) No.	1 Serial No. 115 / 219
Elevation (Spirit Level)	1020.0
Quadrangle	CAMERON - S.C.
County	MARSHALL District LIBERTY
Engineer	F. F. Murdock
Engineer's Registration No.	
File No.	Drawing No. Y-7-710
Date	JULY 1 1937 Scale 1" = 800'

STATE OF WEST VIRGINIA  
 DEPARTMENT OF MINES  
 OIL AND GAS DIVISION  
 CHARLESTON

**WELL LOCATION MAP**

FILE NO. *Mars-258-Redrill*  
 THE MANUFACTURERS LGE. & HEAT CO  
 + Denotes location of well on United States Topographic Maps, scale 1 to 62,500, latitude and longitude lines being represented by border lines as shown.  
 - Denotes one inch spaces ... border line of original tracing.

9-0 25



COAL OWNED BY REDRILL

NEW LOCATION.....

DRILL DEEPER.....

ABANDONMENT.....

See - Y-7-710

COMPANY THE MANUFACTURERS LIGHT & HEAT

ADDRESS 800 UNION TRUST BLDG. PGH. PA.

FARM ELIZABETH THOMAS

TRACT \_\_\_\_\_ ACRES 227 LEASE NO. 26438

WELL (FARM) No. 1 SERIAL No. 2191

ELEVATION (SPIRIT LEVEL) 1020'

QUADRANGLE CAMERON

COUNTY MARSHALL DISTRICT LIBERTY

ENGINEER Robert M. Hoill

ENGINEER'S REGISTRATION No. 361-E

FILE No. \_\_\_\_\_ DRAWING No. Y-15-587

DATE 29 MAY 1957 SCALE 1" = 800'

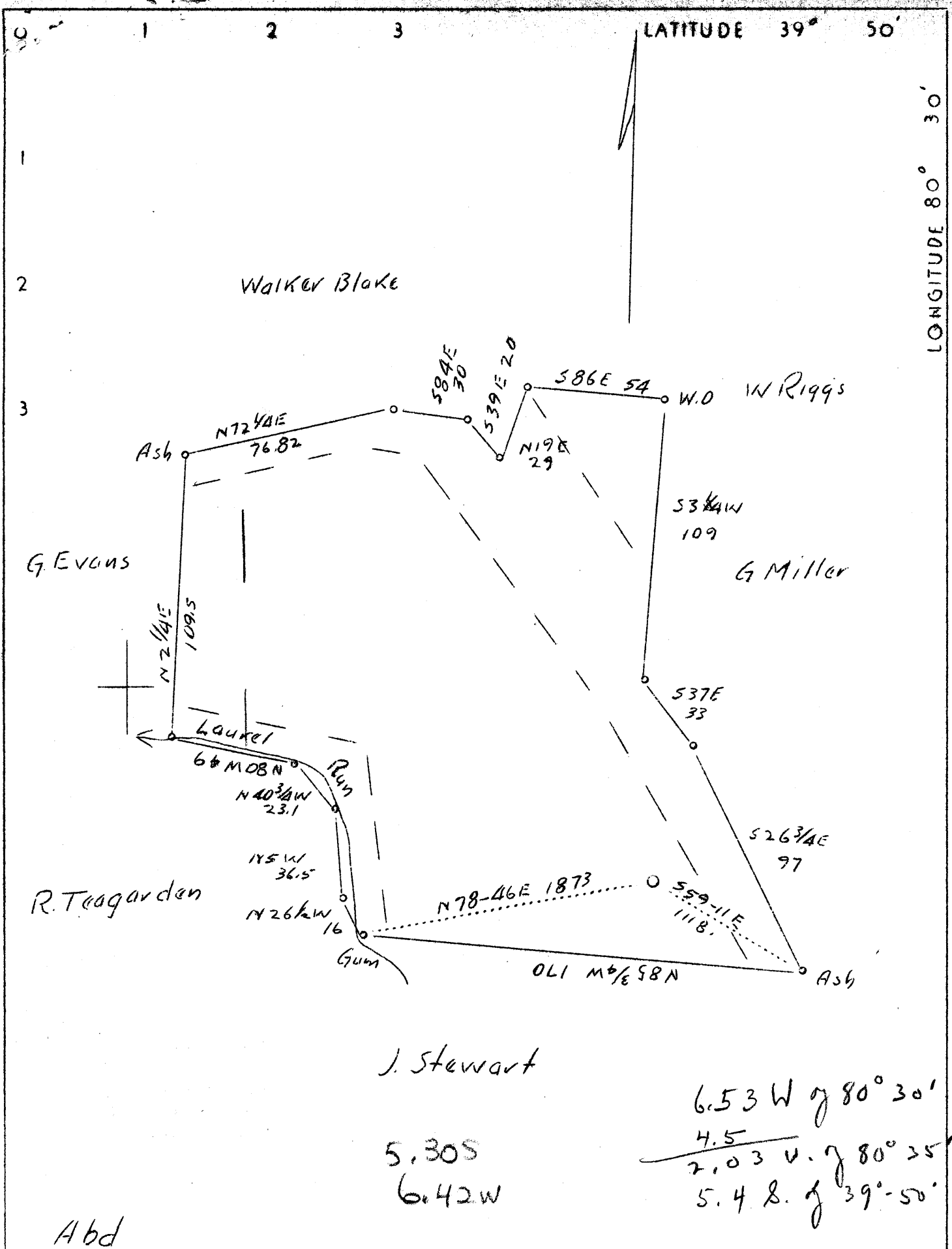
STATE OF WEST VIRGINIA  
 DEPARTMENT OF MINES  
 OIL AND GAS DIVISION  
 CHARLESTON

### WELL LOCATION MAP

FILE No. MARS ~~312 REDRILL~~  
258-1957 book

+ DENOTES LOCATION OF WELL ON UNITED STATES TOPOGRAPHIC MAPS, SCALE 1 TO 62,500, LATITUDE AND LONGITUDE LINES BEING REPRESENTED BY BORDER LINES AS SHOWN.

- DENOTES ONE INCH SPACES ON BORDER LINE OF ORIGINAL TRACING.



Company Union Gasoline & Oil Corp.  
 Address Riley Law Bldg., Wheeling, W.Va.  
 Farm Elizabeth Thomas  
 Tract Acres 221 Lease No. 2286  
 Well (Farm) No. 1 Serial No. 115  
 Elevation (Spirit Level) 1020'  
 Quadrangle Cameron *St*  
 County Marshall District Liberty  
 Engineer F.F. Murdock  
 Engineer's Registration No.  
 File No. Drawing No. Y-7-710  
 Date July 1, 1937 Scale 1"=800'

STATE OF WEST VIRGINIA  
 Department of Mines  
 OIL AND GAS DIVISION  
 CHARLESTON

WELL LOCATION MAP  
 258  
 File No. MARS-78A

+ Denotes location of well on United States Topographic Maps, scale 1 to 62,500, latitude and longitude lines being represented by border lines as shown.

— Denotes one inch spaces on border line of original tracing.



STATE OF WEST VIRGINIA  
DEPARTMENT OF MINES  
OIL AND GAS DIVISION

Quadrangle Cameron

WELL RECORD

*Storage*

Permit No. MARS-258-R

Oil or Gas Well GAS  
(KIND)

Company <u>THE MANUFACTURERS LIGHT &amp; HEAT COMPANY</u>	Casing and Tubing	Used in Drilling	Left in Well	Packers
Address <u>800 Union Trust Building, Pgh. 19, Pa.</u>	Size			Kind of Packer
Farm <u>Elizabeth Thomas</u> Acres <u>227</u>	16			
Location (waters) _____	18			
Well No. <u>2191</u> Elev. <u>1020'</u>	10"		<u>165'</u>	Size of
District <u>Liberty</u> County <u>Marshall</u>	8 1/4"		<u>1134'</u>	Depth set
The surface of tract is owned in fee by _____	6"			
Address _____	5 3/16 "		<u>1801'</u>	
Mineral rights are owned by _____	3			Perf. top
Address _____	2			Perf. bottom
Drilling commenced <u>March 26, 1957</u>	Liners Used			Perf. top
Drilling completed <u>September 26, 1957</u>				Perf. bottom
Date Shot _____ From _____ To _____				
With _____				
Open Flow _____ /10ths Water in _____ Inch				
_____ /10ths Merc. in _____ Inch				
Volume _____ Cu. Ft.				
Rock Pressure _____ lbs. _____ hrs.				
Oil _____ bbls., 1st 24 hrs.				
Fresh water _____ feet _____ feet				
Salt water _____ feet _____ feet				
	CASING CEMENTED _____ SIZE _____ No. Ft. _____ Date _____			
	COAL WAS ENCOUNTERED AT _____ FEET _____ INCHES			
	_____ FEET _____ INCHES _____ FEET _____ INCHES			
	_____ FEET _____ INCHES _____ FEET _____ INCHES			

Formation	Color	Hardness Scale THICKNESS	Top	Bottom	Oil, Gas or Water	Depth Found	Remarks
✓ Pittsburgh Coal		10'	774	784	All pipe measured over threads. Run 165' of 10-3/4" Casing Sm.Gr.H-32# on a steel shoe set at 163' and did not cement. Run 1134' of 8-5/8" Casing Sm.Gr.J-24# on a steel shoe set at 1125'. Cemented with 225 bags cement and 2 bags Aquagel. Water circulated back to surface but no return of cement. Run 1801' of 5-1/2" Casing Sm.Gr.J-17# on a steel shoe set at 1787' and cemented with 325 bags cement, 15.4 lbs per. gallon. Good return of cement at surface. A sufficient amount of cement returned from the 5-1/2" casing to finish filling back to surface between 8" and 10" casing. Filled hole back from a total depth of 2609' to 1804' with 160 bags cement. Cemented through 2" tubing. Installed Six (6) 5 1/2" x 8 1/4" Casing Centralizers on the 5-1/2" casing a 33'-203'-610'-1082'-1421' and 1786'. Schlumberger perforated with Expendable Shaped Chg. Perf. Ty. A (Shooting Device) from 1787' to 1804' with 110 shots.		
✓ Maxton Sand		17'	1787'	1804'			
Total Depth				1804'			

325