

0 1 2 3

Latitude 39° 50'

394730

1

2

3

Longitude 80° 35'

WALKER BLAKE

G. EVANS

W. RIGGS

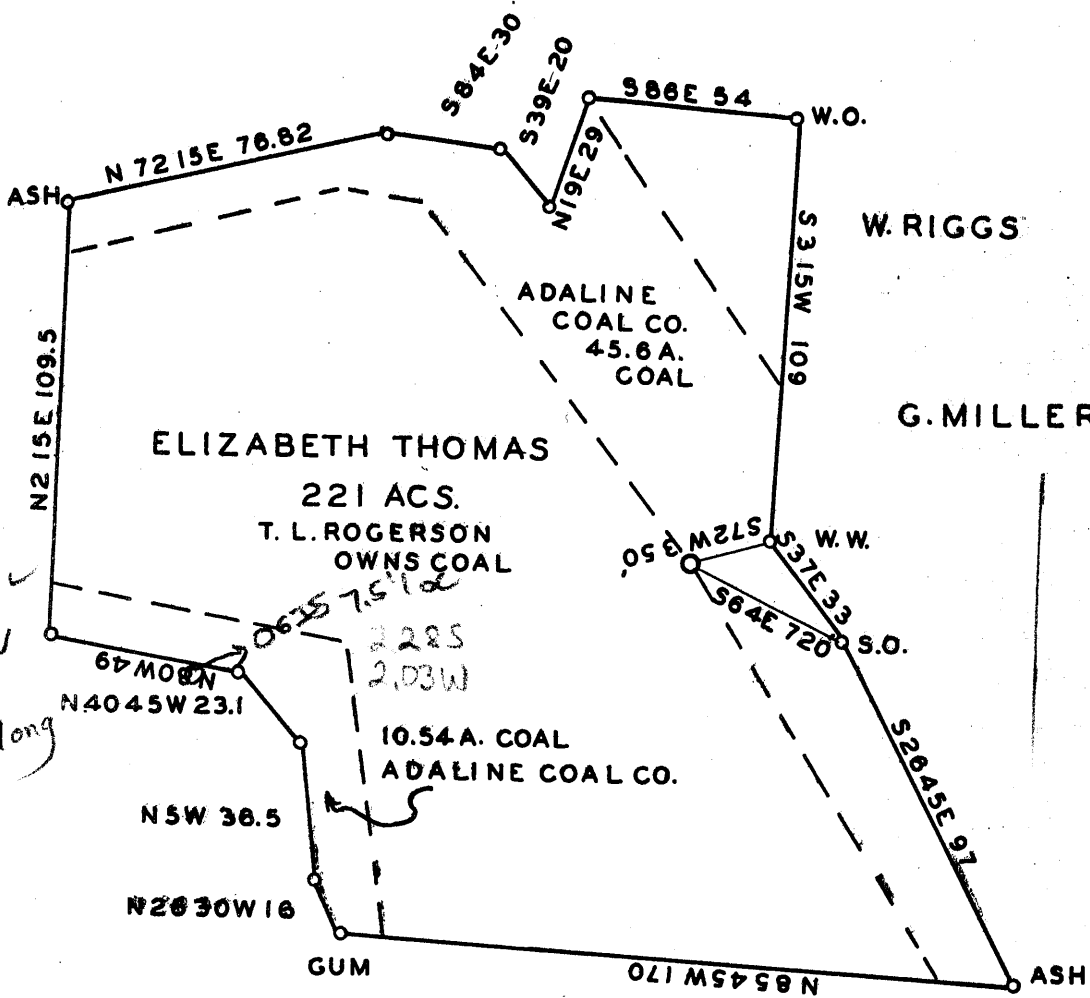
G. MILLER

J. STEWART

TO BE ABANDONED REDRILL

Calc 15' loc

5.165 8950  
2.03W 8035



Company UNION GASOLINE & OIL CORPORATION

Address RILEY LAW BLDG WHEELING W.VA.

Farm ELIZABETH THOMAS

Tract \_\_\_\_\_ Acres 221 Lease No. 2286

Well (Farm) No. 2 Serial No. 116

Elevation (Spirit Level) 880.0

Quadrangle CAMERON +15' SC

County MARSHALL District LIBERTY

Engineer F. F. Murdock

Engineer's Registration No. \_\_\_\_\_

File No. \_\_\_\_\_ Drawing No. Y-7-711

Date JULY 2, 1937 Scale 1" = 800'

STATE OF WEST VIRGINIA  
DEPARTMENT OF MINES  
OIL AND GAS DIVISION  
CHARLESTON

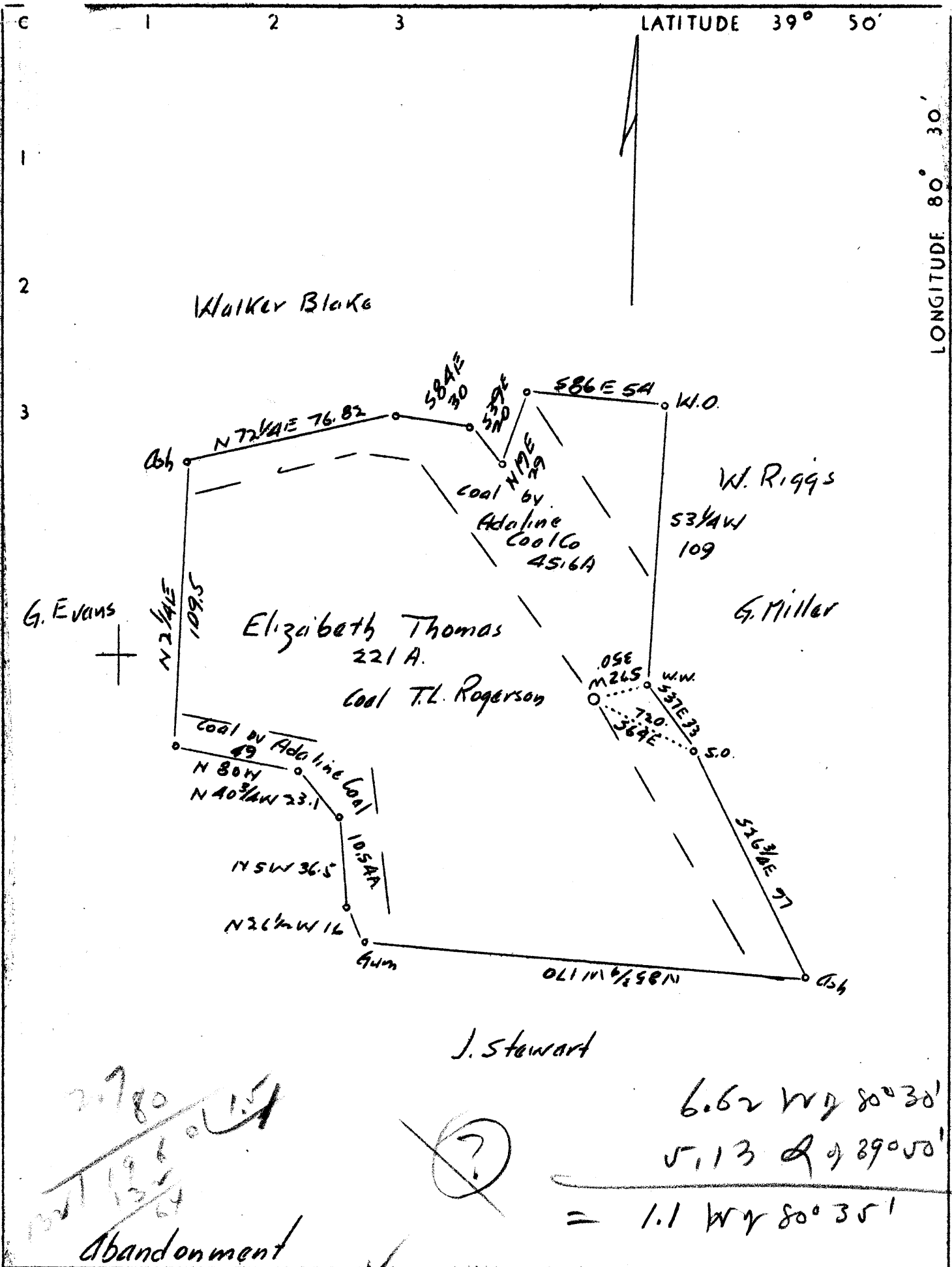
WELL LOCATION MAP

FILE NO. MARS-256 - STORAGE

NOW: MANUFACTURERS LGT. & HEAT CO

+ Denotes location of well on United States Topographic Maps, scale 1 to 62,500, latitude and longitude lines being represented by border lines as shown.

- Denotes one inch spaces on border line of original tracing.



2780  
 135  
 Abandonment

6.62 W by 80° 30'  
 5.13 Q by 89° 00'  
 = 1.1 W by 80° 35'

|                             |                                   |            |                |
|-----------------------------|-----------------------------------|------------|----------------|
| Company                     | Union Gasoline & Oil Corp.        |            |                |
| Address                     | Riley Law Bldg., Wheeling, W. Va. |            |                |
| Farm                        | Elizabeth Thomas                  |            |                |
| Tract                       | Acres                             | 221        | Lease No. 2286 |
| Well No. (Farm)             | 2                                 | Serial No. | 116            |
| Elevation                   | (Spirit Level)                    | 880        |                |
| Quadrangle                  | Cameron                           |            |                |
| County                      | Marshall                          | District   | Liberty        |
| Engineer                    | F.F. Murdock                      |            |                |
| Engineer's Registration No. |                                   |            |                |
| File No.                    | Drawing No. Y-7-711               |            |                |
| Date                        | July 2, 1937 Scale 1"=800'        |            |                |

STATE OF WEST VIRGINIA  
 Department of Mines  
 OIL AND GAS DIVISION  
 CHARLESTON  
 was:  
 WELL LOCATION MAP  
 File No. MARS-73A  
 now: MARS-256-Red

+ Denotes location of well on United States Topographic Maps, scale 1 to 62,500, latitude and longitude lines being represented by border lines as shown. (Storage)

— Denotes one inch spaces on border line of original tracing.

Liberty District, Marshall County, W. Va.

By United Gasoline & Oil Corp., 209 Riley Law Bldg., Wheeling, W. Va.

On 221 acres.

Elevation, 880' L.

Surface owned by H. H. Thomas, Cameron, W. Va., and minerals by  
Union Gasoline & Oil Corp., Wheeling, W. Va.

Drilling commenced April 18, 1920; completed, May 29, 1920.

Shot June 8, 1920.

10" casing, 163' (pulled); 8 $\frac{1}{4}$ ", 986'; 6 $\frac{3}{8}$ ", 1671'.

Coal was encountered at 260-266, 465-473, and 570-577'.

Oil well. Abandonment reported to Dept. of Mines July 13, 1937.

Record to RCT from D. G. Courtney 2-1-38.

|                                     | Top. | Bottom. |
|-------------------------------------|------|---------|
| Slate                               | 150  | - 200   |
| Fairview (Waynesburg) Coal          | 260  | - 266   |
| Mapletown (Sewickley) Coal          | 465  | - 473   |
| Pittsburgh Coal (show of gas, 575') | 570  | - 577   |
| Red rock                            | 700  | - 755   |
| Little Dunkard Sand                 | 980  | - 992   |
| Big Dunkard Sand                    | 1090 | - 1140  |
| Gas Sand                            | 1165 | - 1208  |
| First Salt Sand                     | 1365 | - 1400  |
| Second Salt Sand                    | 1420 | - 1468  |
| Maxton Sand                         | 1468 | - 1580  |
| Little Line                         | 1635 | - 1642  |
| Pencil Cave                         | 1642 | - 1650  |
| Big Line                            | 1650 | - 1695  |
| Big Injun Sand (show of oil, 1795') | 1695 | - 1945  |
| 50-Ft. Sand                         | 2340 | - 2355  |
| Gordon Stray Sand                   | 2515 | - 2521  |
| Gordon Sand (gas and oil, 2553')    | 2521 | - 2550  |
| Fourth Sand (gas and oil, 2655')    | 2610 | - 2658  |
| Fifth Sand                          | 2665 | - 2670  |
| Total depth                         |      | 2725    |

WEST VIRGINIA DEPARTMENT OF MINES  
OIL AND GAS DIVISION

146

MAR-73-A

WELL RECORD

Permit No. Drilled in 1920 (73-a) Oil or Gas Well Oil  
(Kind)

Company Union Gasoline & Oil Corp.  
Address 209 Riley Law Building, Wheeling, WVa  
Farm Elizabeth Thomas Acres 221  
Location (waters) \_\_\_\_\_  
Well No. U-116 Elev. 880  
District Liberty County Marshall  
The surface of tract is owned in fee by H. H. Thomas Address Cameron, W. Va.  
Mineral rights are owned by Union Gasoline & Oil Corporation Address Wheeling, WVa.  
Drilling commenced April 18th, 1920  
Drilling completed May 29th, 1920  
Date shot June 8, 1920 Depth of shot \_\_\_\_\_  
Open Flow /10ths Water in \_\_\_\_\_ Inch  
/10ths Merc. in \_\_\_\_\_ Inch  
Volume \_\_\_\_\_ Cu. Ft.  
Rock Pressure \_\_\_\_\_ lbs. \_\_\_\_\_ hrs.  
Oil \_\_\_\_\_ bbls., 1st 24 hrs.  
Fresh water \_\_\_\_\_ feet \_\_\_\_\_ feet  
Salt water \_\_\_\_\_ feet \_\_\_\_\_ feet

| Casing and Tubing | Used in Drilling | Left in Well | Packers        |
|-------------------|------------------|--------------|----------------|
| Size              |                  |              |                |
| 16                |                  |              | Kind of Packer |
| 13                |                  |              |                |
| 10                | <u>163</u>       |              | Size of        |
| 8 1/4             | <u>986</u>       | <u>986</u>   |                |
| 6 5/8             | <u>1671</u>      | <u>1671</u>  | Depth set      |
| 5 3/16            |                  |              |                |
| 3                 |                  |              | Perf. top      |
| 2                 |                  |              | Perf. bottom   |
| Liners Used       |                  |              | Perf. top      |
|                   |                  |              | Perf. bottom   |

CASING CEMENTED \_\_\_\_\_ SIZE \_\_\_\_\_ No. FT. \_\_\_\_\_ Date \_\_\_\_\_  
COAL WAS ENCOUNTERED AT 260 FEET 72 INCHES  
465 FEET 96 INCHES 570 FEET 84 INCHES  
\_\_\_\_\_ FEET \_\_\_\_\_ INCHES \_\_\_\_\_ FEET \_\_\_\_\_ INCHES

| Formation        | Color | Hard or Soft | Top  | Bottom | Oil Gas or Water | Depth Found | Remarks |
|------------------|-------|--------------|------|--------|------------------|-------------|---------|
| Slate            |       |              | 150  | 200    |                  |             |         |
| Fairview Coal    |       |              | 260  | 266    |                  |             |         |
| Mapletown Coal   |       |              | 465  | 473    |                  |             |         |
| Pittsburgh Coal  |       |              | 570  | 577    | Show of gas      | 575         |         |
| Red Rock         |       |              | 700  | 755    |                  |             |         |
| Little Dunkard   |       |              | 980  | 992    |                  |             |         |
| Big Dunkard      |       |              | 1090 | 1140   |                  |             |         |
| Gas Sand         |       |              | 1165 | 1208   |                  |             |         |
| First Salt Sand  |       |              | 1365 | 1400   |                  |             |         |
| Second Salt Sand |       |              | 1420 | 1468   |                  |             |         |
| Maxon Sand       |       |              | 1468 | 1580   |                  |             |         |
| Little Lime      |       |              | 1635 | 1642   |                  |             |         |
| Pencil Cave      |       |              | 1642 | 1650   |                  |             |         |
| Big Lime         |       |              | 1650 | 1695   |                  |             |         |
| Big Injun        |       |              | 1695 | 1945   | Show of oil      | 1795        |         |
| Fifty-Foot Sand  |       |              | 2340 | 2355   |                  |             |         |
| Gordon Stray     |       |              | 2515 | 2521   |                  |             |         |
| Gordon Sand      |       |              | 2521 | 2550   |                  |             |         |
| Fourth Sand      |       |              | 2610 | 2658   | Gas & Oil        | 2553        |         |
| Fifth Sand       |       |              | 2665 | 2670   |                  |             |         |
| Total depth      |       |              |      | 2725   |                  |             |         |



| Formation | Color | Hard or Soft | Top | Bottom | Oil, Gas or Water | Depth Found | Remarks |
|-----------|-------|--------------|-----|--------|-------------------|-------------|---------|
|           |       |              |     |        |                   |             |         |

Date July 13th, 1937

APPROVED UNION GASOLINE & OIL CORPORATION Owner

By J. Wallace  
 (Title) **Superintendent**