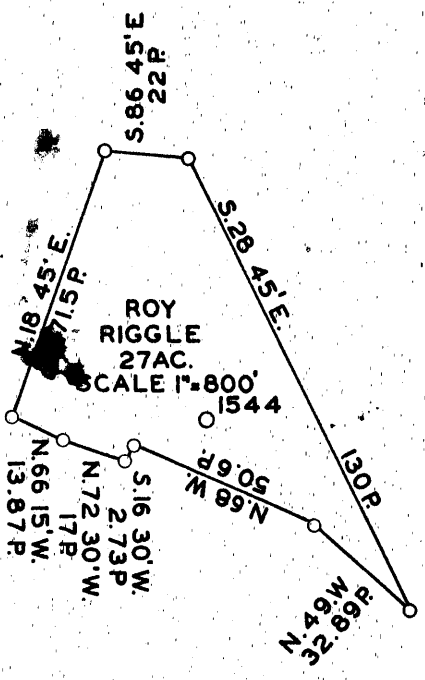
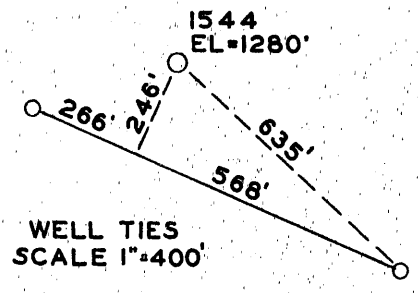
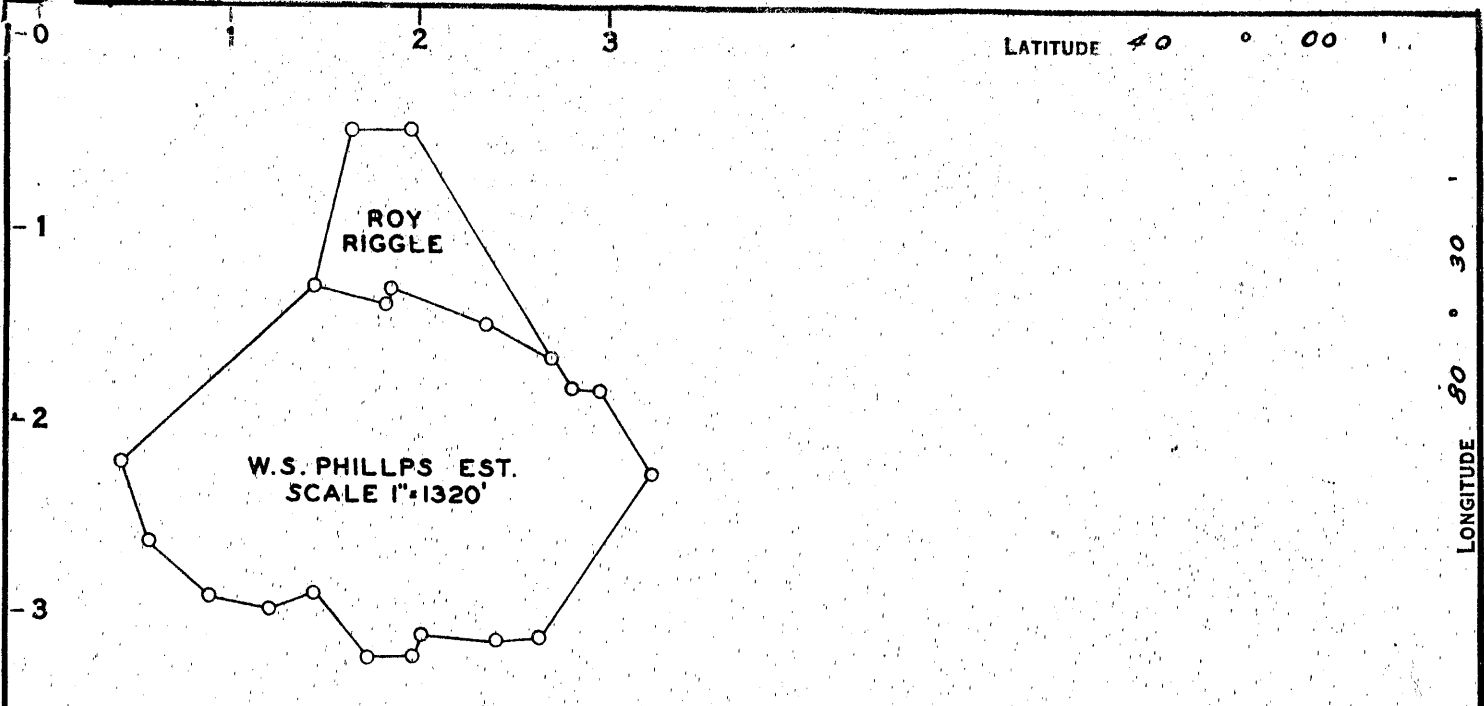


39° 57' 30"

LATITUDE 40 ° 00 ' 10

LONGITUDE 80 ° 30 ' 10



5.49 S ✓  
16.7 W

+

2.79s  
1.72w

COAL OWNED BY \_\_\_\_\_  
*Storage* x  
 NEW LOCATION...   
 DRILL DEEPER...   
 ABANDONMENT...

COMPANY The Manufacturers Light & Heat  
 ADDRESS 800 Union Trust Bldg. Pgh. Pa.  
 FARM Roy Riggle  
 TRACT \_\_\_\_\_ ACRES 27 LEASE No. 27246  
 WELL (FARM) No. 1 SERIAL No. 1544  
 ELEVATION (SPIRIT LEVEL) 1280'  
 QUADRANGLE Cameron  
 COUNTY Marshall DISTRICT Webster  
 ENGINEER A. S. Streator  
 ENGINEER'S REGISTRATION No. 9442  
 FILE No. \_\_\_\_\_ DRAWING No. 4-13-943  
 DATE 25 Feb. 1953 SCALE 1"=800'

STATE OF WEST VIRGINIA  
 DEPARTMENT OF MINES  
 OIL AND GAS DIVISION  
 CHARLESTON

### WELL LOCATION MAP

FILE No. MARS-254 ✓

+ DENOTES LOCATION OF WELL ON UNITED STATES TOPOGRAPHIC MAPS, SCALE 1 TO 62,500. LATITUDE AND LONGITUDE LINES BEING REPRESENTED BY BORDER LINES AS SHOWN.

- DENOTES ONE INCH SPACES ON BORDER LINE OF ORIGINAL TRACING.

9-0 1668 22



STATE OF WEST VIRGINIA  
DEPARTMENT OF MINES  
OIL AND GAS DIVISION

*Cameron*

WELL RECORD

Permit No. MARS-254

Oil or Gas Well Stop  
(KIND)

Company THE MANUFACTURERS LIGHT AND HEAT COMPANY  
Address 800 UNION TRUST BUILDING, PGH., PENNA.  
Farm Roy Riggles Acres 27  
Location (waters) \_\_\_\_\_  
Well No. 1544 Elev. 1280'  
District Webster County Marshall  
The surface of tract is owned in fee by \_\_\_\_\_  
Address \_\_\_\_\_  
Mineral rights are owned by \_\_\_\_\_  
Address \_\_\_\_\_  
Drilling commenced June 18, 1953  
Drilling completed September 21, 1953  
Date Shot \_\_\_\_\_ From \_\_\_\_\_ To \_\_\_\_\_  
With \_\_\_\_\_

Casing and Tubing	Used in Drilling	Left in Well	Packers
Size			
16			Kind of Packer
18	142'	142'	
10	775'	775'	Size of
8 1/4	909'	909'	
6 3/8	1864'	1864'	Depth set
5 3/16			
3			Perf. top
2			Perf. bottom
Liners Used			Perf. top
			Perf. bottom

Open Flow 107 10ths Water in 3" Inch  
/10ths Merc. in \_\_\_\_\_ Inch  
Volume 722,876 Cu. Ft.  
Rock Pressure 629 lbs. 24 hrs.  
Oil \_\_\_\_\_ bbls., 1st 24 hrs.  
Fresh water \_\_\_\_\_ feet  
Salt water \_\_\_\_\_ feet

CASING CEMENTED \_\_\_\_\_ SIZE \_\_\_\_\_ No. Ft. \_\_\_\_\_ Date \_\_\_\_\_  
COAL WAS ENCOUNTERED AT 645 FEET \_\_\_\_\_ INCHES  
738 FEET \_\_\_\_\_ INCHES FEET \_\_\_\_\_ INCHES  
FEET \_\_\_\_\_ INCHES FEET \_\_\_\_\_ INCHES

Formation	Color	Hard or Soft	Top	Bottom	Oil, Gas or Water	Depth Found	Remarks
✓ Mapletown Coal			645	650	13" Casing cemented in with 125 bags cem.		
✓ Pittsburgh Coal			738	745	10" casing cemented in with 200 " "		
✓ Little Dunkard Sand			1120	1140	8 1/4" casing cemented in with 150 " "		
✓ Big Dunkard Sand			1215	1247	6-5/8" casing cemented in with 160 bags		
✓ Stray Sand			1257	1330			
✓ Gas Sand			1408	1457	909' or 8 1/4" casing screwed on 382' of old		
✓ Salt Sand			1650	1710	8 1/4" casing which was in hold, which makes		
✓ Maxon Sand			1738	1789	a total of 1291' of 8 1/4" in well		
✓ Big Lime			1800	1835			
✓ Big Injun			1835		Gas at 1925 to 1930--722,876 cu.ft.		
Total Depth				2060			

375

This well was plugged in 1915, cleaned out again and reconditioned into storage well as to above record.

