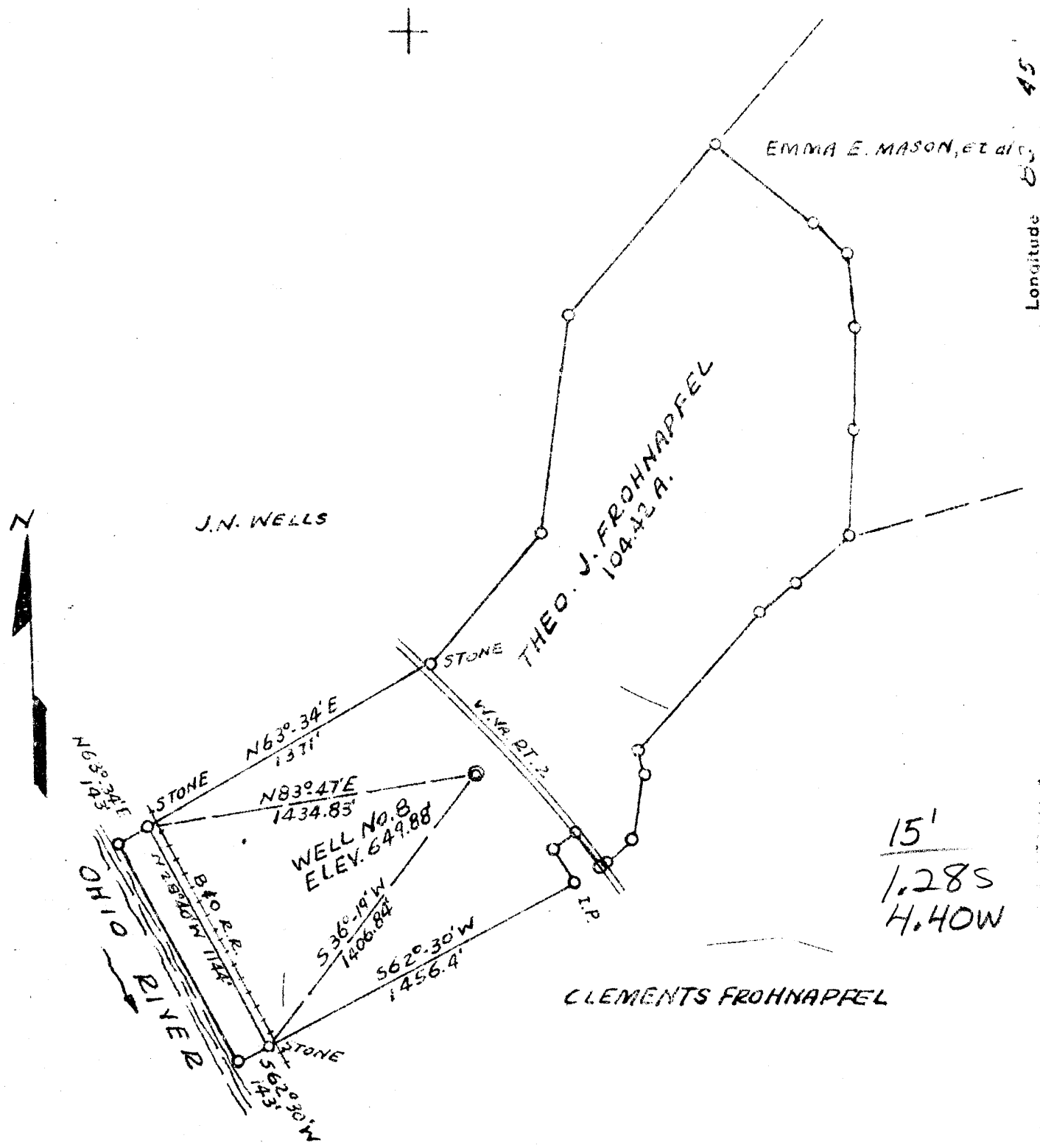


Latitude 39° 45'

Longitude 80° 45'



New Location
 Drill Deeper
 Abandonment

Company COLUMBIA-SOUTHERN CHEM. COR.
 Address NEW MARTINSVILLE, W.VA.
 Farm THEO. J. FROHNAPFEL
 Tract _____ Acres 104.42 Lease No. _____
 Well (Farm) No. 8 Serial No. _____
 Elevation (Spirit Level) 649.88'
 Quadrangle NEW MARTINSVILLE
 County MARSHALL District FRANKLIN
 Engineer C.E. Minor
 Engineer's Registration No. 1712
 File No. _____ Drawing No. 5-40348-6
 Date 10-30-51 Scale 1" = 600'

STATE OF WEST VIRGINIA
 DEPARTMENT OF MINES
 OIL AND GAS DIVISION
 CHARLESTON

WELL LOCATION MAP

FILE NO. MARS-228

Case 051611952-101006

+ Denotes location of well on United States Topographic Maps, scale 1 to 62,500, latitude and longitude lines being represented by border lines as shown.

- Denotes one inch spaces on border line of original tracing.