

COAL OWNED BY Everett E Moore
Moundsville W. Va.

NEW LOCATION
 DRILL DEEPER
 ABANDONMENT Done 3/19/71

COMPANY The Manufacturers Light & Heat Co
 ADDRESS 800 Union Trust Bldg. Pittsburgh Pa.
 FARM May Elder
 TRACT _____ ACRES 104 LEASE No. 19405
 WELL (FARM) No. 4 SERIAL No. L-4024
 ELEVATION (SPIRIT LEVEL) 1233'
 QUADRANGLE Cameron NE
 COUNTY Marshall DISTRICT Webster
 ENGINEER A. Streat
 ENGINEER'S REGISTRATION No. _____
 FILE No. _____ DRAWING No. Y-13-164
 DATE Feb. 4 1949 SCALE 1" = 800'

STATE OF WEST VIRGINIA
 DEPARTMENT OF MINES
 OIL AND GAS DIVISION
 CHARLESTON

WELL LOCATION MAP

FILE No. MARS-204-P

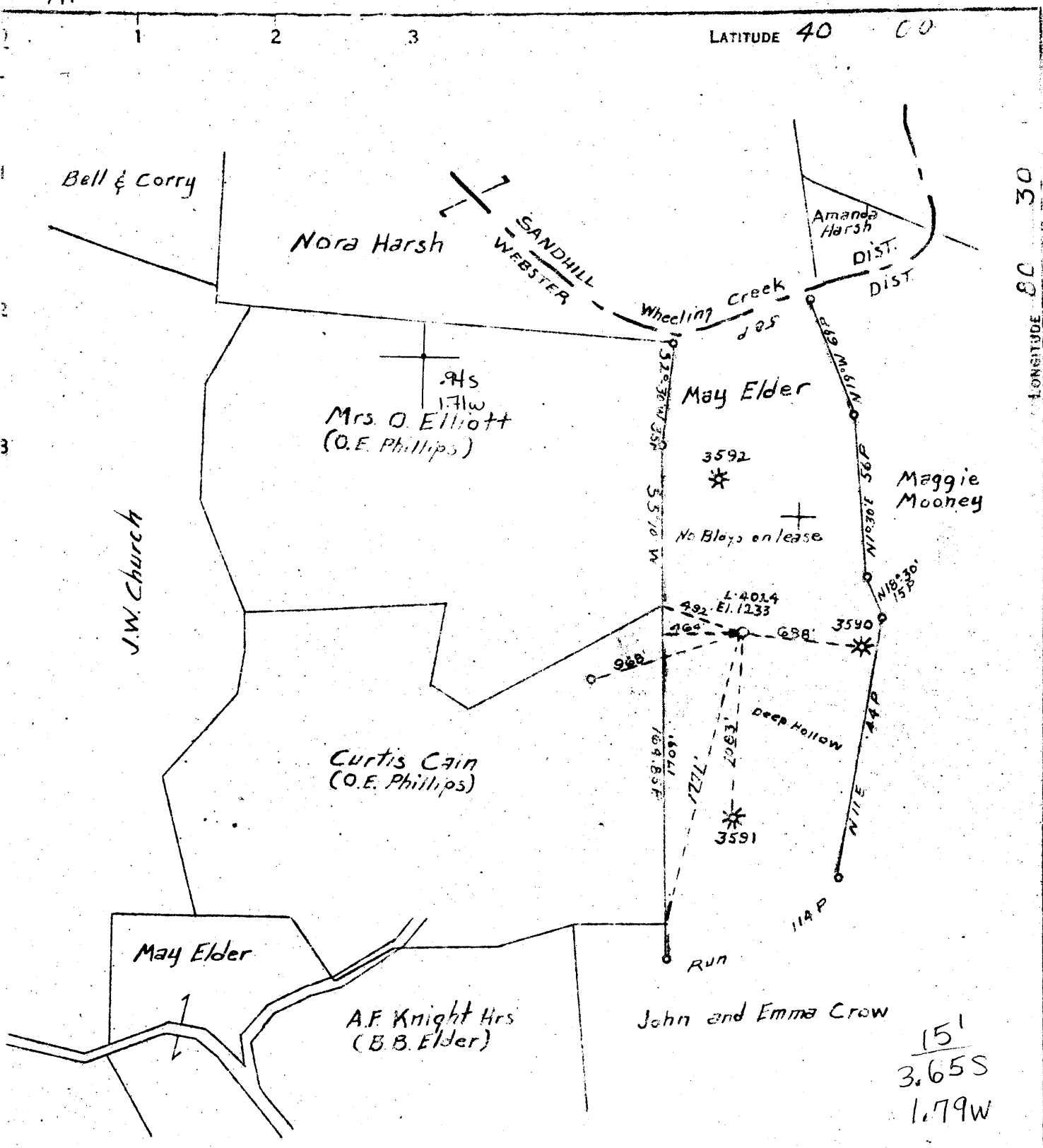
+ DENOTES LOCATION OF WELL ON UNITED STATES TOPOGRAPHIC MAPS. SCALE 1 TO 62,500. LATITUDE AND LONGITUDE LINES BEING REPRESENTED BY BORDER LINES AS SHOWN.

• DENOTES ONE INCH SPACES ON BORDER LINE OF ORIGINAL TRACING.

39°57'30"

LATITUDE 40 00

LONGITUDE 80 30



LAND OWNED BY **Everett E Moore**
Moundsville W. Va

- WELL LOCATION
- HILL DEEPER
- ABANDONMENT

COMPANY *The Manufacturers Light & Heat Co*
 ADDRESS *800 Union Trust Bldg, Pittsburgh Pa.*
 OPERATOR *May Elder*
 TRACT ACRES *10.4* LEASE NO. *19405*
 ELEC (FARM) NO. *4* SERIAL NO. *L-4024*
 ELEVATION (SPIRIT LEVEL) *1233'*
 TOWNSHIP *Cameron*
 COUNTY *Marshall* DISTRICT *Webster*
 ENGINEER *A. Streator*
 ENGINEER'S REGISTRATION NO. _____
 FILE NO. _____ DRAWING NO. *Y-13-164*
 DATE *Feb. 4 1949* SCALE *1" = 800'*

STATE OF WEST VIRGINIA
 DEPARTMENT OF MINES
 OIL AND GAS DIVISION
 CHARLESTON

WELL LOCATION MAP

FILE NO. **MARS-204**

— DENOTES LOCATION OF WELL ON UNITED STATES TOPOGRAPHIC MAPS. SCALE 1 TO 62,500. LATITUDE AND LONGITUDE LINES BEING REPRESENTED BY BORDER LINES AS SHOWN

— DENOTES ONE INCH SPACES ON BORDER LINE OF ORIGINAL TRACING

WEST VIRGINIA DEPARTMENT OF MINES
OIL & GAS DIVISION
W E L L R E C O R D

Permit No. Mars 204

Gas Well
CASING & TUBING

Cameron Quad.

Company

The Manf. Light & Heat Co.

Address

10 715 715

Farm

J.I. Scott 104 acres

8½ 1273 1273

Well No.

4024 Elev. 1233

6 5/8 1803 1803

District

Webster Marshall County

4 1954

Commenced

April 1, 1949

Completed

June 28, 1949

Volume

48/10 W 1/4", 3,395 C.F. Big Injun 6-28-49

Rock Pressure

400# 48 hrs.

Anchor Packer

Water

5 blrs. -70'; 1897-1900

Size 6½ x 4

Depth 1799'

Clay	0	12	4" tubing record	Thds. off					
Slate & Lime	12	70	Perf.	10'10"					
Sand	70	90	Tubing 1 jt.	32	4				
✓ Coal	263	265	Perf.	31	11				
Slate & Shell	265	285	Tubing 2 jts.	65	1				
✓ Waynesburg Coal	385	389	6 5/8" x 4 Packer						
Lime	434	467	Tubing 57 jts.	1799	4				
Slate	467	538		1939'	6"				
Lime	538	580	Add for thds	15	0				
✓ Mapletown Coal	580	583	Total	1954	6				
Lime & Shells	583	640							
Lime	640	682	PRESSURE IN MINUTES						
✓ Pittsburgh Coal	682	688	1	5	10	30	60	24hr	48 hr
Slate & Lime	688	720	3	5½	5½	9	16	265	400
Lime	720	775							
Red Rock	775	780							
Lime	780	785							
Red Rock	785	790							
Gray Rock	790	810							
Red Rock	810	832							
Lime & Slate	832	857							
Red Rock	857	880							
Slate & Shells	880	945							
Red Rock	945	960							
Slate & Shells	960	990							
Gray Rock	990	1006							
Hard Sand	1006	1029							
✓ Coal	1029	1031							
Lime & Slate	1031	1047							
Lime	1047	1072							
Red Rock	1072	1032							
Slate & Lime	1082	1129							
✓ Sand & D.	1129	1180							
Sand	1180	1195							
Gritty Lime	1195	1245							
Lime	1245	1290							
Slate Lime	1290	1360							
✓ Sand- Gas Sand	1360	1414							
✓ Freeport Coal	1414	1417							
Slate Lime	1417	1460							
Sand Broken	1460	1525							
Lime Hard	1525	1540							
Slate & Shells	1540	1564							
✓ Salt Sand	1564	1586							
Slate	1586	1594							
Sand	1594	1610							
Slate & Lime	1610	1675							
✓ Sand	1675	1742							
Slate & Lime	1742	1774							
✓ Big Injun	1774	1844							
Slate	1844	1880							
Sand	1880								
Total depth		1940							
SLM 688'; 1250'; 1789'; 1908'									
Show of gas 1880'									

1742
1233

519

(275)