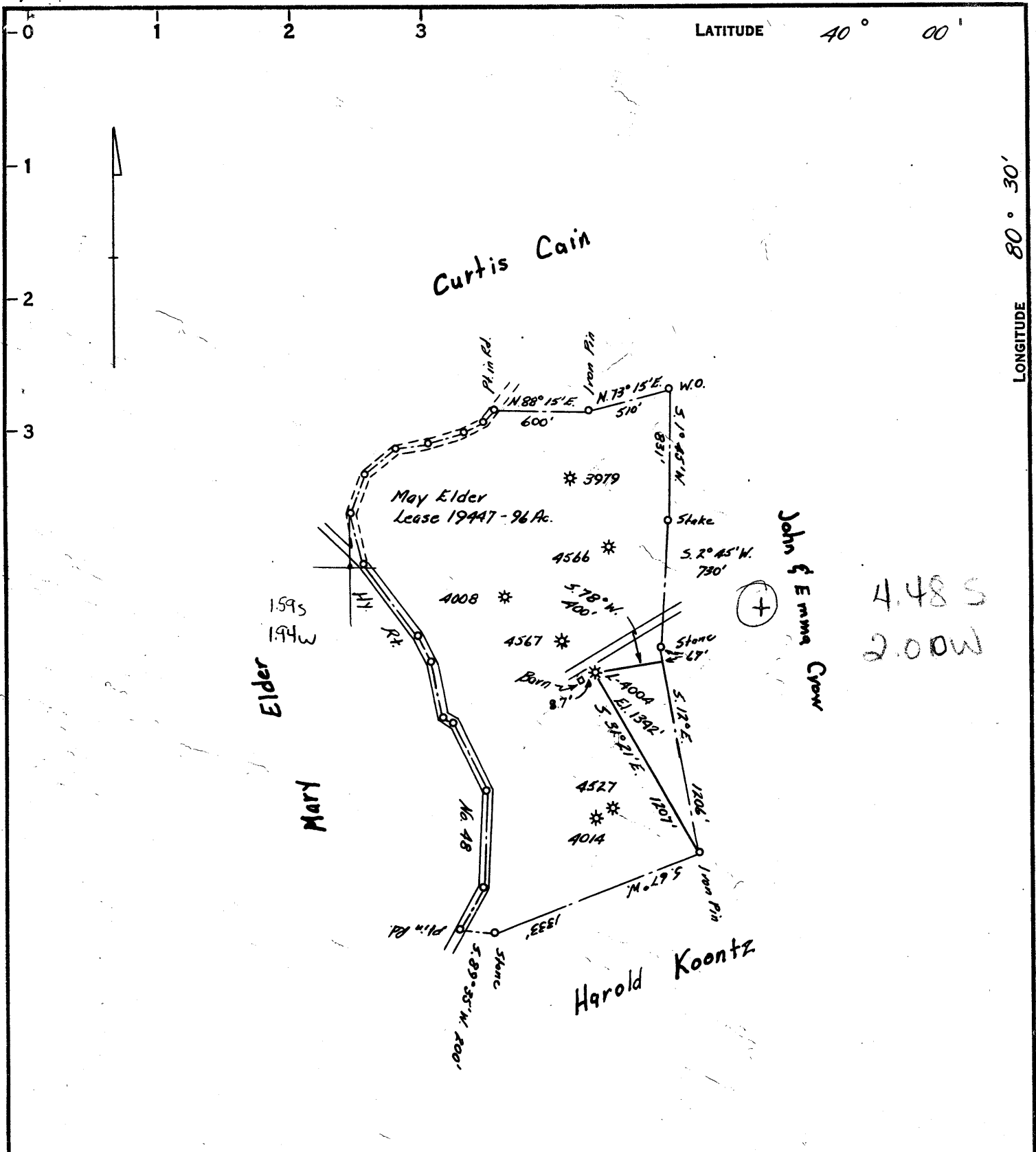


39°57'30"

LATITUDE 40° 00'

LONGITUDE 80° 30'



Reconditioned & Drilled Deeper

COAL OWNED BY Manongalia Imp. Company

Force of Accuracy 1/200

NEW LOCATION... I, the undersigned, hereby certify that this map is correct to the best of my knowledge and belief, and shows all the information required by paragraph 6 of the rules and regulations of the oil and gas section of the mining laws of West Virginia.

DRILL DEEPER...

ABANDONMENT...

Robert M. Acell 361 E (EG)

COMPANY The Manufacturers Light And Heat Co.
 ADDRESS 800 Union Trust Bldg. Pittsburgh, Pa.
 FARM May Elder
 MAP 0-25/10 ACRES 96 LEASE NO. 19447
 WELL (FARM) NO. 2 SERIAL NO. L-4004
 ELEVATION (SPIRIT LEVEL) 1342'
 QUADRANGLE Cameron N.V. & Pa. 15' NW NE
 COUNTY Marshall DISTRICT Webster
 POINT OF PROVEN ELEVATION Road Intersection at the Village of Calis
 FILE NO. _____ DRAWING NO. Y-25-738
 DATE April 24, 1963 SCALE 1" = 800'

STATE OF WEST VIRGINIA
 DEPARTMENT OF MINES
 OIL AND GAS DIVISION
 CHARLESTON

WELL LOCATION MAP

FILE NO. MARS-192-D

+ DENOTES LOCATION OF WELL ON UNITED STATES TOPOGRAPHIC MAPS. SCALE 1 TO 62,500. LATITUDE AND LONGITUDE LINES BEING REPRESENTED BY BORDER LINES AS SHOWN.

- DENOTES ONE INCH SPACES ON BORDER LINE OF ORIGINAL TRACING.



STATE OF WEST VIRGINIA
DEPARTMENT OF MINES
OIL AND GAS DIVISION

Quadrangle Cameron

Permit No. MARS-192-D

WELL RECORD

Storage
Oil or Gas Well GAS
(1952)

Company The Mfrs. Lt. and Ht. Co.
Address 800 Union Trust Bldg., Pittsburgh 19,
Farm May Elder Acres 96
Location (waters) _____
Well No. 4004 Elev. 1341.60G.L.10
District Webster County Marshall
The surface of tract is owned in fee by _____
Address _____
Mineral rights are owned by _____
Address _____
Drilling commenced May 23, 1963
Drilling completed September 2, 1963
Date Shot 8/30/63 From Big Injun
With Side Static
Open Flow /10ths Water in Inch
13 psig. 4 Inch
Volume 16,895,000 Cu. Ft.
Rock Pressure 890 lbs. 72 hrs.
Oil _____ bbls., 1st 24 hrs.
Fresh water _____ feet
Salt water _____ feet

Casing and Pa. Tubing	Used in Drilling	Left in Well	Packers
Size			Kind of Packer
18			
10 3/4"		843'	Size of
8 5/8"		1410'	
7"	1908'	1908'	Depth set
5 3/16			
4 1/2"	1900'	1978'	Perf. top
2			Perf. bottom
Liners Used			Perf. top
			Perf. bottom

CASING CEMENTED _____ SIZE _____ No. Ft. _____ Date _____
COAL WAS ENCOUNTERED AT 797 FEET _____ INCHES
_____ FEET _____ INCHES FEET _____ INCHES
_____ FEET _____ INCHES FEET _____ INCHES

Formation	Color	THICKNESS	Top	Bottom	Oil, Gas or Water	Depth Found	Remarks
Pittsburgh Coal		6	797	803			
Little Dunkard		10	1160	1170			
Big Dunkard		22	1280	1302			
Gas Sand		107	1398	1505			
1st Salt Sand		70	1540	1610			
3rd Salt Sand		73	1725	1798			
Big Injun							
Reconditioned to Original total depth of 1978'							
TOTAL DEPTH				1978			

Show of Gas 1552 - 1555 (Orig. Record)
Water 1775-1785' (Orig. Record)
Gas - 1954 to 1968' (Orig. Record)



WEST VIRGINIA DEPARTMENT OF MINES
OIL & GAS DIVISION
W E L L R E C O R D

Permit No. Mars 192

Cameron Quad.

Company

Address

Farm

Well No.

District

Commenced

Completed

Volume

Rock Pressure

Water

The Manf. Light & Heat Co.

Mary Elder Acres 300

4004 Elev. 1342

Webster Marshall County

Oct. 3, 1948

Nov. 22, 1948

80/10 M 4" , 6,286,080 B. Injun 11-22-48

368# 24 hr.

1775-1785

Gas Well
CASING & TUBING

Cond. 16 16

10 843 843

8 1/2 1410 1410

6 5/8 1908 1908

4 1989

Anchor Packer

Size 6 5/8 x 4

Depth 1927'

Clay	0	16	Slate	1302	1335
Slate	16	35	Lime	1335	1353
Lime	35	50	Slate	1353	1365
Slate	50	120	Lime	1365	1375
Red Rock	120	135	Slate	1375	1398
Slate	135	175	Sand <i>Gas sand</i>	1398	1505
Lime	175	190	Slate	1505	1540
Slate	190	240	Sand <i>Gas sand</i>	1540	1610 <i>gas</i>
Sand	240	255	Slate	1610	1632
Slate	255	280	Lime	1632	1650
Lime	280	290	Slate	1650	1725
Slate	290	320	Sand <i>Gas sand</i>	1725	1798
Lime	320	330	Black Slate	1798	1805
Slate	330	370	Lime	1805	1857
Lime	370	380	Slate	1857	1870
Slate	380	400	Lime	1870	1885
Lime	400	440	Slate	1885	1891
Slate	440	445	Big Injun Sand	1891	
✓ Showing of coal	445	448	Pay Sand	1954	1968 <i>gas</i>
Lime	448	458	Total Depth		1978
Slate	458	480	SLM 803		
Lime	480	500	Show of gas 1552-1555		
Sand	500	520	SLM 1898		
Slate	520	530	Gas 1954 to 1968 80/10 M in 4" , 6,286,080CF		
Lime	530	688	MINUTE PICKUP TEST IN 4" TUBING		
Slate	688	692	1 2 3 4 5 6 7 8 9		
✓ Mapletown Coal	692	694	220 275 290 295 302 305 307 310 311		
Slate	694	698			
Lime	698	780	10 15 30 45 60 24 hr.		
Slate & Shells	780	797	312 320 330 335 340 368		
✓ Pitts. Coal	797	803	Tubing record -----Thrd. on		
Lime	803	810	Perf. 25' 2"		
Slate	810	822	" 25' 2"		
Lime	822	840	Packer 3' 8"		
Slate	840	860	Tubing 80 jts.		
Red Rock	860	870	1939' 7"		
Slate & Shells	870	890	Total 1989' 11"		
Red Rock	890	898			
Lime	898	915			
Red Rock	915	950			
Lime	950	965			
Red Rock	965	980			
Slate	980	992			
Lime	992	1015			
White Slate	1015	1050			
Red Rock	1050	1072			
Slate	1072	1095			
Lime	1095	1104			
Slate	1104	1123			
Lime	1123	1137			
Slate	1137	1160			
✓ Little Dunkard Sand	1160	1170			
Slate	1170	1197			
Lime	1197	1210			
Slate	1210	1280			
✓ Big Dunkard	1280	1302			

1805
1342
463