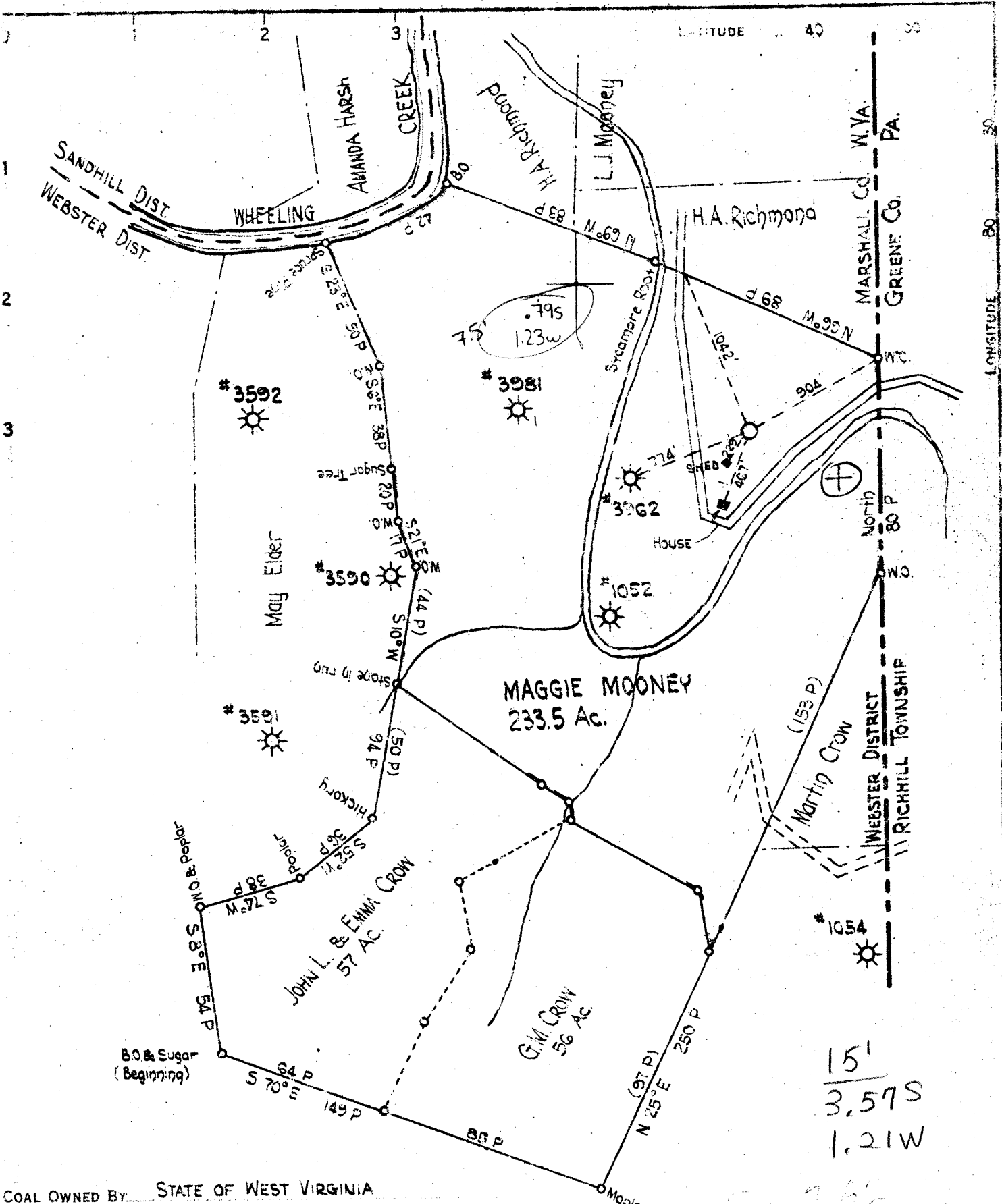


39°57'30"



15'  
 3,575  
 1,21W

COAL OWNED BY STATE OF WEST VIRGINIA

NEW LOCATION   
 DRILL DEEPER   
 ABANDONMENT

COMPANY THE MANUFACTURERS LIGHT AND HEAT COMPANY  
 ADDRESS 800 UNION TRUST BUILDING, PITTSBURGH, PA.  
 FARM MAGGIE MOONEY  
 TRACT ACRES 233.5 LEASE NO 2901  
 WELL (FARM) NO. 5 SERIAL NO. 3991  
 ELEVATION (SPIRIT LEVEL) 940'  
 QUADRANGLE CAMERON  
 COUNTY MARSHALL DISTRICT WEBSTER  
 ENGINEER A.C. STREATOR  
 ENGINEER'S REGISTRATION NO.  
 FILE NO. DRAWING NO. Y-13-81  
 DATE AUGUST 6, 1948 SCALE 1"=800' M.M.S.

STATE OF WEST VIRGINIA  
 DEPARTMENT OF MINES  
 OIL AND GAS DIVISION  
 CHARLESTON  
 WELL LOCATION MAP  
 FILE NO. MARS-187

☉ DENOTES LOCATION OF WELL ON UNITED STATES TOPOGRAPHIC MAPS. SCALE 1 TO 62,500. LATITUDE AND LONGITUDE LINES BEING REPRESENTED BY BORDER LINES AS SHOWN.  
 --- DENOTES ONE INCH SPACES ON BORDER LINE OF ORIGINAL TRACING.

1-622

WEST VIRGINIA DEPARTMENT OF MINES  
OIL & GAS DIVISION  
W E L L R E C O R D

Permit No. Mars 187  
Cameron Quad.  
Company  
Address  
Farm  
Well No.  
District  
Commenced  
Completed  
Volume  
Rock Pressure

The Manf. Light and Heat Co.  
Maggie Mooney Acres 233  
3991 Elev.  
Webster Marshall County  
Nov. 3, 1948  
Dec. 13, 1948  
22/10 W 1", 36,762 Fifty-foot 12-13-48  
280# 48 hrs.

Gas Well  
CASING & TUBING

|       |               |      |
|-------|---------------|------|
| Cond. | 16            | 16   |
|       | 461           | 461  |
|       | 8½            | 1069 |
|       | 1069          | 1069 |
|       | 6 5/8         | 1547 |
|       | 1547          | 1547 |
|       | 4             | 2340 |
|       | Anchor Packer |      |
|       | 6 5/8 x 4     |      |
|       | Depth 1581'   |      |

|                  |      |      |                              |      |      |
|------------------|------|------|------------------------------|------|------|
| Clay             | 0    | 20   | ✓ Big Injun Sand             | 1607 | 1755 |
| Lime             | 20   | 54   | Slate & Shells               | 1755 | 2033 |
| Slate            | 54   | 60   | Lime                         | 2033 | 2045 |
| Lime             | 60   | 66   | Slate & Shells               | 2045 | 2090 |
| Slate            | 66   | 72   | Sand H                       | 2090 | 2110 |
| Lime             | 72   | 88   | Slate & Shells               | 2110 | 2202 |
| Slate            | 88   | 95   | Pink Slate                   | 2202 | 2225 |
| Lime             | 95   | 120  | Slate & Shells               | 2225 | 2293 |
| Slate            | 120  | 125  | ✓ Sand 50'                   | 2293 | 2308 |
| ✓ Coal           | 125  | 128  | Slate                        | 2308 | 2317 |
| Lime             | 128  | 180  | Total Depth                  |      | 2317 |
| Slate            | 180  | 185  |                              |      |      |
| Lime             | 185  | 225  | SLM at 433'                  |      |      |
| Slate            | 225  | 230  | Show of gas 1105-1122        |      |      |
| Lime             | 230  | 308  | SLM 1533'                    |      |      |
| Slate            | 308  | 326  | Gas 2296-2298                |      |      |
| Lime             | 326  | 410  | 22/10 W 1" 36,762 G.F.       |      |      |
| Slate            | 410  | 424  | SLM 2308'                    |      |      |
| ✓ Patts. Coal    | 424  | 430  |                              |      |      |
| Lime             | 430  | 485  | 1 2 3 4 5 6 7 8              |      |      |
| Slate            | 485  | 500  | 1 3 4 5 6 7 8 9              |      |      |
| Lime             | 500  | 510  |                              |      |      |
| Red Rock         | 510  | 523  | 9 10 15 30 45 60             |      |      |
| Slate & Shells   | 523  | 562  | 11 13 18 38 55 70            |      |      |
| Lime             | 562  | 570  |                              |      |      |
| Red Rock         | 570  | 580  | 24 hr 48 hr                  |      |      |
| Lime             | 580  | 590  | 273 280                      |      |      |
| Red Rock         | 590  | 610  |                              |      |      |
| Slate            | 610  | 635  | 4" tubing record (Thds. off) |      |      |
| Lime             | 635  | 647  | Perf. 17 0                   |      |      |
| Slate            | 647  | 687  | Tubing 27 jts. 647 8"        |      |      |
| Red Rock         | 687  | 705  | Perf. 23 1"                  |      |      |
| Black Slate      | 705  | 720  | Tubing 2 jts. 47 10"         |      |      |
| Gray Slate       | 720  | 728  | 735' 7"                      |      |      |
| Red Rock         | 728  | 739  | Packer 3' 8"                 |      |      |
| Slate            | 739  | 757  | tubing 66 jts. 1584' 6"      |      |      |
| Sand             | 757  | 775  | 2320' 1"                     |      |      |
| Slate & Shells   | 775  | 821  | Add. for thds 20' 0"         |      |      |
| Lime             | 821  | 838  | Total 2340' 1"               |      |      |
| Slate            | 838  | 880  |                              |      |      |
| Shells           | 880  | 901  |                              |      |      |
| Sand             | 901  | 932  |                              |      |      |
| Slate & Shells   | 932  | 960  |                              |      |      |
| Sand             | 960  | 1020 |                              |      |      |
| Slate & Shells   | 1020 | 1023 |                              |      |      |
| ✓ Freeport Coal  | 1023 | 1027 |                              |      |      |
| Slate & Shells   | 1027 | 1058 |                              |      |      |
| Sand             | 1058 | 1105 |                              |      |      |
| Slate            | 1105 | 1122 |                              |      |      |
| Sand             | 1122 | 1142 |                              |      |      |
| Slate & Shells   | 1142 | 1443 |                              |      |      |
| Slate            | 1443 | 1447 |                              |      |      |
| Sand             | 1447 | 1467 |                              |      |      |
| Slate & Shells   | 1467 | 1517 |                              |      |      |
| ✓ Big Injun Sand | 1517 | 1595 |                              |      |      |
| Slate            | 1595 | 1607 |                              |      |      |