

COAL OWNED BY Massie E. Wade

NEW LOCATION...   
 DRILL DEEPER...   
 ABANDONMENT...

COMPANY The Manufacturers Light & Heat  
 ADDRESS 300 Union Trust Bldg. Pittsburgh Pa.  
 FARM C.N. Hicks  
 TRACT \_\_\_\_\_ ACRES 137 LEASE NO. 2093  
 WELL (FARM) NO. 1 SERIAL NO. 1892  
 ELEVATION (SPIRIT LEVEL) 1406'  
 QUADRANGLE Cameron W. Va.  
 COUNTY Marshall DISTRICT Cameron  
 ENGINEER Thos E. Virgin  
 ENGINEER'S REGISTRATION NO. 1503  
 FILE NO. \_\_\_\_\_ DRAWING NO. Y-13-445  
 DATE Sept. 22, 1950 SCALE 1" = 800'

STATE OF WEST VIRGINIA  
 DEPARTMENT OF MINES  
 OIL AND GAS DIVISION  
 CHARLESTON

**WELL LOCATION MAP**

FILE NO. MARS-322-A

+ DENOTES LOCATION OF WELL ON UNITED STATES TOPOGRAPHIC MAPS. SCALE 1 TO 62,500. LATITUDE AND LONGITUDE LINES BEING REPRESENTED BY BORDER LINES AS SHOWN.

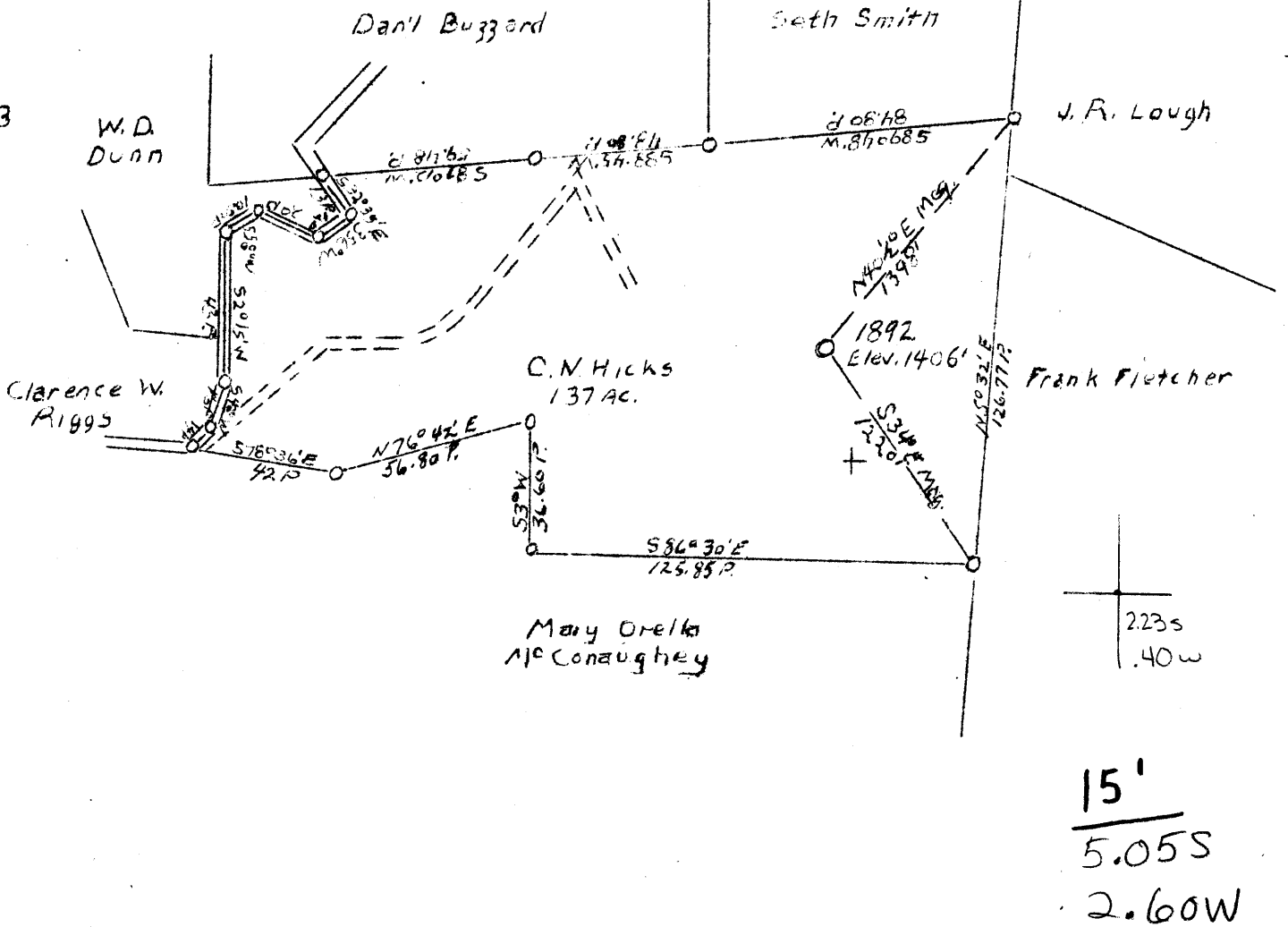
- DENOTES ONE INCH SPACES ON BORDER LINE OF ORIGINAL TRACING.

39°52'30"

LATITUDE 39 ° 53 '

80°37'30"

LONGITUDE 80 ° 30 '



COAL OWNED BY Isaac H Brownfield

DRILL DEEPER

30322

The Manufacturers Light  
 Company and Heat Company  
 Address 800 Union Tr. Bldg., Pitts., Pa.  
 Farm C. N. Hicks  
 Tract Acres 137 Lease No. 2093  
 well (Farm) No. 1 Serial No. 1892  
 Elevation (Spirit Level) 1406'  
 Quadrangle Cameron, W. Va.  
 County Marshall District Cameron.  
 Engineer Thomas Virgin  
 Engineer's Registration No.  
 File No. Drawing No. Y-11-500  
 Date Dec. 4, 1947 Scale 1" = 800'

STATE OF WEST VIRGINIA  
 Department of Mines  
 Oil and Gas Division  
 Charleston

WELL LOCATION MAP  
 File No. Mars - 177-D

\*+ Denotes location of well on U.S. Topographic Maps, scale 1 to 62,500, latitude & Longitude lines being represented by border lines as shown.  
 - Denotes one inch spaces on border line of original tracing.



367

STATE OF WEST VIRGINIA  
DEPARTMENT OF MINES  
OIL AND GAS DIVISION

WELL RECORD

Permit No. 1-1892

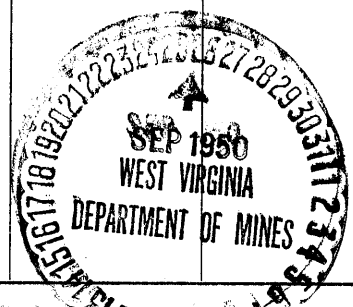
Oil or Gas Well (KIND)

Company The Manufacturers Light & Heat Company  
 Address 800 Union Trust Bldg., Pittsburgh, Pa.  
 Farm CLARA HICKS Acres 137  
 Location (waters) \_\_\_\_\_  
 Well No. 1-1892 Elev. 1406  
 District Cameron County Marshall  
 The surface of tract is owned in fee by Marsie E. Wade  
Cameron, W. Va. Address \_\_\_\_\_  
 Mineral rights are owned by The Mfrs. Light & Heat Co.  
800 Union Trust Bldg. Address Pittsburgh, Pa.  
 Drilling commenced January 8, 1916  
 Drilling completed March 4, 1916  
 Date Shot \_\_\_\_\_ From \_\_\_\_\_ To \_\_\_\_\_  
 With \_\_\_\_\_  
 Open Flow \_\_\_\_\_ /10ths Water in \_\_\_\_\_ Inch  
 \_\_\_\_\_ /10ths Merc. in \_\_\_\_\_ Inch  
 Volume \_\_\_\_\_ Cu. Ft.  
 Rock Pressure \_\_\_\_\_ lbs. \_\_\_\_\_ hrs.  
 Oil \_\_\_\_\_ bbls., 1st 24 hrs.  
 Fresh water \_\_\_\_\_ feet \_\_\_\_\_ feet  
 Salt water \_\_\_\_\_ feet \_\_\_\_\_ feet

Casing and Tubing	Used in Drilling	Left in Well	Packers
Size			
16			Kind of Packer
18			
10	285	285	Size of
8 1/4	1302	1302	
6 1/2	2085	2085	Depth set
5 3/16			
3			Perf. top
2			Perf. bottom
Liners Used			Perf. top
			Perf. bottom

CASING CEMENTED \_\_\_\_\_ SIZE \_\_\_\_\_ No. Ft. \_\_\_\_\_ Date \_\_\_\_\_  
 COAL WAS ENCOUNTERED AT 565 FEET 60 INCHES  
810 FEET 8 1/4 INCHES 902 FEET 8 1/4 INCHES  
 \_\_\_\_\_ FEET \_\_\_\_\_ INCHES \_\_\_\_\_ FEET \_\_\_\_\_ INCHES

Formation	Color	Hard or Soft	Top	Bottom	Oil, Gas or Water	Depth Found	Remarks
Coal			565	570	March 5, 1916 well connected up in 6-5/8 casing made in 6-5/8 casing 45 - 80 - 110 - 140 - 170  Well turned in line and utilized March 5, 1916.  2,800,000 cubic feet		
Bluff Sand			573	603			
Mapletown Coal			810	817			
Pittsburgh Coal			902	909			
Murphy Sand			990	1050			
Little Dunkard			1305	1385			
Big Dunkard			1400	1440			
Gas Sand			1587	1637			
S. Sand			1789	1814			
Maxon Sand			1880	1940			
Big Lime			1960	2040			
Pencil Cave			2040	2045			
Big Injun			2045	2280			
Berg Grit			2428	2453			
Sand			2603	2635			
Thirty Foot			2648	2688			
Fifty Foot			2855				
Gas at			2856				
Total Depth			2866				
Drilled Deeper							
Commenced Drilling			2866				
50' Sand			2866	2887			
Slate			2887	2895			
Lime			2895	2912			
Gordon Sand			2912	2950	Gas 2914 to 2917.36/10 water, 1" opening		
Lime			2950	2967			
Slate			2967	2982			
4th. Sand			2982	2990	Gas 2982 to 2990. 1 1/4"/10 water 1" opening		
Slate			2990	2995			
Lime			2995	3020			
5th. Sand			3020	3027			
Slate			3027	3040			
Total Depth			3040				



Formation	Color	Hard or Soft	Top	Bottom	Oil, Gas or Water	Depth Found	Remarks
<p>December 18, 1947 well was tubed with 4" Tubing.            One 6-5/8 x 4 M.&amp;F. Anchor Packer set at 287 1/4'.            Anchor ----- 165'10". 8 Jts. 8 thd. Tubing.            Above Packer -- 2888'9". 139 " " " "            First joint of Tubing perforated.            Spring Gauge Test.            1-2-3-4-5-6-7-8-9-10-11-12-13-14-15-16-17-18-19-20 Minutes            1-2-3-4-5-6-7-7 1/2-8-8 1/2-9-9 1/2-10-10 1/2-11-11 1/2-12-12 1/2-13-13 1/2 lbs.            Open flow Test, 4 1/4"/10 water in 1" opening. - 52,008            48 hr. Rock, Tubing 50# - Casinghead, 66#.</p>							

Date September 25, 1947

APPROVED THE MANUFACTURERS LIGHT & HEAT CO., Owner

By Bur Sloope LAND AGENT.