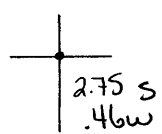


39°47'30"

Latitude

80°35'00"

Longitude



**Topo Location**

7.5' Loc. \_\_\_\_\_ 15' Loc. \_\_\_\_\_  
 \_\_\_\_\_ (calc.) \_\_\_\_\_

**Company** Guyd AG Patterson  
**Farm** WP Bonas Trst #1  
**15' Quad** \_\_\_\_\_  
 (sec.)  
**7.5' Quad** Cameron  
**District** Liberty

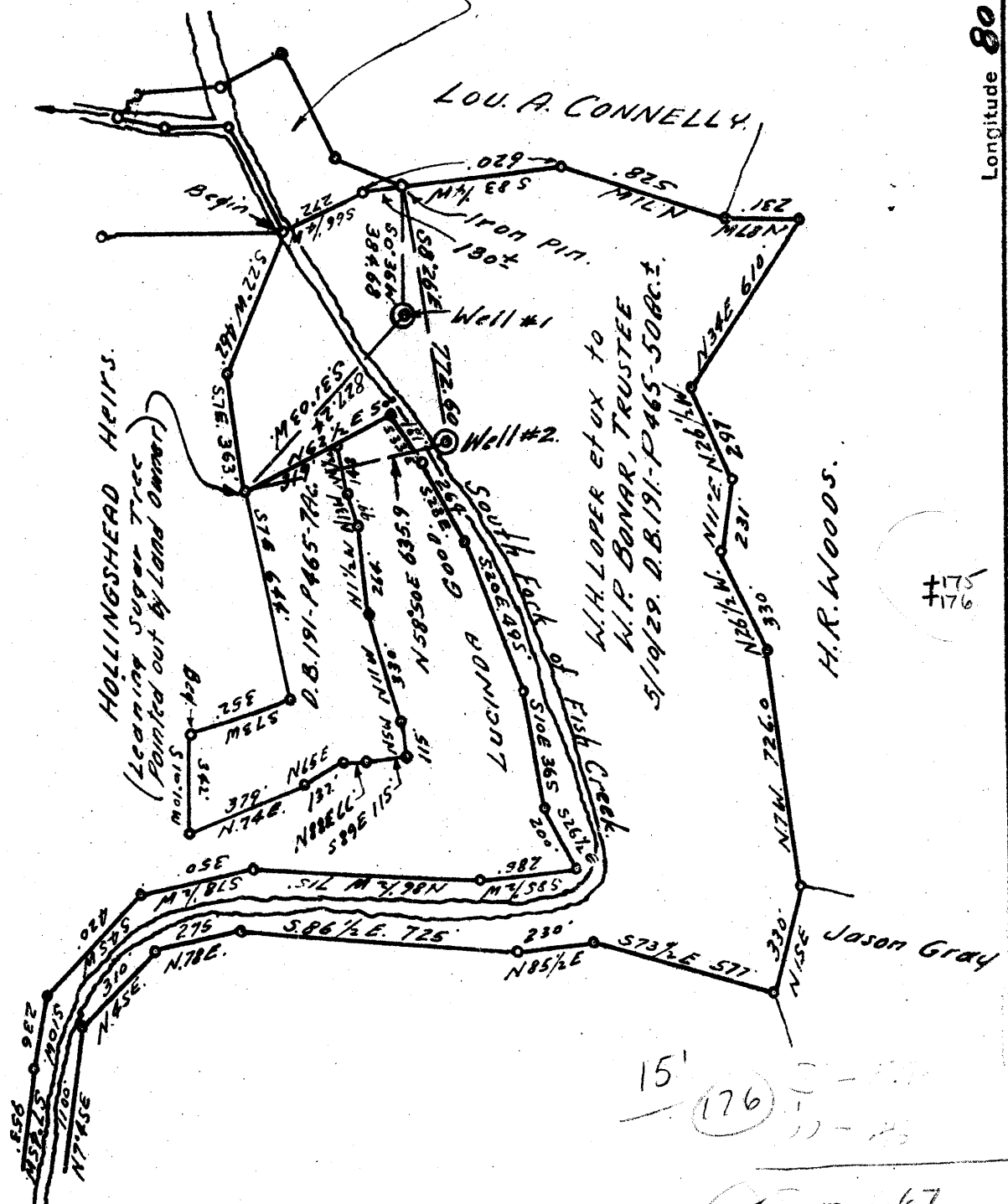
**WELL LOCATION PLAT**

**County** OSI **Permit** 175

Latitude 39° 50'

Longitude 80° 35'

LOU A. CONNELLY to W.P. Bonar, Trustee,  
Girl Scout Council of Moundsville.  
Sept 20, 1928 - D.B. 188-P41.  
7 1/2 Ac.



New Location    
 Drill Decr.    
 Abandonment

Company GUY B & A.G. PATTERSON.  
 Address CAMERON W. VA.  
 Farm W.P. BONAR, Trustee. G.S.C.M. (formerly HILL)  
 Tract 1 Acres 57, Lease No. \_\_\_\_\_  
 Well (arm) No. 1 & 2, Serial No. \_\_\_\_\_  
 Elevation (Spirit Level) Well No. 1-835; - No 2-832  
 Quadrangle CAMERON.  
 County MARSHALL District LIBERTY  
 Engineer WALTER W. STEGMAN.  
 Engineer's Registration No. 394  
 File No. G.S.7 - P105. Drawing No. \_\_\_\_\_  
 Date APR. 15, 1947. Scale 1 inch = 500 Feet.

STATE OF WEST VIRGINIA  
 DEPARTMENT OF MINES  
 OIL AND GAS DIVISION  
 CHARLESTON

WELL LOCATION MAP  
 FILE NO. MARS-175-#1-176#2

+ Denotes location of well on United States Topographic Maps, scale 1 to 62,500, latitude and longitude lines being represented by border lines as shown.

- Denotes one inch spaces on border line of original tracing.



STATE OF WEST VIRGINIA  
DEPARTMENT OF MINES  
OIL AND GAS DIVISION

Quadrangle Cameron

WELL RECORD

Permit No. MARS-175-R

Oil or Gas Well GAS Storage  
(KIND)

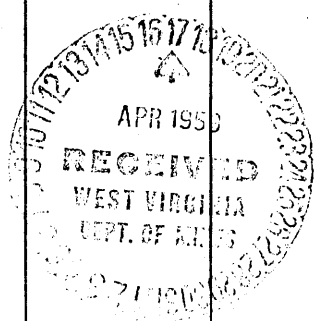
Company <u>The Manufacturers Light and Heat Company</u>	Casing and Tubing	Used in Drilling	Left in Well	Packers
Address <u>800 Union Trust Building, Pgh. 19, Penna.</u>				
Farm <u>Hopkins and Goodman</u> Acres <u>57</u>	Size			
Location (waters) _____	16			Kind of Packer _____
Well No. <u>4202</u> Elev. <u>836.48'</u>	13			
District <u>Liberty</u> County <u>Marshall</u>	10			Size of _____
The surface of tract is owned in fee by _____	8 1/4 "	257'	257'	
Address _____	<del>6 5/8</del> 7"	889'	889'	Depth set _____
Mineral rights are owned by _____	5 3/16 "	1568'	1568'	
Address _____	3			Perf. top _____
Drilling commenced <u>October 30, 1958</u>	2			Perf. bottom _____
Drilling completed <u>March 26, 1959</u>	Liners Used _____			Perf. top _____
Date Shot _____ From _____ To _____				Perf. bottom _____
With _____				

Open Flow \_\_\_\_\_ /10ths Water in \_\_\_\_\_ Inch  
 \_\_\_\_\_ /10ths Merc. in \_\_\_\_\_ Inch  
 Volume \_\_\_\_\_ Cu. Ft.  
 Rock Pressure 75 lbs. 72 hrs.  
 Oil \_\_\_\_\_ bbls., 1st 24 hrs.  
 Fresh water \_\_\_\_\_ feet  
 Salt water \_\_\_\_\_ feet

CASING CEMENTED \_\_\_\_\_ SIZE \_\_\_\_\_ No. Ft. \_\_\_\_\_ Date \_\_\_\_\_

COAL WAS ENCOUNTERED AT \_\_\_\_\_ FEET \_\_\_\_\_ INCHES  
 \_\_\_\_\_ FEET \_\_\_\_\_ INCHES FEET \_\_\_\_\_ INCHES  
 \_\_\_\_\_ FEET \_\_\_\_\_ INCHES FEET \_\_\_\_\_ INCHES

Formation	Color	Hard or Soft THICKNESS	Top	Bottom	Oil, Gas or Water	Depth Found	Remarks
Pittsburgh Coal		5	550	555	Not enough Gas to Test All Pipe Measured over Threads Run 257' of 8 5/8" Casing, Smls. Gr. J24# on a steel shoe. Cemented with 125 Bags of cement 14.7 lbs per gal. and 1 bag Aquagel. No Return of cement at the surface. Run 889' of 7" Casing, Smls. Gr. J20# on a steel shoe. Cemented with 200 bags cement, 14.8 lbs. per gal. and 10 bags Aquagel. No return of cement at the surface. Run 1568' of 5 1/2" casing, smls. Gr. J 17# on a steel Shoe set at 1555'. Cemented with 225 bags cement 14.7 lbs. per gal. and 13 bags Aquagel. Good return of cement at the surface. Plugged back from 1656' to 1590' with new cement.		
Maxton Sand		32	1538	1570			
Lime			1630				
Total Depth				1590			
5 1/2" Shoe Set at				1555			
				1630 836 794			



HOPKINS & GOODMAN NO. 4202 WELL.

Liberty District, Marshall County, W. Va.

By The Manufacturers Light & Heat Co., 800 Union Trust Bldg., Pittsburgh,  
19, Pa.

Redrilled under permit Mars-~~25~~<sup>175R</sup>-B; Hamerom Quadrangle.  
On 57 acres.

Elevation, 836.48' L.

Drilling commenced Oct. 30, 1958; completed March 26, 1958.

Rock pressure, 75 lbs. in 72 hrs.

8 1/4" casing, 257'; 7", 889'; 5 1/2", 1568'; all left in.

Not enough gas to test.

All pipe measured over threads.

Run 257' of 8 3/8" casing, Sals. Gr. J24# on a steel shoe. Cemented with 125  
bags of cement 14.7 lbs. per gal. and 1 bag Aquagel. No return of  
cement at the surface.

Run 889' of 7" casing, Sals. Gr. J20# on a steel shoe. Cemented with 200  
bags cement, 14.8 lbs. per gal. and 10 bags Aquagel. No return of  
cement at the surface.

Run 1568' of 5 1/2" casing, Sals. Gr. J 17# on a steel shoe, set at 1555'.  
Cemented with 225 bags cement, 14.7 lbs. per gal. and 13 bags Aquagel.  
Good return of cement at the surface.

Plugged back from 1656' to 1590' with new cement.

Storage well. Record to Dept. of Mines stamped April 17, 1959.

Record from Allen April 27, 1959.

	Top.	Bottom.
Pittsburgh Coal	550	- 555
Marten Sand (5 1/2" shoe at 1555')	1538	- 1570
Lime	1630	- ....
Total depth		1656
Plugged back to		1590

WEST VIRGINIA DEPARTMENT OF MINES  
OIL & GAS DIVISION  
W E L L R E C O R D

Permit No. Mars 175  
Cameron Quad.

Dry Hole  
CASING & TUBING

Company	Guy B. & A.G. Patterson			
Address	Cameron, W.Va.	10	17	17
Farm	Hill(Isaac) Acres 57	8 $\frac{1}{2}$	253	253
Location	S.F. Fish Creek	6 5/8	892	892
Well No.	1 Elev. 835'			
District	Liberty Marshall			
Surface	Dr. Bonar, Cameron, W.Va. Star Route			
Mineral	Clara Hopkins, Cameron, Sidney Goodman, 4724 Coleridge St. Pittsburgh, Pa.			
Commenced	July 3, 1947			
Completed	Aug. 11, 1947			
Oil	show			
Fresh Water	70'			
Salt Water	253'			

Slate	W	S	20	65	
Lime	Wh	H	65	115	
Slate	B	S	115	135	
Lime	W	H	165	195	
Slate	B	S	195	230	
Sand	Wh	H	230	250	
✓Waynesburg Coal	B	S	250	254	
Lime	W	S	254	300	
Slate	B	S	300	350	
Lime	W	H	350	450	
✓Mapletown Coal	B	S	450	455	Gas 40,000
Slate	B	S	455	500	
Lime	W	H	500	540	
Slate	B	S	540	550	
✓Pittsb. Coal	B	S	550	555	
Slate	W	S	555	565	
Lime	W	H	565	600	
Slate	B	S	600	625	
Pink Rock	P	S	625	655	
Slate	B	S	655	662	
Pink Rock		S	662	677	
✓Sand Murphy	W	H	677	745	
Pink Rock		S	745	756	
Red Rock		S	756	827	
✓Connelly Coal		S	827	831	Little Gas
Gritty Lime	W	H	831	850	
Pink Rock		S	850	892	
Lime	W	H	892	915	
Slate		S	915	951	
Pink Rock		S	951	979	
✓Little Dunkard		H	979	1014	
✓Coal	B	S	1014	1018	
Slate	B	S	1018	1050	
✓Big Dunkard		H	1050	1130	
✓Freeport Coal	B	S	1130	1138	
Gritty Lime	W	H	1138	1168	
Slate	B	S	1168	1180	
Lime	W	H	1180	1215	
✓Gas Sand	W	H	1215	1225	Little Gas
Lime	W	H	1225	1265	
Slate	B	S	1265	1310	
Sand	W	H	1310	1419	
Slate	B	S	1419	1445	
✓Sand Salt	B	S	1445	1495	
Lime Gritty	W	H	1495	1570	Little gas
✓Maxon	B	S	1570	1620	
Slate	B	S	1620	1630	
✓Maxon	W	H	1630	1662	Little oil 1651

555  
420  

---

135  
50  

---

85  
52  
30