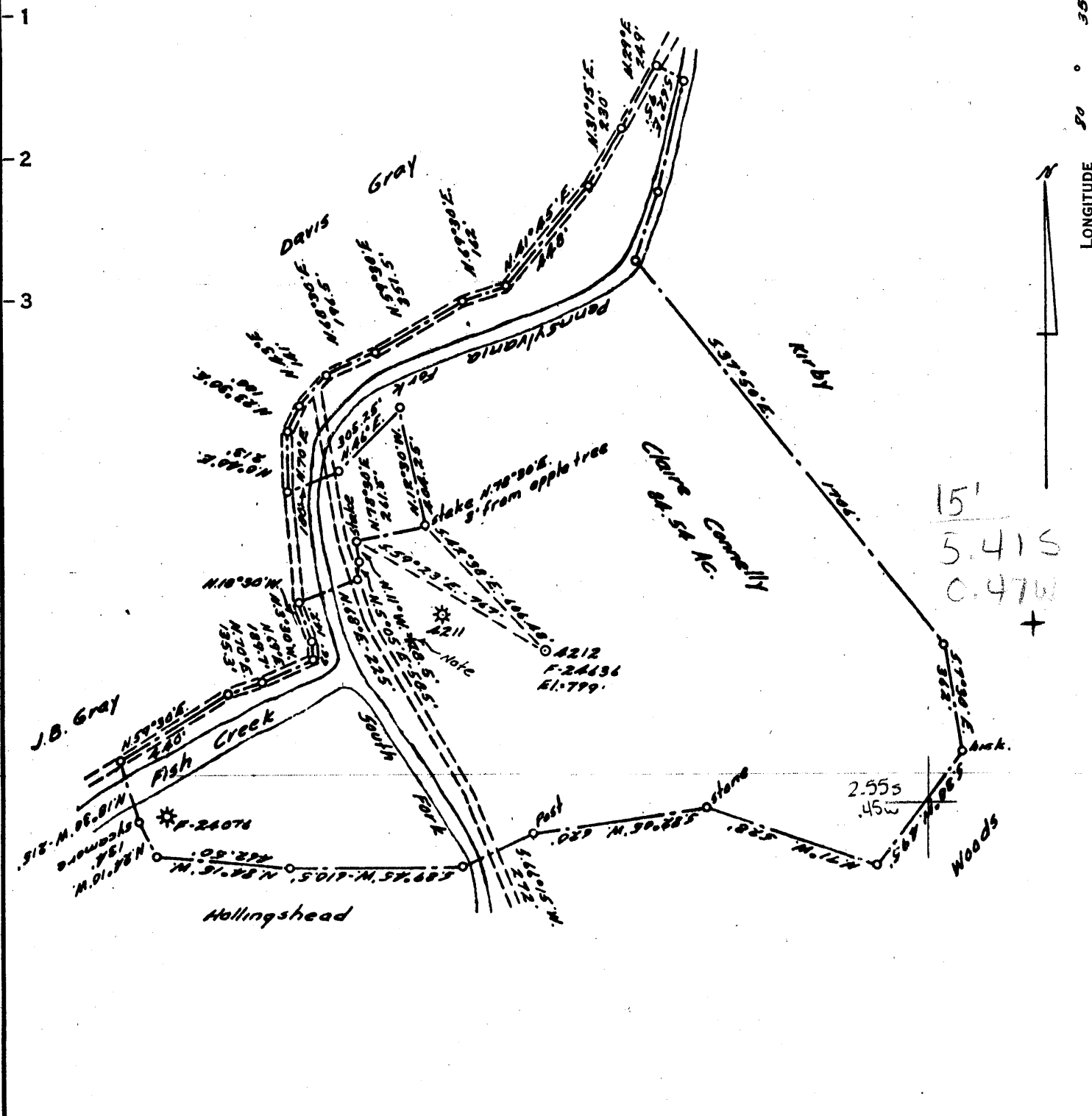


39°47'30"

LATITUDE 39 0 50

LONGITUDE 90 0 55'



COAL OWNED BY _____
 RECONITION

NEW LOCATION.....

DRILL DEEPER.....

ABANDONMENT.....

COMPANY The Manufacturers Light & Heat Co.

ADDRESS 800 Union Trust Bldg. Pgh. Pa.

FARM Claire Connelly

TRACT _____ ACRES 35 LEASE No. 26958

WELL (FARM) No. 2 SERIAL No. 4212

ELEVATION (SPIRIT LEVEL) 799'

QUADRANGLE Cameron SL

COUNTY Marshall DISTRICT Liberty

ENGINEER W.W. Stegman (G.P. Patterson Co)

ENGINEER'S REGISTRATION No. 394

FILE No. _____ DRAWING No. V-15-175

DATE 4 March 1955 SCALE 1" = 500'

STATE OF WEST VIRGINIA
 DEPARTMENT OF MINES
 OIL AND GAS DIVISION
 CHARLESTON

WELL LOCATION MAP

FILE No. TMars-174-Redrill
 (Storage)

+ DENOTES LOCATION OF WELL ON UNITED STATES TOPOGRAPHIC MAPS. SCALE 1 TO 62,500. LATITUDE AND LONGITUDE LINES BEING REPRESENTED BY BORDER LINES AS SHOWN.

- DENOTES ONE INCH SPACES ON BORDER LINE OF ORIGINAL TRACING.

9-0 25 26 21



STATE OF WEST VIRGINIA
DEPARTMENT OF MINES
OIL AND GAS DIVISION

Quadrangle Cameron

WELL RECORD

Storage

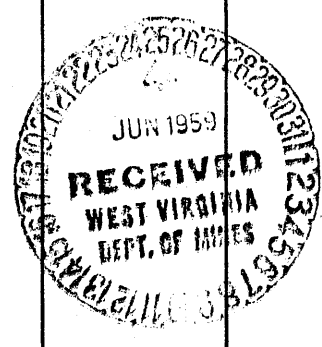
Permit No. MARS-174-REDRILL

Oil or Gas Well GAS
(KIND)

Company <u>The Manufacturers Light and Heat Company</u>	Casing and Tubing	Used in Drilling	Left in Well	Packers
Address <u>800 Union Trust Building, Pgh. 19, Penna.</u>	Size			
Farm <u>Claire Connelly</u> Acres <u>85</u>	16			Kind of Packer
Location (waters)	18			
Well No. <u>4212</u> Elev. <u>799'</u>	10"		23	Size of
District <u>Liberty</u> County <u>Marshall</u>	8 1/4"	0	233	Depth set
The surface of tract is owned in fee by	7"	906	906	
Address	5 3/16"	1596	1596	
Mineral rights are owned by	8			Perf. top
Address	2			Perf. bottom
Drilling commenced <u>April 9, 1959</u>	Liners Used			Perf. top
Drilling completed <u>May 25, 1959</u>				Perf. bottom
Date Shot From To				
With				
Open Flow /10ths Water in Inch	CASING CEMENTED	SIZE	No. Ft.	Date
/10ths Merc. in Inch				
Volume <u>198,312</u> Cu. Ft.	COAL WAS ENCOUNTERED AT	FEET	INCHES	
Rock Pressure <u>85</u> lbs. <u>24</u> hrs.	FEET	INCHES	FEET	INCHES
Oil bbls., 1st 24 hrs.	FEET	INCHES	FEET	INCHES
Fresh water feet				
Salt water feet				

Formation	Color	Hardness THICKNESS	Top	Bottom	Oil, Gas or Water	Depth Found	Remarks
Schlumberger Well Survey					All pipe measured over threads.		
Pittsburgh Coal		5	499	504	The 10" & 8" casing having been cemented		
Big Dunkard		29	1013	1042	when originally run was not disturbed.		
Maxton		14	1488	1502	Run 906' of 7" casing, SM.J.20# on a		
Lower Maxton		34	1578	1612	steel shoe. Cemented with 150 bags of		
Big Lime			1620	1620	cement, 14.6 lbs per gallon. Good return		
Total Depth				1620	of cement at the surface. Run 1596' of		
5 1/2" Shoe set at				1582	5 1/2" casing, SM.J.17# on a steel shoe		
					set at 1582'. Cemented with 150 bags of		
					cement, 14.5 lbs per gallon. Good return		
					of cement at the surface. Drilled		
					deeper from 1578' to 1648'. Filled back		
					to 1620' with 3 bags of cement by using		
					a cement bailer		

1620
799
821



WEST VIRGINIA DEPARTMENT OF MINES
OIL & GAS DIVISION
W E L L R E C O R D

Dry Hole
CASING & TUBING

Permit No. Mars 174
Cameron Quad.
Company
Address
Farm
Location
Well No.
District
Surface
Mineral
Commenced

Guy E. & A.G. Patterson
Cameron, W.Va.
Clare Connelly Acres 84.54
Fish Creek
3 Elev. 799.00
Liberty Marshall County
Chas. Woods, Cameron, W.Va.
Belton Fuel Co., Uniontown, Pa.
Oct. 15, 1948

10
8 1/4
6 5/8
9
124
232

Lime	0	45
Slate	45	83
Lime	83	161
Lime Water	161	182
Slate	182	232
✓Waynesburg Coal	232	234
Sand	234	240
Lime	240	283
Slate	283	320
Lime Shells	320	400
Slate	400	426
✓Mapletown Coal	426	429
Slate & Lime Shells	429	460
Slate	460	490
Black Shale	490	515
Soft Slate	515	526
✓Pittsburgh Coal	526	531
Lime Shells	531	545
Total		545

780

19

799

531

55

10

0

5000 ft. gas - no water

12000' gas- 2 bbls. water

531

531
420

111

60

50

19

41