

COAL OWNED BY RECONDITION PARTIAL 12.06

NEW LOCATION.....   
 DRILL DEEPER.....   
 ABANDONMENT.....  - 1-25-71

COMPANY The Manufacturers Light & Heat Co.  
 ADDRESS 800 Union Trust Bldg Pgh. Pa.  
 FARM Claire Connelly  
 TRACT \_\_\_\_\_ ACRES 85 LEASE No. 26958  
 WELL (FARM) No. 1 SERIAL No. 4211  
 ELEVATION (SPIRIT LEVEL) 805'  
 QUADRANGLE Cameron SC  
 COUNTY Marshall DISTRICT Liberty  
 ENGINEER W.W. Stegman (Guy B. Patterson)  
 ENGINEER'S REGISTRATION No. 39A  
 FILE No. \_\_\_\_\_ DRAWING No. Y-15-176  
 DATE 4 March 1955 SCALE 1"=500'

**STATE OF WEST VIRGINIA**  
 DEPARTMENT OF MINES  
 OIL AND GAS DIVISION  
 CHARLESTON

**WELL LOCATION MAP**

FILE No. Mars-171-Partial  
 (Storage)  
 - 172

+ DENOTES LOCATION OF WELL ON UNITED STATES TOPOGRAPHIC MAPS. SCALE 1 TO 62,500, LATITUDE AND LONGITUDE LINES BEING REPRESENTED BY BORDER LINES AS SHOWN.  
 - DENOTES ONE INCH SPACES ON BORDER LINE OF ORIGINAL TRACING.

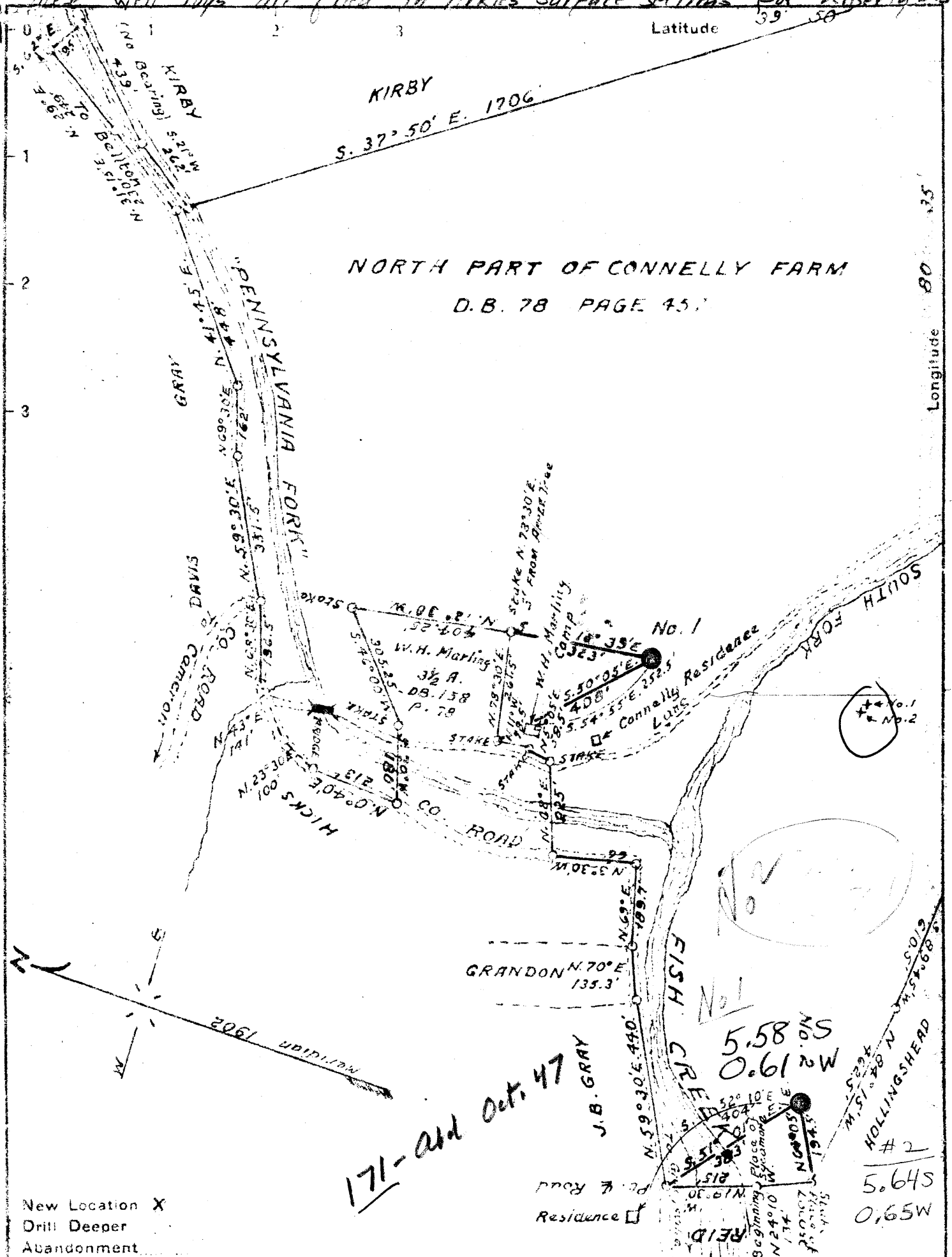
These well logs are filed in Hicks' surface sections for Liberty District

Latitude 39° 50'

Longitude 80° 35'

KIRBY  
S. 37° 50' E. 1706'

NORTH PART OF CONNELLY FARM  
D.B. 78 PAGE 45'



171-Add Oct. 47

New Location X  
Drill Deeper  
Abandonment

Company GUY B. & A. G. PATTERSON  
 Address CAMERON, W. VA. P.O. BOX 43  
 Farm CLAIRE CONNELLY  
 Tract 1 Acres 84.54 Lease No. \_\_\_\_\_  
 Well (Farm) No. 1 & 2 Serial No. \_\_\_\_\_  
 Elevation (Spirit Level) No. 1 - 799', No. 2 - 795'  
 Quadrangle CAMERON  
 County MARSHALL District LIBERTY  
 Engineer GORDON W. SAMMONS  
 Engineer's Registration No. 509  
 File No. \_\_\_\_\_ Drawing No. \_\_\_\_\_  
 Date SEPT. -5-1946 Scale 1 INCH = 300'

STATE OF WEST VIRGINIA  
DEPARTMENT OF MINES  
OIL AND GAS DIVISION  
CHARLESTON

WELL LOCATION MAP  
FILE NO. MARS-171-#1  
MARS-172-#2  
+ Denotes location of well on United States Topographic Maps, scale 1 to 62,500, latitude and longitude lines being represented by border lines as shown.  
- Denotes one inch spaces on border line of original tracing.

WEST VIRGINIA DEPARTMENT OF MINES  
OIL & GAS DIVISION  
W E L L R E C O R D

Gas Well  
CASING & TUBING

Permit No. Mars 172  
Cameron Quad.

Company Guy B. & A. G. Patterson  
Address Cameron, W.Va.  
Farm Clare Connelly Acres 89  
Location Fish Creek  
Well No. 2 Elev. --1341'  
District Liberty Marshall County  
Surface Chas. Woods, Star Route,  
Cameron, W.Va.  
Mineral Same  
Commenced May 5, 1947  
Completed June 1, 1947  
Open flow 40/10 M in 2"  
Volume 408,000 C.F.  
Rock Pressure 48 lbs, 5 hrs.  
Fresh Water 70'; 220'

10	23	23
8 1/2	233	233
6 5/8	909	909
5 3/16	1556	1556

HookWall Packer  
Size 5 3/16 x 6 3/16  
Depth 1556

Casing cemented:  
8 1/2 233'

Coal at 210' 24";  
~~200-403'~~, 498-503;  
780-782'

*395-399*  
*1085-87'*  
*1105-08'*

OCT 13 1947

Gravel		23	23	
Lime Wh	S	23	215	
✓ Coal B	S	<i>Waynesburg</i> 215	207	
Lime W	H	225	235	Water
Slate B	S	235	250	
Slate B	S	250	300	
Rock R	S	300	350	
Lime W	H	350	395	
✓ Coal B	S	<i>Seewickley</i> 395	399	
Lime W	H	399	405	
Lime W	H	405	498	
✓ Coal B	S	<i>Pittsburgh</i> 498	503	Water
Rock R	S	503	565	
Sand W	H	565	595	
Lime W	H	595	675	
Slate B	S	675	740	
Lime W	H	740	780	
✓ Coal B	S	780	782	Gas
Rock R	S	782	800	
Rock G	H	800	825	
Lime W	H	825	875	
Rock P	S	875	900	
Sand B	H	900	940	
✓ Coal B	S	940	945	
Slate W	S	945	975	
✓ B. Dunkard	H	975	1045	Water-gas
Slate W	S	1045	1085	
✓ Coal B	S	1085	1087	
Slate B	S	1087	1095	
Lime W	H	1095	1105	
✓ Coal B	S	1105	1108	
Slate B	S	1108	1160	
Lime W	H	1150	1275	
Slate B	S	1275	1358	
Sand B	H	1358	1480	
Lime W	H	1480	1520	
Sand B	H	1520	1537	
Slate B	S	1537	1546	
Sand W <i>Sett</i>	H	1546	1578	1566 to 1572 Gas



WEST VIRGINIA DEPARTMENT OF MINES  
OIL & GAS DIVISION  
W E L L R E C O R D

Permit No. Mars 171

Oil & Gas Well  
CASING & TUBING

Cameron Quad.

Company

Guy B. & A. G. Patterson

Address

Cameron, W. Va.

Farm

Clare Connelly Acres 84

Location

Fish Creek

Well No.

1 Elev. 799'

District

Liberty Marshall County

Surface

Clare Connelly, Cameron, W. Va.

Mineral

Belton Fuel Co. Uniontown, Pa.

Commenced

Sept. 13, 1946

Completed

Nov. 13, 1946

Date shot

Nov. 14, 1946 Depth 2555 to 2561

Open flow

with 20 qts. gly.

Volume

26/10ths W in 1 1/4"

Rock Pressure

70,700 C.F.

Oil

200 lbs.

Fresh Water

Show

Salt Water

1 blr.

None

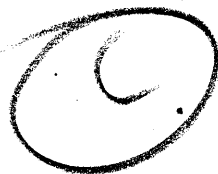
10	152	152
8 1/2	1000	1000
6 5/8	1617	1617
2	2623	2623

Hook Wall Packer  
Size  
Depth 116' from bottom

Perf. bot 2553  
" top 4th Sand

AUG 11 1947

Conductor Brown	S		16	
✓ Coal Bk	S		65	Washington
Lime Wh	H		140	
✓ Coal Bk	S		142	Waynesburg
Lime Wh	H		152	
✓ <del>Murphy Sand Wh</del>	S		188	
✓ Waynesburg Coal Bk	S		200	
Lime Water Wh	S		204	
Slate Bk	S		220	
Slate Bk	S		250	
Rock Pink	S		305	
Lime Wh	S		330	
Coal Bk	S	400	404	Sewickley Coal
Lime Wh	H	410	498	
✓ Coal Bk	S	498	504	Pittsburgh Coal
Lime Wh	S	504	555	
Red Rock	S	555	600	
Rock Wh	H	600	712	
✓ Rock Wh	H	712	784	Little gas
Red Rock	S	784	825	
Sand Wh	H	825	970	
✓ Sand Wh	H	970	1000	B. Dunkard
Lime Wh	H	1000	1090	
Lime Wh	H	1090	1140	
Slate Bk	S	1140	1268	
Slate Bk	S	1268	1375	
✓ Sand Bk	S	1375	1470	Salt Sand
Slate Bk	S	1470	1535	
Sand Bk	S	1535	1583	Broken Up Sand
✓ Lime Wh	H	1583	1664	Big Lime
✓ Sand Y	H	1664	1934	Big Injun
Lime Wh	H	1934	2000	
Slate Bk	S	2000	2070	
Lime Wh	H	2070	2125	
Lime Wh	S	2125	2280	
✓ Sand Wh	H	2280	2293	Thirty Foot
Slate Bk	S	2293	2483	
✓ Sand Wh	H	2483	2495	Fifty Foot
Slate Bk	S	2495	2548	
✓ Sand Wh	H	2548	2553	Gordon Stray show of oil
✓ Sand Wh	H	2553	2565	4th Sand 70,000' of gas
Slate Bk	S	2565	2600	
✓ Sand Wh	H	2600	2619	5th Sand
Total			2623	



1583  
110  

---

1693  
999  

---

794

1583  
805  

---

778