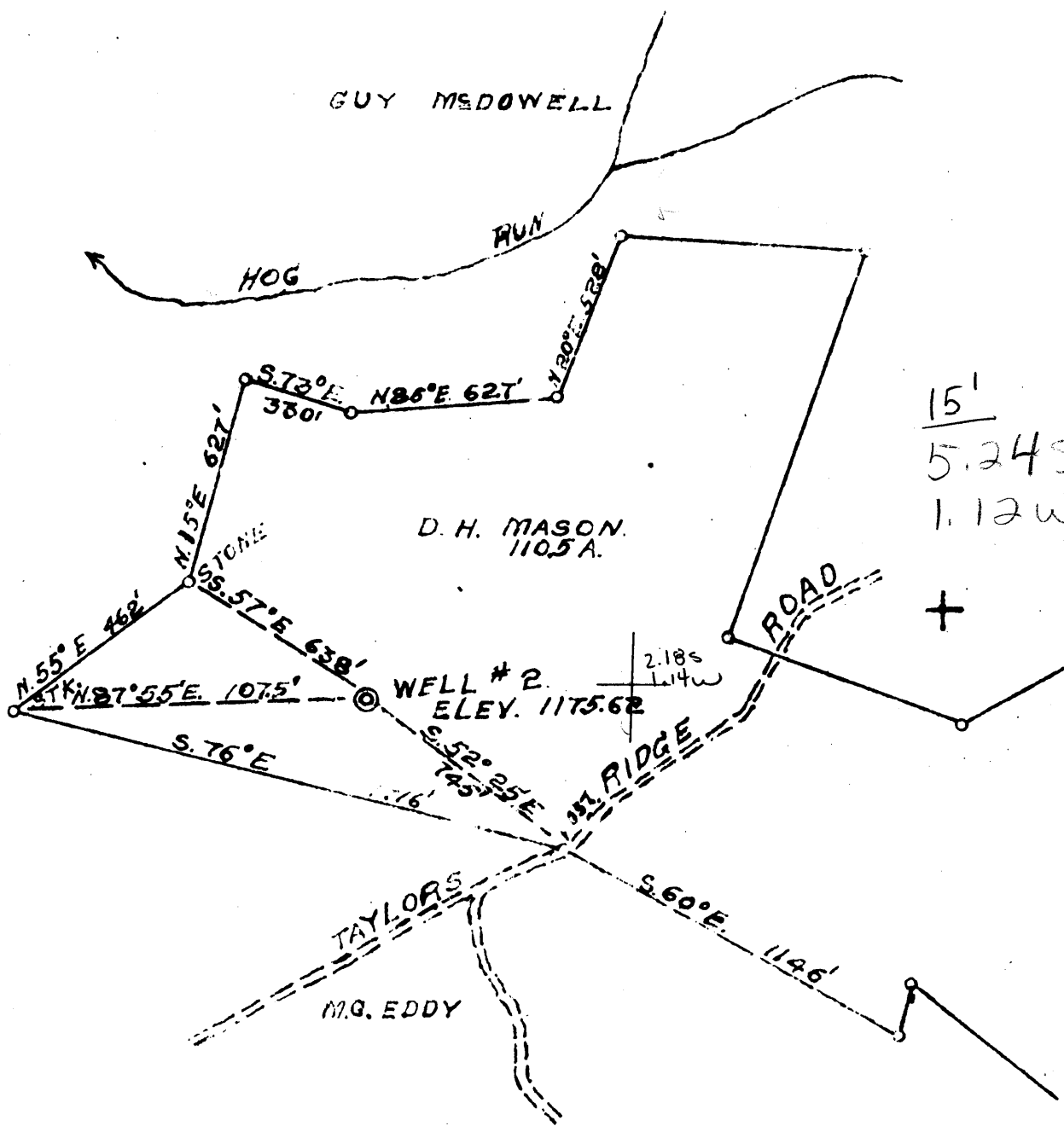


Latitude 39° 55'

39°52'30"

Longitude 80° 45'



New Location   
 Drill Deeper   
 Abandonment

Company CECIL E. TEDROW, THOS. F. MOORE  
 Address CECILE TEDROW WINDBRIDGE, PA. R. D.  
 Farm D. H. MASON  
 Tract Acres 110.5 Lease No. 2  
 Well (Farm) No. 2 serial No. \_\_\_\_\_  
 Elevation (Spirit Level) 1175.62  
 Quadrangle CLARINGTON  
 County MARSHALL District FRANKLIN  
 Engineer Lewis E. Mager  
 Engineer's Registration No. \_\_\_\_\_  
 File No. \_\_\_\_\_ Drawing No. \_\_\_\_\_  
 Date 10-22-45 Scale 1"=500'

STATE OF WEST VIRGINIA  
 DEPARTMENT OF MINES  
 OIL AND GAS DIVISION  
 CHARLESTON.

**WELL LOCATION MAP**  
 FILE NO. MARS-168

+ Denotes location of well on United States Topographic Maps, scale 1 to 62,500, latitude and longitude lines being represented by borderlines as shown.

- Denotes one inch spaces on border line of original tracing.



STATE OF WEST VIRGINIA  
DEPARTMENT OF MINES  
OIL AND GAS DIVISION

COPY

WELL RECORD

Permit No. MARS-168 Oil or Gas Well DRY(ND)

Company Cecil E. Tedrow & Thomas P. Moore  
Address RD #4 - Waynesburg, Pa.  
Farm D. H. Mason Acres 110.5  
Location (waters) Taylor's Ridge Road  
Well No. 2 Elev. 1175.32+  
District Franklin County Marshall  
The surface of tract is owned in fee by \_\_\_\_\_  
Address \_\_\_\_\_  
Mineral rights are owned by \_\_\_\_\_  
Address \_\_\_\_\_

Casing and Tubing	Used in Drilling	Left in Well	Packers
Size			
16			Kind of Packer
13			
10	204		Size of
8 1/4	1007		
6 5/8	1752		Depth set
5 3/16			
3			Perf. top
2			Perf. bottom
Liners Used			Perf. top
			Perf. bottom

Drilling commenced November 17, 1945  
Drilling completed January 20, 1946  
Date Shot From \_\_\_\_\_ To \_\_\_\_\_  
With \_\_\_\_\_  
Open Flow /10ths Water in \_\_\_\_\_ Inch  
/10ths Merc. in \_\_\_\_\_ Inch  
Volume \_\_\_\_\_ Cu. Ft.  
Rock Pressure \_\_\_\_\_ lbs. \_\_\_\_\_ hrs.  
Oil \_\_\_\_\_ bbls., 1st 24 hrs.  
Fresh water \_\_\_\_\_ feet \_\_\_\_\_ feet  
Salt water \_\_\_\_\_ feet \_\_\_\_\_ feet

CASING CEMENTED \_\_\_\_\_ SIZE \_\_\_\_\_ No. Ft. \_\_\_\_\_ Date \_\_\_\_\_

COAL WAS ENCOUNTERED AT 711 FEET 34 INCHES  
\_\_\_\_\_ FEET \_\_\_\_\_ INCHES \_\_\_\_\_ FEET \_\_\_\_\_ INCHES  
\_\_\_\_\_ FEET \_\_\_\_\_ INCHES \_\_\_\_\_ FEET \_\_\_\_\_ INCHES

Formation	Color	Hard or Soft	Top	Bottom	Oil, Gas or Water	Depth Found	Remarks
Surface	yellow	soft	0	30			
Slate	dark	soft	30	375			
Lime	dark	hard	375	398			
slate	dark	soft	398	680			
Lime	dark	hard	680	711			
COAL	dark	soft	711	718			
slate	dark	soft	718	1007			
Lime shells	dark	hard	1007	1440			
Sand <sup>Sand</sup>	dark	hard	1440	1540			
sand shells	dark	hard	1540	1760			
Lime <sup>fragments</sup>	dark	hard	1760	1780			
Sand <sup>Sand</sup>	dark	hard	1780	1947			
Total Depth				1947			

1760  
1176  
584