

Waynesburg

Alfred Bane + John Bulley

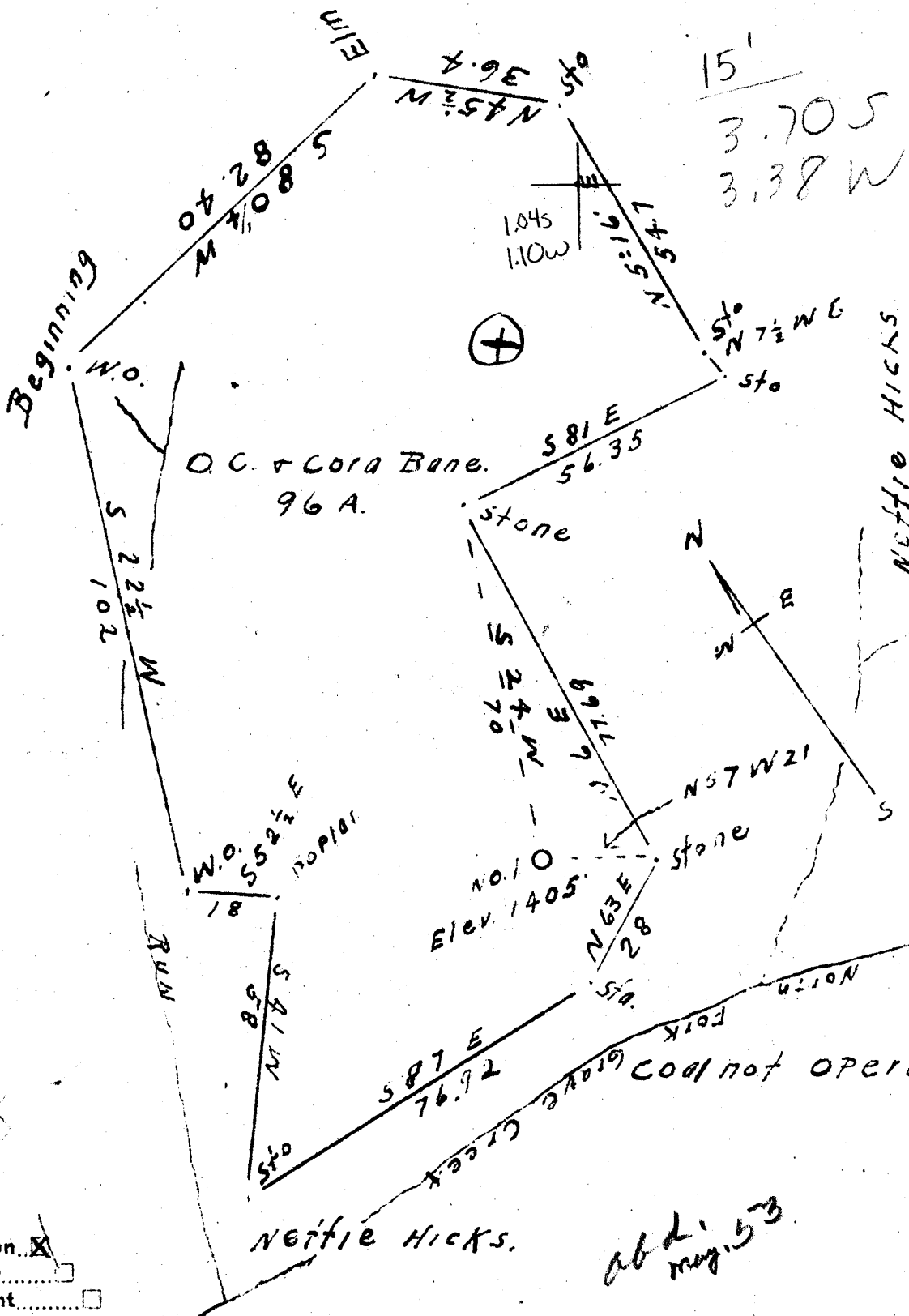
Turnpike

Parks Heirs

Nettie Hicks

Nettie Hicks

ab. 11/53



New Location
 Drill Deeper
 Abandonment

Company A. G. Isinminger.
 Address Cameron West Va.
 Farm O. C. + Cora Bane
 Tract 1 Acres 96 Leas: No.
 Well (Farm) No. One Serial No.
 Elevation (Spirit Level) 1405 Feet
 Quadrangle Cameron
 County Marshall District Cameron
 Engineer J. M. Cochran
 Engineer's Registration No. Co. Surveyor
 File No. Drawing No.
 Date July 20, 1945 Scale 1 inch = 30 Feet.

STATE OF WEST VIRGINIA
 DEPARTMENT OF MINES
 OIL AND GAS DIVISION
 CHARLESTON

WELL LOCATION MAP
 FILE NO. MARS-166

+ Denotes location of well on United States Topographic Maps, scale 1 to 62,500, latitude and longitude lines being represented by border lines as shown.
 - Denotes one inch spaces on border line of original tracing.

WEST VIRGINIA DEPARTMENT OF MINES
OIL & GAS DIVISION
W E L L R E C O R D

Permit No.. Mars 166

Cameron Quad..

Company

Address

Farm

Location

Well No.

District

Surface

Mineral

Commenced

Completed

Volume

Rock Pressure.

A.G. Isiminger

Cameron, W.Va.

O.C. & Cora Bane Acres 100

Grave Creek

One Elev. 1405

Cameron Marshall County

O.C. & Cora Bane, Cameron, W.Va.

Oil & Gas Rights, Cameron, W.Va.

Sept. 3, 1945

Sept. 25, 1945

140 thousand cubic feet

500 lbs. 24 hrs.

Gas Well
CASING & TUBING

10 277 None

8 1/2 1329'09 All

6 5/8 None

2 2142 2142

Anchor Packer

Size 8 1/2 x 2

Depth 2112

Casing not cemented

Coal at 929 to 935

Clay Lt	M	0	15
Sand Stone & Shells		15	110
Lime Rock Lt	H	110	160
Slate & Shells		160	638
✓ Coal Blossom	Waynesburg	638	640
Lime Lt	H	640	700
Slate Dk	S	700	750
Lime Lt	H	750	830
✓ Maple Town	Coal S	830	835
Lime Lt	H	835	929
✓ Pittsburgh	Coal S	929	935
Lime Lt	H	935	960
Red Rock	S	960	980
Slate Lt	S	980	1035
Sand Lt	H	1035	1080
Red Rock	S	1080	1110
Lime Lt	H	1110	1145
Slate Lt	S	1145	1200
Lime Dk	S	1200	1260
Red Rock	S	1260	1270
Slate Dk	S	1270	1305
Sand Lt	H	1305	1360
Slate Dk	S	1360	1400
Sand Lt	H	1400	1440
Slate Dk	S	1440	1540
Sand Lt	H	1540	1620
Slate Dk	S	1620	1735
Sand Lt	H	1735	1755
Slate Dk	S	1755	1780
Sand Lt	H	1780	1795
Slate Dk	S	1795	1890
Sand Lt	H	1890	1970
Slate Dk	S	1970	1980
Lime Lt	H	1980	2060
Sand Dk	H	2060	2142
TOTAL DEPTH			2142

1980
1405
575

1980
95
2075
1140

2075
795
670