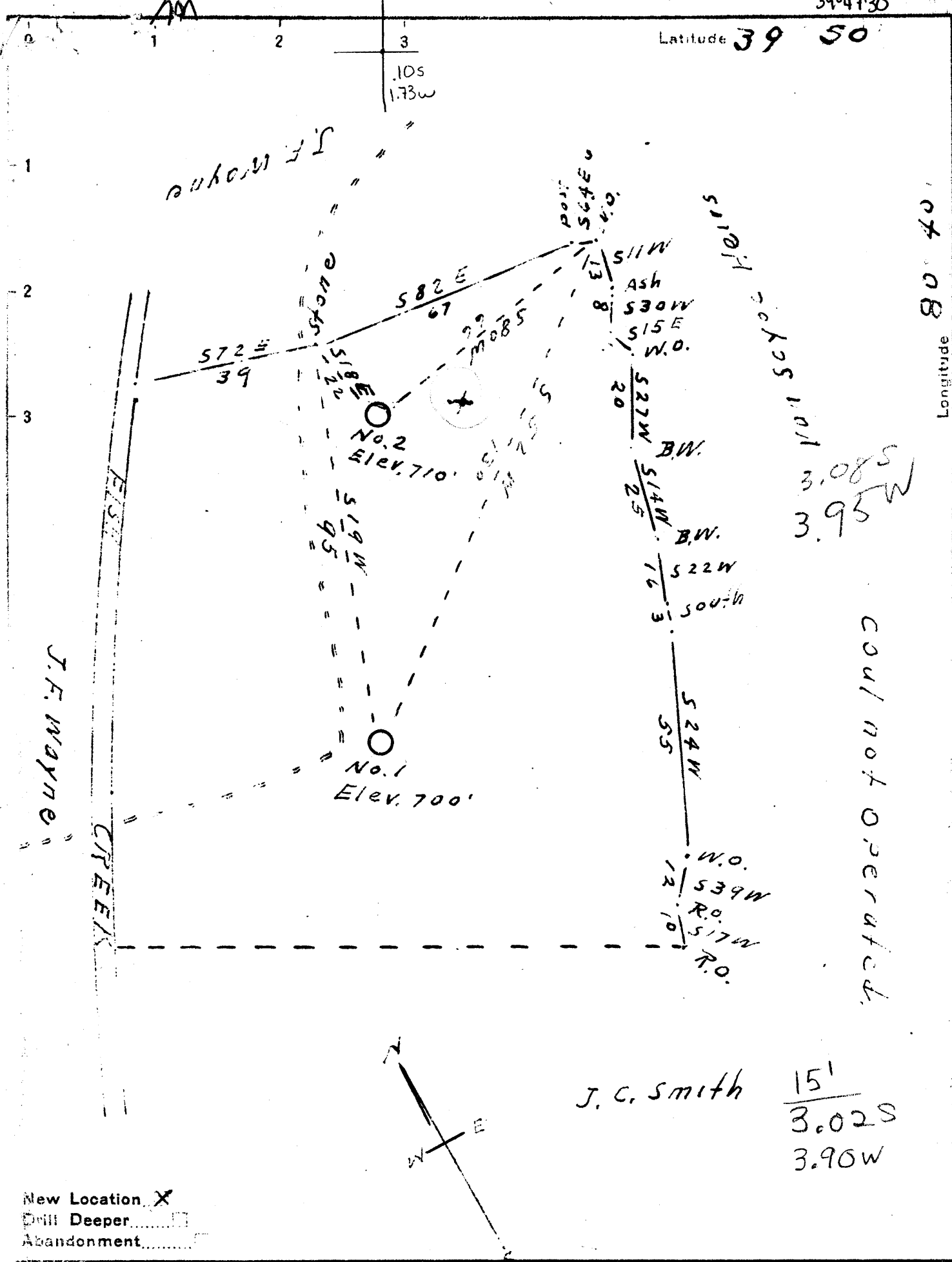


39°47'30"

Latitude 39 50

80°42'30"

Longitude 80 40



3.08 S
3.95 W

could not operate

J. C. Smith

15'
3.02 S
3.90 W

New Location X
Drill Deeper
Abandonment

Company Burley Oil Co.
 Address Cameron, West Va.
 Farm H. & T. W. Crow
 Tract One Acres 378 Lease No. _____
 Well (Farm) No. 1 & 2 Serial No. _____
 Elevation (Spirit Level) 700' & 710'
 Quadrangle Cameron. SW
 County Marshall District Meade
 Engineer J. M. Cochran.
 Engineer's Registration No. Co. Surveyor
 File No. _____ Drawing No. Wetzel Co
 Date 6-6-1944 Scale 1" = 30 Rods

STATE OF WEST VIRGINIA
DEPARTMENT OF MINES
OIL AND GAS DIVISION
CHARLESTON

WELL LOCATION MAP
FILE NO. MARS-15-P-#1

+ Denotes location of well on United States Topographic Maps, scale 1 to 62,500, latitude and longitude lines being represented by border lines as shown.
- Denotes one inch spaces on border line of original tracing.

WEST VIRGINIA DEPARTMENT OF MINES
OIL & GAS DIVISION
W E L L R E C O R D

Permit No. Mars 158
Cameron Quad.
Company
Address
Farm
Location
Well No
District
Surface
Mineral
Commenced
Completed

Burley Oil Co.
4409 Goff St., Wheeling, W.Va.
H.T. W Crow Acres 378
Fish Creek
One Elev. 700
Meade Marshall County
Kelly
Kelly
Aug. 21, 1944
Nov. 8, 1944

Dry Hole
CASING & TUBING

10 110
8 374
6 5/8 804
Coal at 313' 5'

EL 700-710

Swamp	Bl	S	1	50	Slate	Dk	S	1315	1320	
Lime	Lt	H	50	70	Sand	Lt		1320	1360	
Red Rock		S	70	80	Slate	Lt	S	1360	1367	
Lime	Lt	H	80	100	Big Lime	Wh		1367	1400	
Slate	Dk	S	100	120	Big Injun	Wh		1400	1433	
Lime	Lt	H	120	140	Slate	Lt	S	1433	1435	
Slate	Dk	S	140	160	Sand			1435	1480	
Lime	Lt	H	160	220	Slate	Lt	S	1480	1485	
Slate	Dk	S	220	225	Sand	Lt	M	1485	1500	
Mapletown Coal	Bk	S	225	230						
Lime	Lt	H	230	310	TOTAL DEPTH				1500	
Slate	Dk	S	310	313						
Pitts. Coal	Bk		313	318						
Slate	Bk	S	318	328						
Lime	Lt	H	328	335						
Slate	Dk	S	335	350						
Broken Lime	Gr	S	360	370						
Red Rock		S	370	375						
Slate	Dk	S	375	380						
Sand	Wh		380	395						
Slate	Dk	S	395	406						
Sand show oil		S	406	412						
Pink Rock		S	412	420						
Shale	Lt	S	420	435						
Red Rock		S	435	469						
Lime	Lt	H	469	475						
Shale	Lt	S	475	485						
Red Rock		S	485	506						
Lime	Lt	H	506	512						
Shale	Dk	S	512	572						
Red Rock		S	572	594						
Mud	Bl	S	594	600						
Shale	Dk	S	600	606						
Red Rock		S	606	610						
Lime	Lt	H	610	635						
Mud	Wh	S	635	640						
Slate	Dk	S	640	684						
Red Rock		S	684	695						
Shale	Dk	S	695	796						
Pink Rock		S	796	815						
B. Dunkard	Gr		815	835						
Lime	Gr	H	835	890						
Sand	Wh		890	910						
Coal	Bk		910	915						
Lime	Lt	H	915	947						
Sand	Lt		947	954						
Shale	Dk	S	954	974						
Sand-Water	Lt		974	985						
Slate	Dk	S	985	1010						
Sand	Lt		1010	1028						
Lime	Wh	H	1028	1052						
Sand	Lt		1052	1070						
Coal	Bk	S	1070	1072						
Slate	Dk	S	1072	1095						
Sand	Dk		1095	1128						
Slate	Dk	S	1128	1203						
Sand Salt	Gr	H	1203	1225						
Slate	Dk	S	1225	1245						
Sand	Lt	H	1245	1315						

1367
 75

 1442
 700

 742

(375)

1367
700

667