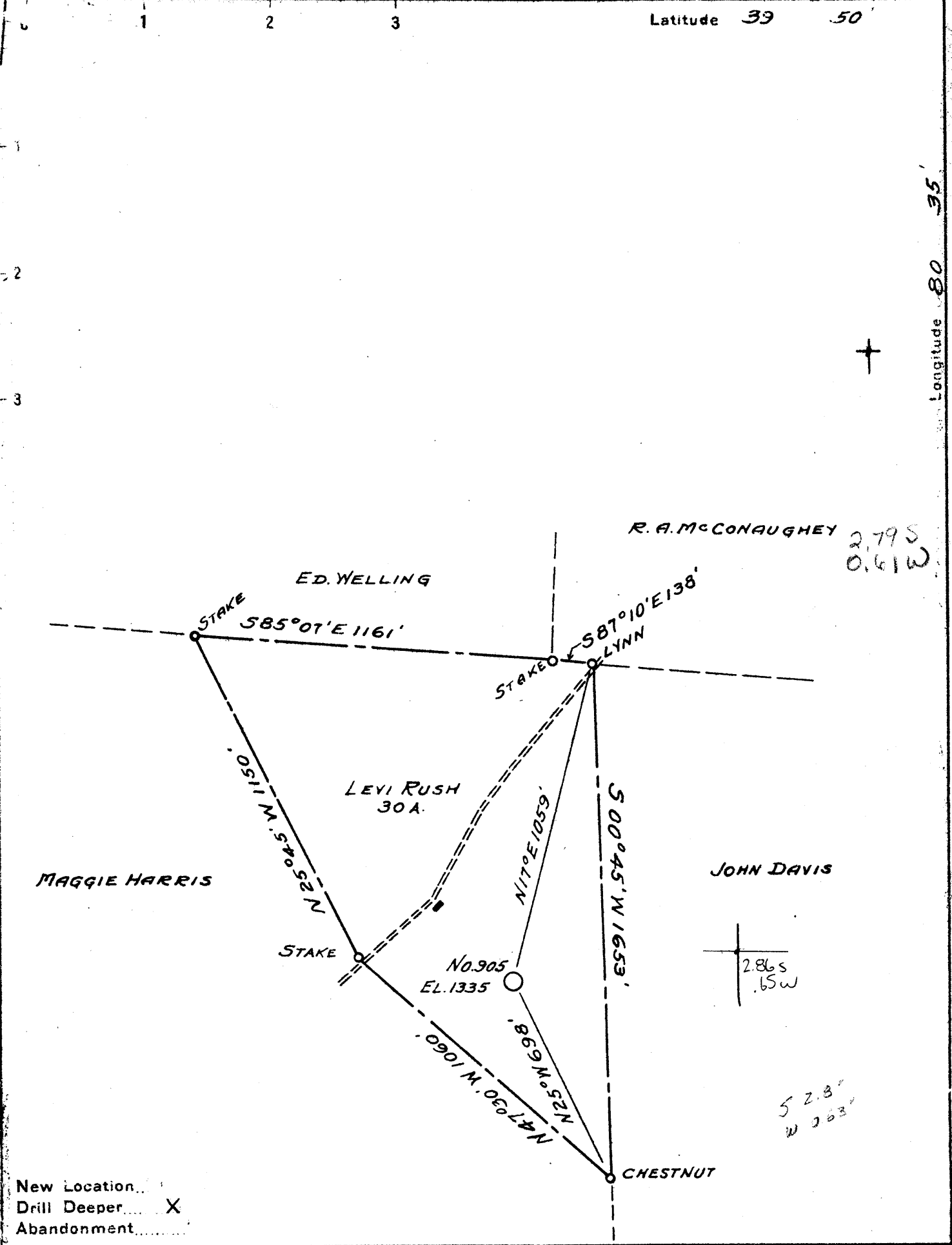


39°50'00"

Latitude 39 50

80°35'00"

Longitude 80 35



New Location...  
 Drill Deeper... X  
 Abandonment...

Company CARNEGIE NATURAL GAS Co.  
 Address PITTSBURGH, PA.  
 Farm LEVI RUSH  
 Tract \_\_\_\_\_ Acres 30 Lease No. E-9864-48  
 Well (Farm) No. 1 Serial No. 905  
 Elevation (Spirit Level) 1335'  
 Quadrangle CAMERON S.E. 1/4 Sec 19  
 County MARSHALL District LIBERTY  
 Engineer D.T. BRITTON  
 Engineer's Registration No. \_\_\_\_\_  
 File No. \_\_\_\_\_ Drawing No. \_\_\_\_\_  
 Date 7-20-43 Scale 1" = 400'

STATE OF WEST VIRGINIA  
 DEPARTMENT OF MINES  
 OIL AND GAS DIVISION  
 CHARLESTON

WELL LOCATION MAP  
 FILE NO. MARS-143

+ Denotes location of well on United States Topographic Maps, scale 1 to 62,500, latitude and longitude lines being represented by border lines as shown.  
 - Denotes one inch spaces on border line of original tracing.

LEVI RUSH NO. 1 (905) WELL.

Liberty District, Marshall County, W. Va.  
 By Carnegie Natural Gas Co.  
 Map, Cameron SE.  
 On.....acres.

Drilling commenced March 19, 1919; completed, April 24, 1919.  
 Deepened March 20, 1924, from 2241'.  
 Open flow, 5,941,000 cu. ft. (Big Injun); 413# R. P.  
 225,000 cu. ft.; 545# R. P.; (Gordon Stray).  
 Record from Wilcox Sept. 27, 1939.

MARS-143

	Top.	Bottom.
✓ Waynesburg Coal	680	- 683
✓ Mapletown (Sewickley) Coal	873	- 878
✓ Pittsburgh Coal (567-572' on record)	967	- 972
✓ Murphy Sand	1190	- 1200
✓ Little Dunkard Sand	1385	- 1392
✓ Big Dunkard Sand	1450	- 1512
✓ 1st Gas Sand	1606	- 1675
✓ 1st Salt Sand	1685	- 1705
✓ 2nd Salt Sand	1970	- 1975
✓ Marton Sand (show gas, 2022')	2020	- 2040
✓ Little Lime	2073	- 2078
✓ Pencil Cave	2078	- 2080
✓ Big Lime	2080	- 2135
✓ Big Injun Sand (gas, 2230-32' and 2237-40'; 5,941,000 cu. ft.; 413# R. P.) DRILLED DEEPER March 20, 1924, from 2241'	2135	- 2375
Red rock	2827	- 2872
✓ Gordon Stray Sand (gas, 2927-28' and 2950-52'; 225,000 cu. ft.; 545# R. P.)	2824	- 2952
✓ Gordon Sand	2954	- ....
Total depth		2954

2080  
1385  
1450

WEST VIRGINIA DEPARTMENT OF MINES  
OIL & GAS DIVISION  
W E L L R E C O R D

Permit No. Mars 143		OIL & GAS WELL
Cameron Quad. S.E.		CASING & TUBING
Company	Carnegie Natural Gas Company	
Address	1014 Frick Bldg., Pittsburgh, Pa.	
Farm	Levi Rush Acres 30	10 115
Location	Big Run	8 1/2 1373
Well No	E-905 Elev. 1335	6 5/8 2088
District	Liberty Marshall County	2 2954
Surface	M.H. Mason, R.D. #5, Cameron, W.Va.	
Mineral	W.W. Howard & C.G. Howard (1/2)	
	M.H. Maxon (1/2), Cameron, W.Va.	
Commenced	July 2, 1943	
Completed	Aug. 3, 1943	
Oil	2976' - 2978' 6 9 gal. in 15 hrs.	

DEEPER DRILLING

Commenced drilling deeper		2954	
<del>Gordon Stray</del> Lt H	2924	2956	
Slate Dk S	2956	2973	
<del>Gordon Sand</del> Lt H	2973	3005	Oil 2976' - 2978' 6
Lime Lt H	3005	3025	
Slate Dk S	3025	3039	
Sand Lt S	3039	3046	
Slate Lt S	3046	3058	
Lime Shells Lt S	3058	3184	
TOTAL DEPTH	3184		

3184  
2954  
-----  
230