

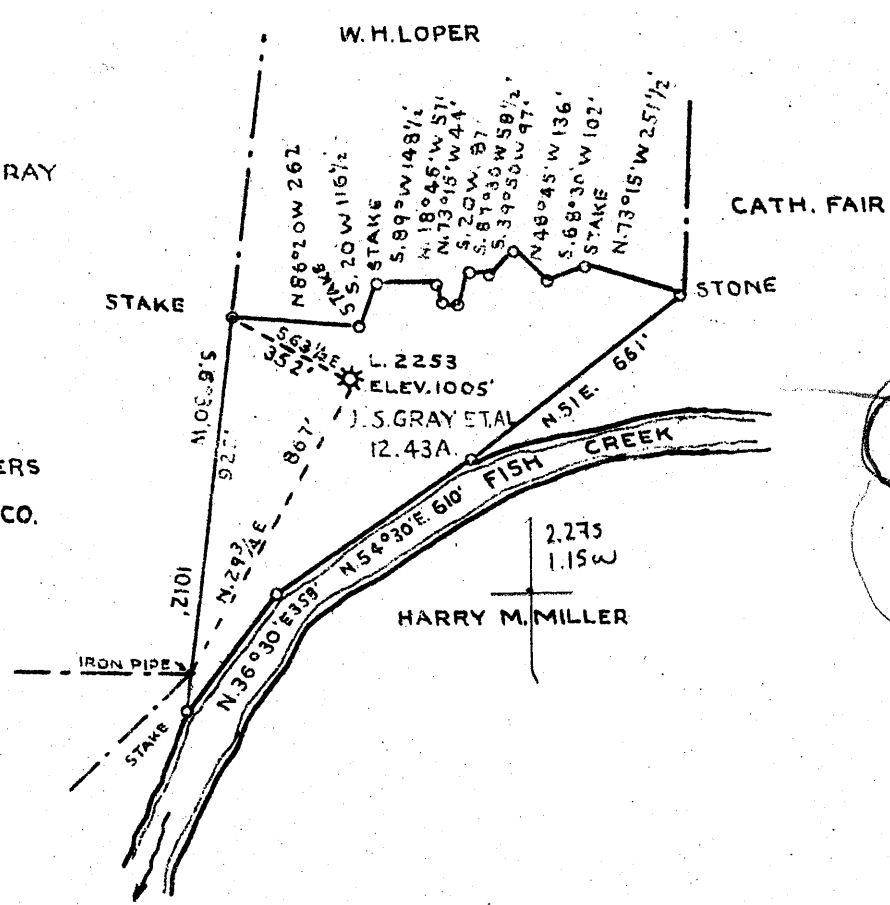
39°47'30"

Latitude 39 50

Longitude 80 35

90°35'00"

5.14S  
1.03W



5.13S  
1.04W

COAL OWNED BY BELTON FUEL COMPANY.  
MRS. VELMA HUDOC, UNIONTOWN PA.

- New Location..
- Drill Deeper.....
- Abandonment.....

5.25  
1.44W

Company THE MANUFACTURERS LIGHT AND HEAT CO  
 Address 800 UNION TRUST BLD'G. PITTSBURGH. PA.  
 Farm J.S. GRAY ET AL.  
 Tract Acres 12.43 Lease No. 6843  
 Well (Farm) No. 1 Serial No. 2253  
 Elevation (Spirit Level) 1005'  
 Quadrangle CAMERON SE 1/4  
 County MARSHALL District LIBERTY  
 Engineer *W. Mercer*  
 Engineer's Registration No.  
 File No. Drawing No. Y-10-587  
 Date MARCH 27, 1942 Scale 1" = 500'

STATE OF WEST VIRGINIA  
 DEPARTMENT OF MINES  
 OIL AND GAS DIVISION  
 CHARLESTON

WELL LOCATION MAP  
 File No. MARS-130

+ Denotes location of well on United States Topographic Maps, scale 1 to 62,500, latitude and longitude lines being represented by border lines as shown.

— Denotes one inch spaces on border line of original tracing

WEST VIRGINIA DEPARTMENT OF MINES  
OIL & GAS DIVISION  
W E L L R E C O R D

Permit No. Mars 130	(Drilled in 1918)	Gas Well
Cameron Quad.		CASING & TUBING
Company	The Mfrs. Light & Heat Co.	
Address	800 Union Trust Bldg., Pitts., Penna.	10 337'6 337'6
Farm	J.S. Gray Acres 14	8½ 815 815
Location	---	6½ 1554 1554
Well No	1-2253 Elev. --- 1005'	4 2793'7
District	<u>Liberty Marshall County</u>	
Surface	Dora Gray, Cameron, W. Va.	
Mineral	The Mfrs. Light & Heat Co.,	Coal at 275' 72"
	800 Union Trust Bldg., Pitts., Penna.	565' 60"
Commenced	March 28, 1918	
Completed	April 24, 1918	

DRILLED DEEPER

Surface Soil	0	15	
Limestone	15	265	DRILLED DEEPER
Slate	265	275	Commenced 7-29-42
✓ Coal	275	281	Completed 11-11-42
Limestone	281	312	Flow 24/10ths W 1½"
Slate	312	337	Volume 86,406 CF
Limestone	337	408	Rock Pressure 72 lbs. 48 hrs.
Slate	408	460	✓ Maxon Sand 1609 1635
Limestone	460	515	✓ Little Lime 1635 1642
Sand, White	515	565	✓ Pencil Cave 1642 1647
✓ Pitts. Coal	565	570	✓ Big Lime 1647 1695
Slate	570	585	✓ Big Injun Sand 1695 1940
Sand	585	600	Slate 1940 2385
Limestone	600	680	Pink Rock 2385 2390
Sand	680	702	Slate 2390 2492
Red Rock	702	740	✓ 50' Sand 2492 2507
Limestone	740	780	Slate 2507 2556
Red Rock	780	795	✓ Gordon Stray 2556 2576
Slate	795	820	Slate 2576 2600
Limestone	820	840	✓ Gordon Shells 2600 2604
Slate	840	880	Slate 2604 2615
Red Rock	880	900	✓ 4th Sand 2615 2625
Limestone	900	925	Slate 2625 2694
Slate	925	950	✓ 5th Sand Shells 2694 2704
Red Rock	950	984	Slate 2704 2748
Lime	984	989	TOTAL DEPTH 2748
Slate	989	1019	
Shale	1019	1060	Pencil Cave cemented
Slate	1060	1075	Break 1820 to 1823
Lime	1075	1085	Gas 2497' S. L at 2502
Slate	1085	1095	Gas from 50' and Gordon Stray;
Sand	1095	1115	when it came in was 32/10 W in 2"
Black Slate	1115	1165	249 MCF
Lime	1165	1175	
Slate	1175	1190	
Lime	1190	1200	
Slate	1200	1225	
Shale	1225	1250	
Lime	1250	1275	
Slate	1275	1295	
Slate	1295	1342	
Shale	1342	1377	
Lime	1377	1390	
Sand	1390	1405	
Shale	1405	1430	
Slate	1430	1450	
Slate	1450	1487	
Sand Shells	1487	1498	
Slate	1498	1582	
Shell	1582	1585	
✓ Maxon Sand	1585	1588	First Gas
Sand	1588	1593	
Sand, Very had	1593	1599	
Sand	1599	1602	Sandy Formation
Sand	1602	1609	Second Pay

*DL 1609*  
*1609*  
*1139*