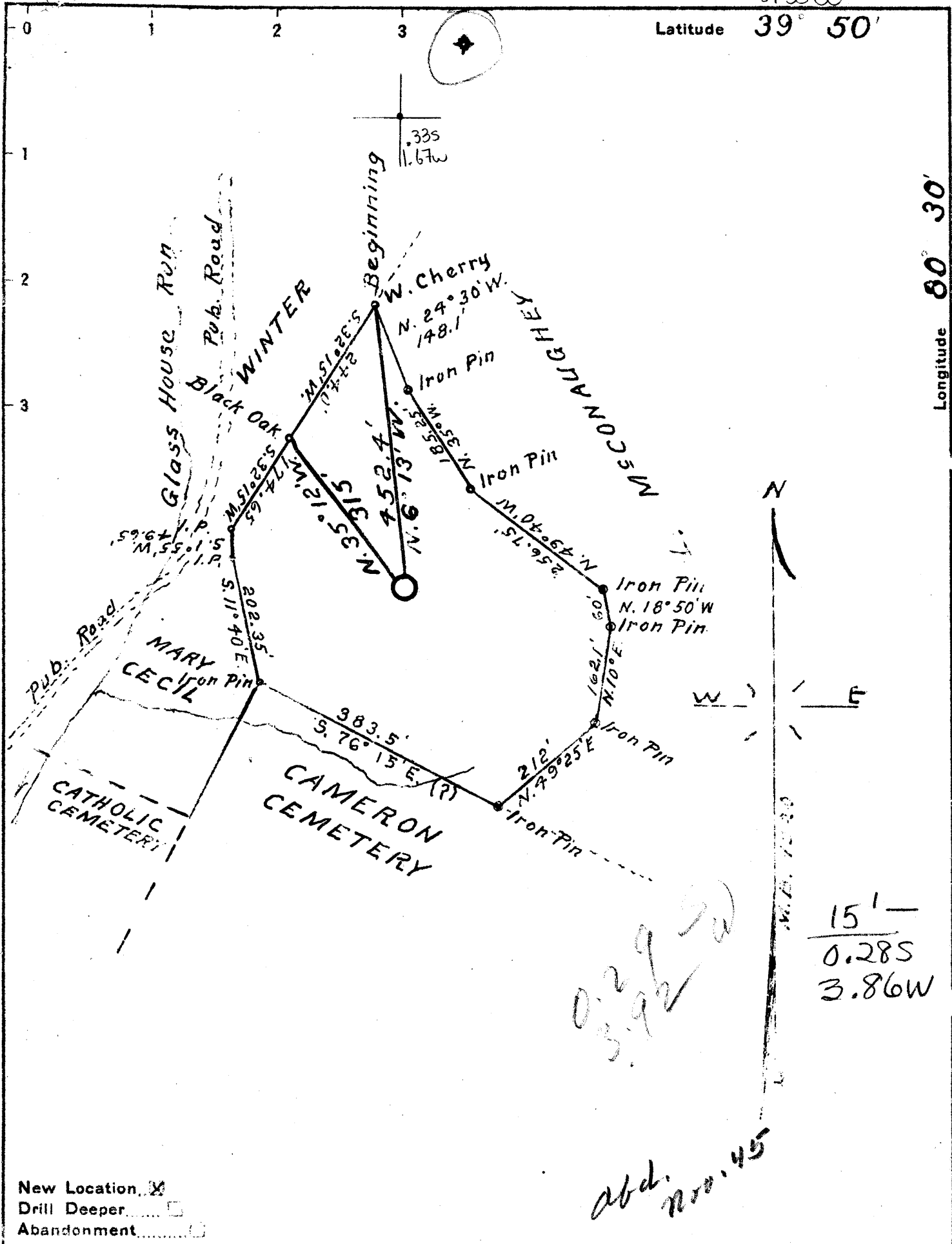


39° 50' 00"

Latitude 39° 50'

Longitude 80° 30'



15' —
 0.285
 3.86W

0.285
 3.86W

abd. no. 45

New Location
 Drill Deeper
 Abandonment

Company CAMERON LIGHT & HEAT CO.
 Address CAMERON, W. VA.
 Farm CAMERON CEMETERY ASSOC.
 Tract 1 Acres 7 ± Lease No. _____
 Well (Farm) No. 1 Serial No. _____
 Elevation (Spirit Level) 1150.3
 Quadrangle CAMERON ^{SE}
 County MARSHALL District CAMERON in Town of Cameron
 Engineer GORDON W. SAMMONS
 Engineer's Registration No. 509
 File No. _____ Drawing No. _____
 Date 7-7-1941 Scale 1" = 200'

STATE OF WEST VIRGINIA
 DEPARTMENT OF MINES
 OIL AND GAS DIVISION
 CHARLESTON

WELL LOCATION MAP
 FILE NO. MARS-119

+ Denotes location of well on United States Topographic Maps, scale 1 to 62,500, latitude and longitude lines being represented by border lines as shown.
 - Denotes one inch spaces on border line of original tracing.

WEST VIRGINIA DEPARTMENT OF MINES
OIL & GAS DIVISION
W E L L R E C O R D

Permit No.	Mars-119	Gas Well		
Cameron Quad.				
Company	Cameron Heat & Light Company	10	301'5"	301'5"
Address	Cameron, W. Va.	8 $\frac{1}{2}$	1183	1183
Farm	Cameron Cemetery Association-Tract	6- 5 8	1914	1914
Well No.	1	Elev. 1150.3	5- 3 5	2180'9" 2180'9"
District	Cameron Marshall County			Packer - Anchor
Surface	Cameron Cemetery Ass., Cameron, W. Va.	Size	6- 5 8	
Commenced	July 15, 1941	Depth set		1809
Completed	August 16, 1941	Perf. top		1809
Flow	92/10ths Water in 2" orifice	Perf. bot.		1831
Volume	300,000 Cu. Ft.	Coal	526-530	
Rock Pressure	590# 24 hrs.		705-710	
			805-812	

✓ Waynesburg Coal	s	526	530	
✓ Mapletown Coal	s	705	710	
✓ Pittsburgh Coal	s	805	812	
Red Rock	s	910	955	
Red Rock	s	1060	1094	
✓ L. Dunkard wh	h	1172	1195	
✓ Big Dunkard wh	h	1262	1318	
✓ 1st Salt Sand	h	1552	1583	Gas show 1575
✓ 2nd Salt Sand	h	1665	1695	
✓ 3rd Salt Sand	h	1750	1831	Gas 1813 to 1818
✓ Maxon wh	h	1862	1880	
✓ Big Lime wh	h	1900	1950	
✓ Big Injun wh	h	1950	2205	Break 2010-2015 W. 2035-40' 1BPH
✓ 30 Foot wh <i>here</i>	h	2544	2562	
Pink Rock pk	s	2650	2678	
✓ 50 Foot lt		2750		Gas at 2752 to 2760'
Total Depth			2766	
Stopped drilling at		2766'		in 50 Foot Sand

1 - 5-3/16X16 Disc Wall Packer used on bottom of 5" casing
 1 - 5-3/16X16 Anchor Packer used in 5" casing set on 1553'8"

1950
1138
- 800

2000
1150

850

1900
1150

750

WEST VIRGINIA DEPARTMENT OF MINES
OIL & GAS DIVISION
W E L L R E C O R D

Permit No. Mars 119 D		Gas Well
Company	Cameron Heat & Light Co.	CASING & TUBING
Address	Cameron, W.Va.	10 301'5 301'5
Farm	Cameron Cemetery Tract Acres ---	8 $\frac{1}{2}$ 1183 1183
Location	---	6 $\frac{5}{8}$ 1914 1914
Well No	1 Elev. 1150.3	5 $\frac{3}{16}$ 2180'9 2180'9
District	Cameron Marshall County	
Surface	Cameron Cemetery Assoc. Cameron, W.Va.	
Mineral	Same	
Commenced	April 28, 1942	
Completed	May 5, 1942	
Shot	May 5, 1942 Depth 2805-2815	
	Depth 2752-2762	
	50 qts. glycerine	
Flow	26/10ths W in 1 $\frac{1}{2}$ " orifice	
Volume	89,000 C.F.	
Rock Pressure	190 lbs. 24 hrs	

DRILLED DEEPER

✓ 50'	Lt	H		2750	2772
	Slate	Dk	S	2772	2805
✓ Gordon	Dk	H		2805	2850
	Slate	Dk	S	2850	2875
✓ 4th Sand	Wh	H		2875	2880

TOTAL DEPTH 2921

Gas at 2752 to 2760
Gas at 2852 to 2862

2921
2766

155 - DD 276