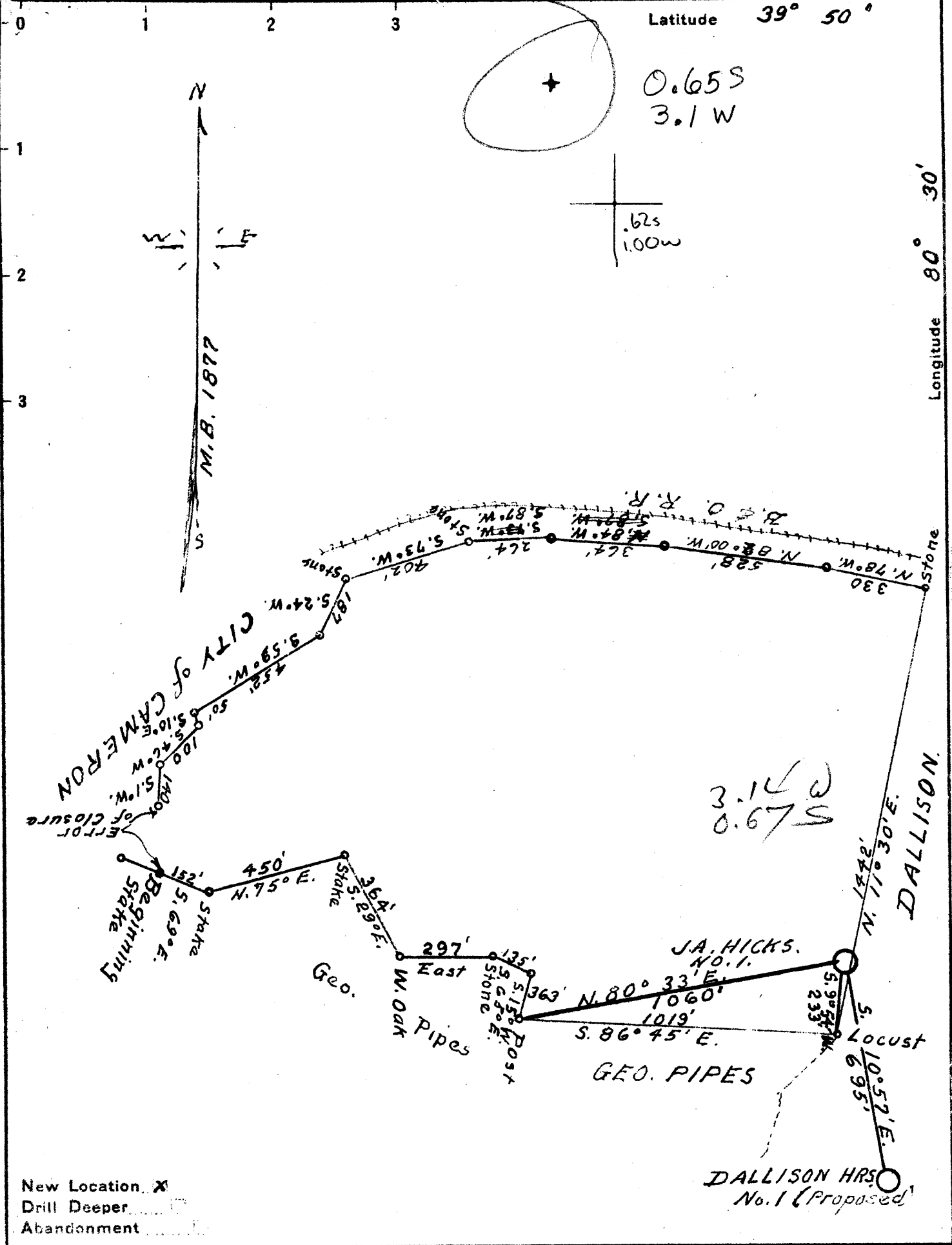


39°50'00"

Latitude 39° 50'

80°37'30"

Longitude 80° 30'



New Location X
 Drill Deeper
 Abandonment

Company GUY B. & A.G. PATTERSON
 Address CAMERON, W. VA.
 Farm J.A. HICKS HRS.
 Tract J.A. HICKS Acres 60 Lease No. _____
 Well (Farm) No. 1 Serial No. _____
 Elevation (Spirit Level) 1326
 Quadrangle CAMERON
 County MARSHALL District CAMERON
 Engineer Gordon W. Sammons
 Engineer's Registration No. 509
 File No. _____ Drawing No. _____
 Date 5-7-1941 Scale 1" = 400'

STATE OF WEST VIRGINIA
 DEPARTMENT OF MINES
 OIL AND GAS DIVISION
 CHARLESTON

WELL LOCATION MAP
 FILE NO. MARS-118

+ Denotes location of well on United States Topographic Maps. scale 1 to 62,500, latitude and longitude lines being represented by border lines as shown.
 - Denotes one inch spaces on border line of original tracing.

WEST VIRGINIA DEPARTMENT OF MINES
OIL & GAS DIVISION
W E L L R E C O R D

Permit Mars-118

Company Guy D. & A. G. Patterson
Address Cameron, West Virginia
Farm John A. Hicks Heirs Acres 20
Location Grave Creek
Well No 1 Elev. 1326
District Cameron Marshall County
Surface ~~John Hicks Heirs, Cameron, W. Va.~~
Mineral ---
Commenced May 1, 1941
Completed June 30, 1941
Shot 6/30/41 Depth--60 qts. Glycerine
Flow 50 3/4 plate -W
Rock Pressure 24# 48 Hrs.
Water See note below

Gas Well
Casing & Tubing
10 201 201
8 1/4 1346 1346
6 5/8 2068 2068

Clay	Y	S	0	20	Shale	Gr	S	1180	1220
Sand	Gr	H	20	26	Red Rock	R	S	1220	1265
Shale	Dk	S	26	105	Sand & Lime	Wh	M	1265	1300
Sand	Gr	S	105	120	Slate	Bk	S	1300	1312
Shale	Dk	S	120	180	Pink Rock		S	1312	1325
Lime	Wh	S	180	190	Sand	Wh	H	1323	1333
Shale	Dk	S	190	280	Pink Rock		S	1333	1343
Lime	Wh	H	280	290	✓ L. Dunkard	Wh	H	1343	1385
Shale	Gr	S	290	295	Shale	Bk	M	1385	1420
Sand	Wh	H	295	340	✓ B. Dunkard	Wh	H	1420	1465
Shale	Gr	S	340	365	✓ Coal	Bk	S	1465	1467
Lime	Wh	H	365	375	Lime & Sand	Wh	H	1467	1543
Slate	Gr	S	375	400	Shale	Gr	M	1543	1580
Lime & Sandy	Gr	H	400	450	Sand & Lime	Wh	H	1580	1643
Slate	Gr	S	450	460	Slate	Gr	S	1643	1700
Sand & Lime	Wh	H	460	500	✓ 1st Salt S.	Wh	M	1700	1740
Slate	Gr	S	500	540	Slate	Gr	M	1740	1770
Lime	Wh	H	540	580	✓ Sand	Wh	H	1770	1842
Shale	Wh	S	580	600	Slate	Gr	S	1842	1877
✓ Coal	Bk	S	600	603	✓ Sand	M	H	1926	1979
Slate	Gr	S	603	610	✓ Sand-Maxon	Wh	H	1980	2032
Bluff Sand	Wh	H	610	669	✓ Pencil Cave	Dk		2032	2068
✓ Waynesburg Coal	Bk	S	669	673	✓ Big Lime	Wh	H	2068	2103
Lime	Wh	H	673	708	✓ Big Injun	Y & Gr	H	2103	2352
Shale	Gr	S	708	715	Lime	Gr	M	2352	2590
Lime	Wh	H	715	745	Slate	Wh	S	2590	2714
Shale	Wh	S	745	750	✓ 30' Sand	Wh	H	2714	2730
Lime	Wh	H	750	840	Shells	Wh	H	2730	2809
Slate	Dk	S	840	849	Pink Rock		M	2809	2850
✓ Mapletown Coal	Bk	S	849	853	Slate	Gr	S	2850	2900
Lime	Wh	H	953	948	✓ 50'	Wh	H	2900	2927
✓ Pitts. Coal	Bk	S	948	954	Slate		S	2927	2960
Lime	Wh	H	954	1030	✓ Gordon St.	Wh	H	2965	2987
Sand	Wh	M	1030	1085	Slate		S	3002	3023
Red Rock		M	1085	1100	✓ 4thsand	Wh	H	3023	3029
Lime	Wh	H	1100	1124	TOTAL DEPTH				3108
Pink Rock	Pink	S	1124	1140					
✓ Murphy S. & Lime	Wh	H	1140	1152	Water 220' little				
Lime	Wh	M	1152	1161	Water about 948' enough to drill				
Pink Rock	Pink	M	1161	1180	1979 1' break				
					2352--4 breaks				
					Little Gas 2906 6/10W 3/8P. 6000				
					Gas 2972 50/10 W 1/4 plate. 36,000				
					Well makes 40 gals. water each 24 hrs.				
					from Gordon Pay				

2068
1326
742

2168
1326
832

2068
1326
742