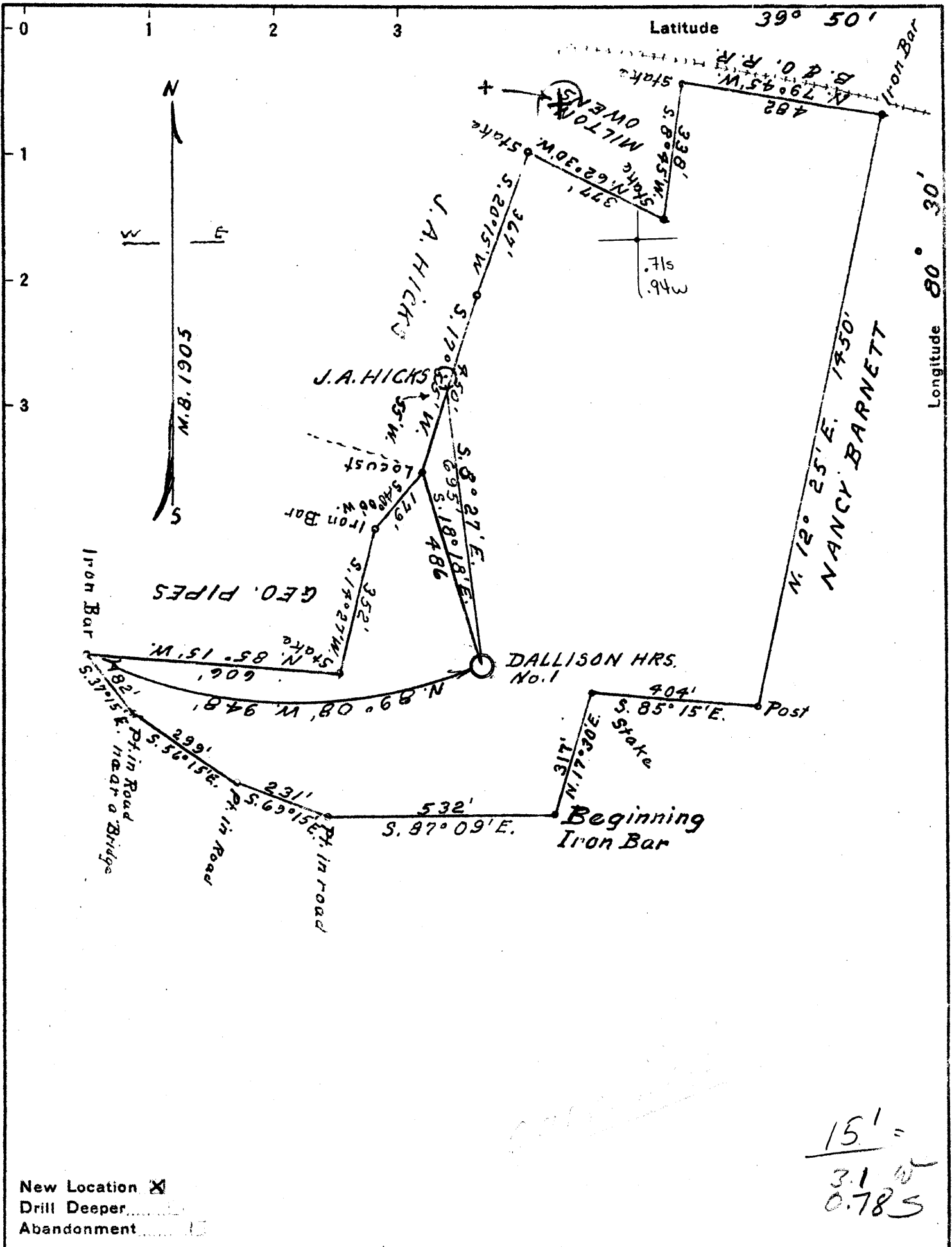


39°50'00"



80°32'30"

Longitude 80° 30'

Latitude 39° 50'

New Location
 Drill Deeper
 Abandonment

15' =
 3.1
 0.785

Company GUY B. & A.G. PATTERSON
 Address CAMERON, W.VA.
 Farm S.B. DALLISON-HRS.
 Tract _____ Acres 35.03 Lease No. _____
 Well (Farm) No. 1 Serial No. _____
 Elevation (Spirit Level) 1225
 Quadrangle CAMERON
 County MARSHALL District CAMERON
 Engineer GORDON W. SAMMONS
 Engineer's Registration No. 509
 File No. _____ Drawing No. _____
 Date May-7-1941 Scale 1" = 300'

STATE OF WEST VIRGINIA
 DEPARTMENT OF MINES
 OIL AND GAS DIVISION
 CHARLESTON

WELL LOCATION MAP
 FILE NO. MARS-117

+ Denotes location of well on United States Topographic Maps, scale 1 to 62,500, latitude and longitude lines being represented by border lines as shown.

- Denotes one inch spaces on border line of original tracing.