

New Location
 Drill Deeper
 Abandonment

Company CARL D. PERKINS
 Address PENNSBORO, WV 26415
 Farm TIMOTHY YOHO
 Tract 1 Acres 500 ± Lease No. 2857
 Well (Farm) No. 6 Serial No. 3583
 Elevation (Spirit Level) 1229'
 Quadrangle NEW MARTINSVILLE (N.E.)
 County MARSHALL District FRANKLIN
 Engineer A. J. Russell
 Engineer's Registration No. _____
 File No. _____ Drawing No. Y-8 479
 Date SEPT. 15, 1939 Scale 1" = 1320' - 80RDS.

STATE OF WEST VIRGINIA
 DEPARTMENT OF MINES
 OIL AND GAS DIVISION
 CHARLESTON

WELL LOCATION MAP
 File No. MARS-104-P

+ Denotes location of well on United States Topographic Maps, scale 1 to 62,500, latitude and longitude lines being represented by border lines as shown.

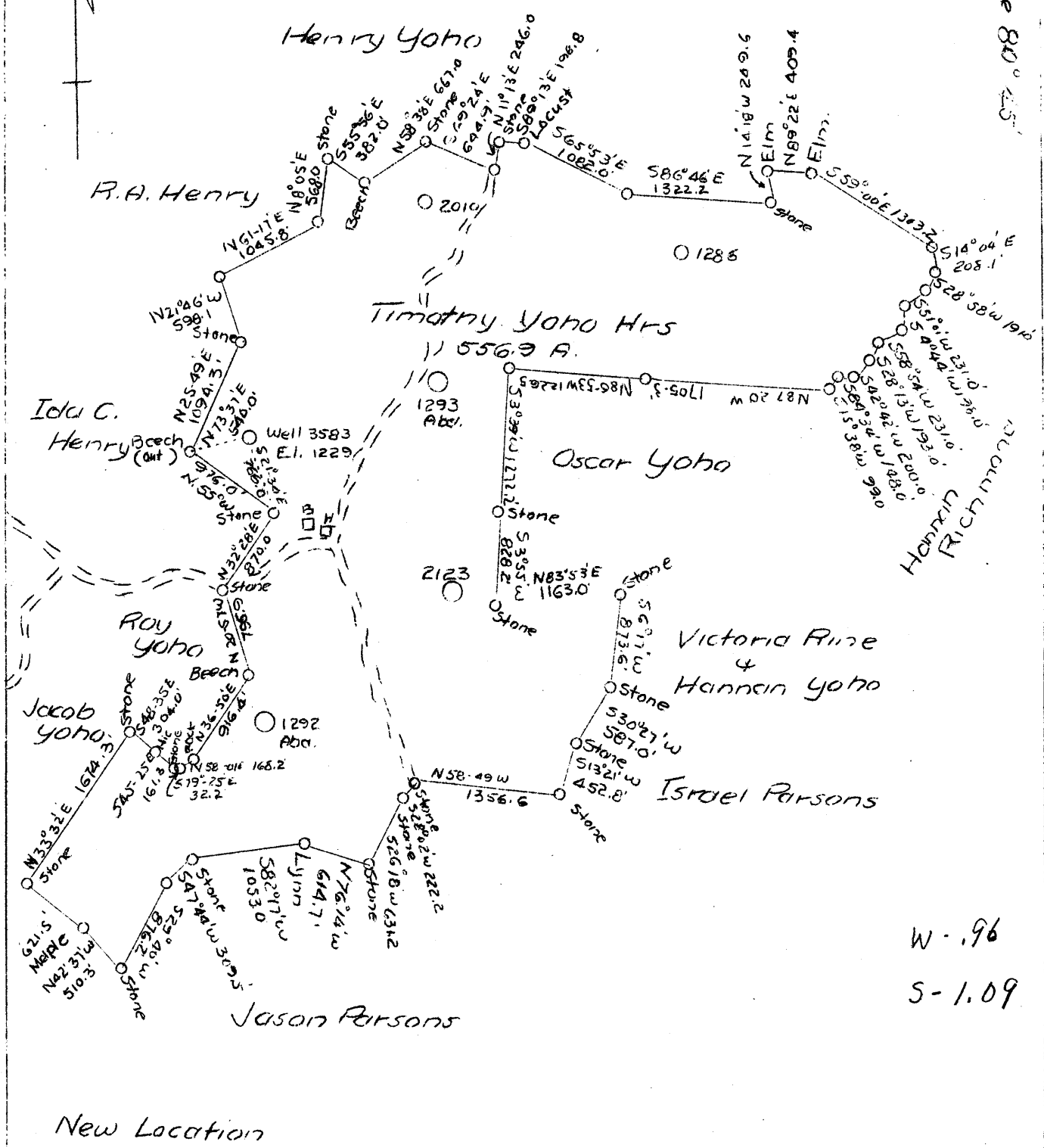
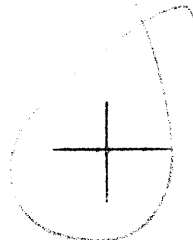
— Denotes one inch spaces on border line of original tracing.

47-051

JUL 28 1975

Latitude 39° 45'

Longitude 81° 45'



W-.96
S-1.09

Company The Manufacturers Light & Heat Company
 Address 800 Union Trust Bldg., Pittsburgh, Pa.
 Name Timothy Yoho
 Tract 1
 Acres 500 plus - Serial 2857
 Well (Farm) No. 6 Lease #3583
 Elevation (SL) 1229
 Quadrangle New Martinsville N. E.
 County Marshall
 District Franklin
 Engineer A. J. Russell
 Eng. Reg. No. -
 Drawing No. Y-8-479
 Date Sept. 15, 1939
 Scale 1" = 1320' = 80 rods

STATE OF WEST VIRGINIA
 Department of Mines
 OIL & GAS DIVISION
 Charleston

WELL LOCATION MAP

File No. Mars 104

x Denotes location of well on U. S. Topographic Maps, scale 1 to 62,500, latitude and longitude lines being represented by border lines as shown.
 - Denotes one inch spaces on border line of original tracing.

WEST VIRGINIA DEPARTMENT OF MINES
OIL & GAS DIVISION
W E L L R E C O R D

Permit No. Mars-104
New Martinsville Quad.

Gas Well

Company The Manufacturers Light & Heat Co.
Address 800 Union Trust Bg., Pittsburgh, Pa.
Farm Timothy & Mary Yoho ACRES 500
Well No. 3583 ELEV. 1229
District Franklin - Marshall County
Surface B. C. Yoho, New Martinsville, W.Va.
Mineral The Mfgs. Light & Heat Co.
Commenced Nov. 2, 1939
Completed Jan. 4, 1940
Shot Pot shot
Open Flow 6/10ths Water in 2 inch
Volume 76,806 c.c.
Rock Pressure 63 lbs. 48 hrs.
Salt Water 1554

CASTING & TUBING

13	16-6	16-6
10	280-5	280-5
8-1/4	1144-1	1144-1
6-5/8	1932-4	1932-4
4	2971-2	2971-2

Packer - O.W.S. Anchor
Size - 4 x 6-5/8
Depth set - 2728-9

COAL AT:

418'	inches not given
732	" " "
822	48"
1340	inches not given
1507	inches not given

Clay	s	0	25	Slate	1485	1488	
Red Rock	red s	25	57	Gritty Lime	1488	1515	
Slate		57	67	Slate	1515	1534	
Red Rock	red s	67	100	Sand	1534	1598	G 1542-1548
Slate		100	250	Slate	1598	1636	W 1554-1570
Sand		250	262	Sand	1636	1680	
Slate		262	280	Slate	1680	1756	
Red rock	red s	280	292	Lime	1756	1766	
Slate		292	340	Slate	1766	1770	
Lime		340	360	Lime	1770	1794	
Sand		360	370	3rd Salt or Maxon	1794	1829	
Slate		370	463	Gritty Lime	1829	1844	
Lime		463	474	Sand	1844	1855	
Slate		474	572	Slate	1855	1874	
Red rock	red s	572	587	Lime	1874	1945	
Lime		587	593	Top Big Injun	1945	1978	Run SL 1910
Slate		593	615	Break (shale)	1978	1993	
Lime		615	650	Big Injun dark	1993	2205	
Red rock	red s	650	665	Slate & Shells	2205	2360	
Slate		665	670	Lime	2360	2370	
Lime		670	735	Sand	2370	2388	
Slate		735	743	Slate	2388	2397	1874
Lime		743	765	Lime	2397	2415	1229
Slate & Lime		765	785	Slate	2415	2475	1229
Gritty Lime		785	788	Lime	2475	2490	1229
Slate		788	800	Slate	2490	2618	
Lime		800	819	Lime	2618	2631	
Slate		819	822	Red rock red s	2631	2712	1229
✓ Pitts. Coal blk s		822	826	Lime	2712	2730	822
Slate		826	865	Slate	2730	2748	407
Red rock red s		865	875	Lime Shells	2748	2760	
Slate		875	890	Slate	2760	2788	
Lime		890	900	Lime Shell	2788	2791	
Slate		900	924	Slate	2791	2802	
Lime Shells		924	1000	Cave 1055-1065	2802	2815	
Red Rock red s		1000	1020	Line or Stray Sand	2802	2815	
Slate		1020	1105	Gas 1115-1120	2815	2839	Gas 2818-2826
Sand		1105	1146				6/10 W 2" opg.
Gritty Lime		1146	1196				S.L. 2822
✓ 1st Dunkard Sand		1196	1219	Lime	2839	2848	
Slate		1219	1260	Slate	2848	2883	
Gritty Lime		1260	1265	Gritty Lime	2883	2909	
Slate		1265	1295	Slate	2909	2912	
✓ Lime or 2nd Dunkard		1295	1342	Gritty Lime	2912	2931	
Slate		1342	1362	Slate	2931	2943	
Lime		1362	1371				
Slate		1371	1380	Total Depth		2943	
Sand		1380	1424				
Slate		1424	1447				
✓ 1st Salt Sand	s	1447	1485				

STATE OF WEST VIRGINIA
DEPARTMENT OF MINES
OIL AND GAS DIVISION

180

WELL RECORD

Permit No. Mars-104

~~Oil~~ Gas Well Gas
(Kind)

Company The Manufacturers Light & Heat
Address 800 Union Trust Bldg. Pittsburgh Pa.
Farm Timothy & Mary Yoho Acres 500
Location (waters) _____
Well No. 3583 (6) Elev. _____
District Franklin County Marshall
The surface of tract is owned in fee by B. C. Yoho
Address New Martinsville, WVa
Mineral rights are owned by The Mfrs L & H Co.
800 Union Trust Bldg. Address Pittsburgh, Pa.
Drilling commenced 11/2/39
Drilling completed 1/4/40
Date shot Not shot Depth of shot _____
Open Flow 6 /10ths Water in 2 Inch
/10ths Merc. in _____ Inch
Volume 76,806 Cu. Ft.
Rock Pressure 63 1/2 lbs. 48 hrs.
Oil None bbls., 1st 24 hrs.
Fresh water _____ feet
Salt water 155 1/2 feet

Casing and Tubing	Used in Drilling	Left in Well	Packers
Size			
16.			Kind of Packer <u>O.W.S</u>
13.	<u>16'-6"</u>	<u>16'-6"</u>	<u>None</u>
10.	<u>280'-5"</u>	<u>280'-5"</u>	<u>Anchor</u>
8 1/2.	<u>1144'-1"</u>	<u>1144'-1"</u>	Size of <u>4" x 6 7/8"</u>
6 5/8.	<u>1928'-4"</u>	<u>1928'-4"</u>	Depth set <u>2728'-9"</u>
5 3/16.			
3.			Perf. top _____
2 1/4"	<u>2971'-2"</u>	<u>2971'-2"</u>	Perf. bottom _____
Liners Used			Perf. top _____
			Perf. bottom _____

CASING CEMENTED _____ SIZE _____ No. FT. _____ Date _____
COAL WAS ENCOUNTERED AT 418 FEET Not given INCHES
732 FEET Not given INCHES 822 FEET 48 INCHES
1340 FEET Not given INCHES 1507 FEET Not given INCHES

Formation	Color	Hard or Soft	Top	Bottom	Oil Gas or Water	Depth Found	Remarks
Clay		Soft	0	25			
Red rock	Red	Soft	25	57			
Slate			57	67			
Red rock	Red	Soft	67	100			
Slate			100	250			
Sand			250	262			
Slate			262	286			
Red rock	Red	Soft	286	292			
Slate			292	310			
Lime			310	360			
Sand			360	370			
Slate			370	463			
Lime			463	474			
Slate			474	572			
Red rock	Red	Soft	572	587			
Lime			587	593			
Slate			593	615			
Lime			615	650			
Red rock	Red	Soft	650	665			
Slate			665	670			
Lime			670	733			
Slate			733	743			
Lime			743	765			
Slate & lime			765	785			
Gritty Lime			785	788			
Slate			788	800			
Lime			800	819			
Slate			819	822			
Pitts. Coal	Black	Soft	822	826			
Slate			826	865			
Red rock	Red	Soft	865	875			
Slate			875	890			
Lime			890	900			
Slate			900	921			
Lime shells			921	1000			
Red rock	Red	Soft	1000	1020			
Slate			1020	1105			
Sand			1105	1116	Gas	1115-1120	Cave 1055.1065
Gritty Lime			1116	1196			
1st Dunkard sand			1196	1219			
Slate			1219	1266			
Gritty Lime			1266	1267			
Slate			1267	1295			
Lime or 2nd Dunkard			1295	1312			
Slate			1312	1362			
Lime			1362	1371			
Slate			1371	1380			
Sand			1380	1421			
Slate		Soft	1421	1447			
1st salt sand			1447	1485			
Slate			1485	1488			
Gritty Lime			1488	1515			
Slate			1515	1531			
Sand			1531	1598	Gas water	1512-1518	10 bbls p
Slate			1598	1636		1537-1570	
Sand			1636	1680			
Slate			1680	1756			

Formation	Color	Hard or Soft	Top	Bottom	Oil, Gas or Water	Depth Found	Remarks
Thin Slate Lims			1756	1766			
Slate			1766	1770			
Lime			1770	1794			
3rd salt or maxon sand			1794	1829			
Gritty lime			1829	1844			
Sand			1844	1855			
Slate			1855	1874			
Lime			1874	1915			
Top Big Injun			1915	1978			
Break (shale)			1978	1993	Run steel line @ 1910'		
Big Injun	Dark		1993	2205			
Slate & shells			2205	2360			
Lime			2360	2370			
Sand			2370	2388			
Slate			2388	2397			
Lime			2397	2415			
Slate			2415	2475			
Lime			2475	2490			
Slate			2490	2618			
Lime			2618	2651			
Red rock	Red	Soft	2651	2712			
Lime			2712	2730			
Slate			2730	2748			
Lime shells			2748	2760			
Slate			2760	2788			
Lime shell			2788	2791			
Slate			2791	2802			
Lime or Stray sand			2802	2815			
Gordon sand			2815	2839	Gas	2818-2826	6/10 water in
Lime			2839	2848	Steel line @ 2822		2" opening.
Slate			2848	2883			
Gritty Lime			2883	2909			
Slate			2909	2912			
Gritty Lime			2912	2931			
Slate			2931	2943			
TOTAL DEPTH			2943				

Date March 22nd, 1940

APPROVED THE MANUFACTURERS LIGHT & HEAT CO. Owner

By Harry H. Fowler
Land Dept. (Title) Office Manager