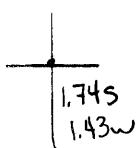


Latitude

08
14
30
"E.L.H."



Longitude

Topo Location

7.5' Loc. _____ 15' Loc. _____
 _____ (calc.) _____

Company EH Olmstead

Farm IF Harrison Hrs

15' Quad _____
(sec.)

7.5' Quad Powhatan Point

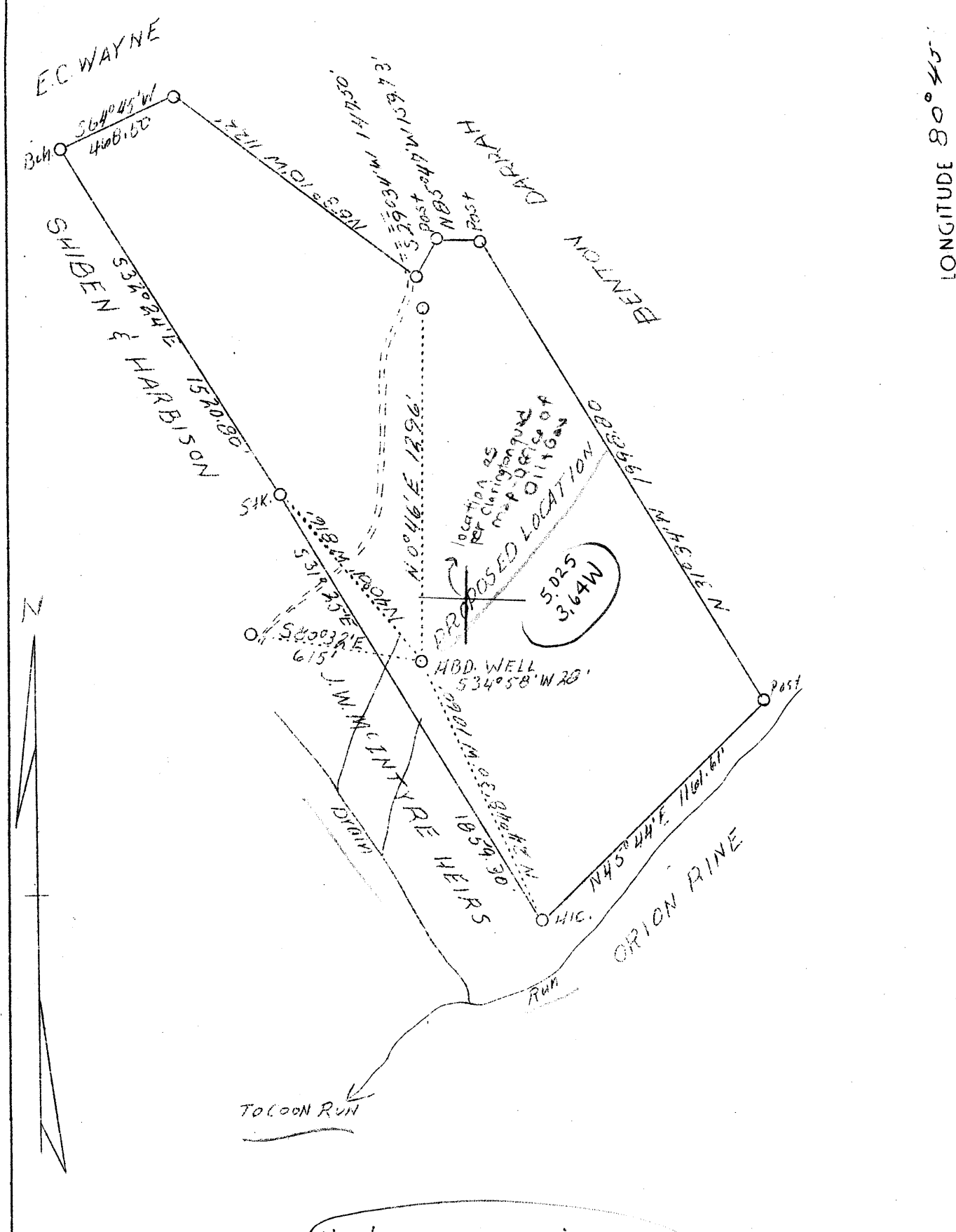
District Franklin

WELL LOCATION PLAT

County 051 **Permit** 102

LATITUDE 39° 50'

LONGITUDE 80° 45'



No topo location

Company E.H.Olmstead
 Address 121 Center St., Elm Grove, W.Va.
 Farm I.F.Harbison Heirs
 Tract 1
 Ac res 72
 Lease No. 1
 Well(Farm)No.1
 El.(S.L.) 1200.5
 Quadra ngle Clarington SE
 County Marshall
 District Franklin
 Eng. J.C.Boyd
 Eng.Reg. No. 917
 Date 5/8/39
 Scale 1" - 500'

STATE OF WEST VIRGINIA
 Department of Mines
 OIL AND GAS DIVISION
 Charleston

WELL LOCATION MAP

File No. Mars-102

x Denotes location of well on U.S. Topographic Maps, scale 1 to 62,500 latitude and longitude lines being represented by border lines as shown.
 - Denotes one inch spaces on border line of original tracing.

WEST VIRGINIA DEPARTMENT OF MINES
OIL & GAS DIVISION
W E L L R E C O R D

Permit No. Mars-102
Clarrington Quad.

Gas Well

CASING & BURING

Company	E. H. Olmstead	10	378
Address	121 Center St., Elm Grove, W. Va.	8-1/4	773
Farm	I. F. Harbison Mrs. ACRES 72	6-5/8	1173
Location	Coon Run	5-3/16	1475
Well No.	1 ELEV. 1200.5		
District	Franklin - Marshall County	Packer - Hook-wall	
Surface	K. F. Harbison Adm., McMechen, W. Va.	Size - 5-3/16x6-5/8	
Mineral	Wells Bottom Fuel Co., Uniontown, Pa.	Depth set - 1475	
Commenced	June 6, 1939		
Completed	Jan. 20, 1940	Coal at:	
Open Flow	56/10ths Water in 1 inch	210, 290, 413, 478,	
Volume	285,000 - 290,000 c.f. ^{290 MCF}	and 574	
Rock Pressure	250# 24 hrs. (subject to correction)	Pgh. Coal 767-770	
Fresh Water	65 and 90	Coal 1525-1530	
Salt Water	1518		

Mud-Rock - Surface	65	Water	Slate	995	1040	
Sand	65	75	Shell	1040	1043	
Rock red	75	85	Rock red	1043	1050	
Sand	85	90	Slate	1060	1075	
Rock red	90	95	Water	Rock pink	1075	1095
Slate	95	105	Mud blue	1095	1107	
Rock red	105	120	✓ Sand (Cow Run)	1107	1119	
Limy Slate	120	140	Slate blk	1119	1130	
Slate	140	150	✓ Sand (Dunkard)	1180	1220	
Rock red	150	165	Sand (Limy)	1220	1235	
Slate	165	175	Lime hard	1235	1255	
Rock red	175	180	✓ Gas Sand	1255	1270	
Slate	180	210	Slate	1270	1295	
Coal blossom	210	212	Slate (Limy)	1295	1310	
Slate	212	240	Slate	1310	1350	
Rock red	240	250	Slate (Limy)	1350	1420	
Slate	250	270	Slate (Black)	1420	1470	
Rock red	270	280	Salt Sand	1470	1525	Gas 1508
Sandy Slate	280	290				W 1518
✓ Coal	290	293	✓ Coal	1525	1530	
Muddy Slate	293	378	Slate	1530	1570	
Lime hard	378	385	✓ Third Salt	1570	1638	
Lime & Slate	385	413	Slate	1638	1764	
✓ Coal	413	416	✓ Harton Sand	1764	1776	Sh. Gas
Slate	416	475	Slate	1776	1808	
Sand hard	475	478	✓ Big Lime	1808		M.D. 1.1.1
✓ Coal	478	481				
Sand hard	481	486				
Slate	486	504				
✓ Coal	574	577				
Lime hard	577	600				
Slate	600	606				
Lime hard	606	620				
Slate	620	630				
Lime	630	642				
Slate	642	650				
Lime hard	650	701				
Slate	701	703				
✓ Coal	703	709				
Lime hard	709	760				
Sand	760	767				
✓ Coal (Pgh)	767	770				
Lime hard	770	800	Gas show			
Lime "	800	820				
Sand	820	840				
Lime red	840	900				
Rock red	900	920				
Sand	920	925				
Rock red	925	950				
Slate	950	975				
Rock pink	975	995				

We have specified the color and condition of formations only when they varied from the normal.

1808
1201
607