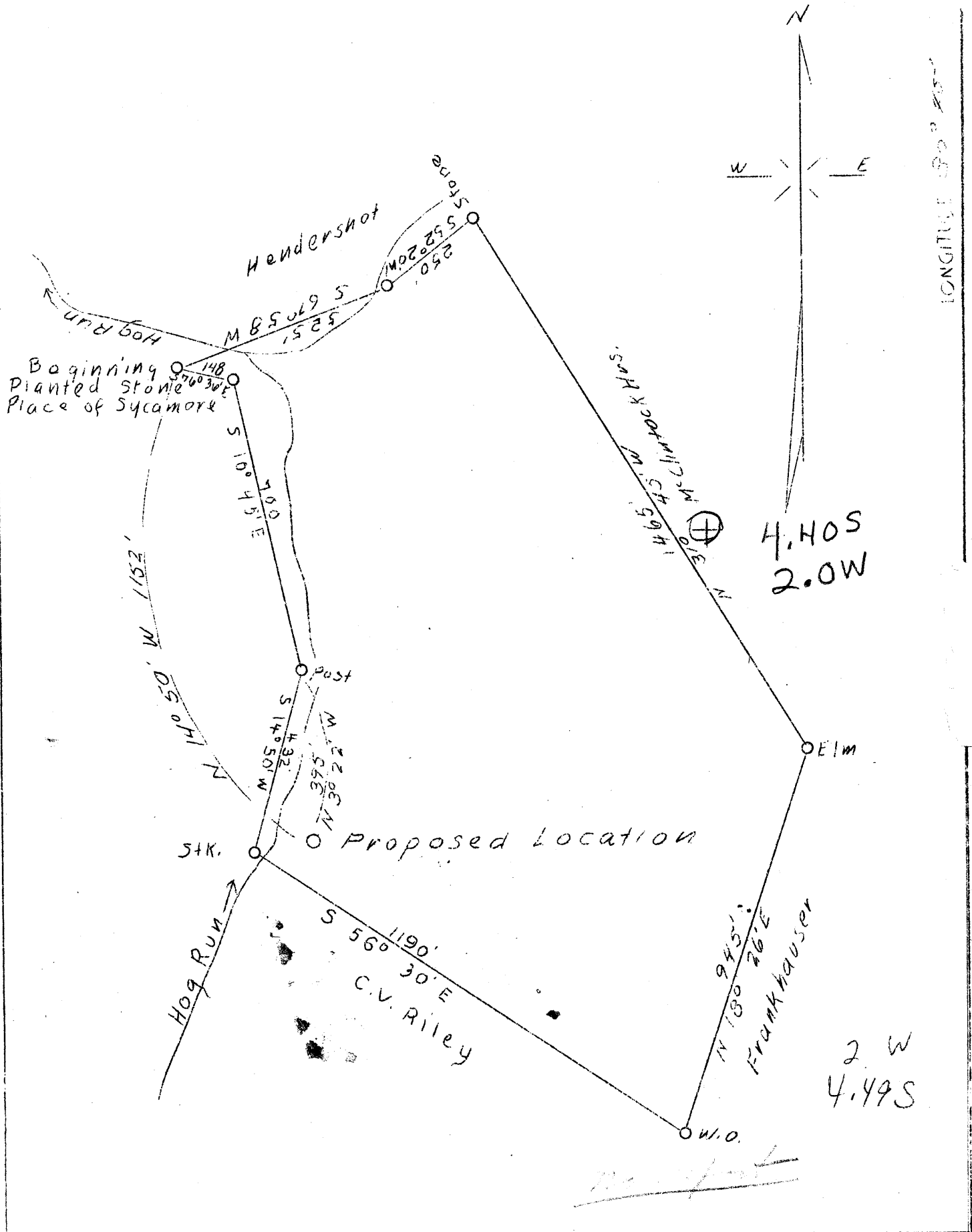


LATITUDE 39°55'

LONGITUDE 80° 45'



Company J. C. Ruckman  
 Address 712 Hawley Bldg., Wheeling, W. Va.  
 Farm Denny Hrs.  
 Acres 38.9  
 Well (Farm) No. One  
 Elevation (SP, 699.70  
 Quadrangle Clarington  
 County Marshall  
 District Clay  
 Engineer Gordon W. Sammons  
 Eng. Reg. No. 509  
 Date Nov. 1, 1938  
 Scale 1" - 300'

STATE OF WEST VIRGINIA  
 Department of Mines  
 OIL & GAS DIVISION  
 Charleston

WELL LOCATION MAP  
 File No. Mars-101

x Denotes location of well on U. S. Topographic Maps, scale 1 to 62,500, latitude and longitude lines being represented by border lines as shown.

- Denotes one inch spaces on border line of original tracing.