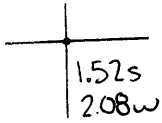


Latitude



Longitude

Topo Location

7.5' Loc. _____ 15' Loc. _____
 _____ (calc.) _____

Company J C Ruckman

Farm Mike Meszmer #1

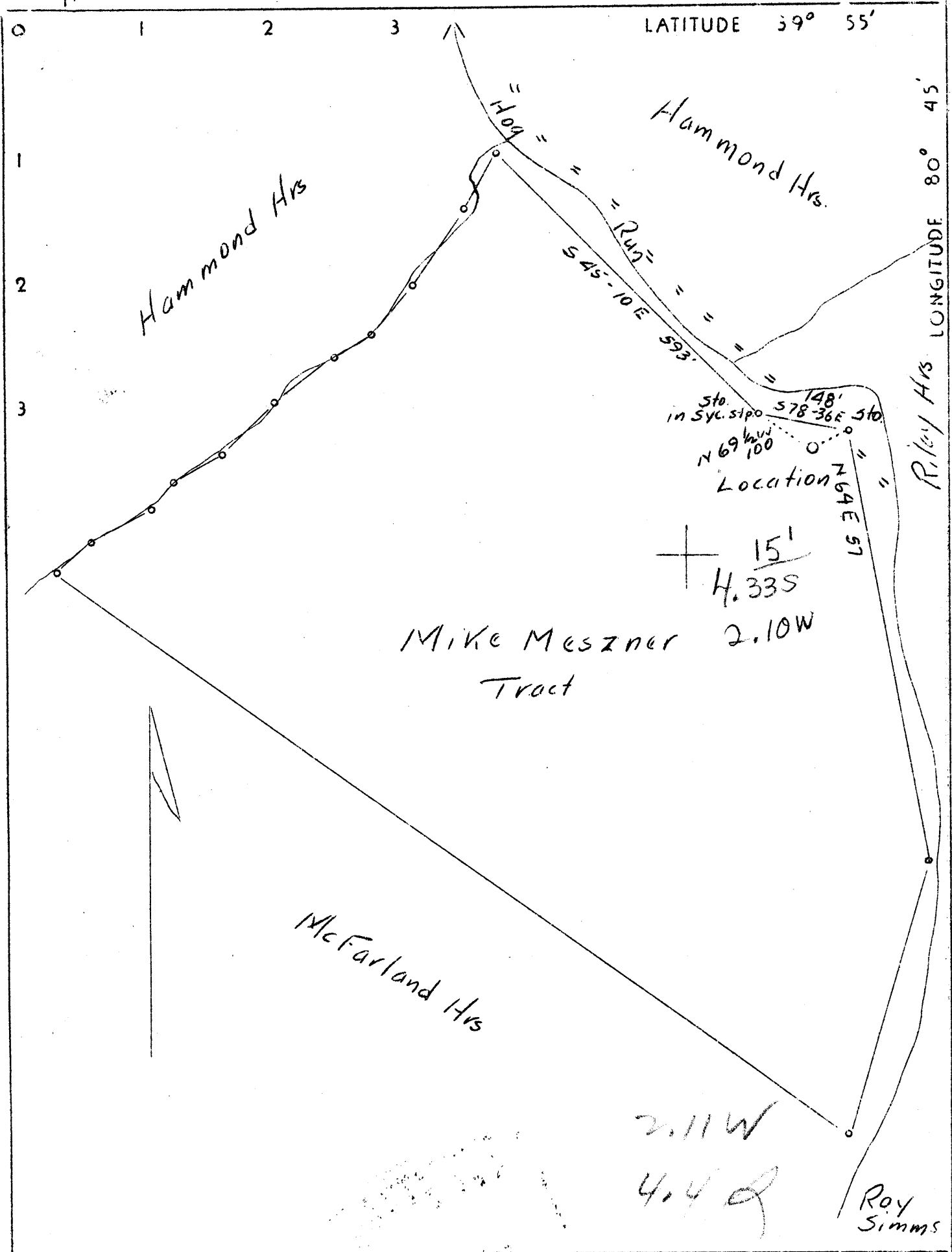
15' Quad _____
(sec.)

7.5' Quad Powhatan Point WV

District Franklin

WELL LOCATION PLAT

County OSI **Permit** 86



Mike Meszner 2.10W
Tract

McFarland Hrs

2.11W
4.4

Roy Simms

Company	J.C. Ruckman
Address	600, 1st Nat. Bank Bldg.
Farm	Mike Meszner Bellaire, Ohio
Tract	Acres 24.7 Lease No.
Well (Farm)	No. 1 Serial No.
Elevation (Spirit Level)	672
Quadrangle	Clarrington
County	Marshall District Franklin
Engineer	Gordon W. Sammons
Engineer's Registration No.	509
File No.	Drawing No.
Date	Aug. 22, 1937 Scale 1"=200'

STATE OF WEST VIRGINIA
Department of Mines
OIL AND GAS DIVISION
CHARLESTON

WELL LOCATION MAP
File No. MARS-86

+ Denotes location of well on United States Topographic Maps, scale 1 to 62,500, latitude and longitude lines being represented by border lines as shown.

— Denotes one inch spaces on border line of original tracing.

WEST VIRGINIA DEPARTMENT OF MINES

OIL AND GAS DIVISION

WELL RECORD

Permit No. Mars. 86

Gas Well

Clarrington Quad.

CASING & TUBING

Company	J.C. Ruckman	10	9	9
Address	712 Hawley Bldg., Wheeling, W. Va.	8 $\frac{1}{4}$	231'7"	231'7"
Farm	Mike and Etel Meszner	Acres 24.7 6 5/8	436	436
Location	Hog Run			
Well No.	One	Elev. 672		
District	Franklin	County Marshall		
Surface	Mike and Etel Meszner, Captina, W. Va.			
Mineral	Same			
Drilling	Commenced Feb. 8, 1938			
	Completed March 1, 1938			
Volume	Not yet determined			
Rock Press.	150# 1 to 2 hrs.			

Formation		Color	Hor	TOP	Base	Result	Formation		Color	Hor	TOP	Base	Result
Surface				0	9								
Lime	Grey	S		9	49	Water							
Shale	Light	M		49	54	58'							
Lime	Grey	H		54	59								
Shale	Dark	M		59	61								
✓ Coal	Black	M		61	64								
Shale	Light	M		64	66								
Lime	Grey	H		66	73								
Shale	Blue	M		73	79								
Lime	Grey	H		79	94								
Shale	Light	M		94	117								
✓ Coal	Black	M		117	118								
Shale	Light	M		118	120								
Lime	Grey	H		120	128								
Shale	Light	M		128	140								
x Coal	Black	M		140	145								
Fire Clay				145	151								
Shale	Light	M		151	169								
Sand Rock				169	177								
Shale	Light	M		177	178								
Lime	Grey	M		178	185								
Shale	Light	M		185	217								
Shale	Red	M		217	220								
Shale	Light	M		220	225								
Shale	Red	M		225	233								
Shale	Light	M		233	249								
Shale	Red	M		249	283								
Shale-Sandy	Light			283	298								
Sand Rock				298	312	Water							
Shale	Light	M		312	316	321'							
Shale	Red	M		316	322								
Shale	Sandy			322	339								
Shale	Red	M		339	346								
Shale	Light	M		346	348								
Shale	Red	M		348	377								
Lime				377	382								
Shale	Light			382	389								
Shale	Sandy			389	408	Water							
Shale	Red			408	419	418'							
Shale	Light			419	425								
Shale	Light			425	433								
Shale	Red			433	440	Gas							
Shale-Sandy	Light			440	448	449							
Shale	Red	M		448	453								
Shale-sandy				453	467								
Slate	Black			467	471	Gas							
						462							