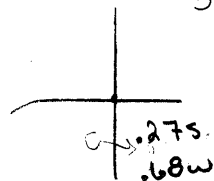


LATITUDE

39 50



53 08

LONGITUDE

LONGITUDE

7'5 OGIS topo location

7.5' loc	<u>0.36S</u>	15' loc	<u>0.36S</u>
	<u>0.72W</u>	(calc.)	<u>0.72W</u>

Company _____

Farm _____

SECTION MAP _____

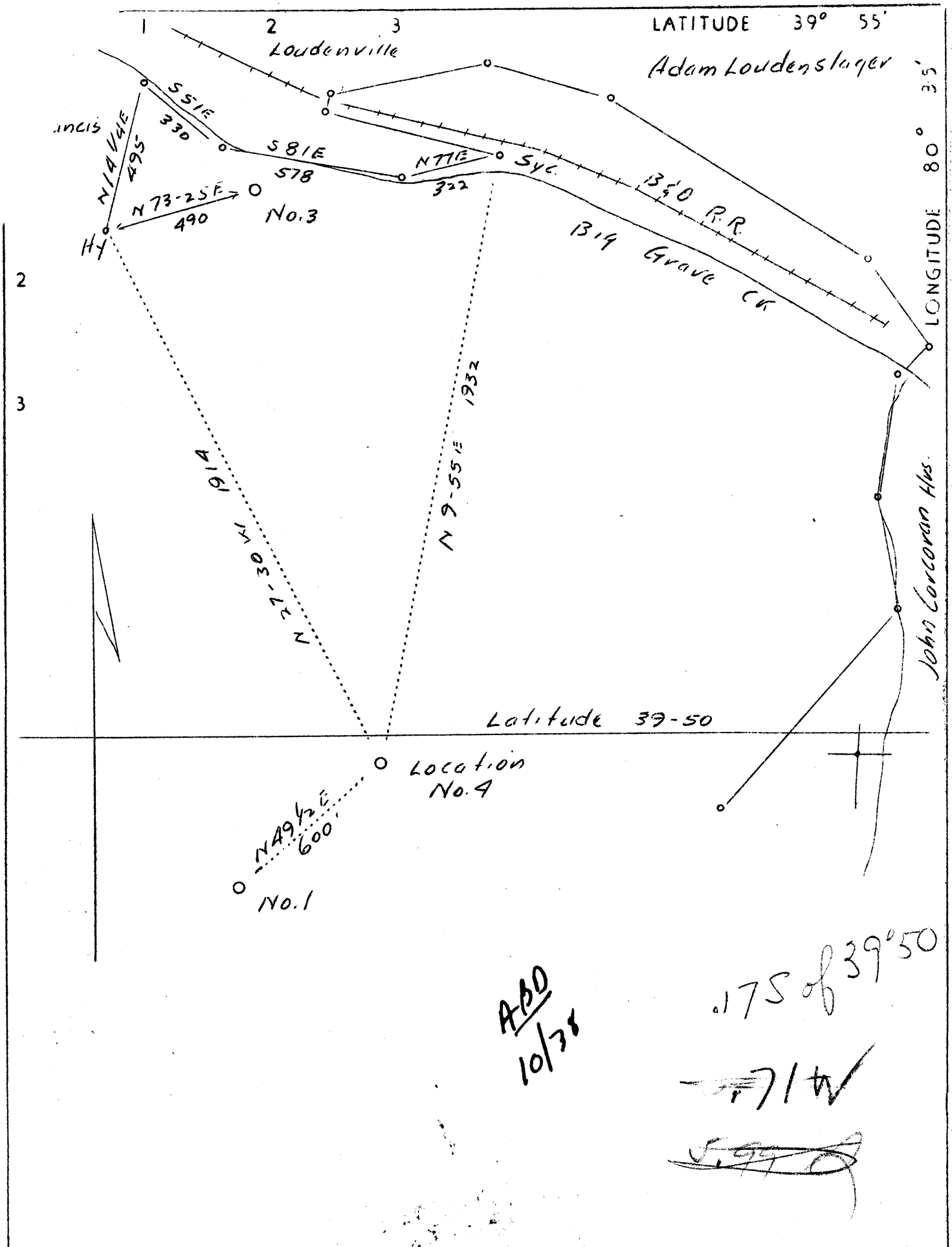
Quad Cameron # 15 5C

County _____

District Cameron

WELL LOCATION MAP

File No. Marshall 85



Company	F. J. Watson
Address	Cameron, W. Va.
Farm	Jos. Loudenslager Hrs.
Tract	Acres 194.48 Lease No.
Well (Farm) No.	4 Serial No.
Elevation (Spirit Level)	1367
Quadrangle	Cameron
Engineer	Gordon W. Sammons
Engineer's Registration No.	509
County	Marshall District Cameron
File No.	Drawing No.
Date	Aug. 13, 1937 Scale 1"=400'

STATE OF WEST VIRGINIA
 Department of Mines
 OIL AND GAS DIVISION
 CHARLESTON

WELL LOCATION MAP
 File No. MARS-85

+ Denotes location of well on United States Topographic Maps, scale 1 to 62,500, latitude and longitude lines being represented by border lines as shown.

- Denotes one inch spaces on border line of original tracing.

WEST VIRGINIA DEPARTMENT OF MINES

OIL AND GAS DIVISION

WELL RECORD

Permit No. Mars-85

Gas Well

Quad Not given

CASING & TUBING

Company	T.J. Watson	10	336	336
Address	Cameron, W.Va.	8 1/2	1564	1564
Farm	Londenslager Heirs Acres 200	6 5/8	2158	2158
Location	Indian Run			
Well No.	4 Elev. 1367			
District	Cameron County Marshall			
Surface	Londenslager Heirs, Cameron, W.Va.			
Mineral	Londenslager Heirs, Cameron, W.Va.			
Drilling	Commenced Sept. 20, 1937			
	Completed Nov. 2, 1937			
Volume	115,000 Cu. Ft.			
Rock Press.	150# 3 hrs.			

Formation	Color	Hor	TOP	Base	Result	Formation	Color	Hor	TOP	Base	Result
Slate	Dark	S	200	240	Some Water						
Slate	Gray	S	240	300							
Lime	Dark	H	300	348							
Red Rock Lime & Slate	Dark	S	348	506							
Sand	Dark	H	506	520							
Red Rock	Dark	S	520	670							
Coal	Dark	S	670	673							
Slate & Lime	Dark	S&H	673	741							
Coal	Dark	S	741	743							
Slate & Lime	Dark	H&S	743	990							
Coal	Dark	S	990	995							
Lime & Slate	L & D	S&H	995	1080							
Coal	Dark	S	1080	1085							
Slate Lime & Shale	D&L	H&S	1085	1140							
Lime Shale & Red Rock	L&Red	H&S	1140	1474							
L. Dunk. Sand	Light	H	1474	1486							
Red Rock & Lime & Shale	Red, Light & Dark	S, H, & S.	1486	1568							
B. Dunkard	Light	H	1568	1610							
Slate, Shale & Lime	Dr. & L.	S&H	1610	1745							
Gas Sand	Light	H	1745	1795							
Slate & Lime	D&L	S&H	1795	1950							
1st Salt Sand	Light	H	1950	1995							
Slate & Lime	D&L	S&H	1995	2085							
2nd Salt Sand	Light	H	2085	2135							
Big Lime	Light	H	2135	2200							
Big Injun Sand	Gray	H	2200	2446							
Slate & Lime	D&Gray	S&H	2446	2895							
Pink Rock	Pink	S	2895	2955							
Slate & Shells	D& Gray	S	2955	3057							
Gordon Stray	Gray	H	3057	3074							
Gordon Sand	Gray	H	3074	3081							
Slate & Lime	D&L.	S&H	3081	3202							
5th Sand	Gray	S	3202	3205	Gas						
Slate	Dark	S	3205	3235							

Handwritten calculations and notes:

2135
100

2235
1367

868

2235
1085

1150

1367
1085

2452

2135
1367

768