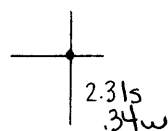


39°47'30"

Latitude

Longitude

80°35'00"



Topo Location

7.5' Loc. _____ 15' Loc. _____
 _____ (calc.) _____

Company Carnegie Nat Gas

Farm CF Connelly #1

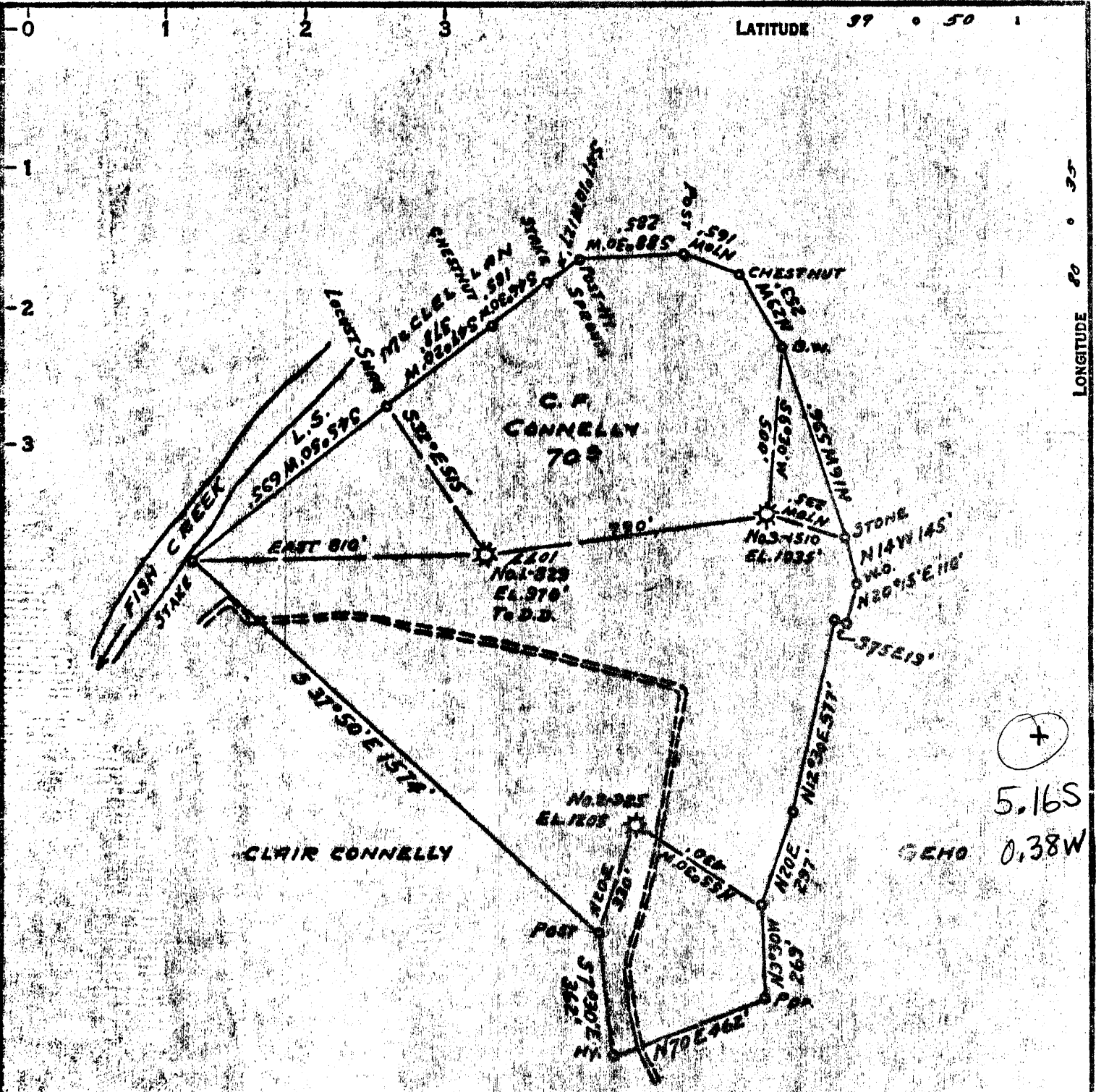
15' Quad _____
(sec.)

7.5' Quad Cameron

District Liberty

WELL LOCATION PLAT

County 051 Permit 84



COAL OWNED BY _____
 NEW LOCATION
 DRILL DEEPER
 ABANDONMENT - 9-22-71

COMPANY Columbia Gas Trans., Corp.
 ADDRESS 800 UNION TRUST BLDG. PCH. PA. 15210
 FARM C.F. CONNELLY
 TRACT _____ ACRES 70 LEASE No. 28902
 WELL (FARM) No. 1 SERIAL No. 4401
 ELEVATION (SPIRIT LEVEL) 970'
 QUADRANGLE CAMERON SC
 COUNTY MARSHALL DISTRICT LIBERTY
 ENGINEER O.T. BRITTON (C.N. GAS CO.)
 ENGINEER'S REGISTRATION No. _____
 FILE No. _____ DRAWING No. Y-15-695
 DATE 31 JAN. 1958 SCALE 1" = 400'

STATE OF WEST VIRGINIA
 DEPARTMENT OF MINES
 OIL AND GAS DIVISION
 CHARLESTON

WELL LOCATION MAP

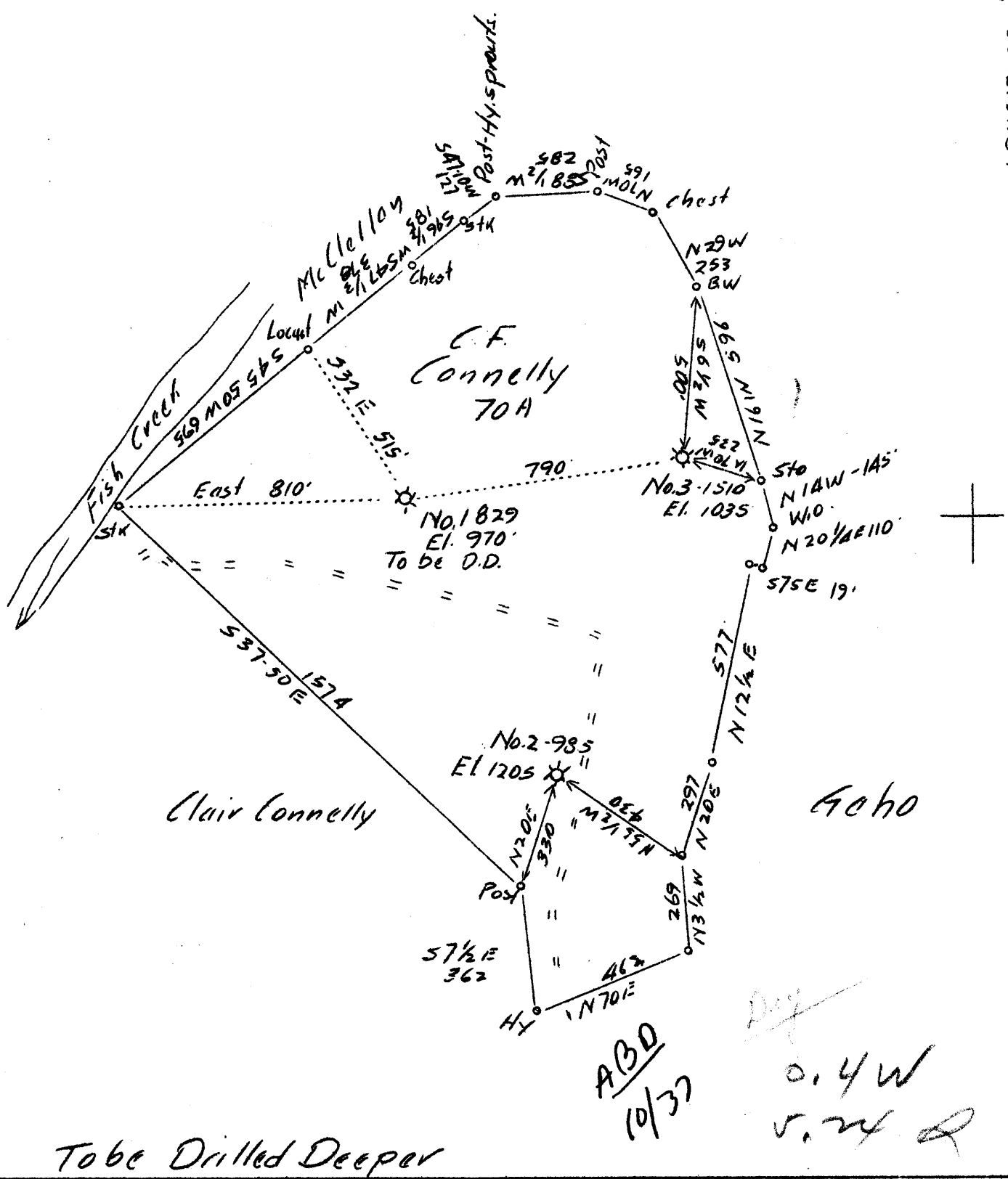
FILE No. MARS-84 PARTIAL
PLUG

+ DENOTES LOCATION OF WELL ON UNITED STATES TOPOGRAPHIC MAPS. SCALE 1 TO 62,500. LATITUDE AND LONGITUDE LINES BEING REPRESENTED BY BORDER LINES AS SHOWN.

-- DENOTES ONE INCH SPACES ON BORDER LINE OF ORIGINAL TRACING.

0 1 2 3 LATITUDE 39° 50'

LONGITUDE 80° 35'



Company	Carnegie Natural Gas Co.
Address	1014 Frick Bldg., Pittsburgh, Pa.
Farm	C.F. Connelly
Tract	1 Acres 70 Lease No. E-9806-48
Well (Farm) No.	1 Serial No. 829
Elevation (Spirit Level)	970
Quadrangle	Cameron
County	Marshall District Liberty
Engineer	D.T. Britton
Engineer's Registration No.	
File No.	Drawing No.
Date	7-13-37 Scale 1"-400'

STATE OF WEST VIRGINIA
 Department of Mines
 OIL AND GAS DIVISION
 CHARLESTON

WELL LOCATION MAP

File No. MARS-84

+ Denotes location of well on United States Topographic Maps, scale 1 to 62,500, latitude and longitude lines being represented by border lines as shown.

— Denotes one inch spaces on border line of original tracing.

C. F. CONNELLY NO. 1 (829) WELL.

Liberty District, Marshall County, W. Va.

By Carnegie Natural Gas Co.

Map, Cameron SE.

On 70 acres.

Drilling commenced June 17, 1918; completed, July 19, 1918.

Drilled deeper June 22, 1919.

Drilled deeper Aug. 20, 1937.

Open flow, 594,000 cu. ft.; 825# R. P. (5th Sand).

Plugged to 2756'.

Record from Wilson Sept. 27, 1939.

MARS-84-D

	Top.	Bottom.
Mapletown (Sewickley) Coal	557	562
Pittsburgh Coal	665	671
Little Dunkard Sand	1086	1114
Big Dunkard Sand	1143	1254
1st Low Sand	1425	1445
1st Salt Sand	1613	1665
Marion Sand (show gas, 1719')	1702	1800
Big Injun Sand (gas, 1815'; oil, 1817-1822')	1800
Gordon Sand (show gas, 2662')	2660	2675
4th Sand	2700	2712
5th Sand (gas, 2722-24'; 594 M. cu. ft.; 825# R. P.)	2717	2725
Total depth		3091
Plugged to		2756

1822
934