

LATITUDE

39 47 30

80 32 30

LONGITUDE

OGIS
75

7'5 OGIS topo location

7.5' loc 1.98S
1.39W

15' loc 4.86S
(calc.) 3.59W

Company _____

Farm _____

LOCATION MAP

Quad Cameron + 15' SE

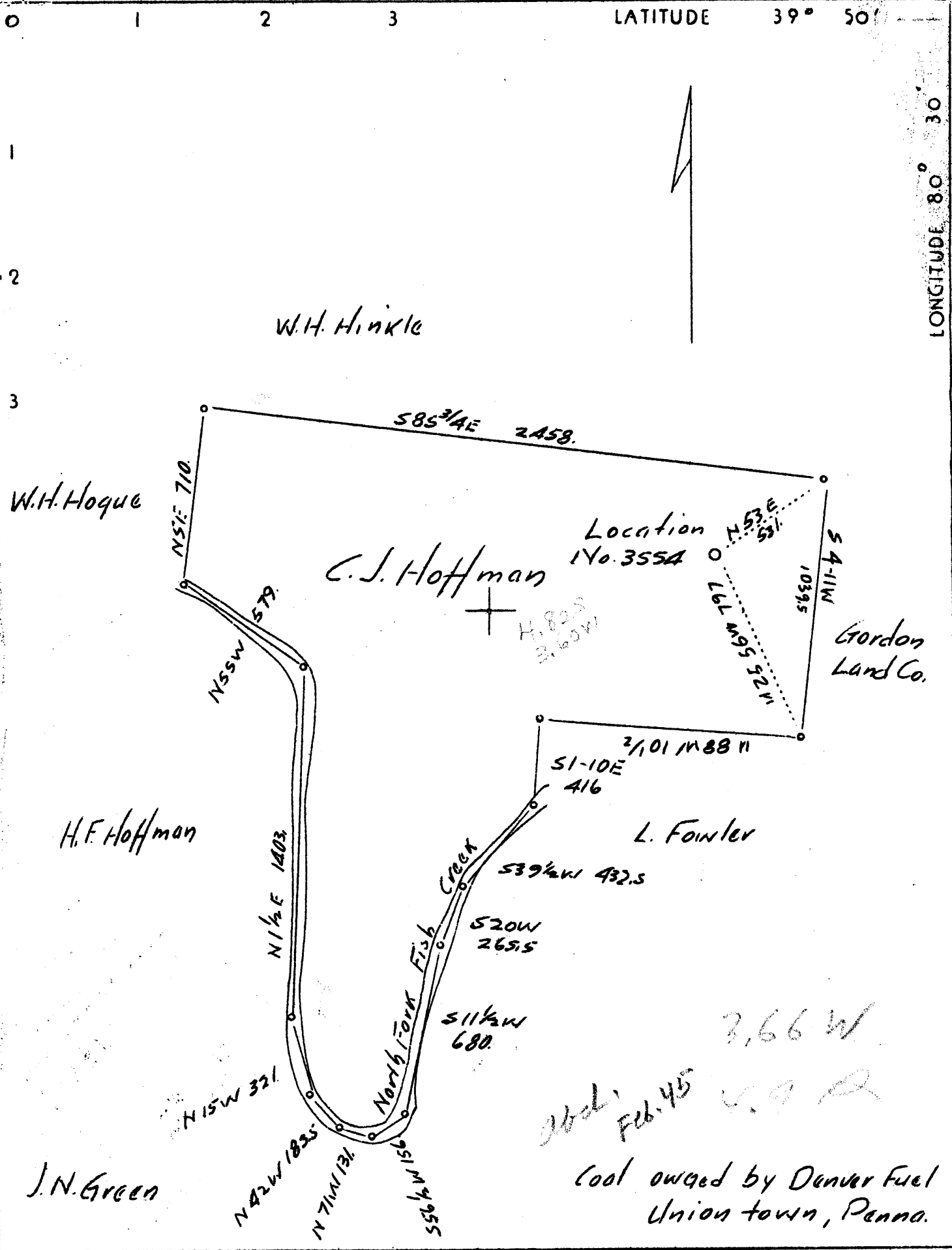
County _____

District Liberty

WELL LOCATION MAP

File No. Marshall 83

M



Company	The Manufacturers Light & Heat Co.
Address	800 Union Tr. Bldg. Pitts. Pa.
Farm	C.J. & J.L. Hoffman
Tract	Acres 82 Lease No. 2872
Well (Farm) No.	2 Serial No. 3554
Elevation (Spirit Level)	1275.39
Quadrangle	Cameron
County	Marshall District Liberty
Engineer	Donald K. Bell
Engineer's Registration No.	
File No.	Drawing No. Y-7-701
Date	6-29-37 Scale 1"-500'

STATE OF WEST VIRGINIA
 Department of Mines
 OIL AND GAS DIVISION
 CHARLESTON

WELL LOCATION MAP
 File No. MARS-83

+ Denotes location of well on United States Topographic Maps, scale 1 to 62,500, latitude and longitude lines being represented by border lines as shown.

— Denotes one inch spaces on border line of original tracing.

WEST VIRGINIA DEPARTMENT OF MINES

OIL AND GAS DIVISION

WELL RECORD

Permit No. Mars-83

Gas Well

Cameron Quad.

CASING & TUBING

Company	Manufacturers Light & Heat	13	Cond.	16	16
Address	800 Union Trust Bldg. Pittsburgh, Pa.	10		294'10"	294'10"
Farm	C.J. & J.L. Hoffman Acres 82	8 1/4		1559'11"	1559'11"
Location	Not given	6	5/8	2202'10"	2202'10"
Well No.	3554				
District	Liberty	Elev. 1275			
Surface	Sadie M. Spragg, 725 Broad St., Washington, Pa.				PACKER
Mineral	The Manf. Light & Heat Co. Pittsburgh, Pa.				None
Drilling	Commenced 8/23/37				
	Completed 10/22/37				
Date Shot	Not shot				
Volume	44,344 Cu.Ft.				
Rock Press.	275# 48 hrs.				

Formation	Color	Top	Base	Result	Formation	Color	Top	Base	Result
Clay	Yellow	0	14		Salt Sand	White	2025	2055	
Slate&Lime	White	14	648		Slate	Dark	2055	2077	
Lime	"	648	748		Sand	White	2077	2092	
Waynesburg Coal	Black	748	751		Slate	Gray	2092	2097	
Slate	Dark	751	830		Lime	White	2097	2100	
Lime(Gritty)	White	830	947		Red Rock	Red	2100	2110	
Mapletown Coal	Black	947	952		Lime Shells	White	2110	2115	
Slate	Dark	952	970		Slate	Gray	2115	2125	
Lime	White	970	1037		Lime	White	2125	2140	
Pitts. Coal	Black	1037	1044		Slate	Dark	2140	2147	
Lime	White	1044	1065		L. Lime	White	2147	2159	
Slate	Dark	1065	1089		Pencil Cave	Dark	2159	2163	
Red Rock	Red	1089	1099		B. Lime	White	2163	2220	
Slate	Dark	1099	1104		Big Injun	White	2220	2470	
Lime	White	1104	1130		Slate & Shells	Dark	2470	2500	
Slate&Shells	White	1130	1148		Lime	White	2500	2520	
Lime	White	1148	1180		Slate	Dark	2520	2540	
Red Rock	Red	1180	1186		Slate & Shells	Dark	2540	2575	
Slate	White	1186	1205		Sand	White	2575	2585	
Red Rock	Red	1205	1212		Slate	Dark	2585	2600	
Lime	White	1212	1222		Lime	White	2600	2625	
Slate	White	1222	1240		Slate	Gray	2625	2665	
Lime	White	1240	1260		Lime	White	2665	2700	
Slate	White	1260	1270		Slate	Gray	2700	2725	
Lime	White	1270	1295		Shells	Gray	2725	2750	
Slate	Dark	1295	1320		Slate	Dark	2750	2812	
Red Rock	Red	1320	1340		Sand	White	2812	2828	
Lime	White	1340	1387		Slate	Dark	2828	2840	
Slate	Gray	1387	1416		Slate&Shells	Dark	2840	2880	
Red Rock	Red	1416	1426		Slate	Dark	2880	2900	
Lime	White	1426	1450		Lime Shells	Dark	2900	2920	
Slate	Dark	1450	1460		Pink Rock	Pink	2920	2960	
Lime	White	1460	1475		Slate&Shells	Gray	2960	3005	
Slate	Dark	1475	1535		Fifty Foot	White	3005	3018	
B. Dunkard	Gray	1535	1585		Slate & Shells	White	3018	3070	
Slate	Dark	1585	1595		Gordon Sand	White	3070	3093	
Lime	White	1595	1605		Slate	Dark	3093	3132	
Slate	Dark	1605	1640		4th Sand	White	3132	3145	Gas
Lime	White	1640	1655		Slate	Dark	3145	3191	3133
Slate	Dark	1655	1695		5th Sand	White	3191	3197	74/10
Lime	White	1695	1701		Slate	Dark	3217	3238	W. 3/8"
Slate	Dark	1701	1744		TOTAL DEPTH			3238	
Lime	White	1744	1760						Gas
Slate	Dark	1760	1780						3193
Lime	White	1780	1790						Total
Marion Sand	White	1790	1830						test
Slate	Dark	1830	1865						32/10
Salt Sand	White	1865	1893						W. 1"
Slate	Gray	1893	1900						opng.
Lime	White	1900	1905						
Salt Sand	White	1905	1975						
Slate	Dark	1975	1990						
Lime Shells	White	1990	2025						

Handwritten calculations and notes:

2163
 2110
 2273
 1275
 998

2163
 1275
 -898