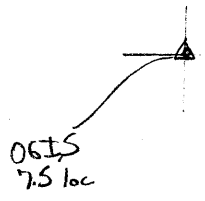


LATITUDE

39° 47' 30"

55° 08'

LONGITUDE



7'5 OGIS topo location

7.5' loc	<u>2.25S</u>	15' loc	<u>5.125</u>
	<u>0.20 W</u>	(calc.)	<u>0.20 W</u>

Company Manus. Light + Heat

Farm C. F. Connelly

Quad Cameron 7.5' Cameron 50

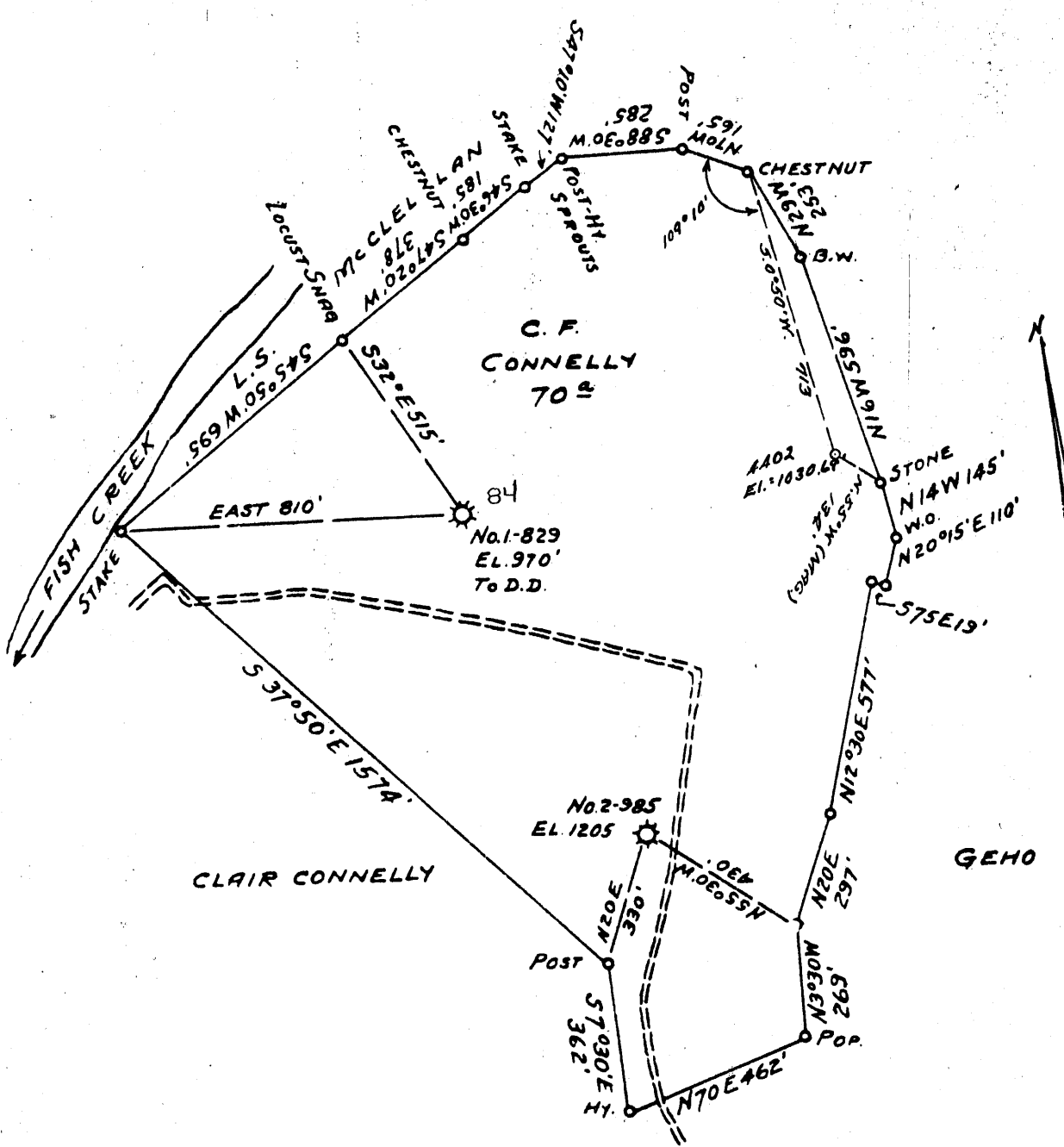
County Marshall

District Liberty

WELL LOCATION MAP

File No. 051-73

Chop



COAL OWNED BY _____
 PART. PLUG
 NEW LOCATION...
 DRILL DEEPER...
 ABANDONMENT... *Willed 1-21-71*

0-26-29

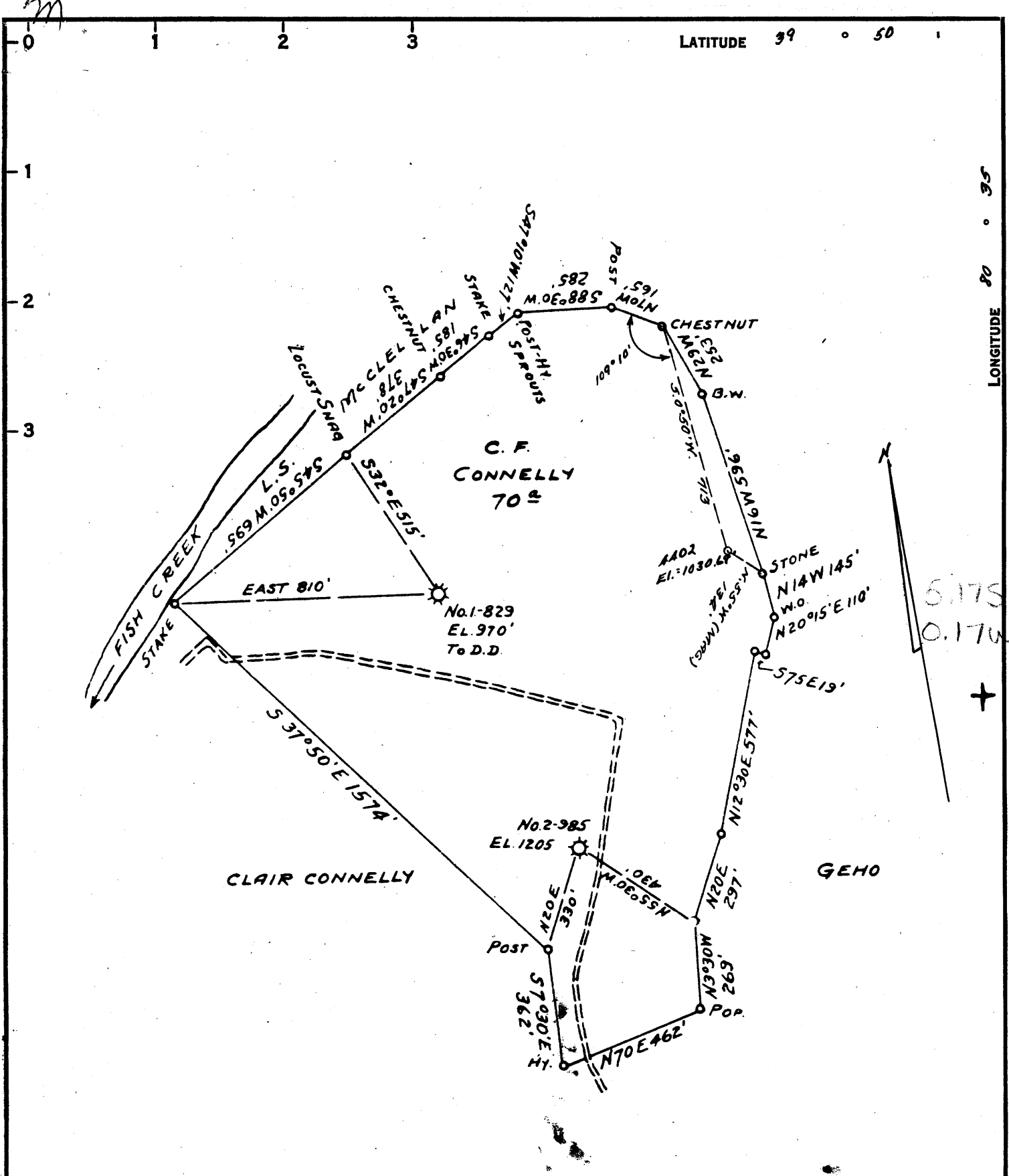
COMPANY THE MANUFACTURERS LIGHT & HEAT CO
 ADDRESS 800 UNION TRUST BLDG. PGH. PA.
 FARM C.F. CONNELLY
 TRACT _____ ACRES 70 LEASE No. 38903
 WELL (FARM) No. 3 SERIAL No. 4402
 ELEVATION (SPIRIT LEVEL) 1039.69'
 QUADRANGLE CAMERON SC
 COUNTY MARSHALL DISTRICT LIBERTY
 ENGINEER Robert M. Heill (J.E.)
 ENGINEER'S REGISTRATION No. 361-E
 FILE No. _____ DRAWING No. Y-15-919
 DATE 19 MAR. 59 SCALE 1" = 400'

STATE OF WEST VIRGINIA
 DEPARTMENT OF MINES
 OIL AND GAS DIVISION
 CHARLESTON

WELL LOCATION MAP

FILE No. MACS-73-Partial Plug-P
 (Storage)

+ DENOTES LOCATION OF WELL ON UNITED STATES TOPOGRAPHIC MAPS, SCALE 1 TO 62,500, LATITUDE AND LONGITUDE LINES BEING REPRESENTED BY BORDER LINES AS SHOWN.
 - DENOTES ONE INCH SPACES ON BORDER LINE OF ORIGINAL TRACING.



5.175
0.17W
+

COAL OWNED BY _____
PART. PLUG

NEW LOCATION.....

DRILL DEEPER.....

ABANDONMENT.....

0-25-29

COMPANY THE MANUFACTURERS LIGHT & HEAT CO

ADDRESS 800 UNION TRUST BLDG. PSH. PA.

FARM C.F. CONNELLY

TRACT _____ ACRES 70 LEASE No. 28902

WELL (FARM) No. 3 SERIAL No. 4402

ELEVATION (SPIRIT LEVEL) 1039.69'

QUADRANGLE CAMERON

COUNTY MARSHALL DISTRICT LIBERTY

ENGINEER Robert M. Heil (J.E.)

ENGINEER'S REGISTRATION No. 361-E

FILE No. _____ DRAWING No. Y-15-919

DATE 19 MAR. 59 SCALE 1" = 400'

STATE OF WEST VIRGINIA
 DEPARTMENT OF MINES
 OIL AND GAS DIVISION
 CHARLESTON

WELL LOCATION MAP

FILE No. Mars-73-Partial Plug
(Storage)

+ DENOTES LOCATION OF WELL ON UNITED STATES TOPOGRAPHIC MAPS. SCALE 1 TO 62,500. LATITUDE AND LONGITUDE LINES BEING REPRESENTED BY BORDER LINES AS SHOWN.

- DENOTES ONE INCH SPACES ON BORDER LINE OF ORIGINAL TRACING.

OWWO-9-0 25
 1959(?) storage

WEST VIRGINIA DEPARTMENT OF MINES

OIL AND GAS DIVISION

W E L L R E C O R D

Permit No. Mars - 73

Gas Well

Company - Narnegie Natl. Gas Co.
 Address - Pittsburgh, Pa.
 Farm - C. F. Connelly. Acres- 70
 Location - Fish Creek
 Well No. - 3/1510 Elev. 1035'
 District - Liberty. County- Marshall
 Surface & Mineral - C. F. Conneally
 Drilling - Completed- 1/20/37
 Commenced- 12/9/36
 Date Shot -
 Open Flow - 260,000 cu. ft.
 Rock Press.- 108 lbs. 45 min.
 Oil -
 Fresh Water-
 Salt Water -

CASING & TUBING

10	225
8 1/4	1332
6-5/8	2073
3	2961

Coal was encountered at 434'; 635'
740feet

Formation Color 3' TOP Bottom Result					Formation Color 3' TOP Bottom Result				
Clay	Dark	S	0	11	Slate	Dark	S	1266	1281
Sand	Light	H	11	21	Sand	Whi.	H	1281	1310
Slate	Dark	S	21	50	Lime	Whi.	H	1310	1330
Lime	Light	H	50	70	Slate & Shells	Drk	S	1330	1375
Slate	Dark	S	70	125	Lime	Dark	H	1375	1382
Lime	Light	H	125	135	Slate	Black	S	1382	1432
Slate	Dark	S	135	215	Lime	White	H	1432	1456
Lime (Gritty)	Light	H	215	225	Slate	Dark	S	1456	1465
Red Rock	Red	S	225	235	Lime	Light	H	1465	1487
Slate	Dark	S	235	300	1st Salt S.	Whi.	S	1487	1520
Lime	Light	H	300	315	Slate	Blk	S	1520	1540
Slate	Light	S	315	375	2nd Salt S.	Light	H	1540	1580
Lime	Light	H	375	390	Slate	Dark	S	1580	1630
Slate	Dark	S	390	410	Sand (slate)	Light	H	1630	1645
Lime	Light	H	410	434	Slate	Dark	S	1645	1685
Coal					3rd Salt S.	Light	H	1685	1735
Waynesburg	Blk	S	434	439	Slate	Dark	S	1735	1768
Slate	Dark	S	439	510	Lime (Gritty)	Li.	H	1768	1795
Lime	Light	H	510	635	Slate	Light	S	1795	1823
Coal	Blk	S	635	640	Lime	White	H	1823	1830
(Mapletown)					Pencil Cave				
Lime	Dark	H	640	680	Sand	Dark	S	1830	1833
Slate	Dark	S	680	700	Big Lime S.	Li.	H	1833	1889
Lime (Gritty)	Light	H	700	725	Big Injun S	Li.	H	1889	2145
Slate	Dark	S	725	740	Slate	Dark	S	2145	2314
Pgh Coal	Blk	S	740	748	Lime (Gritty)	Li.	H	2314	2354
Lime	Dark	H	748	774	Slate	Li.	S	2354	2534
Sand	White	H	774	787	50' Sand	Li.	H	2534	2574
Rock	Red	S	787	815	Slate	Dark	S	2574	2594
Lime	White	H	815	820	Rock	Pink	S	2594	2659
Rock	Red	S	820	830	Slate	Dark	S	2659	2689
Lime	White	H	830	835	Sand	Light	H	2689	2719
Rock	Red	S	835	897	Slate	Light	S	2719	2744
Lime	White	H	897	915	Sand Gordon	Light	H	2744	2772
Slate	Light	S	915	926	Slate	Dark	S	2772	2804
Rock	Red	S	926	932	4th Sand	Light	H	2804	2816
Lime	Light	H	932	963	(Gas 2805' - 2808'	38/10 W.			in 2") 260 mcf
Rock	Red	S	963	998	Slate	Light	S	2816	2835
Lime	White	H	998	1015	5th Sand	Light	M	2835	2840
Rock	Red	S	1015	1053	(Gas 2836' - 2838'	30/10 W.			in 2") 231 mcf
Sand	Light	H	1053	1083	Slate	Dark	S	2840	2842
Slate	Dark	S	1083	1094					
Lime	Light	H	1094	1115	Total Depth				2842
Shale	Light	S	1115	1132					
Little									
Dunkard S.	Whi.	H	1132	1185					
Slate	Dark	S	1185	1241					
Big Dunkard									
Sand	Whi.	H	1241	1266					