

LATITUDE

39°57'30"

80°30'

LONGITUDE

△  
OGIS  
7.5' loc

7.5 OGIS topo location

7.5' loc 2.02 S 15' loc 4.90 S  
1.21 W (calc.) 1.21 W

Company Manuf. Light + Heat

Farm F.R. Doman

Quad Majorsville 7.5' Cameron NE

County Marshall

District Webster

WELL LOCATION MAP

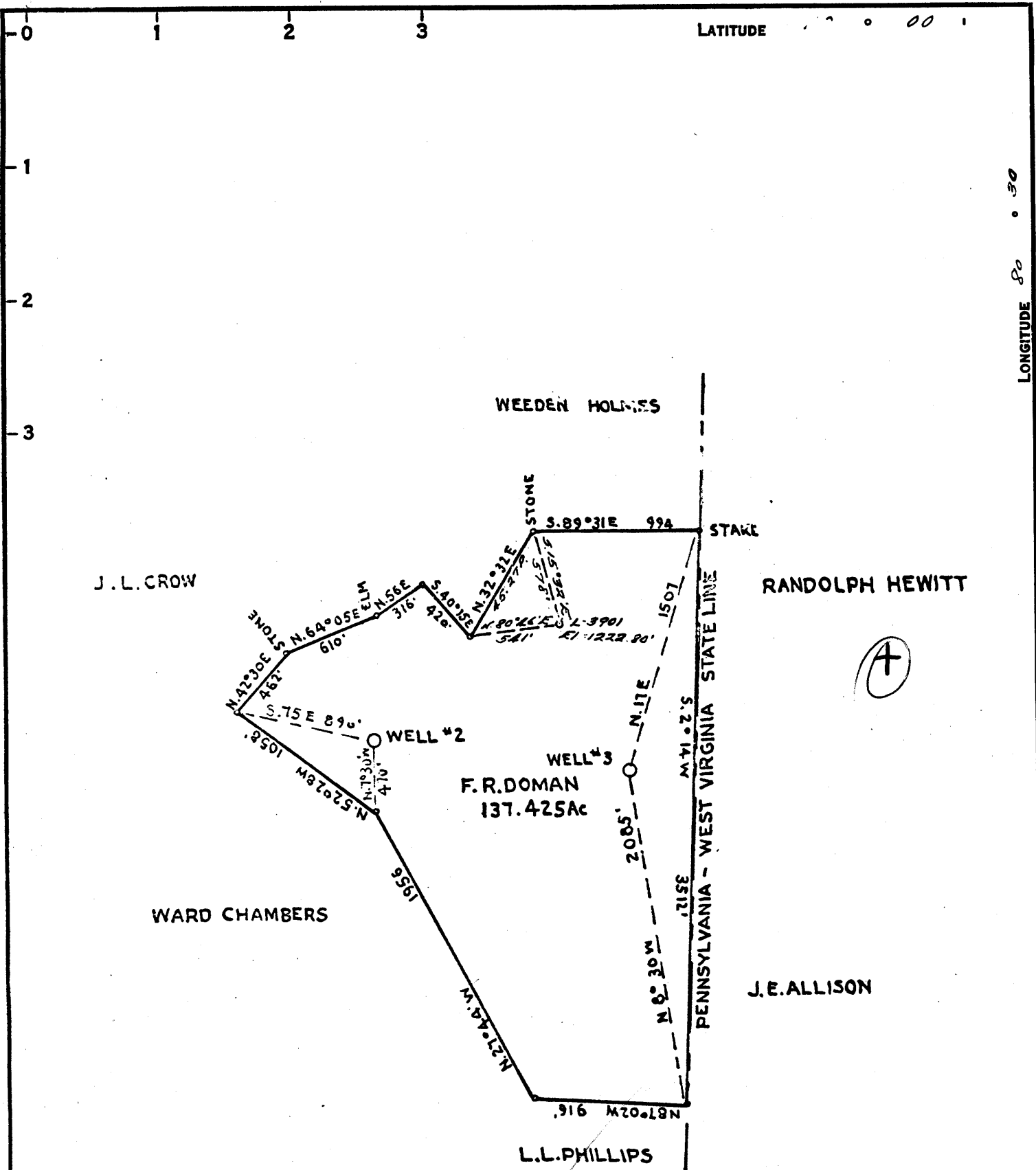
File No. 051-54

orig- 66

(022)

w/o- 9-0 (stamped)

(022)



LATITUDE 37° 00'

LONGITUDE 80° 30'

COAL OWNED BY PARTIAL PLUG

NEW LOCATION

DRILL DEEPER

ABANDONMENT

AUG 10 1959

*112 W*  
*Y-9*  
*0-25-10*

COMPANY THE MANUFACTURERS LIGHT & HEAT

ADDRESS 800 UNION TRUST BLDG. PGH. PA.

FARM F. R. DOMAN

TRACT \_\_\_\_\_ ACRES 137 LEASE No. 21654

WELL (FARM) No. 1 SERIAL No. 3901

ELEVATION (SPIRIT LEVEL) 1222.80'

QUADRANGLE CAMERON

COUNTY MARSHALL DISTRICT WEBSTER

ENGINEER A. G. Trotter M.E.

ENGINEER'S REGISTRATION No. 9442

FILE No. \_\_\_\_\_ DRAWING No. Y-25-10

DATE 28 JULY 59 SCALE 1" = 800

STATE OF WEST VIRGINIA  
DEPARTMENT OF MINES  
OIL AND GAS DIVISION  
CHARLESTON

WELL LOCATION MAP

FILE No. MARS-54-Pp  
(Storage) -

+ DENOTES LOCATION OF WELL ON UNITED STATES TOPOGRAPHIC MAPS. SCALE 1 TO 62,500. LATITUDE AND LONGITUDE LINES BEING REPRESENTED BY BORDER LINES AS SHOWN.

- DENOTES ONE INCH SPACES ON BORDER LINE OF ORIGINAL TRACING.

F. R. DOMAN No. 1 (3901) - M. L. & H. Co., - MARS-54-Pp

Marshall 54

WEST VIRGINIA DEPARTMENT OF MINES

OIL AND GAS DIVISION

PRELIMINARY DATA SHEET NO. 1

File No. \_\_\_\_\_

Well No. 1

Company of B. L. Frye  
on the F. R. Doman Farm

containing 137 acres. Location \_\_\_\_\_

Webster District, in Marshall County, West Virginia

The surface of the above tract is owned in fee by F. R. Doman  
of Tridelfhia W. Va. address, and the mineral rights are owned by \_\_\_\_\_ of \_\_\_\_\_

The oil and gas privileges are held under lease by the above named company, and this well is drilled under permit No. Mars-54 issued by the West Virginia Department of Mines, Oil and Gas Division September 30 1935.

Elevation of surface at top of well, 1150 ft. Spirit Barometric.

The number of feet of the different sized casings used in the well.

|             |           |                               |                       |                    |                 |
|-------------|-----------|-------------------------------|-----------------------|--------------------|-----------------|
|             | <u>12</u> | feet                          | <u>13 inch</u>        | size.              | Wood conductor. |
| <u>453</u>  | feet      | <u>10 inch</u>                | size, csg.            | feet               | sized csg.      |
| <u>1175</u> | feet      | <u>8 inch</u>                 | size, csg.            | feet               | sized csg.      |
| <u>1796</u> | feet      | <u>6 5/8 inch</u>             | size, csg. <u>out</u> | feet               | sized csg.      |
|             |           | packer of _____               |                       | size, set at _____ |                 |
|             |           | packer of _____               |                       | size, set at _____ |                 |
|             |           | in casing perforated at _____ |                       | feet to _____      | feet.           |
|             |           | in casing perforated at _____ |                       | feet to _____      | feet.           |

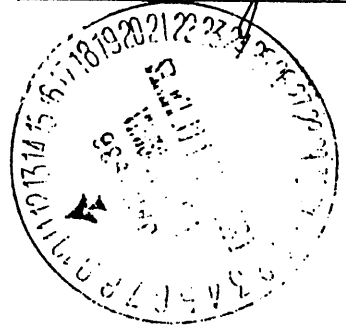
Coal was encountered at 225 feet, thick ness 5 ft inches, and at 375 feet; thickness 5 ft inches; and at 675 feet; thickness 5 ft inches.

Liners were used as follows: (Give details) 800 ft. 5 inch liner  
perforated 2700 ft. to 2720 ft.

Jan 10, 1936 Date.

Approved B. L. Frye, Owner.

By \_\_\_\_\_ (TITLE)



OIL OR GAS WELL

gas

B. L. Frye Company

Cameron, W. Va. Address

COMPLETION DATA SHEET

NO. 2

FORMATION RECORD

WELL NO. 1

FARM

F. R. Joman

| Name             | Color         | Character   | Oil, Gas or Water     | Top  | Bottom | Thickness | Total Depth            | Remarks      |
|------------------|---------------|-------------|-----------------------|------|--------|-----------|------------------------|--------------|
| Wood Conductor   |               |             |                       |      | 12ft   | 12ft      | 12ft                   |              |
| Slate + Lime     | white + black | hard + soft |                       |      | 110    | 110       | 110                    |              |
| Sand             | white         | hard        | water 120ft           | 110  | 125    | 15ft      | 125                    |              |
| Slate            | dark          | soft        |                       | 125  | 225    | 100ft     | 225                    |              |
| Coal (Cygaback)  | black         | soft        | water 225             | 225  | 230    | 5         | 230                    |              |
| Slate + Lime     | blk + white   | hard + soft | " 395'                | 230  | 375    | 145       | 375                    |              |
| Weynesburg Coal  | black         | soft        |                       | 375  | 380    | 5         | 380                    | - 390 - 395' |
| Lime             | white         | hard        |                       | 380  | 565    | 185       | 565                    |              |
| Slate + Lime     | blk + white   | hard + soft | Mapleton coal 575-581 | 565  | 675    | 110       | 675                    |              |
| Pittsburgh Coal  | black         | soft        |                       | 675  | 680    | 5         | 680                    |              |
| Lime + Red Rock  | red           | hard + soft | water 678'            | 680  | 780    | 100       | 780                    |              |
| Murphy Sand      | white         | hard        |                       | 780  | 795    | 15        | 795                    |              |
| Red Rock + Slate | red           | soft        |                       | 795  | 965    | 170       | 965                    |              |
| Sand             | white         | hard        |                       | 965  | 996    | 31        | 996                    |              |
| Slate + Lime     | light         | hard + soft |                       | 996  | 1080   | 84        | 1080                   |              |
| Little Dunkard   | white         | hard        |                       | 1080 | 1100   | 20        | 1100                   |              |
| Slate            | dark          | soft        |                       | 1100 | 1175   | 75        | 1175                   |              |
| Big Dunkard      | white         | hard        |                       | 1175 | 1195   | 20        | 1195                   |              |
| Slate + Lime     | dark          | hard + soft |                       | 1195 | 1335   | 140       | 1335                   |              |
| Sand             | white         | hard        |                       | 1335 | 1385   | 50        | 1385                   |              |
| Slate + Lime     | white         | hard        |                       | 1385 | 1585   | 200       | 1585                   |              |
| Salt Sand        | white         | hard        | water + gas           | 1585 | 1650   | 65        | 1650                   |              |
| Slate            | black         | soft        | gas 1628-1630'        | 1650 | 1800   | 150       | 1800                   |              |
| Big Injun        | white         | hard        | gas 1875              | 1800 | 2010   | 210       | 2010                   |              |
| Slate            | dark          | Soft        | water 1905'           | 2010 | 2540   | 530       | 2540                   |              |
| 50 ft sand       | white         | hard        |                       | 2540 | 2615   | 75        | 2615                   |              |
| Slate            | white         | soft        |                       | 2615 | 2710   | 95        | 2710                   |              |
| Sand             | white         | hard        | gas 2715              | 2710 | 2719   | 9         | 2719                   |              |
| Slate + Shells   | dark          | soft        |                       | 2719 | 2812   | 93        | 2812                   |              |
| Total depth      |               |             |                       |      |        |           | (3401)                 |              |
|                  |               |             |                       |      |        |           | (Blugged back to 1767) | 340'         |

shot Well was shot at 1875-1880 feet; well was shot at \_\_\_\_\_ feet.

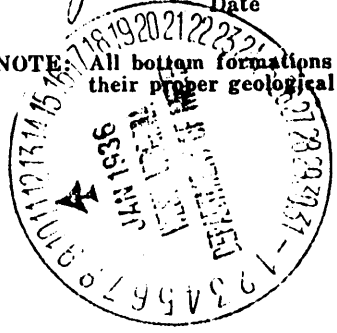
Salt Fresh water at 1637 feet; salt fresh water at 120 and 230 feet.

producing Well was \_\_\_\_\_ hole.

Jan 10 1936 Date

Approved B. L. Frye Owner

NOTE: All bottom formations must be noted as indicated above and all key-rocks and oil and gas sands must be recorded under their proper geological names in the district as well as any local names commonly used in the district for such strata.





STATE OF WEST VIRGINIA  
DEPARTMENT OF MINES  
OIL AND GAS DIVISION

Quadrangle Cameron  
Permit No. inars 54

WELL RECORD

Oil or Gas Well Gas  
(KIND)

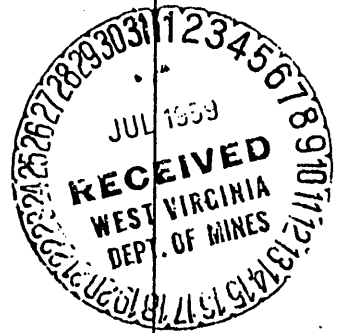
Company The Manufacturers Light and Heat Company  
Address 800 Union Trust Building, Pgh. 19, Penna.  
Farm F. R. Doman Acres 137  
Location (waters) \_\_\_\_\_  
Well No. 3901 Elev. 1222.80'  
District Webster County Marshall  
The surface of tract is owned in fee by \_\_\_\_\_  
Address \_\_\_\_\_  
Mineral rights are owned by \_\_\_\_\_  
Address \_\_\_\_\_  
Drilling commenced September 25, 1935  
Drilling completed October 31, 1935  
Date Shot \_\_\_\_\_ From \_\_\_\_\_ To \_\_\_\_\_  
With \_\_\_\_\_

| Casing and Tubing | Used in Drilling | Left in Well | Packers        |
|-------------------|------------------|--------------|----------------|
| Size              |                  |              | Kind of Packer |
| 16                |                  |              |                |
| 13                |                  |              |                |
| 10 "              | 453'0"           |              | Size of        |
| 8 1/4 "           | 1175'1"          |              |                |
| 6 1/2 "           | 1828'9"          |              | Depth set      |
| 5 3/16 "          | 955'8"           |              |                |
| 3                 |                  |              | Perf. top      |
| 2                 |                  |              | Perf. bottom   |
| Liners Used       |                  |              | Perf. top      |
|                   |                  |              | Perf. bottom   |

Open Flow \_\_\_\_\_ /10ths Water in \_\_\_\_\_ Inch  
\_\_\_\_\_ /10ths Merc. in \_\_\_\_\_ Inch  
Volume \_\_\_\_\_ Cu. Ft.  
Rock Pressure \_\_\_\_\_ lbs. \_\_\_\_\_ hrs.  
Oil \_\_\_\_\_ bbls., 1st 24 hrs.  
Fresh water \_\_\_\_\_ feet \_\_\_\_\_ feet  
Salt water \_\_\_\_\_ feet \_\_\_\_\_ feet

CASING CEMENTED \_\_\_\_\_ SIZE \_\_\_\_\_ No. Ft. \_\_\_\_\_ Date \_\_\_\_\_  
COAL WAS ENCOUNTERED AT \_\_\_\_\_ FEET \_\_\_\_\_ INCHES  
\_\_\_\_\_ FEET \_\_\_\_\_ INCHES FEET \_\_\_\_\_ INCHES  
\_\_\_\_\_ FEET \_\_\_\_\_ INCHES FEET \_\_\_\_\_ INCHES

| Formation       | Color | Harder<br>or<br>THICKNESS | Top  | Bottom | Oil, Gas<br>or Water | Depth<br>Found | Remarks       |
|-----------------|-------|---------------------------|------|--------|----------------------|----------------|---------------|
| Conductor       |       |                           |      | 12     | Purchased from       | Dunn-Mar       | Oil & Gas Co. |
| Slate and Line  |       |                           | 12   | 110    |                      |                |               |
| Sand            |       |                           | 110  | 125    | 1 lb. water          | at 120         |               |
| Slate           |       |                           | 125  | 225    |                      |                |               |
| Coal Clabapple  |       |                           | 225  | 230    | 3 lbs. water         |                |               |
| Slate and Line  |       |                           | 230  | 375    |                      |                |               |
| Coal Waynesburg |       |                           | 375  | 380    |                      |                |               |
| Lime            |       |                           | 380  | 565    | 10" 448 ft.          | 5 in.          |               |
| Slate           |       |                           | 565  | 575    |                      |                |               |
| Lime            |       |                           | 575  | 668    |                      |                |               |
| Slate           |       |                           | 668  | 675    |                      |                |               |
| Coal Pittsburgh |       |                           | 675  | 680    |                      |                |               |
| Slate           |       |                           | 680  | 685    |                      |                |               |
| Lime            |       |                           | 685  | 730    |                      |                |               |
| Pink            |       |                           | 730  | 740    |                      |                |               |
| Lime            |       |                           | 740  | 770    |                      |                |               |
| Red Rock        |       |                           | 770  | 780    |                      |                |               |
| M. Sand         |       |                           | 780  | 795    |                      |                |               |
| Red Rock        |       |                           | 795  | 825    |                      |                |               |
| Lime            |       |                           | 825  | 845    |                      |                |               |
| Red Rock        |       |                           | 845  | 855    |                      |                |               |
| Lime            |       |                           | 855  | 865    |                      |                |               |
| Slate, white    |       |                           | 865  | 925    |                      |                |               |
| Red Rock        |       |                           | 925  | 950    |                      |                |               |
| Slate           |       |                           | 950  | 965    |                      |                |               |
| Sand            |       |                           | 965  | 996    |                      |                |               |
| Slate, white    |       |                           | 986  | 1005   |                      |                |               |
| Lime            |       |                           | 1005 | 1013   |                      |                |               |
| Slate           |       |                           | 1013 | 1020   |                      |                |               |
| Lime            |       |                           | 1020 | 1028   |                      |                |               |
| Slate, white    |       |                           | 1028 | 1055   |                      |                |               |
| Lime            |       |                           | 1055 | 1075   |                      |                |               |
| Red Rock        |       |                           | 1075 | 1080   |                      |                |               |
| Little Dunkard  |       |                           | 1082 | 1100   |                      |                |               |
| Slate           |       |                           | 1100 | 1175   |                      |                |               |
| Big Dunkard     |       |                           | 1175 | 1195   |                      |                |               |
| Slate           |       |                           | 1195 | 1202   |                      |                |               |
| Land            |       |                           | 1202 | 1230   |                      |                |               |



| Formation        | Color | Hard or Soft | Top  | Bottom | Oil, Gas or Water                | Depth Found | Remarks        |
|------------------|-------|--------------|------|--------|----------------------------------|-------------|----------------|
| Slate            |       |              | 1230 | 1263   |                                  |             |                |
| Coal - Freeport  |       |              | 1263 | 1268   |                                  |             |                |
| Slate            |       |              | 1268 | 1272   |                                  |             |                |
| Lime             |       |              | 1272 | 1295   |                                  |             |                |
| Coal             |       |              | 1295 | 1298   | Gas                              |             |                |
| Slate - white    |       |              | 1298 | 1304   |                                  |             |                |
| Lime             |       |              | 1304 | 1330   |                                  |             |                |
| Slate            |       |              | 1330 | 1335   |                                  |             |                |
| Gas Sand         |       |              | 1335 | 1385   |                                  |             |                |
| Slate            |       |              | 1385 | 1427   |                                  |             |                |
| Lime             |       |              | 1427 | 1430   |                                  |             |                |
| 1st Salt Sand    |       |              | 1430 | 1525   | Gas 1457 S. L. Water 1457-1467   |             |                |
| Coal             |       |              | 1525 | 1530   |                                  |             |                |
| Slate            |       |              | 1530 | 1585   |                                  |             |                |
| 2nd Salt Sand    |       |              | 1585 | 1650   | 1615-1623 Gas                    |             |                |
| Lime             |       |              | 1650 | 1675   |                                  |             |                |
| Slate            |       |              | 1675 | 1688   |                                  |             |                |
| 3rd Salt Sand    |       |              | 1688 | 1700   |                                  |             |                |
| Lime             |       |              | 1700 | 1710   |                                  |             |                |
| Gonthy Lime      |       |              | 1710 | 1745   |                                  |             |                |
| Slate            |       |              | 1745 | 1750   |                                  |             |                |
| Little Lime      |       |              | 1750 | 1771   | 6" 1750                          |             |                |
| Brake            |       |              | 1771 | 1781   | Shot 30 qt. at 1875-80           |             |                |
| Big Lime         |       |              | 1781 | 1800   |                                  |             |                |
| Big Injun        |       |              | 1800 | 2010   |                                  |             |                |
| Slate and Shells |       |              | 2010 | 2335   |                                  |             |                |
| 30 ft. Sand      |       |              | 2335 | 2365   | Made 14/10 when drilled          |             | blowed down to |
| Slate            |       |              | 2365 | 2385   | 5/10 before shot                 |             |                |
| Gritty Lime      |       |              | 2385 | 2405   |                                  |             |                |
| Shells           |       |              | 2405 | 2468   | 94 mcf?                          |             |                |
| Pink Rock        |       |              | 2468 | 2475   |                                  |             |                |
| Sand             |       |              | 2475 | 2485   |                                  |             |                |
| 51 Foot Sand     |       |              | 2540 | 2545   |                                  |             |                |
| Sand             |       |              | 2610 | 2615   |                                  |             |                |
| Slate            |       |              | 2615 | 2660   |                                  |             |                |
| Sand             |       |              | 2660 | 2665   |                                  |             |                |
| Slate            |       |              | 2665 | 2710   |                                  |             | 189 mcf        |
| Sand             |       |              | 2710 | 2719   | Gas 2715 steel line 20/10 W. 2"  |             |                |
| Slate and Shells |       |              | 2719 |        |                                  |             |                |
| Total            |       |              |      | 2812   | Set perforation at 2700 to 2720. |             |                |

Mars - 54

Date July 28, 19 59

APPROVED THE MANUFACTURERS LIGHT AND HEAT CO., Owner

By Walter A. Mann  
(Title) Land Agent