

LATITUDE

3950

80 30

LONGITUDE

7.5' loc
1.60S

7.5 OGIS topo location

7.5' loc 1.60S
1.90W

15' loc 1.60S
(calc.) 1.90W

Company	_____
Farm	_____
SECTION MAP	
Quad	<u>Cameron</u> ↓ 15' SE
County	_____
District	<u>Liberty</u>

WELL LOCATION MAP
File No. Marshall 34

Liberty District, Marshall County, W. Va.

Manufacturers Light & Heat Co., Cameron, W. Va.

On 500 acres, surface owned by August Wendt Estate, Bank of Cameron,
Cameron, W. Va., and mineral rights by ML&H Co., Pittsburgh, Pa.

Drilled under permit ~~Wags-34~~, issued March 9, 1931.

Elevation, 1220'.

1 1/2" conductor, 16'; 10" casing, 328'; 8 1/4", 1349'; 7", 1819'; 3".

8 1/4 x 4 packer, set at 1795'.

Cage at 1799'.

Coal was encountered at 535-544, 904-909, and 1530-1534'.

Completion reported to Dept. of Mines April 29, 1931.

Well was not shot.

Fresh water at 90'; salt water at 1020'.

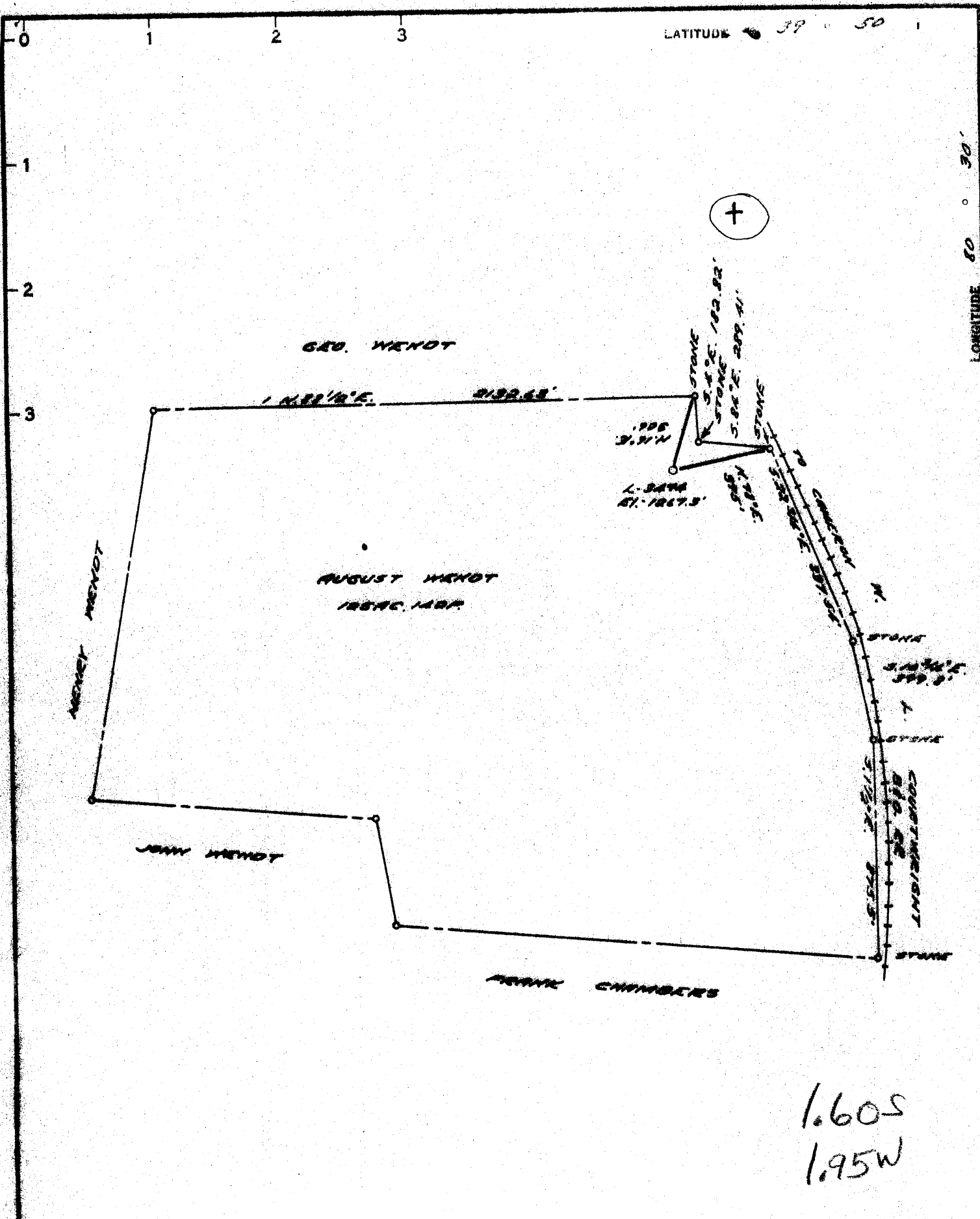
Gas well.

	Top.	Bottom.
Clay, light, soft	0	45
Lime, light, soft (water at 90')	45	90
Slate, dark, soft	90	125
Red rock, soft	125	134
Lime, gray, hard	134	150
Slate, dark, medium	150	160
Lime, gray, hard	160	200
Slate, dark, soft	200	240
Red rock, soft	240	255
Sand, light, hard	255	300
Slate, dark, medium	300	380
Lime, light, hard	380	400
Slate, dark, soft	400	490
Lime, light, hard	490	535
✓ Coal, black, soft	535	546
Sand, light, medium	546	600
✓ Waynesburg Coal, black, soft	600	606
Lime, light, hard	606	798
✓ Coal, black, soft	798	803
Lime, light, hard	803	904
✓ Pittsburgh Coal, black, soft	904	909
Lime, light, hard	909	930
Slate, dark, soft	930	960
Lime, light, hard	960	990
Slate, dark, soft	990	1010
Sand, gray, hard (water, 1020')	1010	1030
Red rock, soft	1030	1045
Slate, dark, soft	1045	1050
✓ Murphy Sand, light, hard	1050	1070
Slate, dark, soft	1070	1120
Lime, light, gritty	1120	1138
Red rock, soft	1138	1200
Slate, dark, soft	1200	1240
Red rock, soft	1240	1260
Slate, dark, soft	1260	1270
Red rock, soft	1270	1320
✓ Little Dunkard Sand, gray, hard	1320	1330
Slate, light and dark, soft	1330	1370
Lime, light, hard	1370	1380
Slate, dark, soft	1380	1420
Lime, light, medium	1420	1425

(OVER)

AUGUST WENDT ESTATE NO. 3474 WELL (Continued).

	Top.	Bottom.
Slate, dark, soft	1425	- 1445
Lime, light, hard	1445	- 1450
Slate, dark, soft	1450	- 1460
Sand, gray, hard	1460	- 1474
Slate, dark, soft	1474	- 1500
Lime, light, hard	1500	- 1505
Slate, dark, soft	1505	- 1525
Lime, light, hard	1525	- 1530
✓ Freeport Coal, black, soft	1530	- 1534
Slate, dark, hard	1534	- 1550
Lime, light, hard	1550	- 1570
✓ 1st Salt Sand, gray, hard <i>2nd continuation</i>	1570	- 1600
Slate, dark, soft	1600	- 1682
Lime shells, light, soft	1682	- 1720
Slate, dark, soft	1720	- 1750
Lime shells, light, hard	1750	- 1794
✓ 2nd Salt Sand, gray, hard (gas pay at 1798')	1794	
Total depth		1803



1.60S
1.95W

COAL OWNED BY (AUGUST WENDT) M. A. Hanna Co., et al.

- NEW LOCATION
- RECONDITION
- DRILL DEEPER
- ABANDONMENT

"I, the undersigned, hereby certify that this map is correct to the best of my knowledge and belief and shows all the information required by paragraph 6 of the rules and regulations of the oil and gas section of the mining laws of West Virginia."

Minimum degree of accuracy is one part in 200'

Signed Robert M. Heill (L.O.S.) (D.C.)

SEEKED 10-5-67

COMPANY THE MANUFACTURERS LIGHT & HEAT

ADDRESS 800 UNION TRUST BLDG., PCH. PA.

FARM AUGUST WENDT

MAP 0-26/25 ACRES 500 LEASE NO. 2872

WELL (FARM) NO. 1 SERIAL NO. 3494

ELEVATION (SPIRIT LEVEL) 1267.3'

QUADRANGLE CHAMBERN 36

COUNTY MARSHALL DISTRICT LIBERTY

POINT OF PROVEN ELEVATION B.M. 1209' S.W. CORNER
OF WELLING TUNNEL

FILE NO. Y-28-474 DRAWING NO. Y-28-474

DATE 30 AUG. 1967 SCALE 1" = 800'

STATE OF WEST VIRGINIA

DEPARTMENT OF MINES

OIL AND GAS DIVISION

CHARLESTON

WELL LOCATION MAP

FILE NO. MAR 5-492-A

+ DENOTES LOCATION OF WELL ON UNITED STATES TOPOGRAPHIC MAPS. SCALE 1 TO 62,500. LATITUDE AND LONGITUDE LINES BEING REPRESENTED BY BORDER LINES AS SHOWN.

-- DENOTES ONE INCH SPACES ON BORDER LINE OF ORIGINAL TRACING.