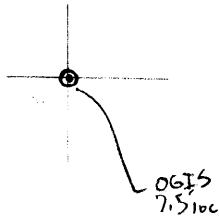


LATITUDE

39°52'30"

80°30'

LONGITUDE



7.5 OGIS topo location

7.5' loc	<u>1.23 S</u>	15' loc	<u>4.11 S</u>
	<u>2.09 W</u>	(calc.)	<u>2.08 W</u>

Company Manuf. Light + Heat

Farm W. B. Hicks

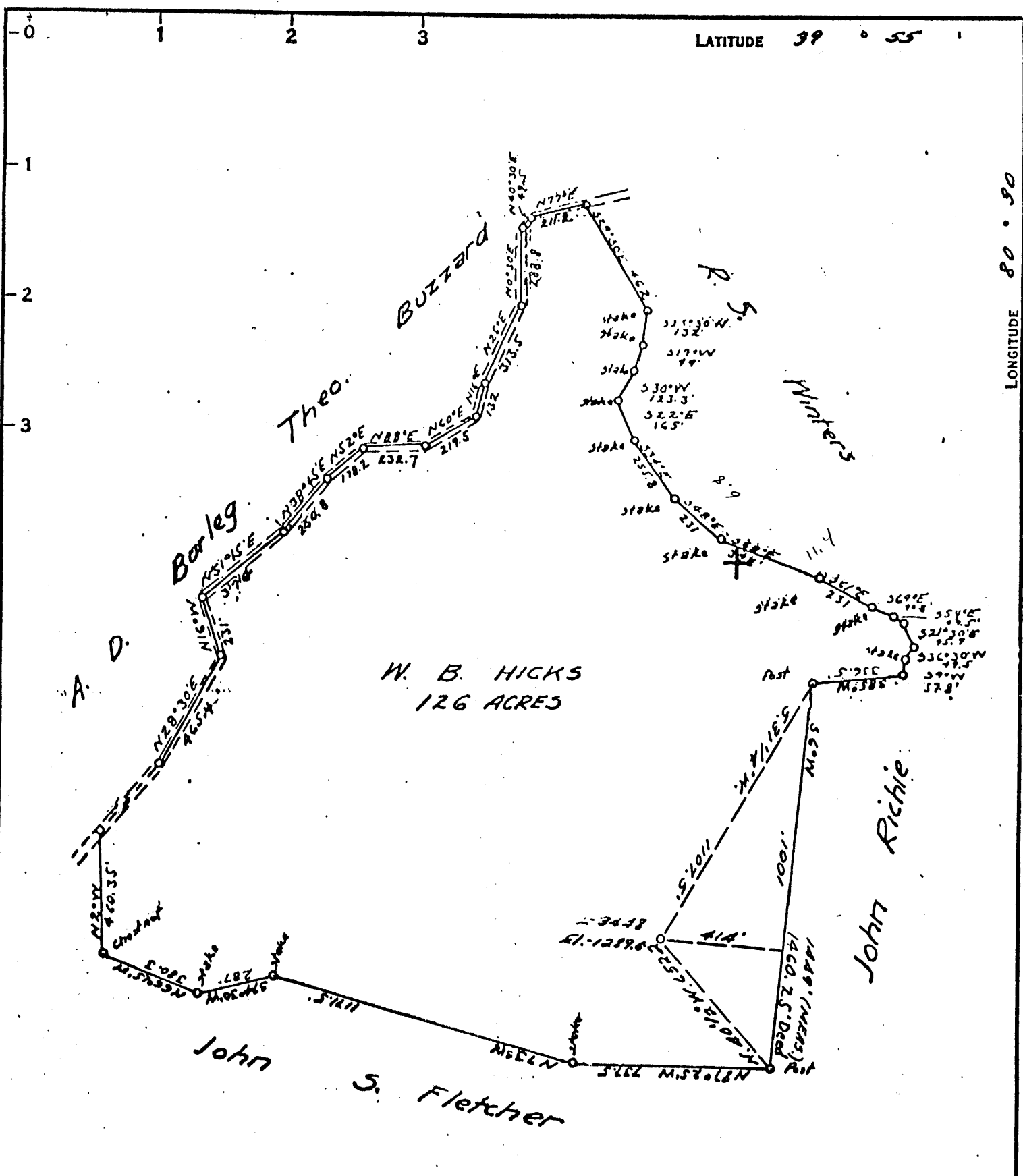
Quad Cameron 7.5' Cameron EC

County Marshall

District Cameron

WELL LOCATION MAP

File No. 051-24



COAL OWNED BY _____

NEW LOCATION...

DRILL DEEPER...

ABANDONMENT...

COMPANY THE MANUFACTURERS LIGHT & HEAT

ADDRESS 800 UNION TRUST BLDG. PGM. PA.

FARM W. B. HICKS

TRACT _____ ACRES 126 LEASE NO. 12130

WELL (FARM) NO. 1 SERIAL NO. 3448

ELEVATION (SPIRIT-LEVEL) 1289.6'

QUADRANGLE CAMERON

COUNTY MARSHALL DISTRICT CAMERON

ENGINEER Robert M. Hill

ENGINEER'S REGISTRATION NO. 361-E. (N.E.)

FILE NO. _____ DRAWING NO. Y-25-569

DATE 12 JUNE 62 SCALE 1"=500'

STATE OF WEST VIRGINIA
DEPARTMENT OF MINES
OIL AND GAS DIVISION
CHARLESTON

WELL LOCATION MAP

FILE NO. Marshall 24

+ DENOTES LOCATION OF WELL ON UNITED STATES TOPOGRAPHIC MAPS. SCALE 1 TO 62,500. LATITUDE AND LONGITUDE LINES BEING REPRESENTED BY BORDER LINES AS SHOWN.

- DENOTES ONE INCH SPACES ON BORDER LINE OF ORIGINAL TRACING.

Cameron District, Marshall County, W. Va.

The Manufacturers Light & Heat Co., 800 Union Trust Bldg.,
Pittsburgh, Pa.

Own 126 acres, surface owned by W. B. Hicks, Cameron, W. Va., and
mineral rights by MAH Co., Pittsburgh, Pa.

Drilled under permit Mars-24, issued July 21, 1930.

Elevation, 1320'.

15' conductor; 10" casing, 176' 7"; 8" casing, 1161' 6";
6-5/8" casing, 1914' 5"; 5-5/8" casing, 2069' 3".

Coal was encountered at 525-530, 708-713, and 808-815'.

Completion reported to Dept. of Mines Feb. 10, 1931.

Well was not shot.

Fresh water at 120, 527 and 812'; salt water in B.I. at 2040'.

Gas well.

	Top.	Bottom.
Clay and slate, dark, soft (water, 120')	0	205
Sand and lime, light, hard	205	465
Bluff Sand, light, hard	465	525
✓ Waynesburg Coal, black, soft (water, 527')	525	530
✓ Mapletown Coal, black, soft	708	713
✓ Pittsburgh Coal, black, soft (water, 812')	808	815
✓ Little Dunkard Sand, white, hard	1180	1190
✓ Big Dunkard Sand, light, hard	1290	1345
✓ Salt Sand, light, hard	1795	1845
✓ Big Lime, white, hard	1900	1954
✓ Big Injun Sand, white, hard (water, 2040')	1954	2211
✓ 30-Ft. Sand, light, broken	2540	2590
✓ 30-Ft. Sand, light, hard (gas)	2716	2747
✓ Gordon Stray Sand, hard, white (gas)	2771	2782
Total depth		2782

HICKS & PIPES NO. 3113 WELL.

Marshall-24?

Cameron District, Marshall County, N. Va.

By Manufacturers Light & Heat Co.

Completed Feb. 3, 1931.

Record from Mr. Schillhorn Sept. 30, 1939.

	Top.	Bottom.
Pittsburgh Coal	264	- 275
Murphy Sand	405	- 425
Little Dunkard Sand	572	- 596
Big Dunkard Sand	750	- 762
Gas Sand	1002	- 1037
Salt Sand	1168	- 1253
Big Lime	1356	- 1390
Big Injun Sand	1390	- 1690
Gantz Sand	2095	- 2110
50-Foot Sand	2130	- 2165
30-Foot Sand	2240	- 2260
Gordon Sand	2285	- 2350
4th Sand	2376	- 2400
5th Sand (gas, 2113')	2437	- 2465
Total depth		2511

WEST VIRGINIA DEPARTMENT OF MINES

Oil and Gas Section

PRELIMINARY DATA SHEET NO. 1

File No. Mars-24

Well No. 3448

The Manufacturers Light & Heat Company, of 800 Union Trust Building,

Pittsburgh, Pennsylvania, on the W. B. Hicks Farm

containing 126 acres. Location.....

Cameron District, in Marshall County, West Virginia.

The surface of the above tract is owned in fee by W. B. Hicks

of Cameron, W. Va., address, and the mineral rights are owned by

The Manufacturers Light & Heat Co., of Pittsburgh, Pennsylvania,

The oil and gas privileges are held under lease by the above named company, and this well is drilled under permit No. Mars. 24 issued by the West Virginia Department of Mines, Oil and Gas Section,

July 21st, 1930

Elevation of surface at top of well, 1320 feet Spirit Barometric.

The number of feet of the different sized casings used in the well.

~~15 feet~~ feet 15 foot size. Wood conductor

176'7" feet 10" size, csg. 1161'6" feet 8 1/4" sized csg.

1914'5" feet 6 5/8" size, csg. 2069'8" feet 5 5/8" sized csg.

feet size, csg. feet sized csg.

packer of size, set at

packer of size, set at

in casing perforated at feet to feet.

in casing perforated at feet to feet.

Coal was encountered at 525 feet; thickness 60 inches, and at 708

feet; thickness 60 inches; and at 808 feet; thickness 84 inches.

Liners were used as follows: (Give details).....

February 10th, 1931

Date.

Approved THE MANUFACTURERS LIGHT & HEAT CO., Owner.

By Harry H. Fowler (Title) Land Agent.

816
2.7.31

maso-24

The Manufacturers Light & Heat Company
 800 Union Trust Bldg., Pittsburgh, Pa. Address

COMPLETION DATA SHEET
 NO. 2
 FORMATION RECORD

Name	Color	Character	Oil, Gas or Water	Top	Bottom	Thickness	Total Depth	Remarks
Clay & Slate	Dark	Soft	Water	0	205	205	205	
Sand & Lime	Light	Hard	None	205	465	260	465	
Buff Sand	Light	Hard	None	465	525	60	525	
Waynesburg Coal	Black	Soft	Water	525	530	5	530	
Mapletown Coal	"	Soft	None	708	713	5	713	
Pittsburgh Coal	"	Soft	Water	808	815	7	815	
Big D. Sand	White	Hard	None	1180	1190	10	1190	
Big D. Sand	Light	Hard	None	1290	1345	55	1345	
Salt Sand	Light	Hard	None	1795	1845	50	1845	
Big Lime	White	Hard	None	1900	1954	54	1954	
Big Injun	White	Hard	Water	1954	2211	257	2211	
10-Ft. Sand	Light	Broken	None	2540	2590	50	2590	
10-Ft. Sand	Light	Hard	Gas	2716	2747	31	2747	
Gordon Stray	Hard	White	Gas	2771	2782	11	2782	Total depth

Well was not shot at Not shot feet; well was shot at _____ feet.

Salt ~~fresh~~ water at 2040 ft. in Big Injun sand feet; ~~fresh~~ ^{salt} water at 120 ft. 527 ft. & 812 ft. feet.

Well was dry producing hole.

THE MANUFACTURERS LIGHT & HEAT COMPANY,

February 10th, 1931 Date Approved Harry H. Fowler Owner Land Agent.

NOTE: All bottom formations must be noted as indicated above and all key-rocks and oil and gas sands must be recorded under their proper geological names in the district as well as any local names commonly used in the district for such strata.