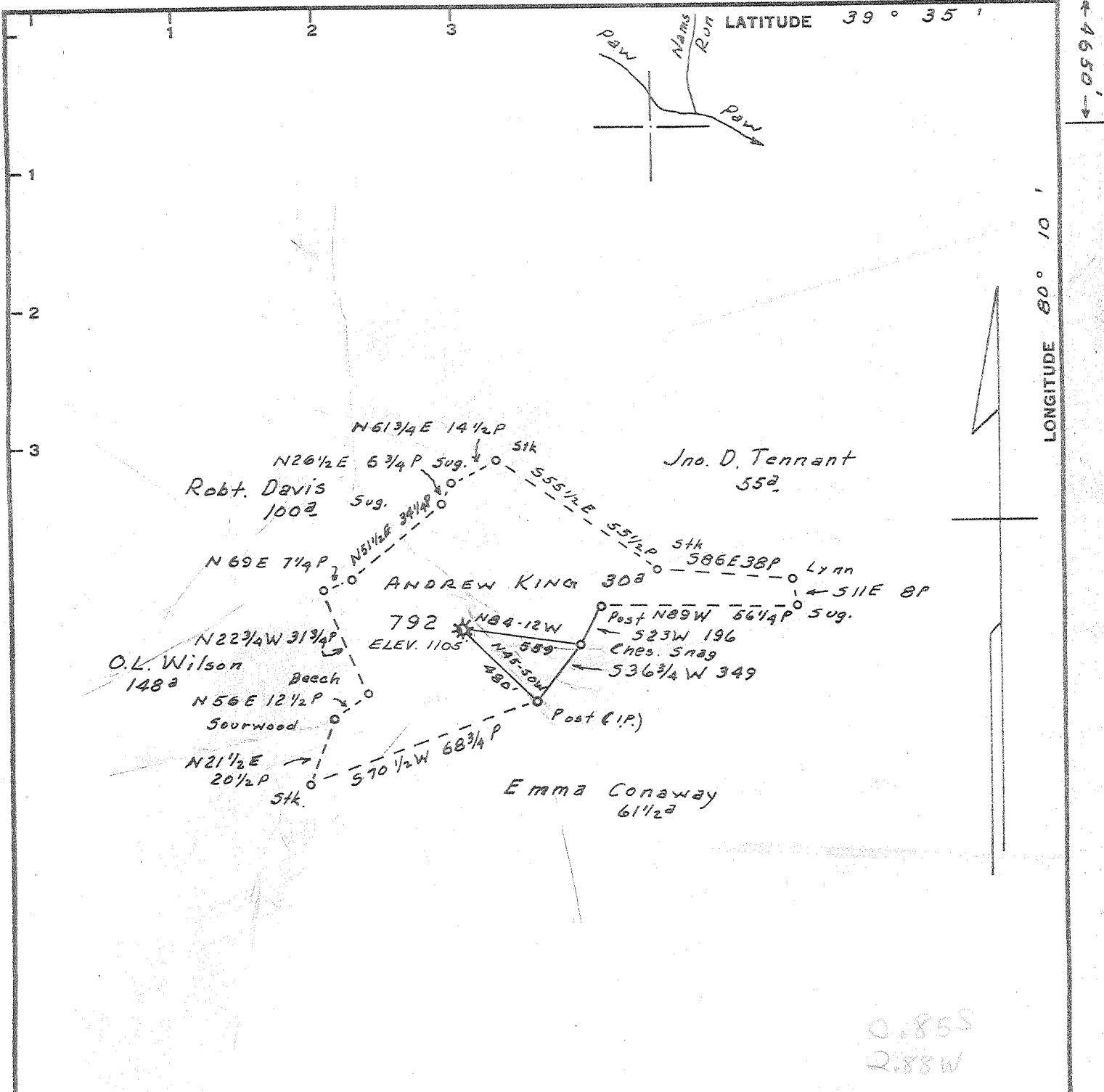


15,250'



0.855
2.88W

Minimum Error of Closure 1' in 200'
 Source of Elevation U.E. CHISELED SQUARE ON WEST END OF CONCRETE BRIDGE OVER PAW PAW CREEK AT MOUTH OF NANS RUN ELEV. 972.66'
 "I, the undersigned, hereby certify that this map is correct to the best of my knowledge and belief and shows all the information required by paragraph 6 of the rules and regulations of the oil and gas section of the mining laws of West Virginia."

New Location
 Drill Deeper
 Abandonment

2-22-68 MAPSHEET 27 N-8 E-22 F.B. 1421 Pg 26-27

Company CONSOLIDATED GAS SUPPLY CORP.
 Address CLARKSBURG, W. VA.
 Farm ANDREW KING
 Tract _____ Acres 30 Lease No. 5073
 Well (Farm) No. _____ Serial No. 792
 Elevation (Spirit Level) 1105
 Quadrangle BLACKSVILLE SW
 County MARION District PAW PAW
 Engineer Jackson M. Jarvis
 Engineer's Registration No. 2397
 File No. _____ Drawing No. _____
 Date 12-12-66 Scale 1" = 40'

STATE OF WEST VIRGINIA
 DEPARTMENT OF MINES
 OIL AND GAS DIVISION
 CHARLESTON

WELL LOCATION MAP
 FILE NO. MAR-931-A

+ Denotes location of well on United States Topographic Maps, scale 1 to 62,500, latitude and longitude lines being represented by border lines as shown.
 - Denotes one inch spaces on border line of original tracing.