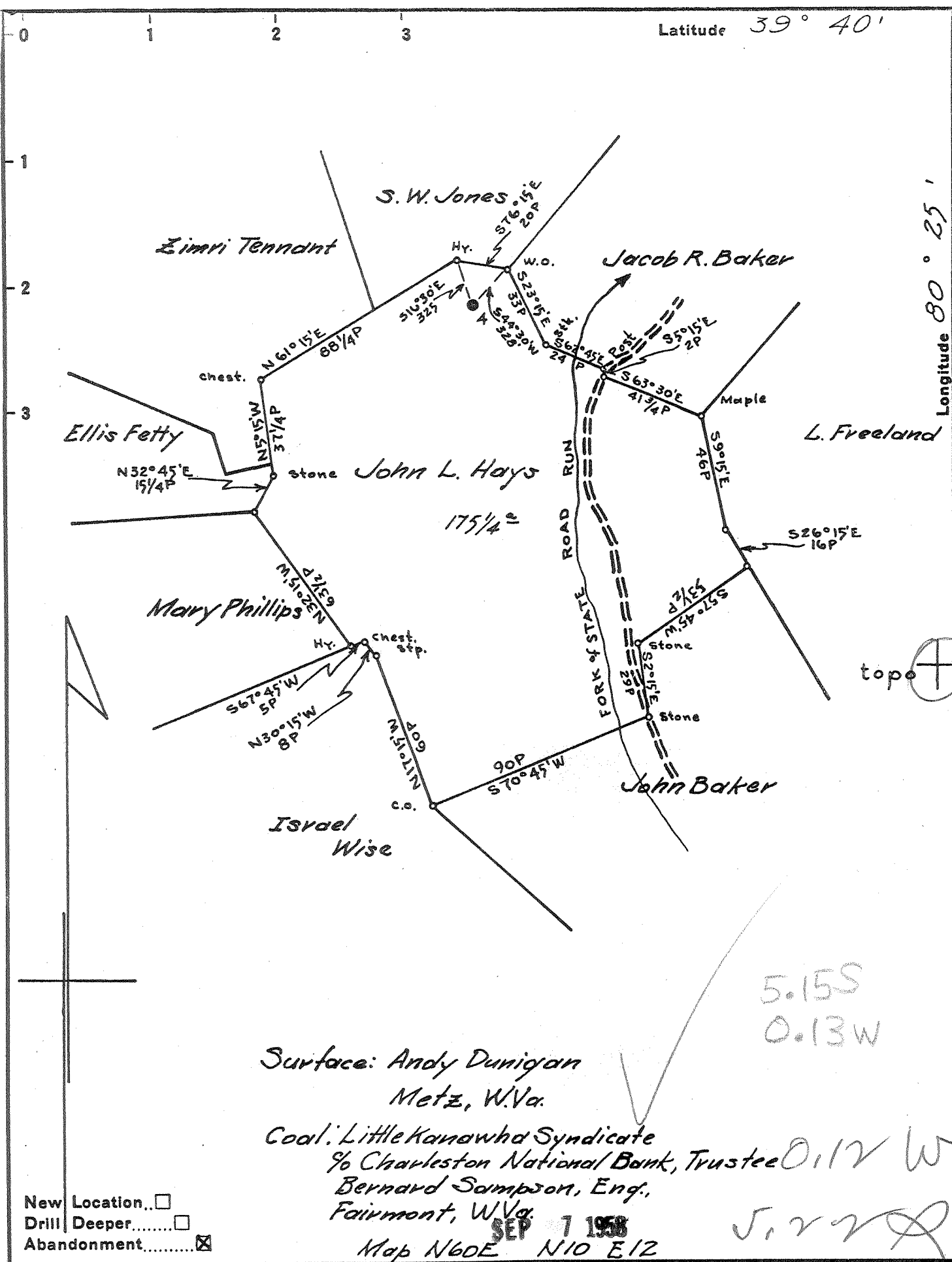


Latitude 39° 40'

Longitude 80° 25'



- New Location..
- Drill Deeper.....
- Abandonment.....

Surface: Andy Dunigan
Metz, W.Va.

Coal: Little Kanawha Syndicate
% Charleston National Bank, Trustee
Bernard Sampson, Eng.,
Fairmont, W.Va.

Map N60E N10 E12

5.15S
0.13W

0.12 W
J. V. V. D.

Company	South Penn Natural Gas Co.
Address	Parkersburg, W.Va.
Farm	J. L. Hays
Tract	Acres 175 1/4 Lease No. 81012
Well (Farm) No.	4 Serial No.
Elevation (Spirit Level)	1223.42 (Ground)
Quadrangle	Mannington
County	Marion District Mannington
Engineer	A. C. Hillcutt
Engineer's Registration No.	2534
File No.	Drawing No.
Date	July 26, 1958 Scale 1" = 800'

STATE OF WEST VIRGINIA
DEPARTMENT OF MINES
OIL AND GAS DIVISION
CHARLESTON

WELL LOCATION MAP
FILE NO. MAR-854-A

+ Denotes location of well on United States Topographic Maps, scale 1 to 62,500, latitude and longitude lines being represented by border lines as shown.

- Denotes one inch spaces on border line of original tracing.