

Latitude

.445  
2.19w

Longitude

Topo Location

7.5' Loc. \_\_\_\_\_ 15' Loc. \_\_\_\_\_  
\_\_\_\_\_ (calc.) \_\_\_\_\_

Company \_\_\_\_\_

Farm \_\_\_\_\_

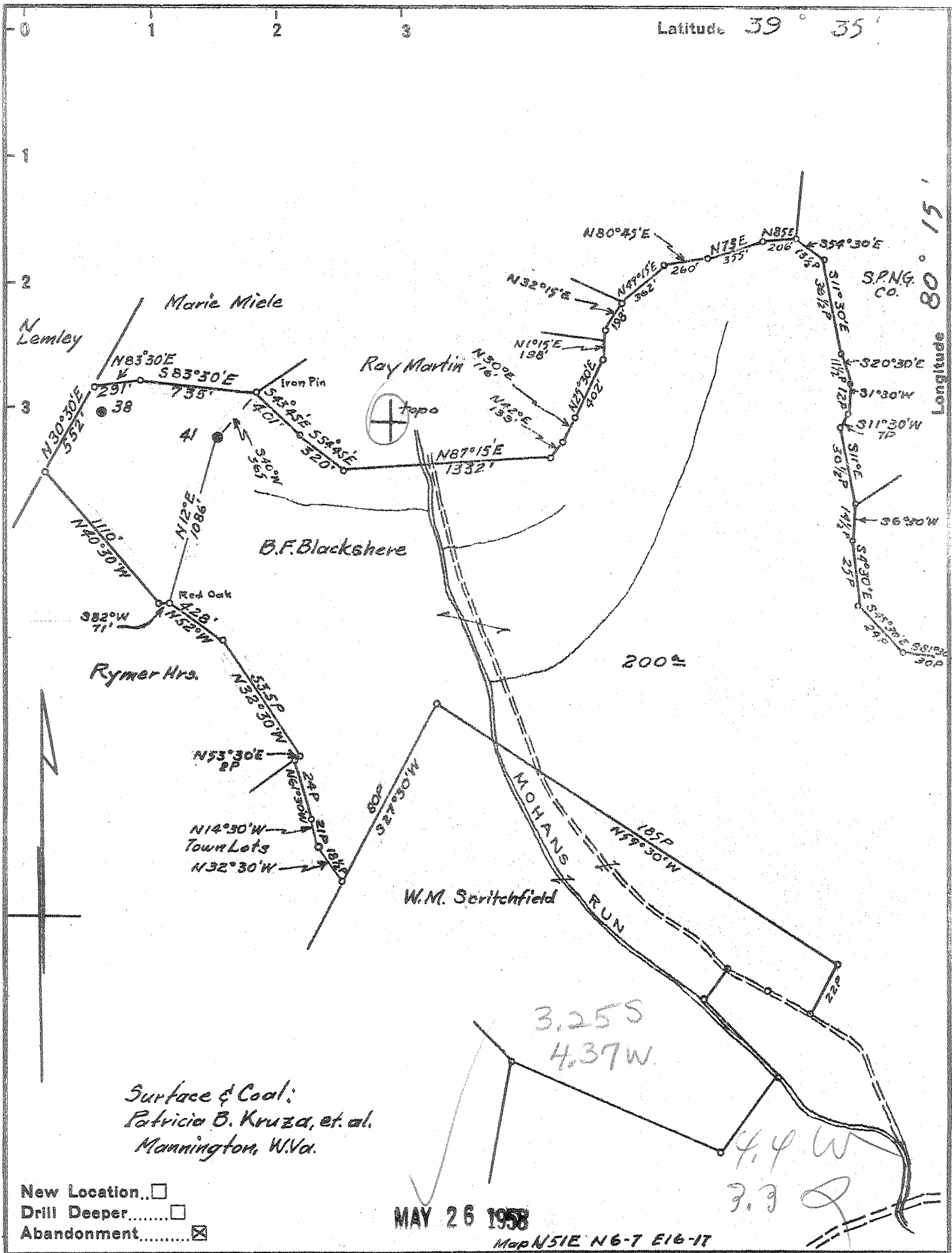
15' Quad \_\_\_\_\_  
(sec.)

7.5' Quad Mannington

District Mannington

WELL LOCATION PLAT

County 049 Permit 30849



Surface & Coal:  
 Patricia B. Kruza, et. al.  
 Mannington, W.Va.

New Location...   
 Drill Deeper.....   
 Abandonment.....

MAY 26 1958

Map N51E N6-7 E16-17

Company	South Penn Natural Gas Co.
Address	Parkersburg, W. Va.
Farm	B. F. Blackshere
Tract	Acres 200 Lease No. 2006
Well (Farm) No.	41 Serial No. _____
Elevation (Spirit Level)	1266.83 Casing head
Quadrangle	Mannington
County	Marion District Mannington
Engineer	A. C. Nieland
Engineer's Registration No.	2534
File No.	Drawing No. _____
Date	April 29, 1958 Scale 1" = 800'

STATE OF WEST VIRGINIA  
 DEPARTMENT OF MINES  
 OIL AND GAS DIVISION  
 CHARLESTON

WELL LOCATION MAP  
 FILE NO. MAR-849-A

+ Denotes location of well on United States Topographic Maps, scale 1 to 62,500, latitude and longitude lines being represented by border lines as shown.

- Denotes one inch spaces on border line of original tracing.