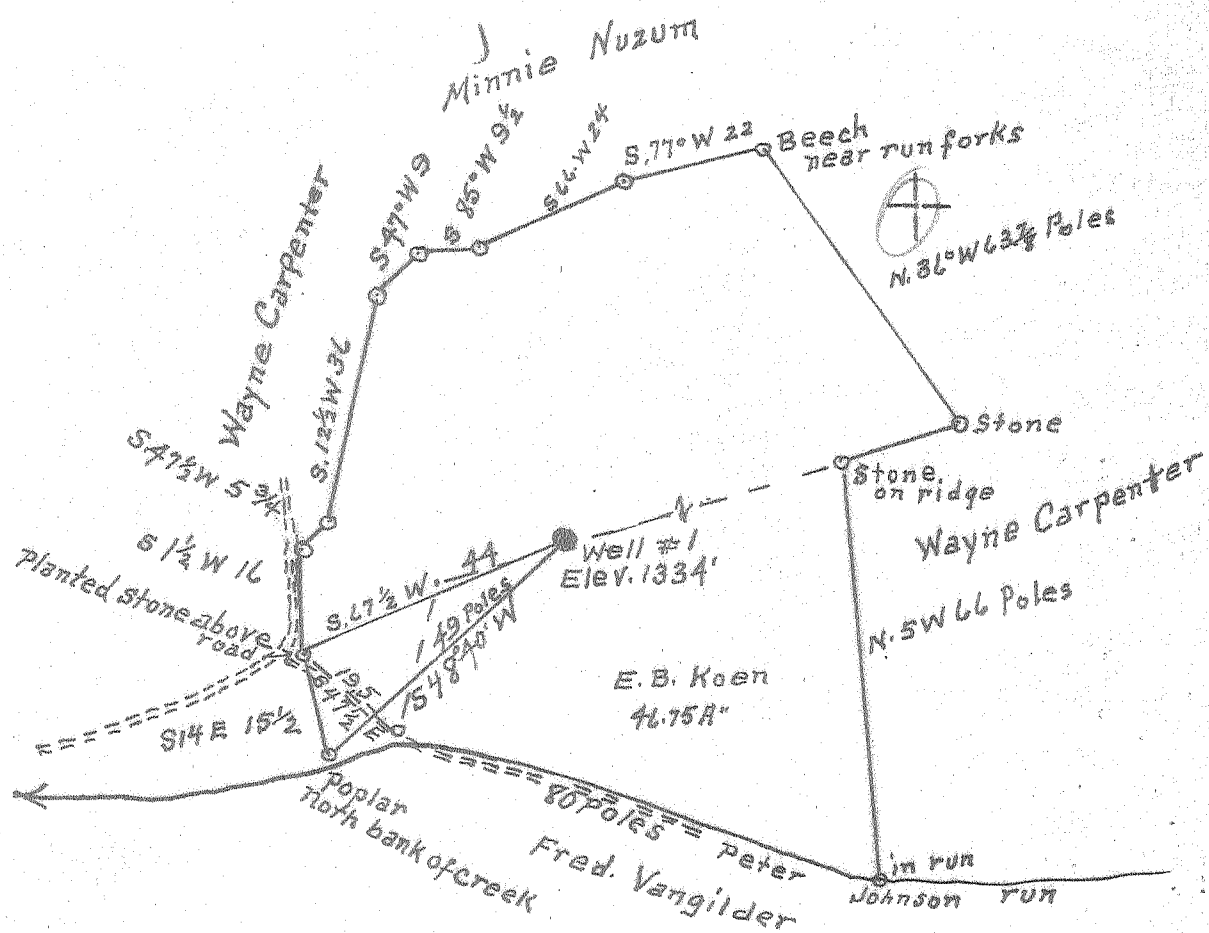


Latitude 39° 30'

Longitude 80° 00'



3.28S  
1.88W

1.9 W  
3.3 1/2

Surface - Burt Koen  
Mannington W. Va.  
Coal - Eastern Gas & Fuel Associates  
Grant Town, W. Va.

JULY 3 1956

New Location...   
Drill Deeper.....   
Abandonment.....

Company Nebo Fuel Co. Inc.  
 Address Fairmont W. Va.  
 Farm E. B. Koen  
 Tract 1 Acres 1 Lease No.           
 Well (Farm) No. 46.75 Serial No.           
 Elevation (Spirit Level) 1334'  
 Quadrangle Fairmont  
 County Marion District Winfield  
 Engineer A. L. Headley  
 Engineer's Registration No. 2021  
 File No.          Drawing No.           
 Date 7-18-55 Scale 1" = 500'

STATE OF WEST VIRGINIA  
DEPARTMENT OF MINES  
OIL AND GAS DIVISION  
CHARLESTON

WELL LOCATION MAP  
FILE NO. MAR-832-A

+ Denotes location of well on United States Topographic Maps, scale 1 to 62,500, latitude and longitude lines being represented by border lines as shown.

- Denotes one inch spaces on border line of original tracing.



STATE OF WEST VIRGINIA  
DEPARTMENT OF MINES  
OIL AND GAS DIVISION

917

Quadrangle Fairmont

Permit No. 837A

WELL RECORD

Oil or Gas Well Gas  
(KIND)

Company Nebo Fuel Co. Inc.,  
Address Fairmont, W. Va.  
Farm E. B. Keen Acres 46.75  
Location (waters) Peter Johnson Run  
Well No. one Elev. 1334  
District Winfield County Merion  
The surface of tract is owned in fee by Burt Keen  
Address Fairmont, W. Va.

Mineral rights are owned by \_\_\_\_\_  
Address \_\_\_\_\_

Drilling commenced Sept. 8, 1919  
Drilling completed Oct. 10, 1919

Date Shot no record From \_\_\_\_\_ To \_\_\_\_\_  
With \_\_\_\_\_

Open Flow \_\_\_\_\_ /10ths Water in \_\_\_\_\_ Inch  
\_\_\_\_\_ /10ths Merc. in \_\_\_\_\_ Inch

Volume no record Cu. Ft.

Rock Pressure " \_\_\_\_\_ lbs. \_\_\_\_\_ hrs.

Oil " \_\_\_\_\_ bbls., 1st 24 hrs.

Fresh water " \_\_\_\_\_ feet \_\_\_\_\_ feet

Salt water " \_\_\_\_\_ feet \_\_\_\_\_ feet

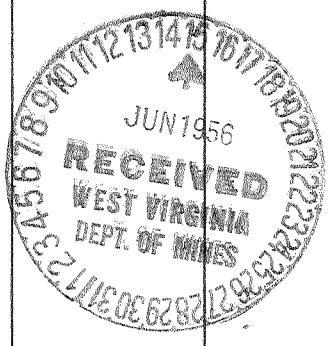
Casing and Tubing	Used in Drilling	Left in Well	Packers
Size			Kind of Packer
16			
13			
10	20	20	Size of
8 1/4	255	255	
6 5/8	845	845	Depth set
5 3/16 4"	1000	1000	
3			Perf. top
2			Perf. bottom
Liners Used			Perf. top
			Perf. bottom

CASING CEMENTED \_\_\_\_\_ SIZE \_\_\_\_\_ No. Ft. \_\_\_\_\_ Date \_\_\_\_\_

COAL WAS ENCOUNTERED AT no coal FEET \_\_\_\_\_ INCHES \_\_\_\_\_  
FEET \_\_\_\_\_ INCHES FEET \_\_\_\_\_ INCHES  
FEET \_\_\_\_\_ INCHES FEET \_\_\_\_\_ INCHES

Formation	Color	Hard or Soft	Top	Bottom	Oil, Gas or Water	Depth Found	Remarks
Big Injun Sand			873	997	Gas	988-994	
Total Depth	1000'						

9



MAR 28 1937