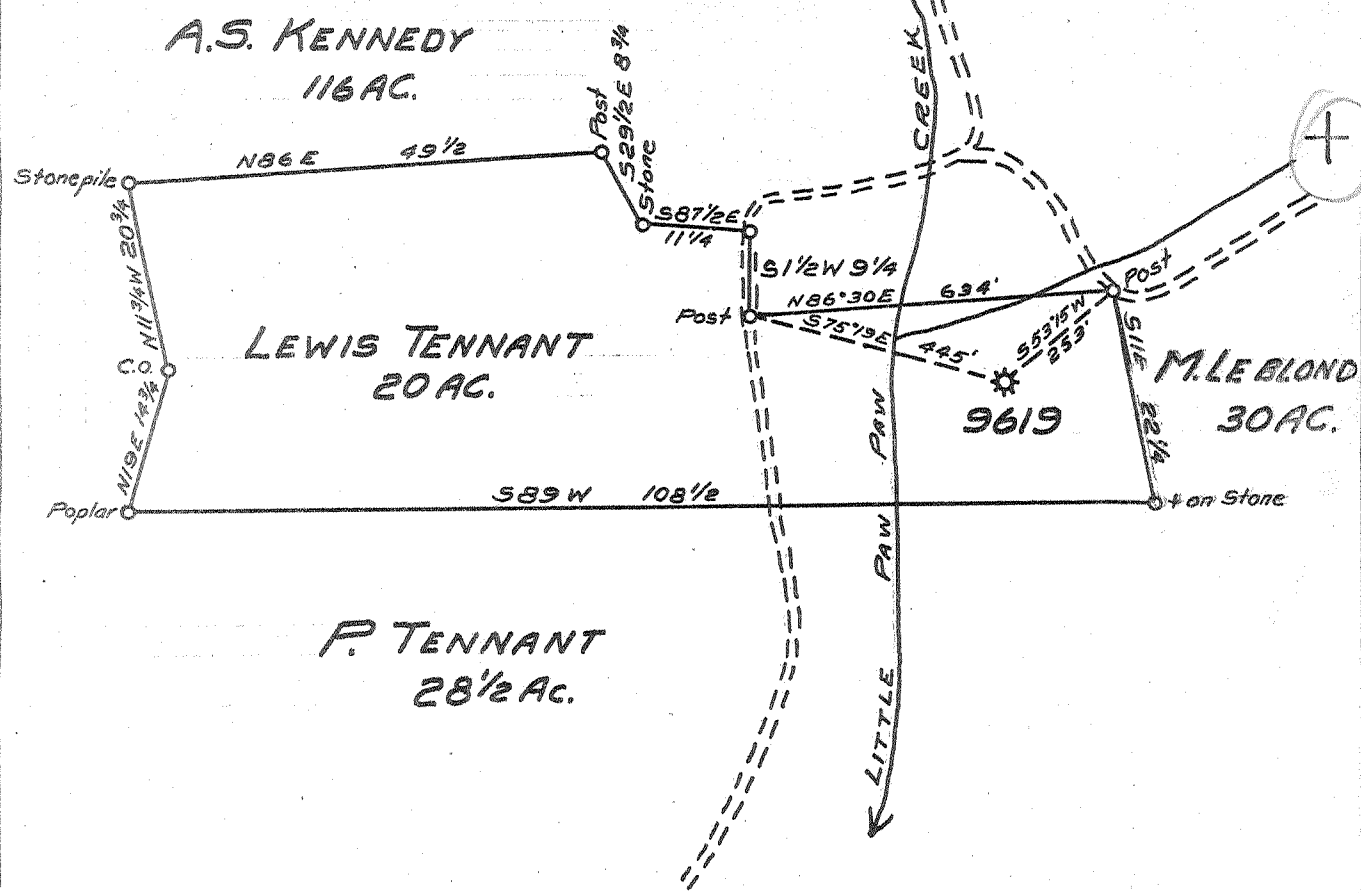


Latitude 39° 40'

Longitude 80° 10'



H.125  
O.19W

O.2 W  
Y.2 Q

JUL 20 1953

MAP SHT. 16 N10 E 25 F.B. 1080 P. 29

New Location...   
Drill Deeper...   
Abandonment...

Company HOPE NATURAL GAS CO.  
 Address CLARKSBURG W.VA.  
 Farm LEWIS TENNANT  
 Tract \_\_\_\_\_ Acres 20 Lease No. 61918  
 Well (Farm) No. \_\_\_\_\_ Serial No. 9619  
 Elevation (Spirit Level) 1023  
 Quadrangle BLACKVILLE  
 County MARION District PAW PAW  
 Engineer Guy M. Bradley  
 Engineer's Registration No. 2425  
 File No. \_\_\_\_\_ Drawing No. \_\_\_\_\_  
 Date 6-23-53 Scale 1" = 20 P.

STATE OF WEST VIRGINIA  
DEPARTMENT OF MINES  
OIL AND GAS DIVISION  
CHARLESTON

WELL LOCATION MAP  
FILE NO. MAR-793-A

+ Denotes location of well on United States Topographic Maps, scale 1 to 62,500, latitude and longitude lines being represented by border lines as shown.

- Denotes one inch spaces on border line of original tracing.

LEWIS TENNANT 25' - HOPE N.G. CO. - MAR-793-A



STATE OF WEST VIRGINIA  
DEPARTMENT OF MINES  
OIL AND GAS DIVISION

896

WELL RECORD

Permit No. 793 A Oil or Gas Well \_\_\_\_\_ (KIND)

Company Hope Natural Gas  
Address 445 West Main St. Clarksburg, W. Va.  
Farm Lewis Tennant Acres 20  
Location (waters) \_\_\_\_\_  
Well No. 9619 Elev. 1023  
District Paw Paw County Marion  
The surface of tract is owned in fee by \_\_\_\_\_  
Address \_\_\_\_\_  
Mineral rights are owned by \_\_\_\_\_  
Address \_\_\_\_\_  
Drilling commenced October 12, 1914  
Drilling completed December 29, 1914  
Date Shot No Record From \_\_\_\_\_ To \_\_\_\_\_  
With \_\_\_\_\_  
Open Flow \_\_\_\_\_ /10ths Water in \_\_\_\_\_ Inch  
\_\_\_\_\_ /10ths Merc. in \_\_\_\_\_ Inch  
Volume \_\_\_\_\_ Cu. Ft.  
Rock Pressure \_\_\_\_\_ lbs. \_\_\_\_\_ hrs.  
Oil \_\_\_\_\_ bbls., 1st 24 hrs.  
Fresh water None recorded feet \_\_\_\_\_ feet  
Salt water None recorded feet \_\_\_\_\_ feet

Casing and Tubing	Used in Drilling	Left in Well	Packers
Size			
16			Kind of Packer
13			
10	394'	Pulled	Size of
8 1/4	1255'	Pulled	
6 5/8	1650'	1650'	Depth set
5 3/16	2567'	Pulled ?	
3			Perf. top
2	2943'	2943'	Perf. bottom
Liners Used			Perf. top
			Perf. bottom

CASING CEMENTED Not SIZE \_\_\_\_\_ No. Ft. \_\_\_\_\_ Date \_\_\_\_\_

COAL WAS ENCOUNTERED AT 290 FEET 72 INCHES  
\_\_\_\_\_ FEET 384 INCHES 108 FEET \_\_\_\_\_ INCHES  
\_\_\_\_\_ FEET \_\_\_\_\_ INCHES \_\_\_\_\_ FEET \_\_\_\_\_ INCHES

Formation	Color	Hard or Soft	Top	Bottom	Oil, Gas or Water	Depth Found	Remarks
Mapletown Coal			290	296			
Pittsburgh Coal			384	393			
Little Dunkard			765	805	Gas	785	
Gas Sand			1150	1190			
1st Salt			1255	1400			
Little Lime			1580	1605			
Pencil Cave			1605	1610			
Big Lime			1610	1666			
Big Injun			1666	1811	Gas	1680 S L	
Fifty Ft.			2212	2277			
Thirty Ft.			2292	2352			
Gordon Stray			2367	2387	Gas	2367	
Gordon Sand			2478	2500			
4th Sand			2555	2573			
5th Sand			2736	2756	Gas	2746	
Total Depth				2943'			

