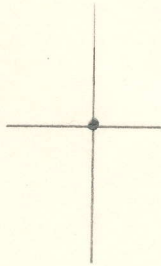


LATITUDE 39 30



1.075  
2.13w

LONGITUDE 80 17 30

7'5 OGIS topo location

7.5' loc \_\_\_\_\_  
\_\_\_\_\_

15' loc \_\_\_\_\_  
(calc.) \_\_\_\_\_

Company \_\_\_\_\_

Farm WYMONA ARNETT

Quad SHINNSTON

County MARION

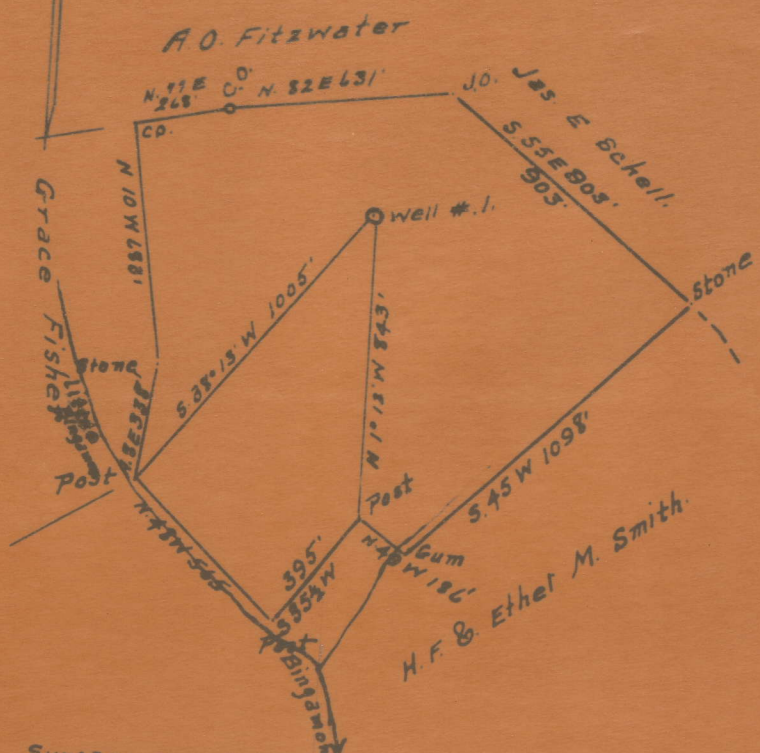
District LINCOLN

WELL LOCATION MAP

File No. 30 692

Latitude 39° 30'

Longitude 80° 20'



Surface owned by Grace Fisher  
 R. #. 4 Mannington, W. Va.  
 Coal owned by Rochester & Pittsburgh Coal Co  
 Indiana, Pa.

- New Location
- Drill Deeper
- Abandonment

Company John Lawlis  
 Address 401 Jefferson St. Mannington W. Va.  
 Farm Wynona Arnett  
 Tract 1 Acres 35 Lease No. \_\_\_\_\_  
 Well (Farm) No. 1

STATE OF WEST VIRGINIA  
 DEPARTMENT OF MINES  
 OIL AND GAS DIVISION  
 CHARLESTON

WYNONA ARNETT NO. 1 WELL.

692A

Lincoln District, Marion County, W. Va.  
 By John V. Lewis, 401 Jefferson St., Mannington, W. Va.  
 Abandoned under permit Mar-.....-A?  
 On.....acres.

Elevation, .....' L.  
 No record of date of completion, etc.  
 10" casing, 754'; 8" casing, 2047'; 6" casing, 2251'.  
 Oil well. Record to Dept. of Mines stamped Jan. 18, 1951.  
 Record to RCF from Mrs. Griffith June 28, 1951. Old File No. 787.

	Top.	Bottom.
Pittsburgh Coal	630	638
Dunkard Sand	1187	1272
1st Salt Sand	1502	1548
2nd Salt Sand	1698	1792
Big Line	2047	2111
Big Injun Sand (gas, 2116-2120')	2111	2229
Fifty-foot Sand	2659	2733
Gordon Sand (oil, 2957')	2954	2970
Total depth		2970



STATE OF WEST VIRGINIA  
DEPARTMENT OF MINES  
OIL AND GAS DIVISION

757

Permit No. MAR-692-A Oil or Gas Well X (KIND)

Company John V. Lawlis  
Address 401 Jefferson Street  
Mannington, W. Va.  
Farm Wynona Arnett Acres \_\_\_\_\_  
Location (waters) \_\_\_\_\_  
Well No. 1 Elev. \_\_\_\_\_  
District Lincoln County Marion  
The surface of tract is owned in fee by \_\_\_\_\_  
Address \_\_\_\_\_  
Mineral rights are owned by \_\_\_\_\_  
Address \_\_\_\_\_  
Drilling commenced No record  
Drilling completed No Record  
Date Shot \_\_\_\_\_ From \_\_\_\_\_ To \_\_\_\_\_  
With \_\_\_\_\_  
Open Flow \_\_\_\_\_ /10ths Water in \_\_\_\_\_ Inch  
\_\_\_\_\_ /10ths Merc. in \_\_\_\_\_ Inch  
Volume \_\_\_\_\_ Cu. Ft.  
Rock Pressure \_\_\_\_\_ lbs. \_\_\_\_\_ hrs.  
Oil \_\_\_\_\_ bbls., 1st 24 hrs.  
Fresh water \_\_\_\_\_ feet \_\_\_\_\_ feet  
Salt water \_\_\_\_\_ feet \_\_\_\_\_ feet

Casing and Tubing	Used in Drilling	Left in Well	Packers
Size			
16			Kind of Packer
18			
10	754'		Size of
8 1/4	2047'		
6 5/8	2951'		Depth set
5 3/16			
3			Perf. top
2			Perf. bottom
Liners Used			Perf. top
			Perf. bottom

CASING CEMENTED \_\_\_\_\_ SIZE \_\_\_\_\_ No. Ft. \_\_\_\_\_ Date \_\_\_\_\_  
COAL WAS ENCOUNTERED AT \_\_\_\_\_ FEET \_\_\_\_\_ INCHES  
\_\_\_\_\_ FEET \_\_\_\_\_ INCHES FEET \_\_\_\_\_ INCHES  
\_\_\_\_\_ FEET \_\_\_\_\_ INCHES FEET \_\_\_\_\_ INCHES

Formation	Color	Hard or Soft	Top	Bottom	Oil, Gas or Water	Depth Found	Remarks
Pittsburgh Coal			630	638			
Dunkard Sand			1187	1972			
1st. Salt Sand			1502	1548			
2nd. Salt Sand			1698	1792			
Big Lime			2047	2111			
Big Injun			2111	2229	Gas	2116- 2120'	
Gxxx							
Fifty Foot			2659	2733			
Gordon			2954	2970	Oil	2957	
		Total Depth		2970			

