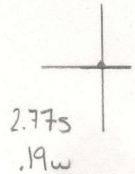


Latitude

Longitude



Topo Location

7.5' Loc. _____ 15' Loc. _____
 _____ (calc.) _____

Company _____

Farm _____

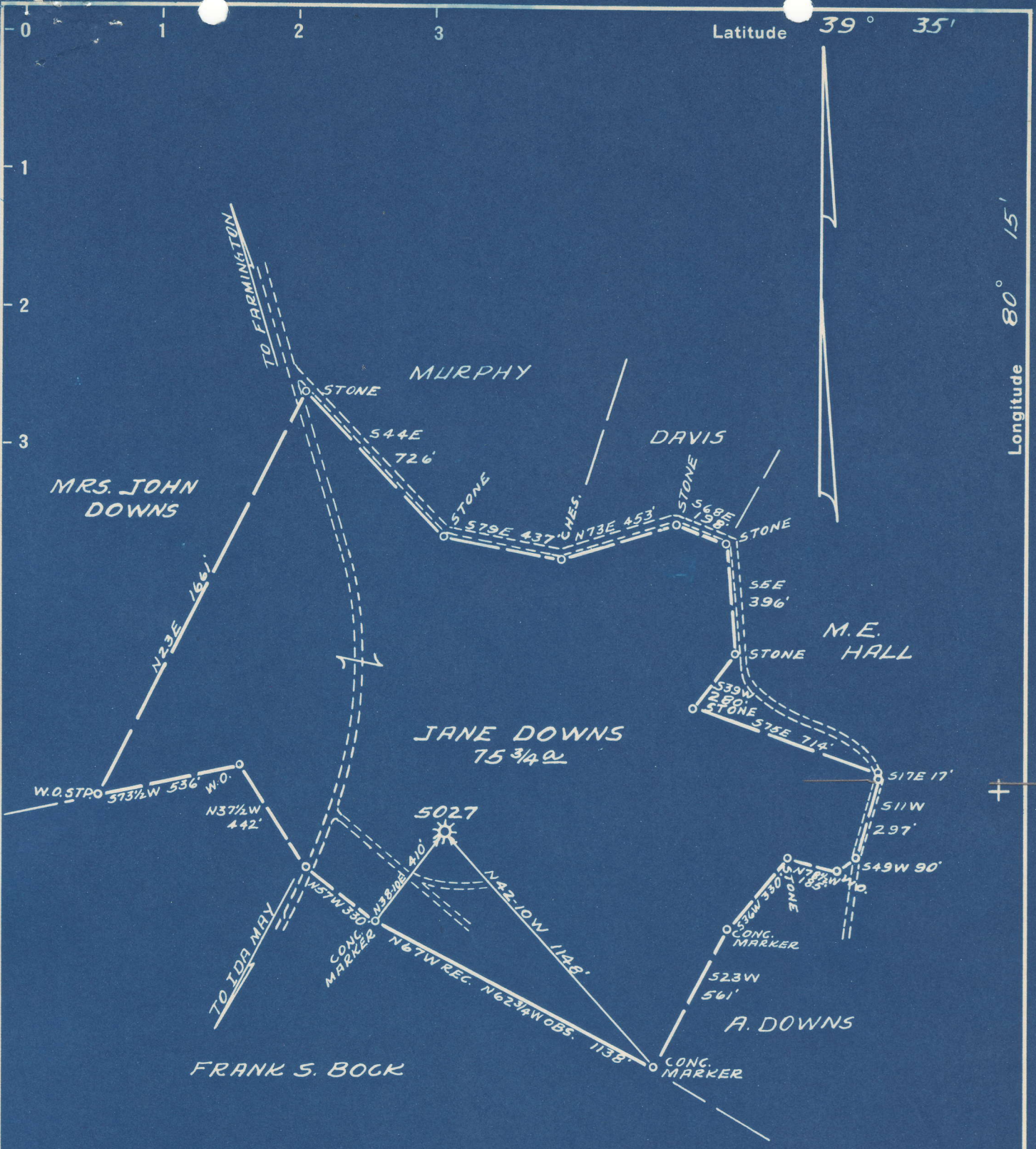
15' Quad _____
(sec.)

7.5' Quad Mammington

District Lincoln

WELL LOCATION PLAT

County 049 Permit 30685



5.55 S
0.19 W

S 5.67
W 0.19

New Location...
 Drill Deeper.....
 Abandonment.....

Company PITTSBURGH & W.VA. GAS CO.
 Address CLARKSBURG, W.VA.
 Farm JANE DOWNS
 Tract _____ Acres 76 Lease No. 6507
 Well (Farm) No. ONE Serial No. 5027
 Elevation (Spirit Level) 1226'
 Quadrangle MANNINGTON S.E. 44
 County MARION District LINCOLN
 Engineer Kenneth B. Moore
 Approved By J. H. Bugden
 Engineer's Registration No. 764
 File No. D-32 P.137 Drawing No. _____
 Date 10-31-50 Scale 1" = 500'

STATE OF WEST VIRGINIA
 DEPARTMENT OF MINES
 OIL AND GAS DIVISION
 CHARLESTON

WELL LOCATION MAP
 FILE NO. MAR-685-A

+ Denotes location of well on United States Topographic Maps, scale 1 to 62,500, latitude and longitude lines being represented by border lines as shown.
 - Denotes one inch spaces on border line of original tracing.

Lincoln District, Marion County, W. Va.
 By Pittsburgh & W. Va. Gas Co., Clarksburg, W. Va.
 Abandoned under permit No.-17
 On 76 acres; Farmington 2/2 E. 2-2.
 Elevation, 1226' L.
 Surface owned by Bethlehem Collieries Corp., Barrackville, W. Va., and
 minerals by J. Albert Downs, atty.-in-fact for Belle Jones,
 Farmington, W. Va.
 Drilling commenced Nov. 13, 1912; completed Dec. 17, 1912.
 10" casing, 574' cemented; 8 1/2", 1562'; 6 1/2", 1852'; all left in.
 Coal was encountered at 60-63, 135-139, 427-432, and 540-548'.
 Gas well. Record to Dept. of Mines dated Oct. 28, 1941. (7)
 Stamped by Dept. of Mines Nov. 16, 1950.
 Record to 207 from Mrs. Griffith June 24, 1951. Old File No. 774.

	Top.	Bottom.
Clay, yellow, soft	0	20
Slate, dark, soft	20	60
Native coal, black, soft	60	63
Slate, dark, soft	63	73
Bluff Sand, white, hard	73	135
Fairview (Waynesburg) Coal, black, soft	135	139
Lime, white, hard	139	150
Slate, dark, soft	150	155
Sand, white, hard	155	204
Lime, dark, hard	204	219
Slate and shells, dark, soft	219	259
Lime, dark, hard	259	270
Slate and shells, dark, soft	270	290
Lime, dark, hard	290	302
Slate, dark, soft	302	305
Lime, gray, hard	305	314
Slate and shells, dark, soft	314	320
Lime, dark, hard	320	325
Slate, dark, soft	325	333
Lime, dark, hard	333	417
Slate, dark, soft	417	427
Mapletown (Sewickley) Coal, black, soft	427	432
Lime, white, hard	432	520
Slate, dark, soft	520	540
Pittsburgh Coal, black, soft	540	548
Lime, white, hard	548	574
Slate and shells, dark, close	574	719
Murphy Sand, white, hard	719	754
Slate and shells, dark, close	754	825
Lime, dark, hard	825	840
Slate and shells, red, hard & close	840	1030
Big Buckard Sand, white, hard	1030	1050
Slate, red, soft	1050	1105
Sand, dark, hard	1105	1135
Slate, red, soft	1135	1155
Gas Sand, white, hard	1155	1245
Slate and shells, dark, close	1245	1300
1st Salt Sand, white, hard	1300	1325
Slate, dark, soft	1325	1370
2nd Salt Sand, white, hard	1370	1425

(OVER)

JAMES DOWNS NO. 5027 WELL (Continued).

	Top.	Bottom.
Slate, dark, soft	1475	- 1470
3rd Salt Sand, white, hard	1470	- 1500
2nd Salt Sand, dark, hard	1500	- 1558
Slate and shells, dark, close	1558	- 1625
Slate, red, soft	1625	- 1660
Maxton Sand, white, hard	1660	- 1700
Slate, red, soft	1700	- 1738
Little Lino, white, hard	1738	- 1745
Slate, red, soft	1745	- 1795
Big Lino, white, hard	1795	- 1900
Big Injun Sand, white, hard (gas, 1909-1912'; gas, 2009')	1900	- 2020
Slate, dark, soft	2020	- 2035
Sand, yellow, hard	2035	- 2060
Lino, white, hard	2060	- 2080
Slate, dark, soft	2080	- 2150
Sand, white, hard	2150	- 2176
Slate, dark, soft	2176	- 2179
Lino, white, hard	2179	- 2215
Slate, dark, soft	2215	- 2223
Lino, white, hard	2223	- 2240
Slate, white, soft	2240	- 2260
Lino, white, hard	2260	- 2298
Slate and shells, dark, hard	2298	- 2324
Lino, white, hard	2324	- 2342
Slate, dark, soft	2342	- 2350
Lino, white, hard	2350	- 2372
Slate, dark, soft	2372	- 2398
Lino, white, hard	2398	- 2405
Gantz Sand, white, hard	2405	- 2463
Slate, white, soft	2463	- 2475
Sand, white, hard	2475	- 2500
Slate, dark, soft	2500	- 2506
Fifty-foot Sand, white, hard	2506	- 2547
Red rock, soft	2547	- 2550
Slate, white, soft	2550	- 2565
Thirty-foot Sand, white, hard	2565	- 2640
Red rock, soft	2640	- 2658
Lino, white, hard	2658	- 2680
Slate, white, soft	2680	- 2729
Gordon Stray Sand, white, hard	2729	- 2737
Slate, white, soft	2737	- 2760
Gordon Sand, white, soft	2760	- 2768
Slate, white, soft	2768	- 2780
4th Sand, white, soft	2780	- 2820
Slate, white, soft	2820	- 2854
Sand, white, hard	2854	- 2864
Slate, white, soft	2864	- 2920
5th Sand (gas, 2922-24'; gas, 2938-42')	2920	- 2948
Slate, white, soft	2948	- 3000
Total depth		3000



STATE OF WEST VIRGINIA
DEPARTMENT OF MINES
OIL AND GAS DIVISION

774

Ab 685-A

WELL RECORD

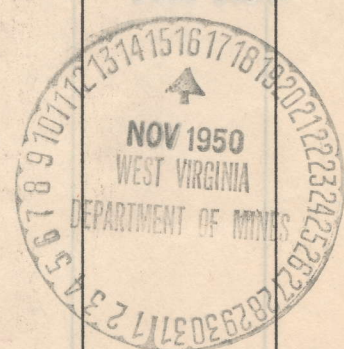
Oil or Gas Well "GAS"
(KIND)

Permit No. _____
Company Pittsburgh West Va Gas Company
Address Clarksburg, West Va.
Farm Jane Downs Acres 76
Location (waters) Mannington S/E. 4-4
Well No. 5027 Elev. 1226'
District Lincoln County Marion
The surface of tract is owned in fee by Bethlehem Colliers Corp. Address Barrackville, W. Va.
Mineral rights are owned by J. Albert Downs-Atty-in-Fact for Belle Jones. Address Farmington, W. Va.
Drilling commenced November 13, 1912
Drilling completed December 17, 1912
Date Shot _____ From _____ To _____
With _____
Open Flow _____ /10ths Water in _____ Inch
_____ /10ths Merc. in _____ Inch
Volume _____ Cu. Ft.
Rock Pressure _____ lbs. _____ hrs.
Oil _____ bbls., 1st 24 hrs.
Fresh water _____ feet
Salt water _____ feet

Casing and Tubing	Used in Drilling	Left in Well	Packers
Size			
16			Kind of Packer
13			
10 (Cemented)	574'	574'	Size of
8 1/4	1562'	1562'	
6 5/8	1852'	1852'	Depth set
5 3/16			
3			Perf. top
2			Perf. bottom
Liners Used			Perf. top
			Perf. bottom

CASING CEMENTED 10" SIZE 574' No. Ft. _____ Date _____
COAL WAS ENCOUNTERED AT 60 FEET 36 INCHES
135 FEET 48 INCHES 427 FEET 60 INCHES
540 FEET 96 INCHES _____ FEET _____ INCHES

Formation	Color	Hard or Soft	Top	Bottom	Oil, Gas or Water	Depth Found	Remarks
Clay	Yellow	Soft	0	20			
Slate	Dark	"	20	60			
Native Coal	Black	"	60	63			
Slate	Dark	"	63	78			
Bluff Sand	White	Hard	78	135			
Fairview Coal	Black	Soft	135	139			
Line	White	Hard	139	150			
Slate	Dark	Soft	150	155			
Sand	White	Hard	155	204			
Line	Dark	"	204	219			
Slate&Shells	"	Soft	219	259			
Line	"	Hard	259	270			
Slate&Shells	"	Soft	270	290			
Line	"	Hard	290	302			
Slate	"	Soft	302	305			
Line	Gray	Hard	305	314			
Slate&Shells	Dark	Soft	314	320			
Line	"	Hard	320	325			
Slate	"	Soft	325	333			
Line	"	Hard	333	417			
Slate	"	Soft	417	427			
M.T. Coal	Black	"	427	432			
Line	White	Hard	432	520			
Slate	Dark	Soft	520	540			
Pgh. Coal	Black	"	540	548			
Line	White	Hard	548	574			
Slate & Shells	Dark	Close	574	719			
Murphy Sand	White	Hard	719	754			
Slate&Shells	Dark	Close	754	825			
Line	"	Hard	825	840			
Slate&Shells	Red	Hard&Close	840	1030			
Big Dunkard	White	Hard	1030	1050			
Slate	Red	Soft	1050	1105			
Sand	Dark	Hard	1105	1135			
Slate	Red	Soft	1135	1155			
Gas Sand	White	Hard	1155	1245			
Slate&Shells	Dark	Close	1245	1300			
1st. Salt Sand	White	Hard	1300	1325			



Formation	Color	Hard or Soft	Top	Bottom	Oil, Gas or Water	Depth Found	Remarks
Slate	Dark	Soft	1325	1370			
2nd. Salt Sand	White	Hard	1370	1425			
Slate	Dark	Soft	1425	1470			
3rd. Salt Sand	White	Hard	1470	1500			
3rd. " "	Dark	"	1500	1558			
Slate&Shells	"	Close	1558	1625			
Slate	Red	Soft	1625	1660			
Maxon Sand	White	Hard	1660	1700			
Slate	Red	Soft	1700	1738			
Little Lime	White	Hard	1738	1745			
Slate	Red	Soft	1745	1795			
Big Lime	White	Hard	1795	1900			
Big Injun	"	"	1900	2020	Gas	1903-1912'	
Slate	Dark	Soft	2020	2035	Gas	2003'	
Sand	Yellow	Hard	2035	2060			
Lime	White	"	2060	2080			
Slate	Dark	Soft	2080	2150			
Sand	White	Hard	2150	2176			
Slate	Dark	Soft	2176	2179			
Lime	White	Hard	2179	2215			
Slate	Dark	Soft	2215	2223			
Lime	White	Hard	2223	2240			
Slate	"	Soft	2240	2260			
Lime	"	Hard	2260	2298			
Slate&Shells	Dark	"	2298	2324			
Lime	White	"	2324	2342			
Slate	Dark	Soft	2342	2350			
Lime	White	Hard	2350	2372			
Slate	Dark	Soft	2372	2398			
Lime	White	Hard	2398	2405			
Gantz Sand	"	"	2405	2463			
Slate	"	Soft	2463	2475			
Sand	"	Hard	2475	2500			
Slate	Dark	Soft	2500	2506			
Fifty Foot Sand	White	Hard	2506	2517			
Red Rock	Red	Soft	2517	2550			
Slate	White	"	2550	2565			
Thirty Foot Sand	"	Hard	2565	2640			
Red Rock	Red	Soft	2640	2658			
Lime	White	Hard	2658	2680			
Slate	"	Soft	2680	2729			
Gordon Stray	"	Hard	2729	2737			
Slate	"	Soft	2737	2760			
Gordon Sand	"	"	2760	2768			
Slate	"	"	2768	2780			
4th. Sand	"	"	2780	2820			
Slate	"	"	2820	2854			
Sand	"	Hard	2854	2864			
Slate	"	Soft	2864	2920			
5th. Sand	"	"	2920	2948	Gas	2922-24'	
Slate	"	"	2948	3000	Gas	2938-42'	
Total depth				3000			

October 28, 1941

Date _____, 19____

PITTSBURGH & WEST VA GAS COMPANY.

APPROVED _____

Owner

By W. M. [Signature]
(Title)

COMPANY 049-30685

FORM: 639-14263

Record of Well No. 5027 Located on Jane Powers et al Farm Plotter 19 12
Lincoln District Marion County West Va State
 Division V. District No. Drilled under well Order 327
 Rig built by John Craig Began Oct 30 19 12 Completed Nov 21 19 12
Drilling Dept. Phys. Dept. & Chem. Dept. Began Aug 11 19 20 Completed Aug 26 19 20
 Well drilled by S. W. McCall Began Nov 1st 19 12 Completed Oct 17 19 12
 Depth of Well 2020 feet Size of Hole 6 5/8 Producing Gas
3000 2060 " Elev. 1226 G.L.

CASED WITH			REMARKS
AMOUNT	SIZE	KIND	
16'	13"	Wood	10' casing to be cemented through Gpl. coal
574'	10"	Raw	
1562'	8 1/2"	"	
1852'	6 5/8"	"	
2021'	3"	"	Obtained 91 1/2' 2000 ft steel
3012'	3"	Old	21 ft Damaged July 25-1930.

COAL VEINS Mapletown 429 540
432 Gpl. 540

FORMATION	COLOR	OPEN OR CLOSE HARD OR SOFT	TOP	BOTTOM	REMARKS GAS-OIL-WATER (THICKNESS OF PAY)
Mapletown					
Big Orchard			1030	1050	
1st Salt Sand			1300	1325	
2nd Salt Sand			1370	1425	
3rd "			1470	1558	
Little Linn			1738	1745	
Big Linn			1795	1900	
Big Linn			1900	2020	Gas 1903, 1912
Coal Dept			2020		" 1993.
Drilling deeper					
Hard Sand			2405	2463	
1st Red Sand			2506	2527	
2nd Red Sand			2565	2640	
3rd Red Sand			2760	2768	
Fourth "			2780	2820	
Fifth "			2920	2928	Gas 2920-2938 - 3.021" 4-7
Total Dept				3000	Gas 2924-2942
				3000	Well Plus From 2020
				2020	To 2060
			New Ftg	980	

(64) Farmington

FORMATIONS
FORM: O 32-5170

Well # 5027 Junction

NAME	TOP	BOTTOM	OIL	GAS	WATER	REMARKS
Clay		20				
Slate	20	60				
Native Coal	60	63				
Slate	63	78				
Bluff Sand	78	125				
Narvicum Coal	125	139				
Lime	139	150				
Slate	150	165				
Sand	165	204				
Lime	204	219				
Slate + Shells	219	229				
Lime	229	270				
Slate + Shells	270	302				
Slate	302	305				
Lime	305	314				
Slate + Shells	314	320				
Lime	320	325				
Slate	325	333				
Lime	333	419				
Slate	419	429				
Mapletown Coal	429	432				
Lime	432	520				
Slate	520	520				
App. Coal	520	528				
Lime	528	574				
Slate + Shells	574	719				
Murphy Sand	719	754				
Slate + Shells	754	825				
Lime	825	840				
Slate + Shells	840	1030				
Big Denbord	1030	1100				
Slate	1100	1105				
Sand	1105	1135				
Slate	1135	1155				
Gas Sand	1155	1245				
Slate + Shells	1245	1300				
1st. Salt Sand	1300	1325				
Slate	1325	1370				
2nd. Salt Sand	1370	1425				
Slate	1425	1470				
3rd. Salt Sand	1470	1525				
Slate + Shells	1525	1625				
Slate	1625	1660				
Mason Sand	1660	1700				
Slate	1700	1738				
Little Lime	1738	1745				
Slate	1745	1795		1903		
Big Lime	1795	1900		1912		
Big Denbord	1900	2020		2003		
Well Stop		2020				
Drilling Deep						
Lime	2020	2035				
Sand	2035	2060				
Lime	2060	2080				
Slate	2080	2150				
Sand	2150	2176				
Slate	2176	2179				
Limestone	2179	2215				
Slate	2215	2223				
Limestone	2223	2240				
Slate	2240	2260				
Limestone	2260	2298				
Shells and Slate	2298	2324				

FORMATIONS
FORM: O 32-5170

well # 5829 June Down

NAME	TOP	BOTTOM	OIL	GAS	WATER	REMARKS
Limestone	2324	2340				
Slate	2340	2358				
Limestone	2358	2372				
Slate	2372	2398				
Limestone	2398	2405				
Heavy Sand	2405	2463				
Slate	2463	2475				
Sand	2475	2500				
Slate	2500	2526				
Light Root Sand	2526	2529				
Light Rock	2529	2558				
Slate	2558	2565				
Heavy Root Sand	2565	2640				
Light Rock	2640	2658				
Sand	2658	2680				
Slate	2680	2729				Steel Line at 2680
Window Sand	2729	2737				
Slate	2737	2760				
Window Sand	2760	2768				
Slate	2768	2780				
Window Sand	2780	2820				
Slate	2820	2804				
Sand	2804	2804				
Slate	2864	2920				
Light Sand	2920	2948		2920-29 2938-42		
Slate	2948	3000				Steel Line
Total Depth		3000				