

Latitude

.08s

1.66w

Longitude

Topo Location

7.5' Loc. _____ 15' Loc. _____
_____ (calc.) _____

Company Pitts + WV Gas

Farm Fred Bellingson #1

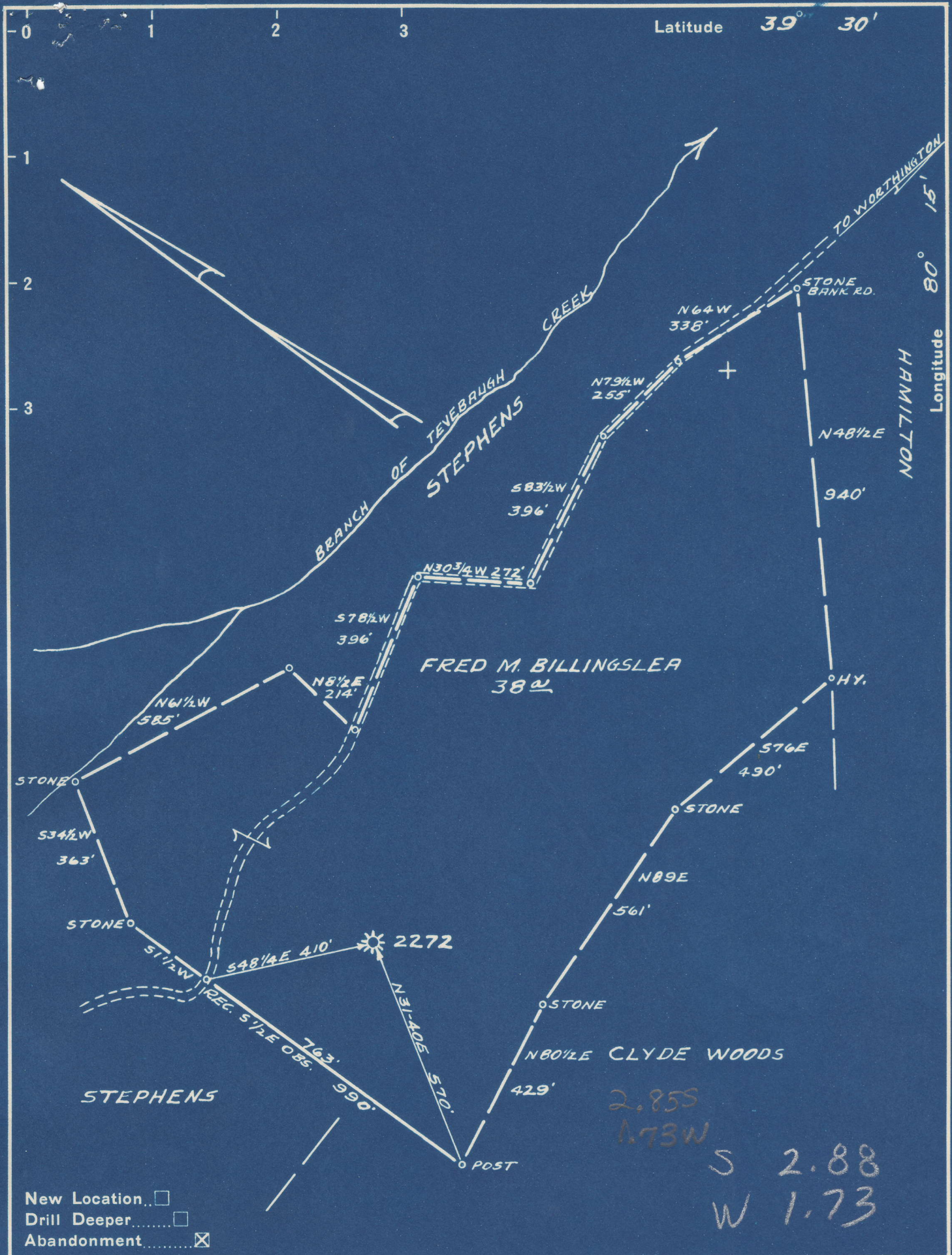
15' Quad _____
(sec.)

7.5' Quad Shinnston

District Lincoln

WELL LOCATION PLAT

County 049 **Permit** 30671



Company PITTSBURGH & W.VA. GAS CO.

Address CLARKSBURG, W.VA.

Farm FRED M. BILLINGSLEA

Tract _____ Acres 38 Lease No. 7254

Well (Farm) No. ONE Serial No. 2272

Elevation (Spirit Level) 1265'

Quadrangle CLARKSBURG N.E. 23

County MARION District LINCOLN

Engineer Kenneth B. Moore

Engineer's Registration No. 764

File No. VOL. 165 P. 24 Drawing No. _____

Date JULY 31, 1950 Scale 1" = 300'

STATE OF WEST VIRGINIA
 DEPARTMENT OF MINES
 OIL AND GAS DIVISION
 CHARLESTON

WELL LOCATION MAP

FILE NO. MAR-671-A

+ Denotes location of well on United States Topographic Maps, scale 1 to 62,500, latitude and longitude lines being represented by border lines as shown.

- Denotes one inch spaces on border line of original tracing.

Lincoln District, Marion County, W. Va.

By Pittsburgh & W. Va. Gas Co., Clarksburg, W. Va.

Abandoned under permit Mar-----A?

On 39 acres, Clarksburg N/E 2-3.

Elevation, 1265' L.

Surface owned by C. F. Sawyer, R. D. No. 1, Worthington, W. Va., and minerals by Fred M. Billingsley, Worthington, W. Va.

Drilling commenced June 26, 1909; completed Sept. 9, 1909.

10" casing, 539' (pulled); 8 1/2", 1542'; 6 3/4", 1834'.

Coal was encountered at 320-325, 400-407, and 514-522'.

Gas well. Record to Dept. of Mines dated July 26, 1950.

Record to ROT from Mrs. Griffith June 24, 1951. Old file No. 770.

| | Top. | Bottom. |
|---|------|---------|
| Clay, white, soft | 0 | 40 |
| Sand, white, hard | 40 | 140 |
| Lime, white, hard | 140 | 200 |
| Slate, dark, soft | 200 | 320 |
| Coal, dark, soft | 320 | 325 |
| Lime, white, hard | 325 | 400 |
| Mapletown (Sewickley) Coal, black, soft | 400 | 407 |
| Lime, white, soft | 407 | 514 |
| Pittsburgh Coal, black, soft | 514 | 522 |
| Lime, white, hard | 522 | 622 |
| Red rock, soft | 622 | 650 |
| Slate and lime, dark, soft | 650 | 850 |
| Little Dunkard Sand, white, soft | 850 | 880 |
| Slate and lime, dark, soft | 880 | 1000 |
| Big Dunkard Sand, white, soft | 1000 | 1050 |
| Slate, dark, soft | 1050 | 1070 |
| Gas Sand, white, hard | 1070 | 1170 |
| Slate and lime, dark, soft | 1170 | 1317 |
| Salt Sand, dark, hard | 1317 | 1530 |
| Lime, dark, hard | 1530 | 1630 |
| Slate, dark, soft | 1630 | 1655 |
| Lime, dark, hard | 1655 | 1665 |
| Red rock, soft | 1665 | 1700 |
| Slate, dark, soft | 1700 | 1785 |
| Little Lime, white, hard | 1785 | 1825 |
| Slate, dark, soft | 1825 | 1830 |
| Big Lime, white, hard | 1830 | 1900 |
| Big Injun Sand, white, hard | 1900 | 2000 |
| Slate and shells, hard and soft | 2000 | 2417 |
| 50-Ft. Sand, white, hard | 2417 | 2440 |
| Slate, dark, soft | 2440 | 2445 |
| 30-Ft. Sand, white, hard | 2445 | 2475 |
| Slate and shells, dark, soft | 2475 | 2702 |
| Stray Sand, dark, hard | 2702 | 2725 |
| Slate, dark, soft | 2725 | 2735 |
| Gordon Sand, dark, hard | 2735 | 2755 |
| Slate, dark, soft | 2755 | 2759 |
| 4th Sand, dark, hard | 2759 | 2777 |
| Slate, dark, soft | 2777 | 2782 |
| Lime, white, hard | 2782 | 2804 |
| Slate, dark, soft | 2804 | 2850 |

(OVER)

| | Top. | Bottom. |
|-----------------------------------|------|---------|
| Sand sholl, dark, hard | 2850 | - 2854 |
| Slate, dark, soft | 2854 | - 2862 |
| 5th Sand, dark, hard (gas, 2878*) | 2862 | - 2890 |
| Slate, white, soft | 2890 | - 2912 |
| Total depth | | 2912 |

| Top | Bottom | Description |
|------|--------|-----------------------------------|
| 2850 | 2854 | Sand sholl, dark, hard |
| 2854 | 2862 | Slate, dark, soft |
| 2862 | 2890 | 5th Sand, dark, hard (gas, 2878*) |
| 2890 | 2912 | Slate, white, soft |
| 2912 | 2912 | Total depth |



STATE OF WEST VIRGINIA
DEPARTMENT OF MINES
OIL AND GAS DIVISION

770

WELL RECORD

Permit No. 671-A Oil or Gas Well "GAS"
(KIND)

Company Pittsburgh & West Va Gas Company
Address Clarksburg, West Va.
Farm Fred M. Billingslea Acres 39
Location (waters) Clarksburg N/E. 2-3
Well No. 2272 Elev. 1265'
District Lincoln County Marion
The surface of tract is owned in fee by C. F. Sawyer
R.D.#1 1 Address Worthington, W.Va.
Mineral rights are owned by Fred M. Billingslea
Address Worthington, W.Va.

Drilling commenced June 26th, 1909
Drilling completed September 9th, 1909
Date Shot From To
With
Open Flow /10ths Water in Inch
/10ths Merc. in Inch
Volume Cu. Ft.
Rock Pressure lbs. hrs.
Oil bbls., 1st 24 hrs.
Fresh water feet feet
Salt water feet feet

| Casing and Tubing | Used in Drilling | Left in Well | Packers |
|-------------------|------------------|--------------|----------------|
| Size | | | Kind of Packer |
| 16 | | | |
| 13 | | | |
| 10 | 539' | Pulled. | Size of |
| 8 1/4 | 1542' | 1542' | |
| 6 5/8 | 1834' | 1834' | Depth set |
| 5 3/16 | | | |
| 3 | | | Perf. top |
| 2 | | | Perf. bottom |
| Liners Used | | | Perf. top |
| | | | Perf. bottom |

CASING CEMENTED SIZE No. Ft. Date
COAL WAS ENCOUNTERED AT 320 FEET 60 INCHES
400 FEET 84 INCHES 514 FEET 96 INCHES
FEET INCHES FEET INCHES

| Formation | Color | Hard or Soft | Top | Bottom | Oil, Gas or Water | Depth Found | Remarks |
|----------------|-------|--------------|------|--------|-------------------|-------------|---------|
| Clay | White | Soft | 0 | 40 | | | |
| Sand | " | Hard | 40 | 140 | | | |
| Lime | " | " | 140 | 200 | | | |
| Slate | Dark | Soft | 200 | 320 | | | |
| Coal | " | " | 320 | 325 | | | |
| Lime | White | Hard | 325 | 400 | | | |
| M.T.Coal | Black | Soft | 400 | 407 | | | |
| Lime | White | " | 407 | 514 | | | |
| Pgh. Coal | Black | " | 514 | 522 | | | |
| Lime | White | Hard | 522 | 622 | | | |
| Red Rock | Red | Soft | 622 | 650 | | | |
| Slate&Lime | Dark | " | 650 | 850 | | | |
| Little Dunkard | White | " | 850 | 880 | | | |
| Slate&Lime | Dark | " | 880 | 1000 | | | |
| Big Dunkard | White | " | 1000 | 1050 | | | |
| Slate | Dark | " | 1050 | 1070 | | | |
| Gas Sand | White | Hard | 1070 | 1170 | | | |
| Slate&Lime | Dark | Soft | 1170 | 1317 | | | |
| Salt Sand | " | Hard | 1317 | 1530 | | | |
| Lime | " | " | 1530 | 1630 | | | |
| Slate | " | Soft | 1630 | 1655 | | | |
| Lime | " | Hard | 1655 | 1665 | | | |
| Red Rock | Red | Soft | 1665 | 1700 | | | |
| Slate | Dark | " | 1700 | 1785 | | | |
| Little Lime | White | Hard | 1785 | 1825 | | | |
| Slate | Dark | Soft | 1825 | 1830 | | | |
| Big Lime | White | Hard | 1830 | 1900 | | | |
| Big Injun | " | " | 1900 | 2000 | | | |
| Slate&Shells | | Hard&Soft | 2000 | 2417 | | | |
| 50 Ft.Sand | White | Hard | 2417 | 2440 | | | |
| Slate | Dark | Soft | 2440 | 2445 | | | |
| 30 Ft.Sand | White | Hard | 2445 | 2475 | | | |
| Slate&Shells | Dark | Soft | 2475 | 2702 | | | |
| Stray Sand | " | Hard | 2702 | 2725 | | | |
| Slate | " | Soft | 2725 | 2735 | | | |
| Gordon Sand | " | Hard | 2735 | 2755 | | | |
| Slate | " | Soft | 2755 | 2759 | | | |
| 4th.Sand | " | Hard | 2759 | 2777 | | | |
| Slate | " | Soft | 2777 | 2782 | | | |

| Formation | Color | Hard or Soft | Top | Bottom | Oil, Gas or Water | Depth Found | Remarks |
|------------------|-------|--------------|------|--------|-------------------|-------------|---------|
| Lime | White | Hard | 2782 | 2804 | | | |
| Slate | Dark | Soft | 2804 | 2850 | | | |
| Sand Shell | " | Hard | 2850 | 2854 | | | |
| Slate | " | Soft | 2854 | 2862 | | | |
| 5th. Sand | " | Hard | 2862 | 2890 | Gas | 2878' | |
| Slate | White | Soft | 2890 | 2912 | | | |
| Total Depth..... | | | | 2912 | | | |

July 26, 1950

Date _____, 19____

PITTSBURGH & WEST VA GAS COMPANY.

APPROVED

Owner

By W. L. McMaster
(Title)

Record of Well No. 2270 Located on Fred M. Ellingler Farm April 27 1909
Lincoln District Marian County West Va State
 Division 9 District No. 11 Drilled under well Order 984
 Rig built by John Craig Began 19 Completed June 17 1909
 Well drilled by Power Bros Began June 28 1909 Completed Sept 9 1909
 Depth of Well 2912 feet Size of Hole 6 5/8 Producing Gas
 Elev. 1264 G.L.

| CASED WITH | | | REMARKS |
|------------|---------|------|-------------------------|
| AMOUNT | SIZE | KIND | |
| 16' | 13 1/2" | Wood | |
| 539' | 10" | Old | Reclaimed Sept 11-1909 |
| 1642' | 8 1/4" | New | |
| 1834' | 6 5/8" | " | |
| 2460 | 3" | " | 3" Reclaimed May 4-1916 |
| 2918 | 3" | " | |

COAL VEINS 514-522

| FORMATIONS | | | | | |
|--------------------|-------|-------------------------------|------|--------|--|
| FORMATION | COLOR | OPEN OR CLOSE HARD OR SOFT | TOP | BOTTOM | REMARKS GAS-OIL-WATER (THICKNESS OF PAY) |
| Big Round | | | 1000 | 1050 | |
| Little " | | | 850 | 880 | |
| Gas Sand | | | 1070 | 1170 | |
| Salt " | | | 1210 | 1317 | |
| " " | | | 1325 | 1530 | |
| Big Lime | | | 1830 | 1900 | |
| Big Lignite | | | 1900 | 2000 | |
| Shaly Coal | | | 2417 | 2440 | |
| Thinly Bedded | | | 2445 | 2475 | |
| Shaly Sandstone | | | 2702 | 2725 | |
| Greenish Sand | | | 2733 | | |
| Roach " | | | 2757 | 2777 | |
| Soft Sand | | | 2862 | 2890 | Gas 2800 |
| Total Depth (Note) | | | | 2918 | " 2878 |

(64) Farmington

| FIRST PRESSURE TEST IN _____ CASING | | REMARKS |
|-------------------------------------|------|--|
| 30 Sec. | lbs. | |
| 1 Min. | " | |
| 2 " | " | |
| 5 " | " | |
| 10 " | " | June 1918. $\frac{3}{10}$ W.S. = 186,840 - 105-48 hrs. |
| 15 " | " | |
| 30 " | " | |
| Rock Pressure | " in | |
| Taken | 19 | |
| By | | |

WELL TUBED AND PACKED Sept 10 1909 5-18-37
 VIZ: - 2460 ft. of 3" Tubing
 1-6 5/8 x 4" Heater Wall Cacker
 5-31-1916. 149 ft. 2918 ft. of 3" Tubing
 1-6 5/8 x 3" Spary Anchor Cacker
 9 ft. 155 ft. of Anchor. 1-3" P. & L. Collar 1/4" nipple top of Cacker
 Reclaimed 643 ft 3" Tubing
 1-6 7/8 x 3" Anchor Cacker
 5-18-37 Used 642 ft 3" Tubing
 1-6 5/8 x 3" Hook Wall P.

| FIRST PRESSURE TEST IN _____ 3" TUBING | | REMARKS |
|--|-----------------------------|---------|
| 30 Sec. | 100 lbs. 8 | |
| 1 Min. | 160 " 17 | |
| 2 " | 220 " 28 | |
| 5 " | 335 " 71 | |
| 10 " | 410 " 114 | |
| 15 " | " 191 | |
| 30 " | 460 " 204 | |
| Rock Pressure | 560 " in 2 hrs 265 - 42 hrs | |
| Taken | Sept 10 1909 May 29-1916 | |
| By | Roberts | |

May 18 1937 MATERIAL FOR THIS WELL RECEIVED FROM FOLLOWING SOURCES:
 Tubed 148 ft. - 2912' - 3" Tubing - 1-6 5/8 x 3 1/2" W. Packer Set
 at 2743' - 10 ft. 169' 7" Anchor. - 1-3" Plug Bull.
 5' 5" Perforation Top 2906' - 23' Perforation Top 2865.
 Note Neck of Packer 4 1/2 x 4"

Test after Tubing

| | | | | | | | | | |
|-----|---|---|---|----|----|----|----|----|----|
| 1/2 | 1 | 2 | 3 | 4 | 5 | 10 | 20 | 30 | 60 |
| 1 | 2 | 5 | 7 | 10 | 13 | 23 | 40 | 59 | 88 |

Rock Pressure - 105# - 13 hrs.