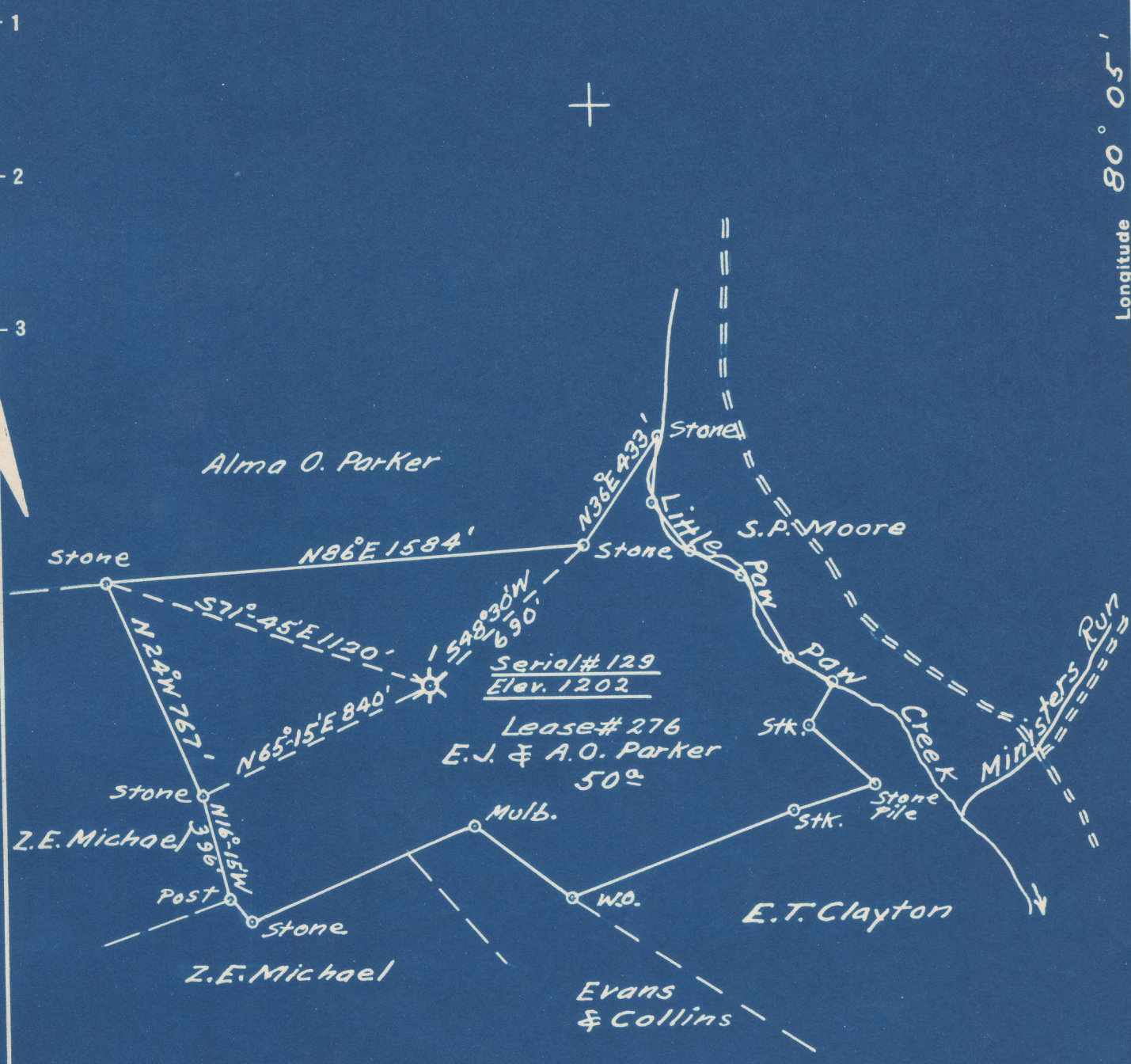


Latitude 39° 35'

Longitude 80° 05'



- New Location
- Drill Deeper
- Abandonment

1.75 S
3.53 W

S 1.76
W 3.58

Company Owens, Illinois Glass Co. Gas Dept.
 Address Box 4158 Charleston 4 W.Va.
 Farm A.O. & E.J. Parker
 Tract _____ Acres 50 Lease No. 276
 Well (Farm) No. 1 Serial No. 129
 Elevation (Spirit Level) 1202
 Quadrangle Blacksville 8 S 1.77" W 3.63"
 County Marion District Paw Paw
 Engineer T.S. Flournoy
 Engineer's Registration No. 269 SC
 File No. _____ Drawing No. _____
 Date June 2, 1950 Scale 1" = 500'

STATE OF WEST VIRGINIA
 DEPARTMENT OF MINES
 OIL AND GAS DIVISION
 CHARLESTON

WELL LOCATION MAP
 FILE NO. MAR-662-A-129

- + Denotes location of well on United States Topographic Maps, scale 1 to 62,500, latitude and longitude lines being represented by border lines as shown.
- Denotes one inch spaces on border line of original tracing.

N. J. PARKER NO. 1 (129) WELL.

662A

Pawpaw District, Marion County, W. Va.
 By Owens-Illinois Glass Co. Gas Dept., Box 4158, Charleston, 4, W. Va.
 Abandoned under permit Mar-.....-A?
 On 50 acres.
 Elevation, 1202' L.
~~Minimum~~ owned by Consolidation Coal Co., Fairmont, W. Va., and minerals
 by Mrs. Roland M. Wadsworth, Administratrix, Fleming Ave., Edgemont,
 Fairmont, W. Va.
 Drilling commenced April 4, 1929; completed June 5, 1929.
 Volume, 149,000 cu. ft.
 Rock pressure, 80 lbs. in 48 hrs.
 16" casing, 12'; 10", 570'; 8", 1321' (pulled); 6", 1841'; 3" tubing,
 1978'.
 Anchor packer, 3 x 6", set at 1852'.
 Perf. top, 1948; bot., 1952; top, 1857; bot., 1861'.
 Gas well. Record to Dept. of Mines dated June 6, 1950.
 Record to NGP from Mrs. Griffith Nov. 18, 1950. Old File No. 758.

| | Top. | Bottom. |
|---|------|---------|
| Clay, yellow, soft | 0 | 10 |
| Slate, brown, soft | 10 | 30 |
| Sand, yellow, soft | 30 | 42 |
| Line, gray, hard | 42 | 54 |
| Coal, black soft, (HPW, 57') | 54 | 57 |
| Slate, dark, soft | 57 | 112 |
| Line, gray, hard | 112 | 134 |
| Sand, gray, hard | 134 | 165 |
| Line, gray, hard | 165 | 202 |
| Slate, gray, soft | 202 | 217 |
| Line, gray, hard | 217 | 255 |
| Sand, gray, hard | 255 | 260 |
| Line, white, hard | 260 | 275 |
| Slate, gray, soft | 275 | 287 |
| Line, white, hard | 287 | 353 |
| Sand, gray, hard | 353 | 406 |
| Mapletown (Sewickley) Coal, black, soft | 406 | 411 |
| Line, gray, hard | 411 | 424 |
| Slate, gray, soft | 424 | 431 |
| Line, gray, hard | 431 | 454 |
| Slate, gray, soft | 454 | 465 |
| Line, gray, hard | 465 | 485 |
| Slate, gray, soft | 485 | 503 |
| Line, gray, hard | 503 | 511 |
| Pittsburgh Coal, black, soft | 514 | 520 |
| Slate, gray, soft | 520 | 570 |
| Line, gray, hard | 570 | 606 |
| Slate, gray, soft | 606 | 643 |
| Line, white, soft | 643 | 653 |
| Slate, gray, soft | 653 | 663 |
| Red rock, soft | 663 | 678 |
| Sand, gray, soft | 678 | 708 |
| Slate, white, soft | 708 | 735 |
| Sand, white, hard | 735 | 799 |
| Slate, gray, soft | 799 | 847 |
| Line, gray, hard | 847 | 870 |
| Slate, gray, soft | 870 | 885 |
| Line, gray, hard | 885 | 905 |

(OVER)

E. J. PARKER NO. 1 (129) WELL (Continued).

| | | | Top. | Bottom. |
|--|--|---|------|---------|
| | | Slate, white, soft | 905 | 925 |
| | | Sand, gray, hard | 925 | 933 |
| | | Slate, gray, soft | 933 | 963 |
| | | Lime, white, soft | 963 | 980 |
| | | Slate, gray, soft | 980 | 1061 |
| | | Sand, gray, hard | 1061 | 1083 |
| | | Slate, gray, soft | 1083 | 1149 |
| | | Sand, gray, hard | 1149 | 1189 |
| | | Slate, gray, soft | 1189 | 1224 |
| | | Lime, white, hard | 1224 | 1232 |
| | | Sand, gray, hard | 1232 | 1252 |
| | | Slate, black, soft | 1252 | 1267 |
| | | Sand, gray, hard | 1267 | 1276 |
| | | Slate, black, soft | 1276 | 1296 |
| | | Sand, white, hard | 1296 | 1326 |
| | | Slate, gray, soft | 1326 | 1356 |
| | | Sand, white, hard | 1356 | 1392 |
| | | Slate, black, soft | 1392 | 1422 |
| | | Salt Sand, gray, hard (water, 1469-1478', hole full; water level, 1000') | | |
| | | | 1422 | 1591 |
| | | Slate, black, soft | 1591 | 1621 |
| | | Red rock, soft | 1621 | 1636 |
| | | Lime, gray, hard | 1636 | 1646 |
| | | Red rock, soft | 1646 | 1661 |
| | | Lime, gray, hard | 1661 | 1686 |
| | | Red rock, soft | 1686 | 1720 |
| | | Lime, gray, hard | 1720 | 1735 |
| | | Slate, gray, soft | 1735 | 1745 |
| | | Lime, gray, hard | 1745 | 1762 |
| | | Slate, gray, soft | 1762 | 1777 |
| | | Lime, white, hard | 1777 | 1792 |
| | | Pencil Cove, gray, soft | 1792 | 1797 |
| | | Big Lime, gray, hard | 1797 | 1853 |
| | | Big Injun Sand, white, hard (gas, 1858-61', 72 M. cu. ft.) | 1853 | 1874 |
| | | Red rock, soft | 1874 | 1879 |
| | | Big Injun Sand, white, hard | 1879 | 1910 |
| | | Big Injun Sand, white, soft | 1910 | 1918 |
| | | Big Injun Sand, white, hard (test, 1949', 70 M. cu. ft.; gas, 1949-1952', 203 M. cu. ft.) | 1918 | 1991 |
| | | Slate, gray, soft | 1991 | 2039 |
| | | Sand, gray, hard | 2039 | 2054 |
| | | Slate, gray, soft | 2054 | 2069 |
| | | Sand, gray, hard (test, 2069', 166 M.) | 2069 | 2077 |
| | | Slate, gray, soft | 2077 | 2097 |
| | | Sand, white, hard | 2097 | 2127 |
| | | Slate, gray, soft (test, 2127', 166 M.) | 2127 | 2232 |
| | | Lime, gray, hard | 2232 | 2257 |
| | | Slate, gray, soft | 2257 | 2282 |
| | | Sand, gray, hard (test, 2282', 149 M.) | 2282 | 2307 |
| | | Slate, gray, soft (test, 2310', 149 M.) | 2307 | 2330 |
| | | Lime, gray, hard | 2330 | 2340 |
| | | Slate, gray, soft | 2340 | 2359 |
| | | Sand, Gantz, white, hard (test, 2359', 149 M.) | 2359 | 2377 |

Top. Bottom.
2377 - 2407
2407 - 2414
2414 - 2434
2434 - 2476
1976

Sand, Gantz, gray, hard
Slate, gray, soft
Sand, gray, hard
Total depth
Plugged back to
(Test before tubed, 149 M.)
(Test after tubed, 149 M.)

(Continued on margin)



STATE OF WEST VIRGINIA
DEPARTMENT OF MINES
OIL AND GAS DIVISION

258

WELL RECORD

Permit No. MAN-102-A Oil or Gas Well Gas
(KIND)

Company OWENS-ILLINOIS GLASS CO., GAS DEPARTMENT
Address P. O. Box 4158, Charleston 4, W. Va.
Farm E. J. Parker Acres 50
Location (waters) _____
Well No. OI No. 129, farm No. 1 Elev. 1202
District Paw Paw County Marion
The surface of tract is owned in fee by Consolidation Coal Company Address Fairmont, W. Va.
Mineral rights are owned by Mrs. Roland M. Wadsworth, Administratrix Address Fleming Avenue Edgemont, Fairmont W. Va.
Drilling commenced 4-4-29
Drilling completed 6-5-29
Date Shot _____ From _____ To _____
With _____
Open Flow _____ /10ths Water in _____ Inch
_____ /10ths Merc. in _____ Inch
Volume 149 M Cu. Ft.
Rock Pressure 80 lbs. 48 hrs.
Oil _____ bbls., 1st 24 hrs.
Fresh water _____ feet _____ feet
Salt water _____ feet _____ feet

| Casing and Tubing | Used in Drilling | Left in Well | Packers |
|-------------------|------------------|--------------|----------------|
| Size | | | |
| 16 | 12' | 12' | Kind of Packer |
| 13 | | | Anchor |
| 10 | 570" | 570" | Size of |
| 8 1/4 | 1321' | - | 3" x 6-5/8" |
| 6 3/8 | 1841' | 1841' | Depth set |
| 5 3/16 | | | 1852' |
| 3 | 1978' | 1978' | Perf. top |
| | | | 1952 |
| 2 | | | Perf. bottom |
| | | | 1857 |
| Liners Used | | | Perf. top |
| | | | 1861 |
| | | | Perf. bottom |

CASING CEMENTED _____ SIZE _____ No. Ft. _____ Date _____
COAL WAS ENCOUNTERED AT _____ FEET _____ INCHES
_____ FEET _____ INCHES FEET _____ INCHES
_____ FEET _____ INCHES FEET _____ INCHES

| Formation | Color | Hard or Soft | Top | Bottom | Oil, Gas or Water | Depth Found | Remarks |
|-----------------|--------|--------------|-----|--------|-------------------|-------------|-----------|
| Clay | Yellow | Soft | 0 | 10 | | | |
| Slate | Brown | Soft | 10 | 30 | | | |
| Sand | Yellow | Soft | 30 | 42 | | | |
| Line | Gray | Hard | 42 | 54 | | | |
| Coal | Black | Soft | 54 | 57 | Water | 57' | Hole full |
| Slate | Dark | Soft | 57 | 112 | | | |
| Line | Gray | Hard | 112 | 134 | | | |
| Sand | Gray | Hard | 134 | 165 | | | |
| Line | Gray | Hard | 165 | 202 | | | |
| Slate | Gray | Soft | 202 | 217 | | | |
| Line | Gray | Hard | 217 | 255 | | | |
| Sand | Gray | Hard | 255 | 260 | | | |
| Line | White | Hard | 260 | 275 | | | |
| Slate | Gray | Soft | 275 | 287 | | | |
| Line | White | Hard | 287 | 353 | | | |
| Sand | Gray | Hard | 353 | 406 | | | |
| Mapletown Coal | Black | Soft | 406 | 411 | | | |
| Line | Gray | Hard | 411 | 424 | | | |
| Slate | Gray | Soft | 424 | 431 | | | |
| Line | Gray | Hard | 431 | 454 | | | |
| Slate | Gray | Soft | 454 | 465 | | | |
| Line | Gray | Hard | 465 | 485 | | | |
| Slate | Gray | Soft | 485 | 503 | | | |
| Line | Gray | Hard | 503 | 511 | | | |
| Slate | Black | Soft | 511 | 514 | | | |
| Pittsburgh Coal | Black | Soft | 514 | 520 | | | |
| Slate | Gray | Soft | 520 | 570 | | | |
| Line | Gray | Hard | 570 | 606 | | | |
| Slate | Gray | Soft | 606 | 643 | | | |
| Line | White | Soft | 643 | 653 | | | |
| Slate | Gray | Soft | 653 | 663 | | | |
| Red Rock | Red | Soft | 663 | 678 | | | |
| Sand | Gray | Soft | 678 | 708 | | | |
| Slate | White | Soft | 708 | 735 | | | |
| Sand | White | Hard | 735 | 799 | | | |
| Slate | Gray | Soft | 799 | 847 | | | |
| Line | Gray | Hard | 847 | 870 | | | |
| Slate | Gray | Soft | 870 | 885 | | | |
| Line | Gray | Hard | 885 | 905 | | | |



(Over)

NOV 18 1950

| Formation | Color | Hard or Soft | Top | Bottom | Oil, Gas or Water | Depth Found | Remarks |
|-----------------|-------|--------------|------|--------|-------------------|-------------|-------------|
| Sand | Gray | Hard | 925 | 933 | | | |
| Slate | Gray | Soft | 933 | 963 | | | |
| Lime | White | Soft | 963 | 980 | | | |
| Slate | Gray | Soft | 980 | 1061 | | | |
| Sand | Gray | Hard | 1061 | 1083 | | | |
| Slate | Gray | Soft | 1083 | 1119 | | | |
| Sand | Gray | Hard | 1119 | 1189 | | | |
| Slate | Gray | Soft | 1189 | 1224 | | | |
| Lime | White | Hard | 1224 | 1232 | | | |
| Sand | Gray | Hard | 1232 | 1252 | | | |
| Slate | Black | Soft | 1252 | 1267 | | | |
| Sand | Gray | Hard | 1267 | 1276 | | | |
| Slate | Black | Soft | 1276 | 1296 | | | |
| Sand | White | Hard | 1296 | 1326 | | | |
| Slate | Gray | Soft | 1326 | 1356 | | | |
| Sand | White | Hard | 1356 | 1392 | | | |
| Slate | Black | Soft | 1392 | 1422 | | | |
| Salt Sand | Gray | Hard | 1422 | 1591 | Water | 1469-1478 | Hole full - |
| Slate | Black | Soft | 1591 | 1621 | water level | 1000'. | |
| Red Rock | Red | Soft | 1621 | 1636 | | | |
| Lime | Gray | Hard | 1636 | 1646 | | | |
| Red Rock | Red | Soft | 1646 | 1661 | | | |
| Lime | Gray | Hard | 1661 | 1686 | | | |
| Red Rock | Red | Soft | 1686 | 1720 | | | |
| Lime | Gray | Hard | 1720 | 1735 | | | |
| Slate | Gray | Soft | 1735 | 1745 | | | |
| Lime | Gray | Hard | 1745 | 1762 | | | |
| Slate | Gray | Soft | 1762 | 1777 | | | |
| Lime | White | Hard | 1777 | 1792 | | | |
| Pencil Cave | Gray | Soft | 1792 | 1797 | | | |
| Big Lime | Gray | Hard | 1797 | 1853 | | | |
| Injun Sand | White | Hard | 1853 | 1874 | Gas | 1858-61 | 72 MCF |
| Red Rock | Red | Soft | 1874 | 1879 | | | |
| Injun Sand | White | Hard | 1879 | 1910 | | | |
| Injun Sand | White | Soft | 1910 | 1918 | | | |
| Injun Sand | White | Hard | 1918 | 1991 | Test | 1919 | 70 MCF |
| Slate | Gray | Soft | 1991 | 2039 | Gas | 1919-52 | 203 MCF |
| Sand | Gray | Hard | 2039 | 2054 | | | |
| Slate | Gray | Soft | 2054 | 2069 | | | |
| Sand | Gray | Hard | 2069 | 2077 | | | |
| Slate | Gray | Soft | 2077 | 2097 | | | |
| Sand | White | Hard | 2097 | 2127 | Test | 2069 | 166 MCF |
| Slate | Gray | Soft | 2127 | 2232 | Test | 2127 | 166 MCF |
| Lime | Gray | Hard | 2232 | 2257 | | | |
| Slate | Gray | Soft | 2257 | 2282 | | | |
| Sand | Gray | Hard | 2282 | 2307 | Test | 2282 | 119 MCF |
| Slate | Gray | Soft | 2307 | 2330 | Test | 2310 | 119 MCF |
| Lime | Gray | Hard | 2330 | 2340 | | | |
| Slate | Gray | Soft | 2340 | 2359 | | | |
| Sand (Gantz) | White | Hard | 2359 | 2377 | | | |
| Sand (Gantz) | Gray | Hard | 2377 | 2407 | Test | 2359 | 119 MCF |
| Slate | Gray | Soft | 2407 | 2414 | | | |
| Sand | Gray | Hard | 2414 | 2434 | | | |
| Total Depth | | | | 2434 | | | |
| Plugged back to | | | | 1978 | Test before | tubed | 119 MCF |
| | | | | | Test after | " | 119 MCF |

Date June 6, 1950

APPROVED OWENS-ILLINOIS GLASS CO., GAS DEPT., Owner

By A. H. Smith (Title) Geologist