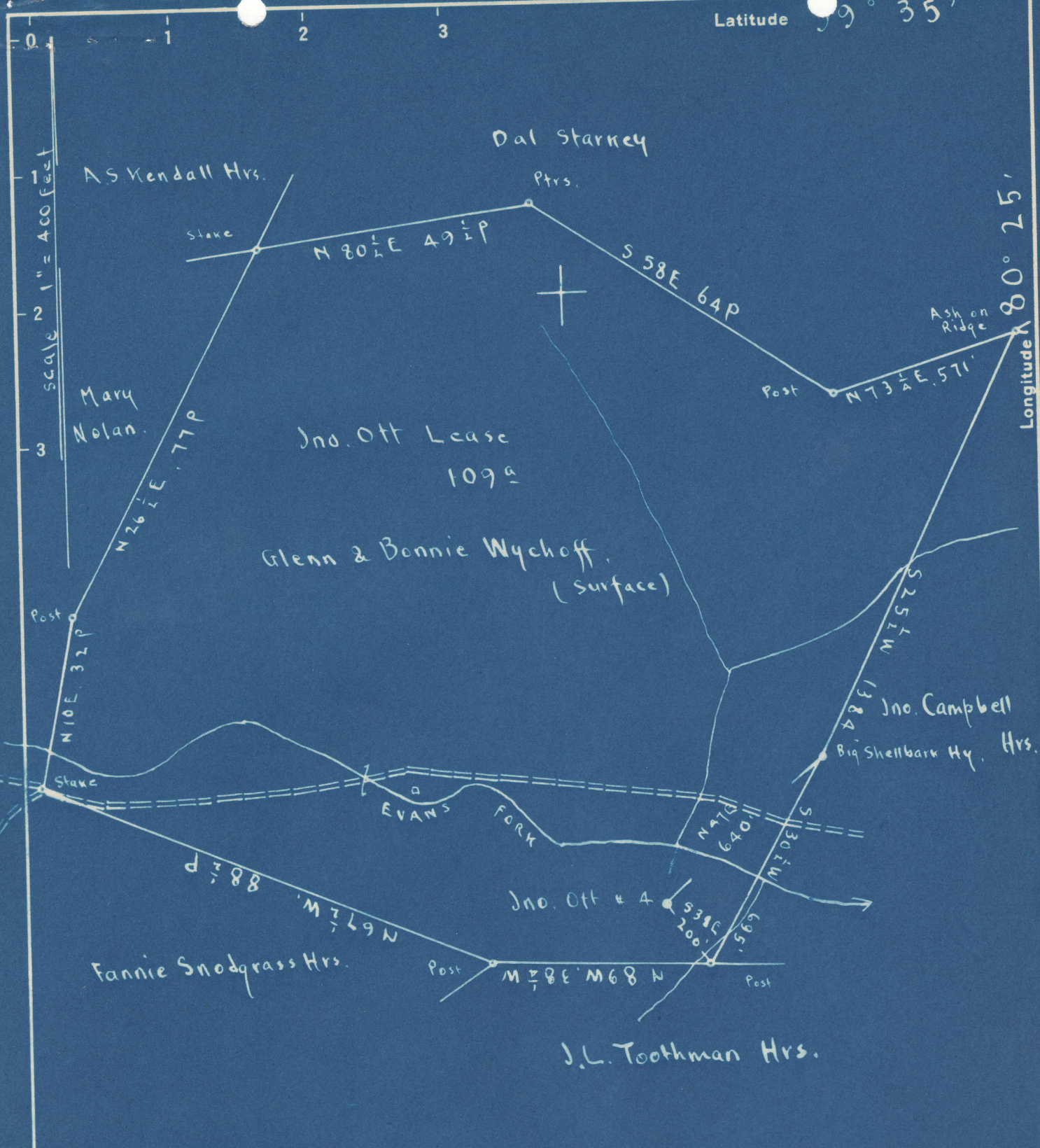


Latitude 39° 35'



Surface: Glenn & Bonnie Wychoff; R.F.D #1, Mannington, W. Va.  
 Coal: State of W. Va.

2.11 S 2.14 S  
 3.49 W 3.52 W

- New Location
- Drill Deeper
- Abandonment

On 400' Map # 2654

N 78 8, E 8

Company The Tri-State Pipe Co.  
 Address Bellaire Ohio  
 Farm Jno. Ott  
 Tract \_\_\_\_\_ Acres 109 Lease No. \_\_\_\_\_  
 Well (Farm) No. 4 Serial No. \_\_\_\_\_  
 Elevation (Spirit Level) \_\_\_\_\_  
 Quadrangle Mannington  
 County Marion District Mannington  
 Engineer EC Tabler  
 Engineer's Registration No. \_\_\_\_\_  
 File No. \_\_\_\_\_ Drawing No. \_\_\_\_\_  
 Date Sept. 18<sup>th</sup> - 1948 Scale 1" = 400 Feet

STATE OF WEST VIRGINIA  
 DEPARTMENT OF MINES  
 OIL AND GAS DIVISION  
 CHARLESTON

**WELL LOCATION MAP**  
 FILE NO. MAR-593-A

- + Denotes location of well on United States Topographic Maps, scale 1 to 62,500, latitude and longitude lines being represented by border lines as shown.
- Denotes one inch spaces on border line of original tracing.



JOHN OPT NO. 4 WELL.

Mannington District, Marion County, W. Va.

By The Tri-State Pipe Co., Bellaire, Ohio.

Abandoned under permit Mar-.....A?

On 109 acres, on Evas Fork.

Elevation, 1153.03' L.

Surface owned by Glenn and Bonnie Wychoff, R. F. D. No. 1, Mannington, W. Va., and minerals by State of West Virginia.

Drilling completed Feb. 21, 1914.

8" casing, 1320'; 6" casing, 1950'; 2" tubing, 2329'; all left in.

Casing not cemented.

Coal was encountered at 850-855 and 950-956'.

Oil well. Abandonment reported to Dept. of Mines Dec. 7, 1948.

Record to RST from Mrs. Griffith July 10, 1949. Old File No. 690.

	Top.	Bottom.
Mapletown (Sewickley) Coal	850	- 855
Pittsburgh Coal	950	- 956
Big Dunkard Sand	1445	- 1560
Maxton Sand (oil, 2113')	2110	- 2130
Big Line	2160	- 2222
Big Injun Sand (gas, 2310'; oil, 2315')	2222	- ....
Total depth		2329



STATE OF WEST VIRGINIA  
DEPARTMENT OF MINES  
OIL AND GAS DIVISION

690

WELL RECORD

Permit No. J93-A

Oil or Gas Well \_\_\_\_\_  
(KIND)

Company The Tri-State Pipe Company  
Address Bellaire, Ohio  
Farm John Ott Acres 109  
Location (waters) Evas Fork  
Well No. 4 Elev. 1153.03  
District Mannington County Marion  
The surface of tract is owned in fee by Glenn & Bonnie Wychoff, R. F. D. #1, Mannington, W. Va.  
Mineral rights are owned by State of W. Va.  
Address \_\_\_\_\_

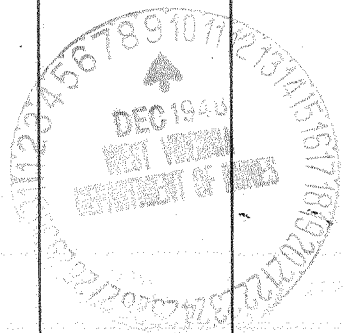
Casing and Tubing	Used in Drilling	Left in Well	Packers
Size			Kind of Packer
16			
13			
10			Size of
8 1/4	1320'	1320'	Depth set
6 5/8	1950'	1950'	
5 3/16			
3			Perf. top
2	2329'	2329'	Perf. bottom
Liners Used			Perf. top
			Perf. bottom

Drilling commenced \_\_\_\_\_  
Drilling completed February 21, 1914  
Date Shot \_\_\_\_\_ From \_\_\_\_\_ To \_\_\_\_\_  
With \_\_\_\_\_  
Open Flow \_\_\_\_\_ /10ths Water in \_\_\_\_\_ Inch  
\_\_\_\_\_ /10ths Merc. in \_\_\_\_\_ Inch  
Volume \_\_\_\_\_ Cu. Ft.  
Rock Pressure \_\_\_\_\_ lbs. \_\_\_\_\_ hrs.  
Oil \_\_\_\_\_ bbls., 1st 24 hrs.  
Fresh water \_\_\_\_\_ feet \_\_\_\_\_ feet  
Salt water \_\_\_\_\_ feet \_\_\_\_\_ feet

CASING CEMENTED No. \_\_\_\_\_ SIZE \_\_\_\_\_ No. Ft. \_\_\_\_\_ Date \_\_\_\_\_

COAL WAS ENCOUNTERED AT <sup>850</sup> 855 FEET 60 INCHES  
<sup>950</sup> 956 FEET 72 INCHES FEET INCHES  
FEET INCHES FEET INCHES

Formation	Color	Hard or Soft	Top	Bottom	Oil, Gas or Water	Depth Found	Remarks
Mapletown Coal			850	855			
Pittsburgh Coal			950	956			
Big Dunkard			1445	1560			
Maxon			2110	2130			
Oil			2113		Oil		
Lime			2160	2222			
Big Injun			2222				
Gas			2310		Gas		
Oil			2315				
Total Depth				2329			



(Over)

JUL 10 1949

