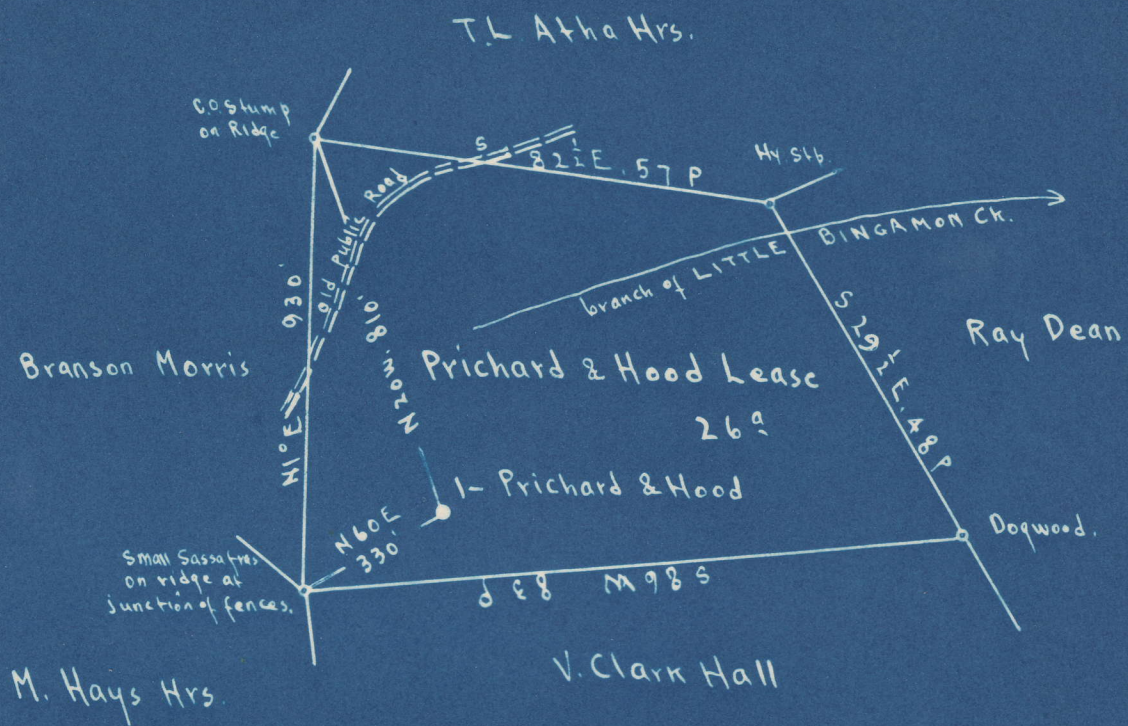


Latitude 39° 30'

Longitude 80° 20'

Scale, 1" = 400 Feet



0.415      0.42      S  
 1.88W      1.91      W

Surface: T.L. Atha Hrs.  
 Address Mrs. Tessie Norris, Homewood, Mannington, W. Va.

Coal: Tract 213, The Union Trust Co., of Pittsburgh, Pa. Trustee.

By: THE CHARLES NATIONAL BANK, TRUSTEE  
 Box 308, Fairmont, W. Va.

New Location   
 Drill Deeper   
 Abandonment  On 400' map # 2957.

N 3 E 14

Company Raad Supply Co.  
 Address Salem, W. Va.  
 Farm Prichard & Hood  
 Tract          Acres 26<sup>a</sup> Lease No.           
 Well (Farm) No. 1 Serial No.           
 Elevation (Spirit Level)          Floor 1375.94  
         Ground 1373.54  
 Quadrangle CLARKSBURG  
 County Marion District Mannington  
 Engineer E.C. Tabler  
 Engineer's Registration No.           
 File No.          Drawing No.           
 Date Aug. 25<sup>th</sup> 1948 Scale 1" = 400 Feet.

NC

STATE OF WEST VIRGINIA  
 DEPARTMENT OF MINES  
 OIL AND GAS DIVISION  
 CHARLESTON

WELL LOCATION MAP  
 FILE NO. MAR-586-A

+ Denotes location of well on United States Topographic Maps, scale 1 to 62,500, latitude and longitude lines being represented by border lines as shown.  
 - Denotes one inch spaces on border line of original tracing.



FRICHARD & HOOD NO. 1 WELL.

No. 550F?  
586A

Mannington District, Marion County, W. Va.  
By Road Supply Co., 184 E. Main St., Salem, W. Va.  
Abandoned under permit Mar-.....-47  
On 26 acres, on branch of Little Winghamon Creek.  
Elevation, 1373.54' L.

Surface owned by T. L. Atha Heirs, Adr., Mrs. Tessie Norris, Homewood,  
Mannington, W. Va., and minerals by The Union Trust Co. of Pitts-  
burgh, Pa., Trustee, Tract 213.; now The Charleston National Bank,  
Trustee, Box 368, Fairmont, W. Va.

Drilling completed October 30, 1900.

10" casing, 212'; 8" , 1270'; 5" , 2078'; 2" tubing, 2231'; all left in.  
Casing not cemented.

Coal was encountered at 764-770'.

Oil well. Record to Dept. of Mines dated Dec. 8, 1948.

Record to RCF from Mrs. Griffith September 14, 1949. Old File No. 700.

	Top.	Bottom.
Pittsburgh Coal	764	770
Big Injun Sand (gas, 2144-2210') (1st pay, oil, 2215'; 2nd pay, oil, 2225')	2143	....
Total depth		2231
(Record incomplete).		

Mannington District, Marion County, W. Va.  
By Hartman Oil Co.

	Top.	Bottom.
Pittsburgh Coal		764
Big Injun Sand	2143	2215
Total depth		2233



