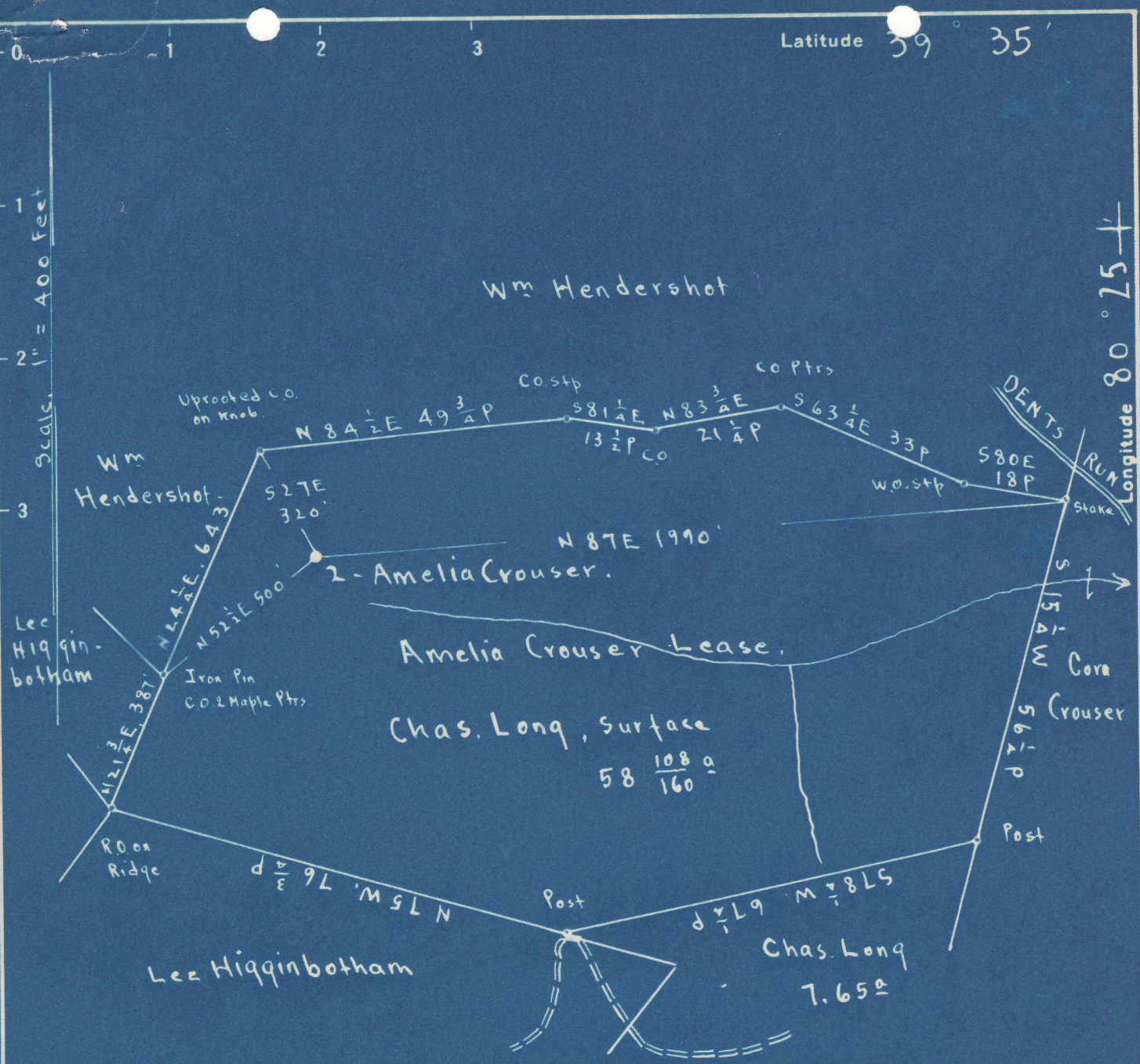


Latitude 39° 35'

Longitude 80° 25'

Scale 1" = 400 Feet



1.415  
0.12W

1.43 S  
0.12 W

Surface: Chas. Long, RFD. #1, Mannington, W.Va.

Coal: The Union Trust Co., of Pittsburgh, Pa., Trustee.

New Location

Drill Deeper

Abandonment

On 400' Map 2656

N 8 E 12

Company The Tri-State Pipe Co.

Address Bellaire, Ohio

Farm Amelia Crouser

Tract Acres 58 <sup>108</sup>/<sub>160</sub> Lease No. SW

Well (Farm) No. 2 Serial No. \_\_\_\_\_

Elevation (Spirit Level) Floor = 1328.91  
Ground = 1325.91

Quadrangle MANNINGTON

County Marion District Mannington

Engineer E. C. Tabler

Engineer's Registration No. \_\_\_\_\_

File No. \_\_\_\_\_ Drawing No. \_\_\_\_\_

Date June 28<sup>th</sup> 1948 Scale 1" = 400 Feet.

STATE OF WEST VIRGINIA  
DEPARTMENT OF MINES  
OIL AND GAS DIVISION  
CHARLESTON

WELL LOCATION MAP  
FILE NO. MAR-536-A

+ Denotes location of well on United States Topographic Maps, scale 1 to 62,500, latitude and longitude lines being represented by border lines as shown.

- Denotes one inch spaces on border line of original tracing.

39°35'00"

Latitude

80°25'00"



Longitude

Topo Location

7.5' Loc. \_\_\_\_\_ 15' Loc. \_\_\_\_\_  
 \_\_\_\_\_ (calc.) \_\_\_\_\_

Company \_\_\_\_\_

Farm \_\_\_\_\_

15' Quad \_\_\_\_\_  
(sec.)

7.5' Quad Glover Gap

District Mannington

WELL LOCATION PLAT

County 049 Permit 30536

536K

Huntington District, Marion County, W. Va.  
 by the Tri-State Pipe Co., Williams, W. Va.  
 Abandoned under permit No. 1000000001

On 7-10/100 acres, on Lewis Run.

Elevation, 1735.00' ±.

Surface owned by Marion Iron, L. P. No. 1, Huntington, W. Va., and

Minerals by The Union Trust Co. of Pittsburgh, Trustee, Pittsburgh, Pa.

Drilling completed (to 2007') Sept. 24, 1911.

Drilling deeper completed April 4 (1912), 1912 (to 2079').

6" casing, 1000'; 4", 2000'; 3", 2000'; 2" tubing, 2079'; all left in.

Casing not cemented.

Coal was encountered at 910-915' and 1005-1010'.

Oil well. Production reported to Dept. of Mines July 7, 1913.

Reopened to 207' from top, October 11, 1940. Old file No. 617.

	Top.	Bottom.
Surface	0	0
Steel head	600	640
Insulation (Rocking) coal	940	945
Pittsburgh coal	1070	1084
Little Richard sand	1425	1471
Big Richard sand	1535	1605
Low salt sand (iron, 1810 and 1840')	1775	1815
Low salt sand	1925	1980
Sand	2015	2070
Little line	2000	2045
Rossil sand	2045	2260
Big line	2260	2300
Big Lajan sand (gas, 2700 and 3400') (oil, 2400')	2700	3400
Total depth		3400
REOPENED DEPTH:		
Thirty-foot sand	2970	3010
Thirty-foot (oil, 3060')	3050	3060
Total depth		3070



STATE OF WEST VIRGINIA  
DEPARTMENT OF MINES  
OIL AND GAS DIVISION

613

WELL RECORD

Permit No. 536-A

Oil or Gas Well \_\_\_\_\_ (KIND)

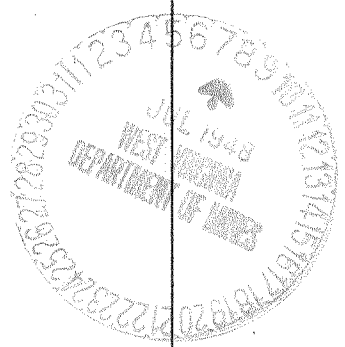
Company The Tri-State Pipe Co.  
Address Bellaire, Ohio  
Farm Amelia Crouser Acres 58 103 160  
Location (waters) Dents Run  
Well No. 2 Elev. 1325.91  
District Mannington County Marion  
The surface of tract is owned in fee by Charles Long  
R. F. D. #1 Address Mannington, W. Va.  
Mineral rights are owned by The Union Trust Co.  
of Pittsburgh, Trustee - Pittsburgh, Pa.  
Drilling commenced \_\_\_\_\_  
Drilling completed September 24, 1916  
Date Shot Drilled deeper - April 11, 1924.  
With \_\_\_\_\_

Casing and Tubing	Used in Drilling	Left in Well	Packers
Size			
16			Kind of Packer
13			
10			Size of
8 1/4	1535'	1535'	
6%	2318'	2318'	Depth set
5 3/16	3005'	3005'	
3			Perf. top
2	3079'	3079'	Perf. bottom
Liners Used			Perf. top
			Perf. bottom

Open Flow /10ths Water in \_\_\_\_\_ Inch  
/10ths Merc. in \_\_\_\_\_ Inch  
Volume \_\_\_\_\_ Cu. Ft.  
Rock Pressure \_\_\_\_\_ lbs. \_\_\_\_\_ hrs.  
Oil \_\_\_\_\_ bbls., 1st 24 hrs.  
Fresh water \_\_\_\_\_ feet  
Salt water \_\_\_\_\_ feet

CASING CEMENTED No. \_\_\_\_\_ SIZE \_\_\_\_\_ No. Ft. \_\_\_\_\_ Date \_\_\_\_\_  
COAL WAS ENCOUNTERED AT 1044 FEET 96 INCHES  
945 FEET 60 INCHES FEET INCHES  
FEET INCHES FEET INCHES

Formation	Color	Hard or Soft	Top	Bottom	Oil, Gas or Water	Depth Found	Remarks
Conductor				12'			
Bluff Sand			620'	660			
Mapletown Coal			940	945			
Pittsburgh Coal			1036	1044			
Little Dunkard			1426	1471			
Big Dunkard			1505	1655			
1st. Salt Sand			1795	1915			
Water			1810		Water		
Water			1840		Water		
2nd Salt Sand			1925	1930			
Sand			2015	2090			
Little Lime			2200	2245			
Pencil Cave			2245	2260			
Big Lime			2260	2359			
Big Injun			2359	2493			
Gas			2380		Gas		
Gas			2428		Gas		
Oil			2434	2440			
Total Depth				2443			



Formation	Color	Hard or Soft	Top	Bottom	Oil, Gas or Water	Depth Found	Remarks
Drilled deeper - Completed April 4, 1924.							
Fifty Foot			2974	3018			
Thirty Foot			3050				
Oil			3063		Oil		
Total Depth				3079			

Date July 7, 1948

APPROVED The Tri-State Pipe Co., Owner

By J. M. Read, Contractor

*J. M. Read, Contractor*  
(Title)