

LATITUDE

39° 30'

LONGITUDE

80° 15'

516

7'5 OGIS topo location

7.5' loc 3.33 S 15' loc _____
 2.18 W (calc.) _____

Company _____

Farm Noah Stevens I

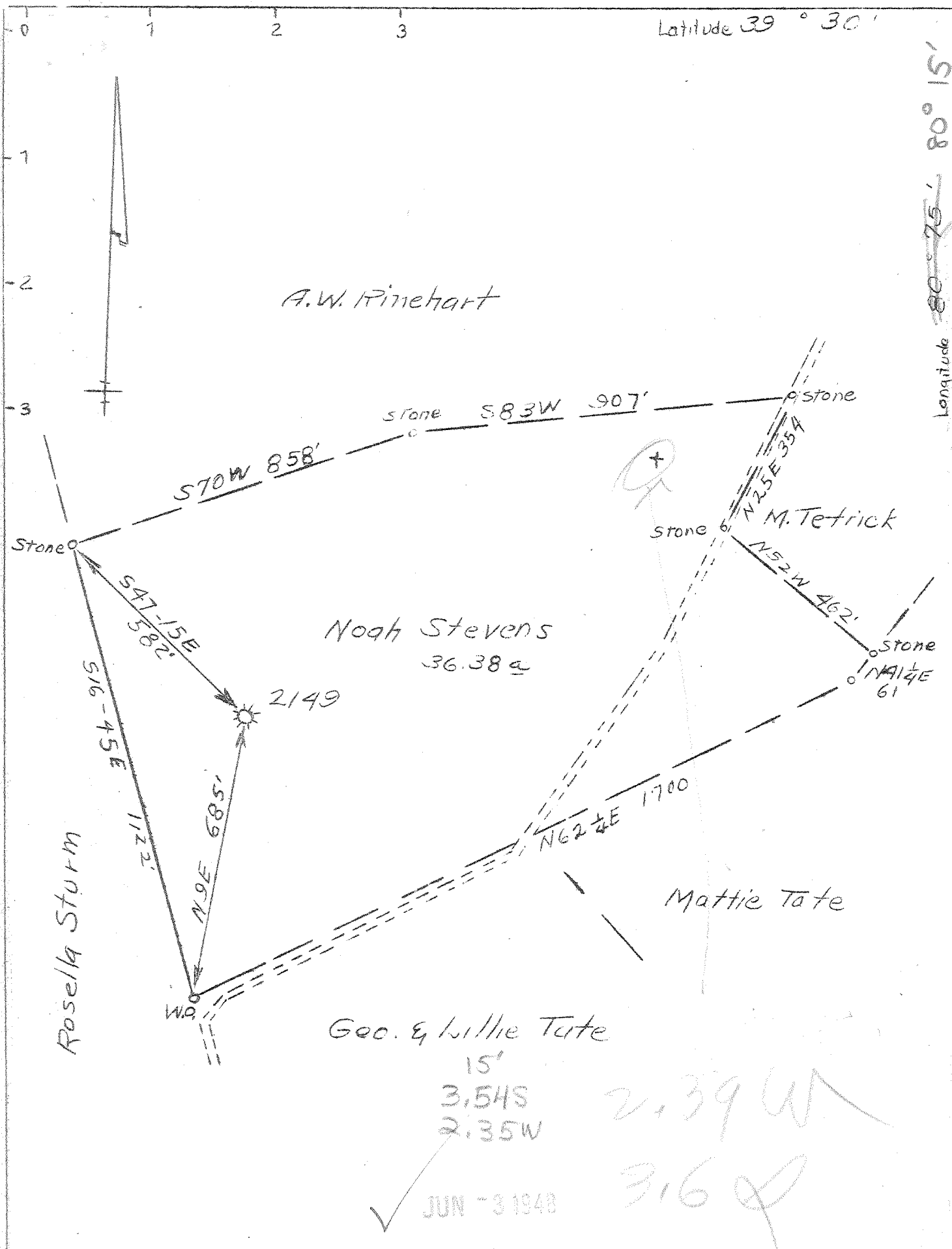
Quad Shinnston

County Mason

District _____

WELL LOCATION MAP

File No. Map 516 A
(41) 30516



COMPANY PITTSBURGH & W.VA. GAS CO.
 ADDRESS CLARKSBURG, W. VA.
 FARM NOAH STEVENS
 TRACT ACRES 36.38 LEASE NO. 7259
 WELL (FARM) NO. 1 SERIAL NO. 2149
 ELEVATION (SPIRIT LEVEL) - 1255.6 V.A.
 QUADRANGLE CLARKSBURG N.E. 23
 COUNTY MARION DISTRICT LINCOLN
 ENGINEER JAMERT JEFFRIES
 ENGINEER'S REG. NO. 1084
 FILE NO. 157/59 DWG. NO. NW
 DATE 5/4/48 SCALE 1"-300'

STATE OF WEST VIRGINIA
 DEPARTMENT OF MINES
 OIL AND GAS DIVISION
 CHARLESTON

WELL LOCATION MAP

FILE NO. MAR 516 A

+ DENOTES LOCATION OF WELL ON U.S. TOPOGRAPHIC MAPS, SCALE 1 TO 62,500 LATITUDE AND LONGITUDE LINES BEING REPRESENTED BY BORDER LINES AS SHOWN.
 - DENOTES ONE INCH SPACES ON BORDER LINE OF ORIGINAL TRACING.



STATE OF WEST VIRGINIA
DEPARTMENT OF MINES
OIL AND GAS DIVISION

598

WELL RECORD

Permit No. 516-A Oil or Gas Well "GAS"
(KIND)

Company Pittsburgh & West Va Gas Company.
Address Clarksburg, West Va.
Farm Noah Stevens Acres 36
Location (waters) Clarksburg N/E. 2-3
Well No. 2149 Elev. 1255 VA
District Lincoln County Marion
The surface of tract is owned in fee by L. W. Guinn
R.D.#1 Address Northington, W.Va.
Mineral rights are owned by M. E. Stevens et al.
R.D.#2 Address Northington, W.Va.
Drilling commenced April 4th, 1907
Drilling completed May 25th, 1907
Date Shot _____ From _____ To _____
With _____
Open Flow _____ /10ths Water in _____ Inch
_____ /10ths Merc. in _____ Inch
Volume _____ Cu. Ft.
Rock Pressure _____ lbs. _____ hrs.
Oil _____ bbls., 1st 24 hrs.
Fresh water _____ feet _____ feet
Salt water _____ feet _____ feet

| Casing and Tubing | Used in Drilling | Left in Well | Packers |
|-------------------|------------------|--------------|----------------|
| Size | | | Kind of Packer |
| 16 | | | |
| 13 | | | |
| 10 | 528' | 528' | Size of |
| 8 1/2 | 1281' | 1281' | |
| 6 5/8 | 1433' | 1433' | Depth set |
| 5 3/16 | 1817' | None. | |
| 3 | | | Perf. top |
| 2 | | | Perf. bottom |
| Liners Used | | | Perf. top |
| | | | Perf. bottom |

CASING CEMENTED _____ SIZE _____ No. Ft. _____ Date _____
COAL WAS ENCOUNTERED AT 376 FEET 84 INCHES
490 FEET 108 INCHES 775 FEET 84 INCHES

| Formation | Color | Hard or Soft | Top | Bottom | Oil, Gas or Water | Depth Found | Remarks |
|----------------|--------|--------------|------|--------|-------------------|-------------|---------|
| Clay | Yellow | Soft | 0 | 8 | | | |
| Cluff Sand | Grey | Hard | 8 | 80 | | | |
| Slate | Black | Soft | 80 | 95 | | | |
| Lime | White | Hard | 95 | 200 | | | |
| Slate | Black | Soft | 200 | 212 | | | |
| Lime | White | Hard | 212 | 376 | | | |
| A.T. Coal | | | 376 | 383 | | | |
| Lime | White | Hard | 383 | 475 | | | |
| Slate | " | Soft | 475 | 490 | | | |
| Pgh. Coal | | | 490 | 499 | | | |
| Lime | White | Hard | 499 | 519 | | | |
| Slate | " | Soft | 519 | 559 | | | |
| Slates&Shells | " | | 559 | 775 | | | |
| Coal | | | 775 | 782 | | | |
| Slate | White | Hard | 782 | 808 | | | |
| Sand | " | " | 808 | 828 | | | |
| Slate | Black | Soft | 828 | 890 | | | |
| Little Dunkard | White | Hard | 890 | 915 | | | |
| Slate | White | Soft | 915 | 978 | | | |
| Big Dunkard | " | Hard | 978 | 1066 | | | |
| Slate | Dark | Soft | 1066 | 1086 | | | |
| Lime | White | Hard | 1086 | 1126 | | | |
| Slate | Dark | Soft | 1126 | 1180 | | | |
| Gas Sand | White | Hard | 1180 | 1246 | | | |
| Lime | " | " | 1246 | 1258 | | | |
| Salt Sand | " | " | 1258 | 1278 | Water | 1278' | |
| " | " | " | 1278 | 1600 | " | 1447' | |
| " | " | " | 1600 | 1795 | " | 1475' | |
| Red Rock | Red | Soft | 1600 | 1795 | | | |
| Little Lime | | | 1795 | 1803 | | | |
| Slate | Black | Soft | 1803 | 1810 | | | |
| Big Lime | White | Hard | 1810 | 1900 | | | |
| Big Injun | " | " | 1900 | 1980 | | | |
| Slate | Red | Soft | 1980 | 1990 | | | |
| Squaw Sand | White | Hard | 1990 | 2000 | | | |
| Slate | " | Soft | 2000 | 2025 | | | |
| Lime | " | Hard | 2025 | 2074 | | | |
| Slate | " | Soft | 2074 | 2174 | | | |
| Slate | " | " | 2174 | 2350 | | | |

| Formation | Color | Hard or Soft | Top | Bottom | Oil, Gas or Water | Depth Found | Remarks |
|-------------------------|-------|--------------|------|--------|-------------------|-------------|---------|
| Upper 30 Ft. Sand | Wh. | Hard | 2350 | 2380 | | | |
| Slate | Light | Soft | 2380 | 2410 | | | |
| 50 Ft. Sand | White | Hard | 2410 | 2458 | | | |
| Slate | " | Soft | 2458 | 2468 | | | |
| Lower 30 Ft. Sand- Pink | | Close | 2468 | 2508 | | | |
| Slate | White | Soft | 2508 | 2520 | | | |
| Sand | " | Close | 2520 | 2526 | | | |
| Slate | Red | Soft | 2526 | 2552 | | | |
| Sand | Pink | Close | 2552 | 2570 | | | |
| Slate | Red | Soft | 2570 | 2600 | | | |
| Slate | " | " | 2600 | 2630 | | | |
| Stray Sand | White | Close | 2630 | 2695 | | | |
| Slate | " | Soft | 2695 | 2711 | | | |
| Gordon Sand | " | Hard | 2711 | 2729 | | | |
| Slate | Dark | Soft | 2729 | 2735 | | | |
| 4th. Sand | White | Hard | 2735 | 2746 | | | |
| Slate | " | Soft | 2746 | 2782 | | | |
| Sand | Dark | Hard | 2782 | 2792 | | | |
| Slate | Light | Soft | 2792 | 2820 | | | |
| Slate | " | " | 2820 | 2876 | | | |
| 5th. Sand | Brown | Close | 2876 | 2887 | Gas | 2881' | |
| Slate | Light | Soft | 2887 | 2889 | | | |
| Sand | White | Hard | 2889 | 2894 | Gas | 2891' | |
| Slate | " | Soft | 2894 | 2909 | | | |
| Total Depth..... | | | | 2909 | | | |

October 29th, 1947

Date _____, 19____

PITTSBURGH & WEST VA GAS COMPANY.

APPROVED _____, Owner

By W. M. Mester
(Title)

Record of Well No. 2149 Located on Nash Stevens Farm Feb 13 1907
Lincoln District Marrow County West Va State
 Division A District No. 11 Drilled under well Order 731
 Rig built by John Craig Began 19 Completed Mar 25 1907
 Well drilled by Hartness Cariss Began April 5 1907 Completed May 25 1907
 Depth of Well 2409 feet Size of Hole 5 3/16 Producing Gas
 Elev. 1256 G.L.

| CASED WITH | | | REMARKS |
|------------|--------|-----------|---------------------------------------|
| AMOUNT | SIZE | KIND | |
| 420' | 10" | New | |
| 108' | 10" | Old | |
| 1284' | 8 1/2" | New | |
| 1488' | 6 5/8" | " | |
| 1849' | 5 3/16 | Old | Received 1247 ft. of 5 3/16 9-14-1914 |
| 2486' | 3" | New | Reclaimed |
| 296' | 3" | Finishing | |
| 2669' | 2" | " | 9-12-1914 |

COAL VEINS Maple Town 396 383 490 499

| FORMATIONS | | | | | |
|----------------------|-------|----------------------------|-------------|-------------|------------------------------------------|
| FORMATION | COLOR | OPEN OR CLOSE HARD OR SOFT | TOP | BOTTOM | REMARKS GAS-OIL-WATER (THICKNESS OF PAY) |
| <u>Little Dunbar</u> | | | <u>818</u> | <u>828</u> | |
| <u>Big "</u> | | | <u>870</u> | <u>915</u> | |
| <u>Gas Sand</u> | | | <u>970</u> | <u>1066</u> | |
| <u>Salt "</u> | | | <u>1181</u> | <u>1247</u> | <u>Water 1278</u> |
| <u>" "</u> | | | <u>1288</u> | <u>1600</u> | <u>" 1447</u> |
| <u>Big Linn</u> | | | <u>1810</u> | | <u>" 1495</u> |
| <u>Big Linn</u> | | | <u>1900</u> | <u>1980</u> | |
| <u>North West</u> | | | <u>2410</u> | <u>2468</u> | |
| <u>North West</u> | | | <u>2468</u> | <u>2538</u> | |
| <u>Holden Gray</u> | | | <u>2680</u> | <u>2695</u> | |
| <u>" Sand</u> | | | <u>2711</u> | <u>2727</u> | |
| <u>Wraith</u> | | | <u>2736</u> | <u>2747</u> | |
| <u>Wraith</u> | | | <u>2876</u> | <u>2887</u> | <u>Gas 2876</u> |
| <u>Merrifield</u> | | | <u>2887</u> | <u>2894</u> | <u>" 2881</u> |
| | | | | | <u>" 2891</u> |

FIRST PRESSURE TEST IN 5 3/16 CASING

REMARKS

| | | | |
|---------------|-------------------|----------------------------------------------|---------------------------------------------------------------------------------------------------------------------------------------------------------------------------------------------------------------------------------------------------------|
| 30 Sec. | lbs. | 2 | 9-2-1914. Well shot with 5096 Lower shell 4' x 6 ft. Out of shell at 2890 ft. 3 1/2" flange shell top of shell 3 1/2 x 7 2 ft. May 1916. 8 W 2" - 134,400 390-4800. June 1917. 6 W 2" - 115,968 309-4800. June 1918 1.8 W 1" - 49,800 |
| 1 Min. | " | 5 | |
| 2 " | " | 10 | |
| 5 " | " | 35 | |
| 10 " | " | 70 | |
| 15 " | " | 108 | |
| 30 " | " | 170 | |
| Rock Pressure | 400 ¹² | " in ¹² 305 ¹² - 1 lb. | |
| Taken | 19 | Sept 2 - 1914 | |
| By | | D. E. Thorgard | |

WELL TUBED AND PACKED Sept 12 1914

VIZ: - 123 ft. 2 1/2" of 2" Tubing
 14 ft. 2 7/8" of 3" "
 1 - 5 1/16 x 3" Anchor Washer
 12 ft. of 3" 1 1/2 ft. of anchor

FIRST PRESSURE TEST IN 2" TUBING

REMARKS

| | | | |
|---------------|------|-------------------|--|
| 30 Sec. | lbs. | 10 | |
| 1 Min. | " | 20 | |
| 2 " | " | 37 | |
| 5 " | " | 72 | |
| 10 " | " | 106 | |
| 15 " | " | 130 | |
| 30 " | " | 168 | |
| Rock Pressure | 740 | " in 340 - 4800. | |
| Taken | June | 1917 Sept 11 - 14 | |
| By | | W. H. [unclear] | |

MATERIAL FOR THIS WELL RECEIVED FROM FOLLOWING SOURCES: