

Latitude

Longitude

+  
 2.375  
 1.21w

Topo Location

7.5' Loc. \_\_\_\_\_ 15' Loc. \_\_\_\_\_  
 \_\_\_\_\_ (calc.) \_\_\_\_\_

Company \_\_\_\_\_

Farm JA Snyder #1

15' Quad \_\_\_\_\_  
(sec.)

7.5' Quad Grant Town

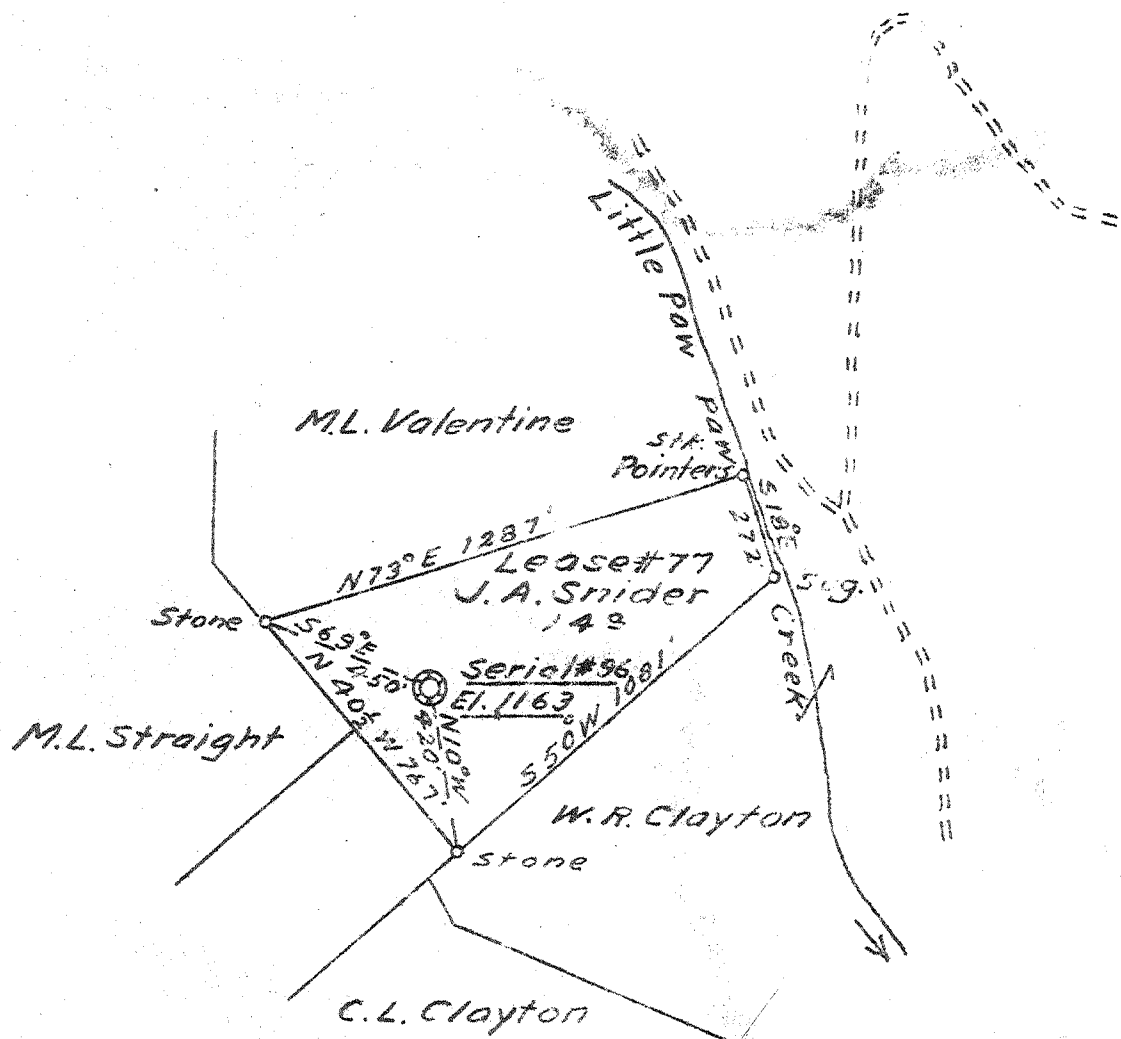
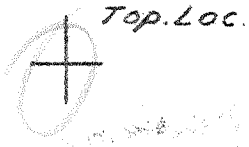
District Paw Paw

WELL LOCATION PLAT

County 049 Permit 30510

Latitude 35

Longitude 80 05



2.625  
3.42 W  
MAY - 8 1948

3.46 W  
2.62 W

New Location...  
Drill Deeper...  
Abandonment

Company Owens - Illinois Glass Co. Gas Dept.  
Address Box 4153 Charleston 4 W. Va.  
Farm J.A. Snider  
Tract \_\_\_\_\_ Acres 14 Lease No. 77  
Well (Farm) No. 1 Serial No. 96  
Elevation (Spirit Level) 1163  
Quadrangle Blacksville 8-52-55" W 340"  
County Marion District Paw Paw  
Engineer T.S. Flournoy  
Engineer's Registration No. 269  
File No. \_\_\_\_\_ Drawing No. \_\_\_\_\_  
Date Apr. 22, 1948 Scale 1 in. = 500 ft.

STATE OF WEST VIRGINIA  
DEPARTMENT OF MINES  
OIL AND GAS DIVISION  
CHARLESTON

WELL LOCATION MAP  
FILE NO. MAR-510-A

+ Denotes location of well on United States Topographic Maps, scale 1 to 62,500, latitude and longitude lines being represented by border lines as shown.  
- Denotes one inch spaces on border line of original tracing.

J.A. SNIDER No. 1 (96) - OWENS - ILL. GLASS CO. G.D. - MAR-510-A



STATE OF WEST VIRGINIA  
DEPARTMENT OF MINES  
OIL AND GAS DIVISION

604

WELL RECORD

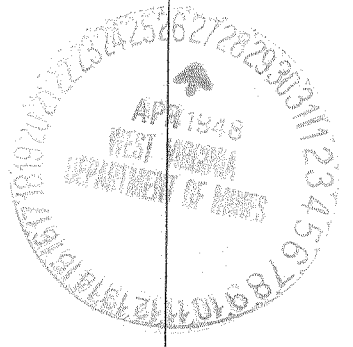
Permit No. 510-A Oil or Gas Well Gas  
(KIND)

Company Owens-Illinois Glass Co. - Gas Dept.  
 Address P. O. Box 4158, Charleston W. Va.  
 Farm Julia Snider Acres 14  
 Location (waters) \_\_\_\_\_  
 Well No. AI 96 - Snider "B" 1 Elev. 1163  
 District Paw Paw County Marion  
 The surface of tract is owned in fee by \_\_\_\_\_  
 Address \_\_\_\_\_  
 Mineral rights are owned by Martha V. Davis Apt. 106  
Llewellyn Straight Clydesdale Pl. C. W.  
300 Maple Ave., Fairmont Washington D. C.  
 Drilling commenced 8-16-26  
 Drilling completed 10-30-26  
 Date Shot 11-1-26 From 2348 To 2368  
 With 60 lbs.  
 Open Flow \_\_\_\_\_ /10ths Water in \_\_\_\_\_ Inch  
 \_\_\_\_\_ /10ths Merc. in \_\_\_\_\_ Inch  
 Volume 139 H Cu. Ft.  
 Rock Pressure \_\_\_\_\_ lbs. \_\_\_\_\_ hrs.  
 Oil \_\_\_\_\_ bbls., 1st 24 hrs.  
 Fresh water \_\_\_\_\_ feet \_\_\_\_\_ feet  
 Salt water \_\_\_\_\_ feet \_\_\_\_\_ feet

Casing and Tubing	Used in Drilling	Left in Well	Packers
Size			
16			Kind of Packer <u>Parnaco</u>
13			<u>Hook Well</u>
10	<u>550</u>	<u>550</u>	Size of <u>6 5/8 x 2 x</u>
8 1/2 <u>5/8</u>	<u>1141</u>	<u>None</u>	<u>10"</u>
6 5/8	<u>1784</u>	<u>1784</u>	Depth set <u>2047' 10"</u>
5 3/16			<u>from top</u>
3			Perf. top
2	<u>2434</u>	<u>2434</u>	Perf. bottom
Liners Used			Perf. top
			Perf. bottom

CASING CEMENTED \_\_\_\_\_ SIZE \_\_\_\_\_ No. Ft. \_\_\_\_\_ Date \_\_\_\_\_  
 COAL WAS ENCOUNTERED AT \_\_\_\_\_ FEET \_\_\_\_\_ INCHES  
 \_\_\_\_\_ FEET \_\_\_\_\_ INCHES FEET \_\_\_\_\_ INCHES  
 \_\_\_\_\_ FEET \_\_\_\_\_ INCHES FEET \_\_\_\_\_ INCHES

Formation	Color	Hard or Soft	Top	Bottom	Oil, Gas or Water	Depth Found	Remarks
Surface							
Gravels etc.			0	18			
Slate			18	40			
Line			40	47			
Slate			47	69			
Line			69	85			
Slate			85	110			
Coal			110	115			
Line			115	127			
Slate			127	146			
Line			146	171			
Slate			171	203			
Line			203	269			
Slate			269	283			
Line			283	329			
Sand			329	379			
Mapletown coal			379	384			
Slate			384	399			
Line			399	407			
Slate			407	422			
Line			422	470			
Sand			470	490			
Slate			490	495			
Pittsburgh coal			495	500			
Slate			500	505			
Line			505	529			
Slate			529	550			
Line			550	580			
Slate			580	657			
Sand			657	686			
Slate			686	752			
Sand			752	773			
Slate			773	835	Gas	761-763	Show
lime shells & slate			835	923			
Red rock			923	935			
Slate & shells			935	980			
Slate			980	1025			
Soft Lime			1025	1038			



Formation	Color	Hard or Soft	Top	Bottom	Oil, Gas or Water	Depth Found	Remarks
Slate			1038	1115			
Sand (soft)			1115	1155			
Slate			1155	1160			
Lime (soft)			1160	1196			
Hard sand			1196	1250			
Slate & Lime shells			1250	1325			
Hard sand			1325	1560	Water	1342	1 Boiler per Hr.
					Water	1430	Hole full
						Filled up to	500'
Slate			1560	1572			
Red rock			1572	1597			
Lime			1597	1620			
Red rock			1620	1637			
Lime & Slate			1637	1665			
Slate & Shells			1665	1740			
Little Lime			1740	1757			
Pencil cave			1757	1761			
Big Lime			1761	1833			
Injun Sand			1833	1973	Gas & Oil	1955-1959	Small show
Slate			1973	1996			
Slate & Shells			1996	2020			
Berea Sand			2020	2100			
Slate & Lime Shells			2100	2190			
Lime			2190	2220			
Slate & Shells			2220	2281			
Lime			2281	2300			
Slate & Shells			2300	2348			
Gantz sand			2348	2403	Gas	2352-2355	210 M
Slate			2403	2410	Gas	2365-2367	196 M
Lime			2410	2427	Test 10/19/26		117 M
Fifty foot sand			2427	2486			
Slate			2486	2503			
Sand shells			2503	2550			
Slate & Lime			2550	2585			
Red rock			2585	2615			
Sand			2615	2630			
Slate & Shells			2630	2685			
Gordon stray (shells)			2685	2721			
Slate & shells			2721	2785			
Fourth sand			2785	2820			
Slate			2820	2858			
Fifth sand			2858	2909			
Slate			2909	2921			
Hard sand			2921	2934			
Slate			2934	2991			
Lime			2991	3000			
Slate			3000	3050			
Total Depth				3050			
	Plugged back to 2405'						
	Stones etc.		3050	2861			
	3" Wood plug		2861	2858			
	Stones etc.		2858	2808			
	Open hole		2808	2455			
	Bridged		2455	2405			
	Total Depth of well			2405			
					11/3/26 - Tested 7/10		Water in 2" -
					139,000 cu. ft. (Fluid in hole)		
					11/6/26 - Tested 9/10		Water in 2" -
					158,000 cu. ft.		
					11/13/26 - When tubed tested 7/10		Water in 2" - 139,000 cu. ft.

Date April 22, 1948

APPROVED WERNERS-ILLINOIS GLASS CO. • GAS DEPT., Owner

By

A. H. McClain

(Title)

Geologist