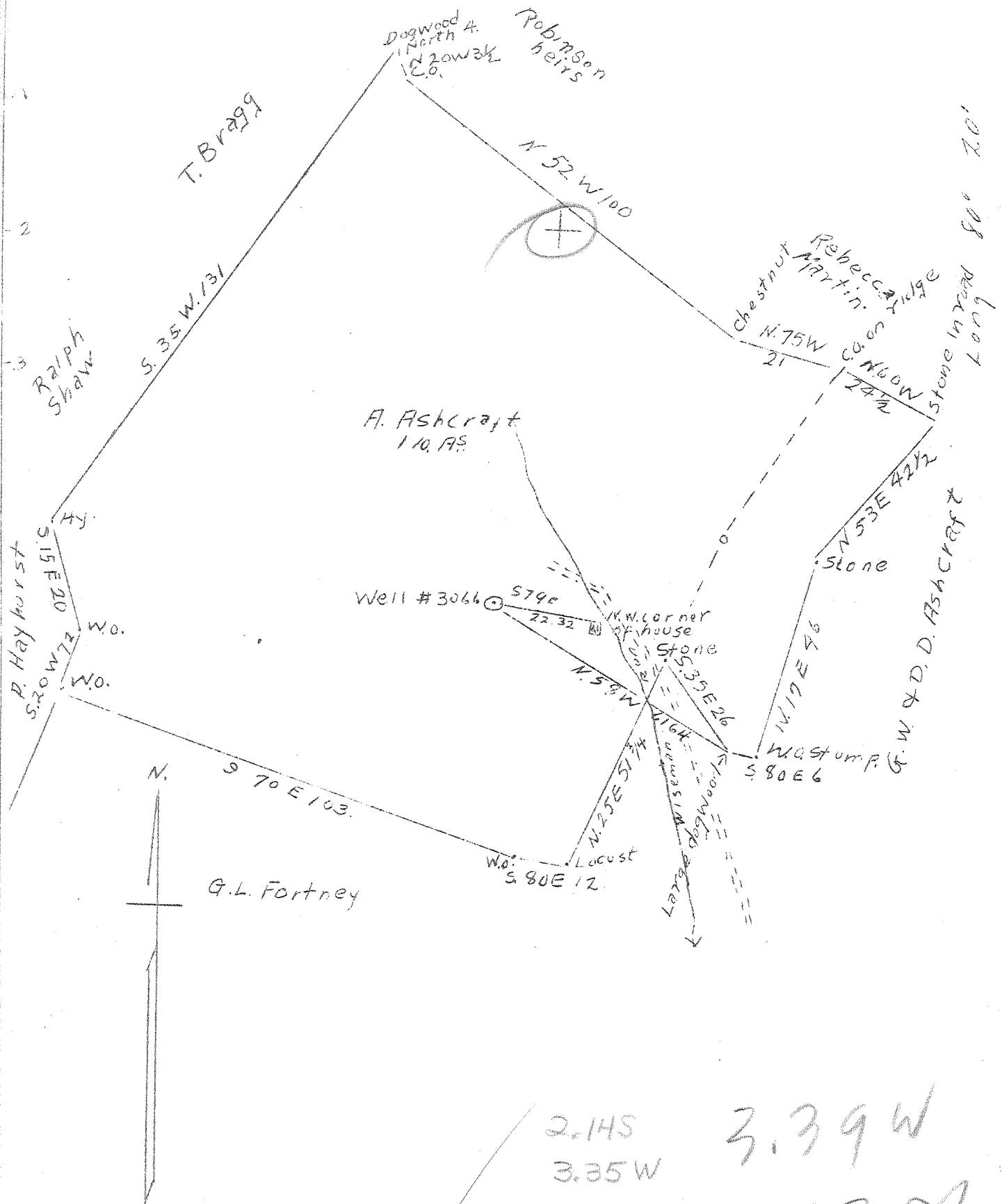


Lat. 39° 30'



NOV 19 1946

2.145  
 3.35 W  
 3.39 W  
 2.17

ABANDONMENT X

COMPANY A. M. SNIDER  
 ADDRESS GARRISON, PA.  
 FARM ABRAHAM ASHCRAFT  
 TRACT ONE ACRES 110 LEASE NO. 707  
 WELL (FARM) NO. 1 SERIAL NO. 3066  
 ELEVATION (S.L.) 1293  
 QUADRANGLE CLARKSBURG  
 COUNTY MARION DISTRICT MANNINGTON  
 ENGINEER A. L. HEADLEY  
 ENGINEER'S REG. NO. \_\_\_\_\_  
 FILE NO. \_\_\_\_\_ DRAWING NO. \_\_\_\_\_  
 DATE 10/15/46 SCALE 1"=500'

STATE OF WEST VIRGINIA  
 DEPARTMENT OF MINES  
 OIL AND GAS DIVISION

WELL LOCATION MAP

FILE NO. MAR - 452 A

+ DENOTES LOCATION OF WELL ON U.S. TOPOGRAPHIC MAPS, SCALE 1 TO 62,500 LATITUDE AND LONGITUDE LINES BEING REPRESENTED BY BORDER LINES AS SHOWN.

- DENOTES ONE INCH SPACES ON BORDER LINE OF ORIGINAL TRACING.

ABRAHAM ASHCRAFT No. 1 (3066) - A. M. SNIDER - MAR-452-A



COPY 536

STATE OF WEST VIRGINIA  
DEPARTMENT OF MINES  
OIL AND GAS DIVISION

WELL RECORD

Permit No. 4500-A

Oil or Gas Well (KIND)

Company A. M. Snider  
 Address Garrison, Pa.  
 Farm Abraham Ashcraft Acres 110  
 Location (waters) \_\_\_\_\_  
 Well No. 3066 Elev. 1293'  
 District Mannington County Marion  
 The surface of tract is owned in fee by \_\_\_\_\_  
 Address \_\_\_\_\_  
 Mineral rights are owned by \_\_\_\_\_  
 Address \_\_\_\_\_  
 Drilling commenced \_\_\_\_\_  
 Drilling completed December 26, 1913  
 Date Shot \_\_\_\_\_ From \_\_\_\_\_ To \_\_\_\_\_  
 With \_\_\_\_\_  
 Open Flow \_\_\_\_\_ /10ths Water in \_\_\_\_\_ Inch  
 \_\_\_\_\_ /10ths Merc. in \_\_\_\_\_ Inch  
 Volume \_\_\_\_\_ Cu. Ft.  
 Rock Pressure \_\_\_\_\_ lbs. \_\_\_\_\_ hrs.  
 Oil \_\_\_\_\_ bbls., 1st 24 hrs.  
 Fresh water \_\_\_\_\_ feet \_\_\_\_\_ feet  
 Salt water \_\_\_\_\_ feet \_\_\_\_\_ feet

| Casing and Tubing | Used in Drilling | Left in Well | Packers        |
|-------------------|------------------|--------------|----------------|
| Size              |                  |              | Kind of Packer |
| 16                |                  |              |                |
| 18                |                  |              |                |
| 10                |                  | 688          | Size of        |
| 8 1/4             |                  | 1657         |                |
| 6 5/8             |                  | 1970         | Depth set      |
| 5 3/16            |                  | 2826         |                |
| 3                 |                  |              | Perf. top      |
| 2                 |                  | 2855         | Perf. bottom   |
| Liners Used       |                  |              | Perf. top      |
|                   |                  |              | Perf. bottom   |

CASING CEMENTED \_\_\_\_\_ SIZE \_\_\_\_\_ No. Ft. \_\_\_\_\_ Date \_\_\_\_\_  
 COAL WAS ENCOUNTERED AT \_\_\_\_\_ FEET \_\_\_\_\_ INCHES  
 \_\_\_\_\_ FEET \_\_\_\_\_ INCHES FEET \_\_\_\_\_ INCHES  
 \_\_\_\_\_ FEET \_\_\_\_\_ INCHES FEET \_\_\_\_\_ INCHES

| Formation        | Color | Hard or Soft | Top  | Bottom | Oil, Gas or Water | Depth Found      | Remarks |
|------------------|-------|--------------|------|--------|-------------------|------------------|---------|
| Pittsburgh       | Coal  |              | 618  | 625    |                   |                  |         |
| Dunkard Sand     |       |              | 1074 | 1205   |                   |                  |         |
| Salt Sand        |       |              | 1426 | 1595   |                   |                  |         |
| Maxon Sand       |       |              | 1663 | 1708   |                   |                  |         |
| Big Injun        |       |              | 1978 | 2134   |                   | Gas 2013-2017    |         |
| Gantz Sand       |       |              | 2450 | 2470   |                   |                  |         |
| Fifty-foot Sand  |       |              | 2490 | 2515   |                   |                  |         |
| Thirty Foot Sand |       |              | 2555 | 2603   |                   |                  |         |
| Stray Sand       |       |              | 2770 | 2835   |                   |                  |         |
| Gordon Sand      |       |              | 2835 | 2854   |                   | Gas 2835 - 2843' |         |
| Total Depth      |       |              |      | 2855   |                   |                  |         |