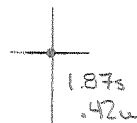


Latitude

Longitude



Topo Location

7.5' Loc. \_\_\_\_\_ 15' Loc. \_\_\_\_\_  
 \_\_\_\_\_ (calc.) \_\_\_\_\_

Company \_\_\_\_\_

Farm \_\_\_\_\_

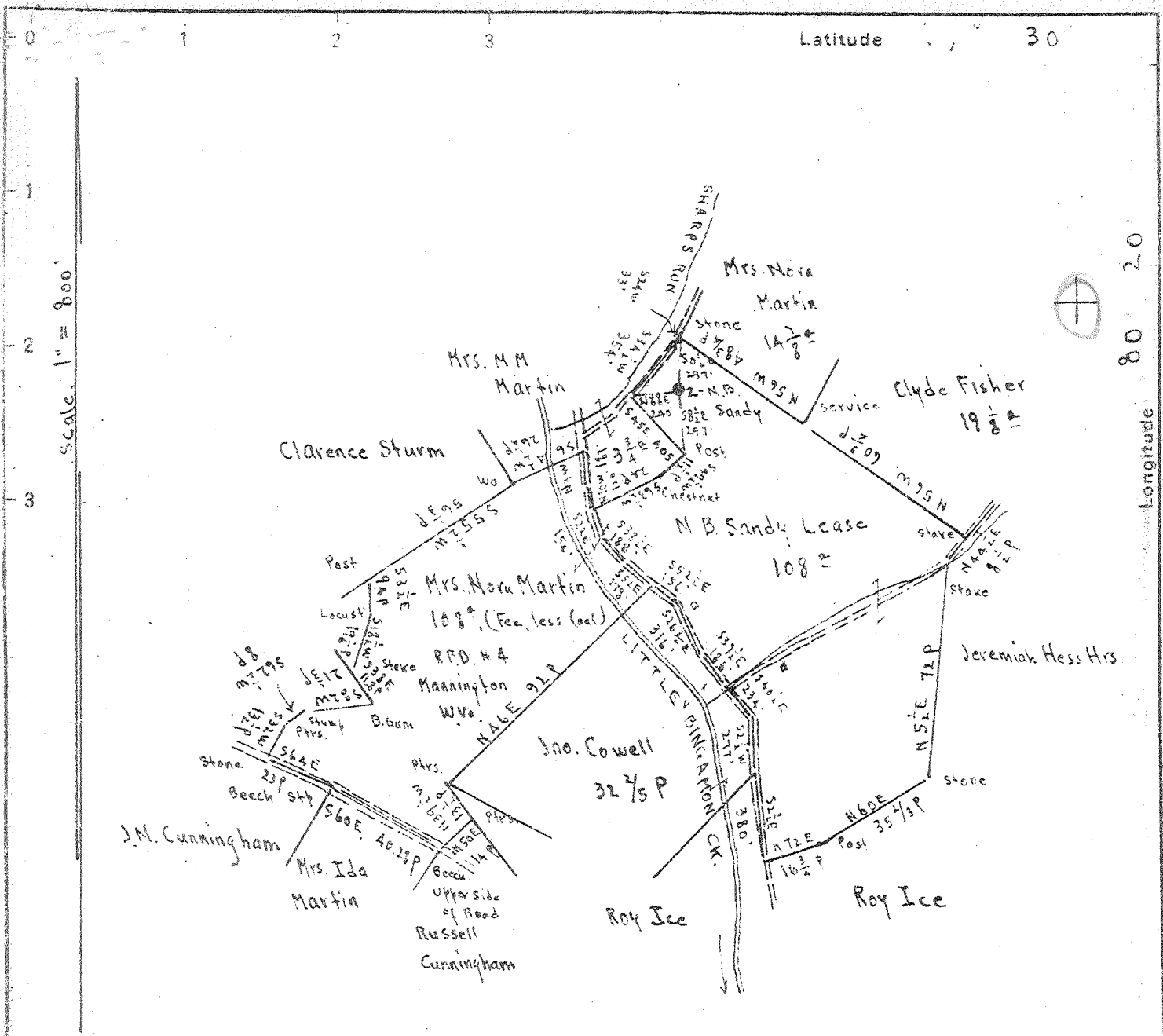
15' Quad \_\_\_\_\_  
(sec.)

7.5' Quad Shunston

District Lincoln

WELL LOCATION PLAT

County 049 Permit 30442



Pittsburgh Coal belongs to  
Four States Coal Co.

Address: "The Colonial Trust Co.,  
Agent of the Stockholders of  
The Bank of Pittsburgh."  
Pittsburgh, Pa.

New Location...  
Drill Deeper...  
Abandonment... X

✓ JUL - 9 1948

1.885 0.53W  
0.53W  
1.9 P  
Squares N1-2 E 15-16

Company Rad Supply Co.  
Address Salem, W.Va.  
Farm N.B. Sandy  
Tract \_\_\_\_\_ Acres 108<sup>±</sup> Lease No. \_\_\_\_\_  
Well (Farm) No. 2 Serial No. \_\_\_\_\_  
Elevation (Spirit Level) Floor 1126.38 Ground 1123.38  
Quadrangle Clarksburg  
County Marion District Lincoln  
Engineer E.C. Tabler  
Engineer's Registration No. \_\_\_\_\_  
File No. \_\_\_\_\_ Drawing No. \_\_\_\_\_  
Date July 16<sup>th</sup> 1945 Scale 1" = 800'

STATE OF WEST VIRGINIA  
DEPARTMENT OF MINES  
OIL AND GAS DIVISION  
CHARLESTON

WELL LOCATION MAP  
FILE NO. MAR-442-A

+ Denotes location of well on United States  
Topographic Maps, scale 1 to 62,500. Lat-  
itude and longitude lines being represented  
by border lines as shown.

- Denotes one inch spaces on border line  
of original tracing.

N.B. SANDY NO. 2 -

RAAD SUPPLY Co., - MAR-442-A



521

STATE OF WEST VIRGINIA  
DEPARTMENT OF MINES  
OIL AND GAS DIVISION

WELL RECORD

Permit No. 442-A Oil or Gas Well \_\_\_\_\_ (KIND)

Company RAAD SUPPLY COMPANY  
Address 184 E. Main St., Salem, W. Va.  
Farm N. B. Sandy Acres 103  
Location (waters) \_\_\_\_\_  
Well No. 2 Elev. 1123.38  
District Lincoln County Marion  
The surface of tract is owned in fee by Mrs. Nora Martin  
R.F.D. No. 4 Address Mannington, W. Va.  
Mineral rights are owned by Four States Coal Co.  
The Colonial Trust Co., Agent of the  
Stockholders of The Bank of Pittsburgh  
Pittsburgh, Pa.  
Drilling completed \_\_\_\_\_  
Date Shot No Record from \_\_\_\_\_ To \_\_\_\_\_  
With \_\_\_\_\_  
Open Flow /10ths Water in \_\_\_\_\_ Inch  
/10ths Merc. in \_\_\_\_\_ Inch  
Volume \_\_\_\_\_ Cu. Ft.  
Rock Pressure \_\_\_\_\_ lbs. \_\_\_\_\_ hrs.  
Oil \_\_\_\_\_ bbls., 1st 24 hrs.  
Fresh water \_\_\_\_\_ feet \_\_\_\_\_ feet  
Salt water \_\_\_\_\_ feet \_\_\_\_\_ feet

Casing and Tubing	Used in Drilling	Left in Well	Packers
Size			
16			Kind of Packer
13			
10	411'	411'	Size of
8 1/4	1690'	1690'	
6 5/8	1924'	1924'	Depth set
5 3/16	1933'	1933'	
3			Perf. top
2	2616'	2616'	Perf. bottom
Liners Used			Perf. top
5 1/2 x 5	192' 7"	192' 7"	Perf. bottom

CASING CEMENTED No SIZE \_\_\_\_\_ No. Ft. \_\_\_\_\_ Date \_\_\_\_\_  
COAL WAS ENCOUNTERED AT 372 FEET \_\_\_\_\_ INCHES  
\_\_\_\_\_ FEET \_\_\_\_\_ INCHES FEET \_\_\_\_\_ INCHES  
\_\_\_\_\_ FEET \_\_\_\_\_ INCHES FEET \_\_\_\_\_ INCHES

Formation	Color	Hard or Soft	Top	Bottom	Oil, Gas or Water	Depth Found	Remarks
NOTE: Well plugged back to 2616', June 1910 - Lead plug at 2616'. Former total depth - 2813' - Present total depth 2616'.							
Conductor			16'				
Pittsburgh Coal			372				
Sand			700	720'			
Big Dunkard			915	955			
Sand			1020	1145			
Gas Sand			1165	1260			
Salt Sand			1345	1452			
Little Lime			1630	1650			
Pencil Cave			1650	1660			
Big Lime			1660	1752			
Big Injun			1752	1885			
Gas			1862		Gas		
Sand			2050	2305			
50' Sand			2310	2370			
Gas			2315		Gas		
Sand			2522	2535			
Gordon Stray			2547	2570			

Formation	Color	Hard or Soft	Top	Bottom	Oil, Gas or Water	Depth Found	Remarks
Gordon Sand			2586	2618			
Oil & Gas			2590		Oil & Gas		
Gas			2604		Gas		
Total Depth				<del>2618</del> 2813			

Date June 24, 1946

APPROVED Road Supply Co., Owner

By J. M. Road  
(Title)