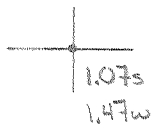


Latitude

Longitude



Topo Location

7.5' Loc. \_\_\_\_\_ 15' Loc. \_\_\_\_\_  
 \_\_\_\_\_ (calc.) \_\_\_\_\_

Company Hope

Farm CJ Lough #538

15' Quad \_\_\_\_\_  
(sec.)

7.5' Quad Mannington

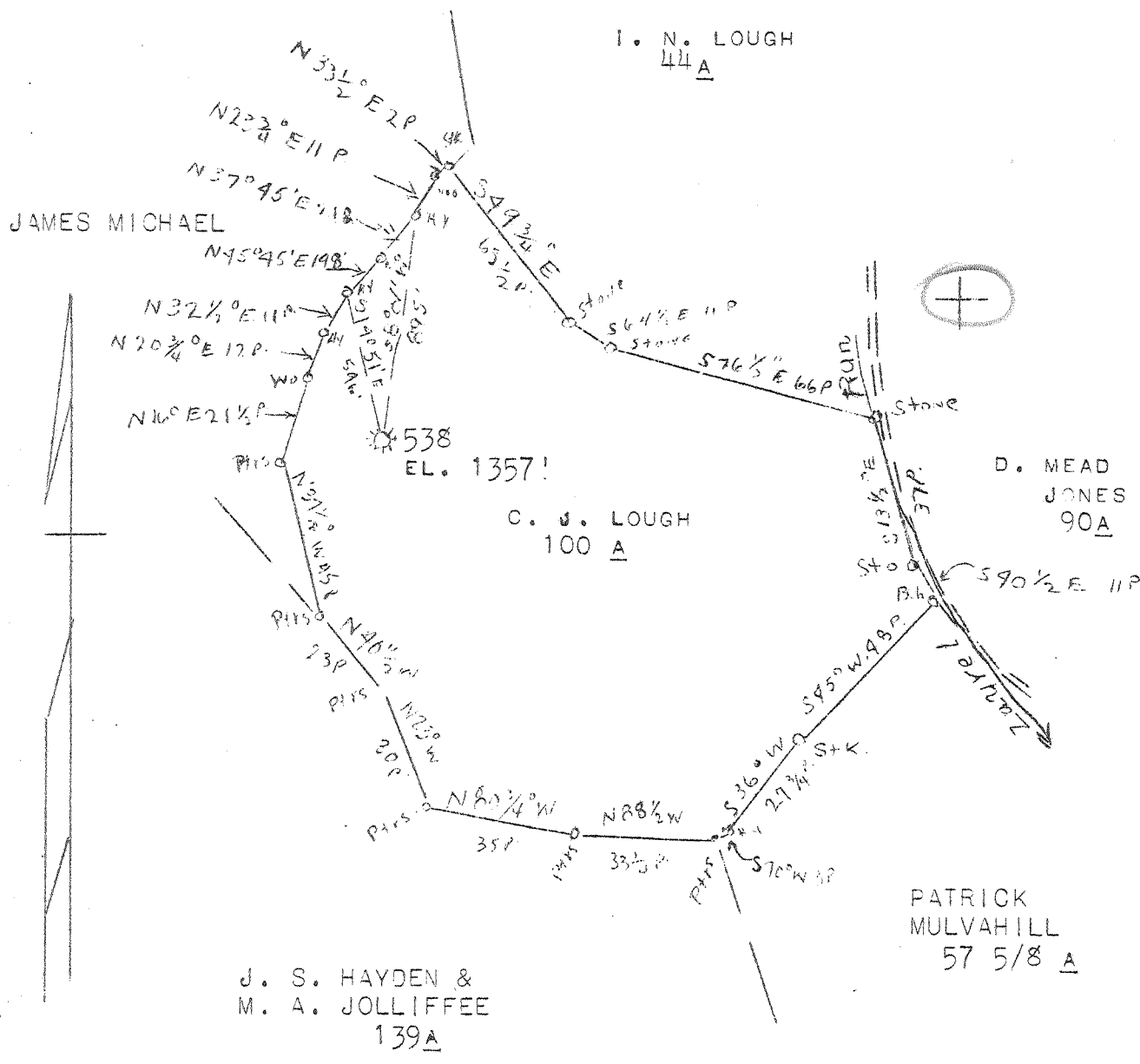
District Lincoln

WELL LOCATION PLAT

County 049 Permit 30437

LATITUDE 39° 35'

LONGITUDE 80° 15'



NEW LOCATION  
DRILL DEEPER  
ABANDONMENT X

MAP SH. 27 SO N 5E19 FB 783 P 33-34

✓  
 MAR 19 1946  
 3.825 1.51 W  
 1.50 W 3.88 A

COMPANY	HOPE NATURAL GAS CO.
ADDRESS	CLARKSBURG, W. VA.
FARM	C. J. LOUGH
TRACT	ACRES 100 LEASE NO. 1869
WELL (FARM) NO.	SERIAL NO. 538
ELEVATION (SPIRIT LEVEL)	1357'
QUADRANGLE	MANNINGTON
COUNTY	MARION DIST. LINCOLN
ENGINEER	W. M. BOWERS
ENGINEER'S REGISTRATION NO.	900
FILE NO.	DWG. NO.
DATE	SCALE 1" 40 POLES

STATE OF WEST VIRGINIA
DEPARTMENT OF MINES
OIL AND GAS DIVISION
CHARLESTON
WELL LOCATION MAP
FILE NO. MAR 437 A
+ DENOTES LOCATION OF WELL ON U. S. TOPOGRAPHIC MAPS, SCALE 1 TO 62,500, LATITUDE AND LONGITUDE LINES BEING REPRESENTED BY BORDER LINES AS SHOWN.
- DENOTES ONE INCH SPACES ON BORDER LINE OF ORIGINAL TRACING.

C. J. LOUGH NO. 538 - HOPE NAT. GAS CO. - MAR-437-A



513

STATE OF WEST VIRGINIA  
DEPARTMENT OF MINES  
OIL AND GAS DIVISION

WELL RECORD

Permit No. 437-A ~~Oil~~ or Gas Well \_\_\_\_\_ (KIND)

Company Hope Natural Gas Company.  
Address 445 West Main St. Clarksburg, W. Va.  
Farm C.J. Lough Acres 100  
Location (waters) \_\_\_\_\_  
Well No. 538 Elev. 1357  
District Lincoln County Marion  
The surface of tract is owned in fee by \_\_\_\_\_  
Address \_\_\_\_\_  
Mineral rights are owned by \_\_\_\_\_  
Address \_\_\_\_\_  
Drilling commenced June 15, 1904  
Drilling completed September 10, 1904  
Date Shot \_\_\_\_\_ From \_\_\_\_\_ To \_\_\_\_\_  
With \_\_\_\_\_  
Open Flow \_\_\_\_\_ /10ths Water in \_\_\_\_\_ Inch  
\_\_\_\_\_ /10ths Merc. in \_\_\_\_\_ Inch  
Volume \_\_\_\_\_ Cu. Ft.  
Rock Pressure \_\_\_\_\_ lbs. \_\_\_\_\_ hrs.  
Oil \_\_\_\_\_ bbls., 1st 24 hrs.  
Fresh water \_\_\_\_\_ feet \_\_\_\_\_ feet  
Salt water 1612 feet \_\_\_\_\_ feet

Casing and Tubing	Used in Drilling	Left in Well	Packers
Size			
16			Kind of Packer
18			
10	1121	Pulled	Size of
8 1/4	1889	1889	
6 3/8	1965	1965	Depth set
5 3/16	2565	2565	
3			Perf. top
2	3072	Pulled	Perf. bottom
Liners Used			Perf. top
			Perf. bottom

CASING CEMENTED Not cemented SIZE \_\_\_\_\_ No. Ft. \_\_\_\_\_ Date \_\_\_\_\_

COAL WAS ENCOUNTERED AT 114 FEET 48 INCHES  
196 FEET 24 INCHES 264 FEET 60 INCHES  
535 FEET 84 INCHES 660 FEET 108 INCHES

Formation	Color	Hard or Soft	Top	Bottom	Oil, Gas or Water	Depth Found	Remarks
Coal			114	118			
Coal			196	198			
Coal			201	?			
Coal			264	269			
Mapletown Coal			535	542			
Pittsburgh Coal			660	669			
Little Dunkard			1119	1145			
Big Dunkard			1180	1215			
Gas sand			1493	1518			
Salt sand			1598	1678	water	1612	
Little Lime			1910	1920			
Pencil cave			1920	1928			
Big Lime			1928	2010			
Big Injun			2110 <sup>2010</sup>	2130	show gas	2020	
Squeew			2140	2285			
Gentz			2560	2585			
Fifty foot			2585	2635	gas	2590- 2600	
Thirty foot			2650	2685			
Red rock			2735	2745			
Gordon Stray			2850	2870			
Gordon			2900	2920			
Fourth			2925	2945			
Fifth			3039	3049	gas	3044	
Total depth				3054			

