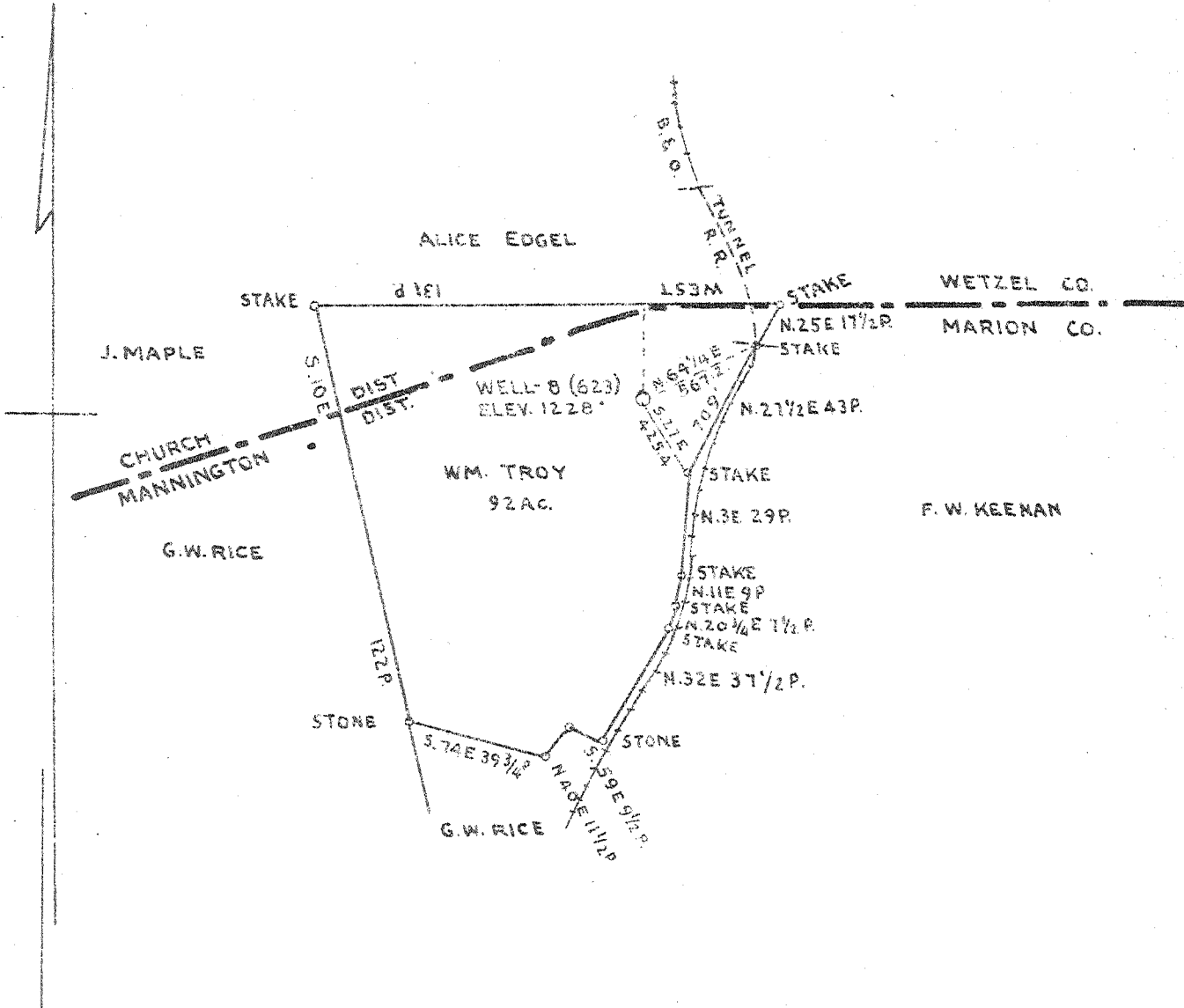


80-25
+



COAL OWNED BY UNION TRUST CO. PITTSBURGH PA.

NEW LOCATION
 DRILL DEEPER
 ABANDONMENT

1.86 S
0.2 W

0.21 W
1.89 S

NOV - 5 1944

COMPANY NATIONAL SUPPLY COMPANY
 ADDRESS LOGAN, OHIO.
 FARM WM. TROY
 TRACT ACRES 92 LEASE No.
 WELL (FARM) No. 2 SERIAL No. 8 (623)
 ELEVATION (SPIRIT LEVEL) 1228'00
 QUADRANGLE MANNINGTON
 COUNTY MARION DISTRICT MANNINGTON
 ENGINEER *J. L. M...*
 ENGINEER'S REGISTRATION No.
 FILE No. DRAWING No. U-1-267 (N)
 DATE MARCH 30 1944 SCALE 1" = 800'

STATE OF WEST VIRGINIA
 DEPARTMENT OF MINES
 OIL AND GAS DIVISION
 CHARLESTON

WELL LOCATION MAP

FILE No. MAR-406-A

+ DENOTES LOCATION OF WELL ON UNITED STATES TOPOGRAPHIC MAPS, SCALE 1 TO 62,500, LATITUDE AND LONGITUDE LINES BEING REPRESENTED BY BORDER LINES AS SHOWN

0 DENOTES ONE INCH SPACES ON BORDER LINE OF ORIGINAL TRACING.

WM, TROY No. 2 (8-623?) - NATIONAL SUPPLY Co. - MAR-406-A



STATE OF WEST VIRGINIA
DEPARTMENT OF MINES
OIL AND GAS DIVISION

487

Ab
406-A

WELL RECORD

Permit No. 406-A Oil or Gas Well 011 (KIND)

Company National Supply Company
 Address Logan, Ohio
 Farm Wm. Troy Acres 92
 Location (waters)
 Well No. 8 = 623 Elev. 1228 ft.
 District Mannington County Marion
 The surface of tract is owned in fee by
 Address
 Mineral rights are owned by National Supply Co.,
 Address Logan, Ohio
 Drilling commenced April 8, 1909
 Drilling completed May 21, 1909
 Date Shot 1918 From 3169 To 3179
 With 20 Quarts
 Open Flow /10ths Water in InCh
 /10ths Merc. in InCh
 Volume Cu. Ft.
 Rock Pressure lbs hrs.
 Oil bbls., 1st 24 hrs.
 Fresh water feet feet
 Salt water feet feet

Casing and Tubing	Used in Drilling	Left in Well	Packers
Size			
16			Kind of Packer
18			
10	325'		Size of
8 1/4	1550'		
6 5/8	2340'	2340'	Depth set
5 3/16	2962'	2962'	
3			Perf. top
2			Perf. bottom
Liners Used	4"		Perf. top
	4" liner from 3011' to 3187'		Perf. bottom

CASING CEMENTED SIZE No. Ft. Date
 COAL WAS ENCOUNTERED AT 1014' FEET INCHES
 1125 FEET INCHES FEET INCHES
 FEET INCHES FEET INCHES

Formation	Color	Hard or Soft	Top	Bottom	Oil, Gas or Water	Depth Found	Remarks
Buff Sand			716	760			
Mapletown Coal			1014				
Pittsburgh Coal			1125				
Big Dunkard Sand			1550	1600			
Gas Sand			1871	1951			
Salt Sand			2055	2125			
Maxon Sand			2245	2275			
Pencil Cave			2275	2282			
Big Lime			2340	2400			
Big Injun Sand			2400	2587			
Gantz Sand			2951	3022			
Fifty Foot Sand			3065	3107			
Campbells Run			3115	3120			
Thirty Foot Sand			3159	3187			
Gordon Stray			3207	3219			
Gordon Sand			3230	3255			
Total Depth				3259			

Tools lost in Gordon Sand at 3259'. Broken Jars, left one half of jars, stem and bit in the hole. Hole filled up to 3187' in Thirty Foot Sand and shot at 3169' to 3179' in Thirty Foot. Shot with 20 quarts, Total Depth now 3187'. 4" liner set on bottom 3187' with bottom perforated and steel ball collar on top of liner.

