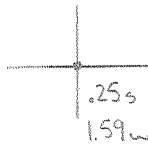


Latitude



Longitude

Topo Location

7.5' Loc. _____ 15' Loc. _____
 _____ (calc.) _____

Company _____

Farm _____

15' Quad _____
(sec.)

7.5' Quad Shumston

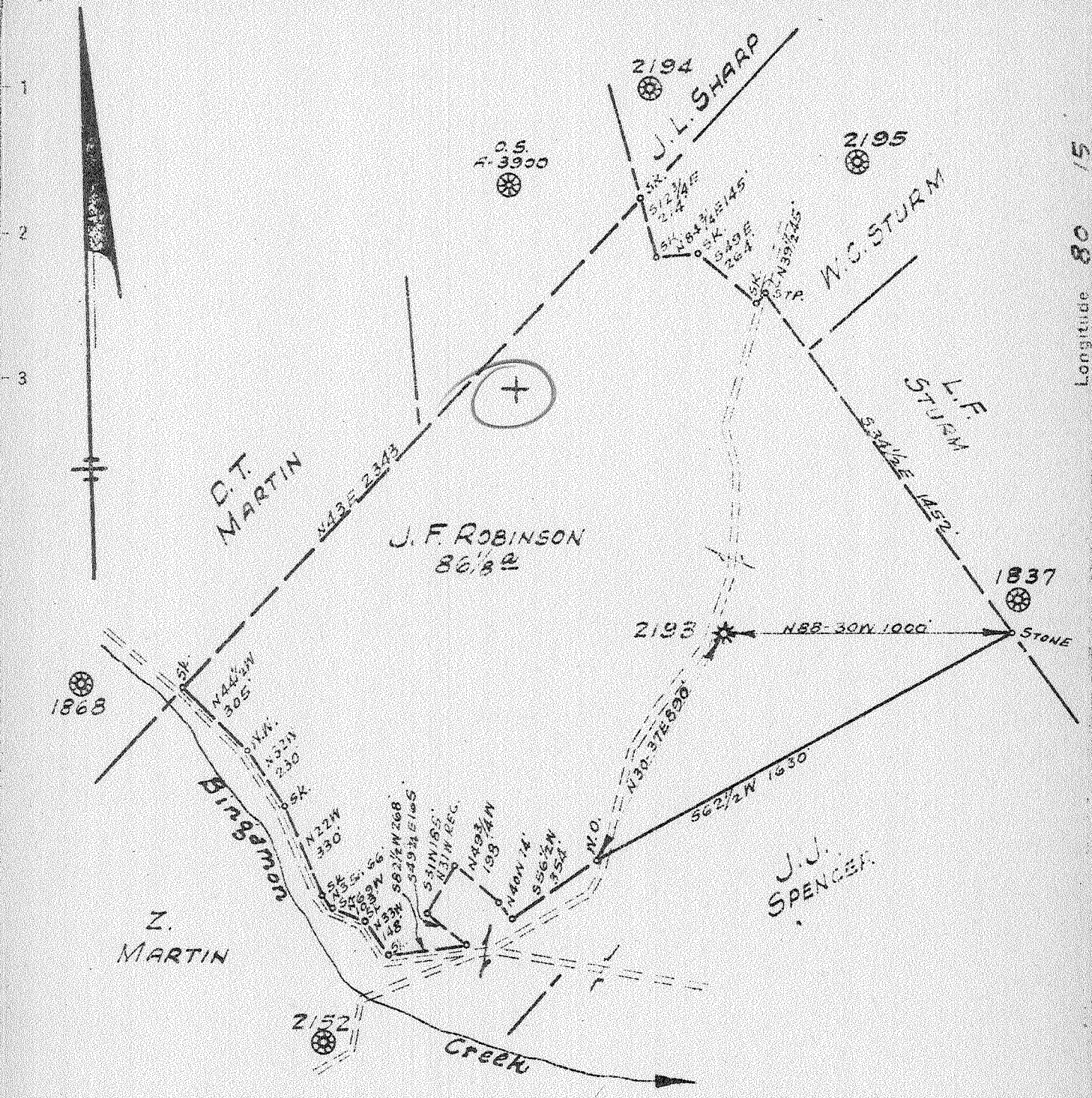
District Lincoln

WELL LOCATION PLAT

County 049 Permit 30388

Latitude 39 30

Longitude 80 15



New Location
 Drill Deeper
 Abandonment

3.95W 4.01W
 OCT 25 1943
 3.22S 3.22S

Company PITTSBURGH & W.VA. GAS Co.
 Address CLARKSBURG W.VA.
 Farm J. F. ROBINSON
 Tract _____ Acres 86 Lease No. 3293
 Well (Farm) No. ONE Serial No. 2193
 Elevation (Spirit Level) 1020' VA.
 Quadrangle CLARKSBURG N.E. 14
 County MARION District LINCOLN
 Engineer F.S. Mallory
 Engineer's Registration No. 1022
 File No. V-126, P-60 Drawing No. _____
 Dat. OCT 7, 1943 Scale 1"=500'

STATE OF WEST VIRGINIA
 DEPARTMENT OF MINES
 OIL AND GAS DIVISION
 CHARLESTON

WELL LOCATION MAP
 FILE NO. MAR-388-A

+ Denotes location of well on United States Topographic Maps, scale 1 to 62,500, latitude and longitude lines being represented by border lines as shown.

- Denotes one inch spaces on border line of original tracing.

A



STATE OF WEST VIRGINIA
DEPARTMENT OF MINES
OIL AND GAS DIVISION

464

Ab 3588-A

WELL RECORD

Permit No. _____ Oil or Gas Well "GAS"
(KIND)

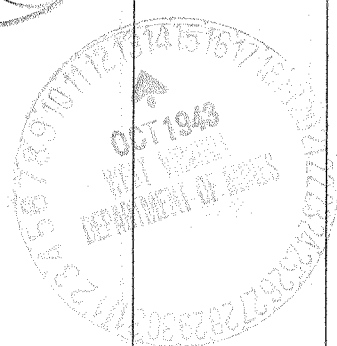
Company Pittsburgh & West Va Gas Company.
Address Clarksburg, West Va.,
Farm J. F. Robinson Acres 85
Location (waters) Clarksburg N/E. 1-4
Well No. 2193 Elev. 1020' VA
District Lincoln County Marion
The surface of tract is owned in fee by Harry L. Sturn
Worthington, Address West Va.,
Mineral rights are owned by B. B. Robinson et al.
Caldwell, Summers Co. Address Kansas
Drilling commenced October 16, 1907
Drilling completed December 9, 1907
Date Shot _____ From _____ To _____
With _____

| Casing and Tubing | Used in Drilling | Left in Well | Packers |
|-------------------|------------------|--------------|----------------|
| Size | | | Kind of Packer |
| 16 | | | |
| 13 | | | |
| 10 | 200' | Pulled. | Size of |
| 8 1/4 | 640' | 640' | |
| 6 3/8 | 1225' | 1225' | Depth set |
| 5 3/16 | 1752' | 1752' | |
| 3 | | | Perf. top |
| 2 | | | Perf. bottom |
| Liners Used | | | Perf. top |
| | | | Perf. bottom |

Open Flow _____ /10ths Water in _____ Inch
_____ /10ths Merc. in _____ Inch
Volume _____ Cu. Ft.
Rock Pressure _____ lbs _____ hrs.
Oil _____ bbls., 1st 24 hrs.
Fresh water _____ feet _____ feet
Salt water _____ feet _____ feet

CASING CEMENTED _____ SIZE _____ No. Ft. _____ Date _____
COAL WAS ENCOUNTERED AT 30 FEET 60 INCHES
146 FEET 96 INCHES FEET INCHES
FEET INCHES FEET INCHES

| Formation | Color | Hard or Soft | Top | Bottom | Oil, Gas or Water | Depth Found | Remarks |
|-------------|-------|--------------|------|--------|-------------------|-------------|---------|
| Conductor | | | 0 | 12 | | | |
| Line | White | Hard | 12 | 30 | | | |
| M.T. Coal | Black | Soft | 30 | 35 | | | |
| Slate | White | " | 35 | 55 | | | |
| Line | " | Hard | 55 | 105 | | | |
| Slate | Black | Soft | 105 | 146 | | | |
| Pgh. Coal | " | " | 146 | 154 | | | |
| Slate | " | " | 154 | 280 | | | |
| Sand | White | Hard | 280 | 290 | | | |
| Slate | Black | Soft | 290 | 305 | | | |
| Red Rock | Red | " | 305 | 345 | | | |
| Slate | Black | " | 345 | 380 | | | |
| Red Rock | Red | " | 380 | 417 | | | |
| Line | White | Hard | 417 | 427 | | | |
| Slate | Black | Soft | 427 | 470 | | | |
| Sand | White | Hard | 470 | 495 | | | |
| Slate | Black | Soft | 495 | 525 | | | |
| Sand | White | Hard | 525 | 540 | | | |
| Slate | Black | Soft | 540 | 570 | | | |
| Line | White | Hard | 570 | 605 | | | |
| Slate | Black | Soft | 605 | 620 | | | |
| Line | Blue | Hard | 620 | 636 | | | |
| Big Dunkard | White | Hard | 636 | 696 | | | |
| Line | " | " | 696 | 710 | | | |
| Slate | Black | Soft | 710 | 750 | | | |
| Line | Blue | Hard | 750 | 785 | | | |
| Slate | White | Soft | 785 | 790 | | | |
| Line | Black | Medium | 790 | 847 | | | |
| Gas Sand | White | Hard | 847 | 914 | | | |
| Sand | Black | " | 914 | 964 | | | |
| Salt Sand | White | " | 964 | 982 | | | |
| Slate | Black | Soft | 982 | 1055 | | | |
| Salt Sand | White | Hard | 1055 | 1097 | | | |
| Slate | Black | Soft | 1097 | 1148 | Water | 1084' | |
| Salt Sand | " | Hard | 1148 | 1255 | | | |
| Slate | Black | Soft | 1255 | 1285 | | | |
| Slate Line | | Hard&Soft | 1285 | 1295 | | | |
| Slate | Red | | 1295 | 1445 | | | |
| Line | White | Hard | 1445 | 1465 | | | |



| Formation | Color | Hard or Soft | Top | Bottom | Oil, Gas or Water | Depth Found | Remarks |
|-------------------|-------|--------------|------|--------|-------------------|-------------|---------|
| Pencil Cave | Black | Soft | 1465 | 1470 | | | |
| Big Lime | White | Hard | 1470 | 1564 | | | |
| Big Injun | " | " | 1564 | 1630 | | | |
| Lime | " | " | 1630 | 2030 | Gas | 1640' | |
| 50 Ft. Sand | " | " | 2030 | 2065 | | | |
| Slate | Red | Soft | 2065 | 2225 | | | |
| 30 Ft. Sand | White | Hard | 2225 | 2230 | | | |
| Slate | Red | Soft | 2230 | 2255 | | | |
| Slate-Lime Shells | Red | Open | 2255 | 2335 | | | |
| Stray Sand | Red | Hard | 2335 | 2365 | | | |
| Slate | " | Soft | 2365 | 2370 | | | |
| Gordon Sand | White | Hard | 2370 | 2390 | | | |
| Slate Shells | " | " | 2390 | 2440 | | | |
| Slate | " | Soft | 2440 | 2543 | | | |
| 5th. Sand | | | 2543 | 2548 | Gas | 2546' | |
| Total Depth | | | | 2570 | | | |

Date October 4th, 1943

PITTSBURGH & WEST VA GAS COMPANY.

APPROVED

By

J. F. [Signature]
(Title)

Owner

194

FORM G39-14263

Record of Well No. 2193 Located on Jose A. P. P. P. Farm July 12 1907
Licoles District Marion County West Va State _____
 Division AV District No. 11 Drilled under well Order 834
 Rig built by J. H. Craig Began _____ 19____ Completed Oct 1 1907
 Well drilled by Wm. Beahart Began Oct 16 1907 Completed Dec 9 1907
 Depth of Well 2571 feet Size of Hole 5 3/16 Producing Gas
 Elev. 1020 G.L. 66 93

| CASED WITH | | | REMARKS |
|--------------|----------------|----------------------------|--------------------|
| AMOUNT | SIZE | KIND | |
| <u>16'</u> | <u>13 1/2"</u> | <u>wood</u> | |
| <u>200'</u> | <u>10"</u> | <u>Steel</u> | <u>Reclaimed</u> |
| <u>640'</u> | <u>8 1/2"</u> | <u>375 diam 265000</u> | |
| <u>1225'</u> | <u>6 5/8"</u> | <u>Steel</u> | |
| <u>1952'</u> | <u>5 3/16"</u> | <u>Steel</u> | |
| <u>2568'</u> | <u>2"</u> | | <u>Aug 28-1910</u> |

COAL VEINS 154-162

| FORMATIONS | | | | | |
|----------------------|-------|-------------------------------|-------------|-------------|--|
| FORMATION | COLOR | OPEN OR CLOSE HARD OR SOFT | TOP | BOTTOM | REMARKS GAS-OIL-WATER (THICKNESS OF PAY) |
| <u>Big Diamond</u> | | | <u>590</u> | <u>696</u> | |
| <u>Clas Sand</u> | | | | <u>847</u> | |
| <u>Salt "</u> | | | <u>914</u> | <u>1035</u> | <u>Water 912</u> |
| <u>Salt "</u> | | | <u>1097</u> | <u>1255</u> | |
| <u>Big Limestone</u> | | | <u>1470</u> | | |
| <u>Big Limestone</u> | | | <u>1661</u> | <u>1630</u> | <u>2120/674</u> |
| <u>White Rock</u> | | | <u>2060</u> | <u>2020</u> | |
| <u>White Rock</u> | | | <u>2230</u> | <u>2200</u> | |
| <u>White Rock</u> | | | <u>2330</u> | <u>2305</u> | |
| <u>London Sand</u> | | | <u>2360</u> | <u>2370</u> | |
| <u>White Rock</u> | | | <u>2391</u> | <u>2425</u> | |
| <u>White Sand</u> | | | <u>2545</u> | <u>2549</u> | <u>" 2546</u> |

(184) Farmington

