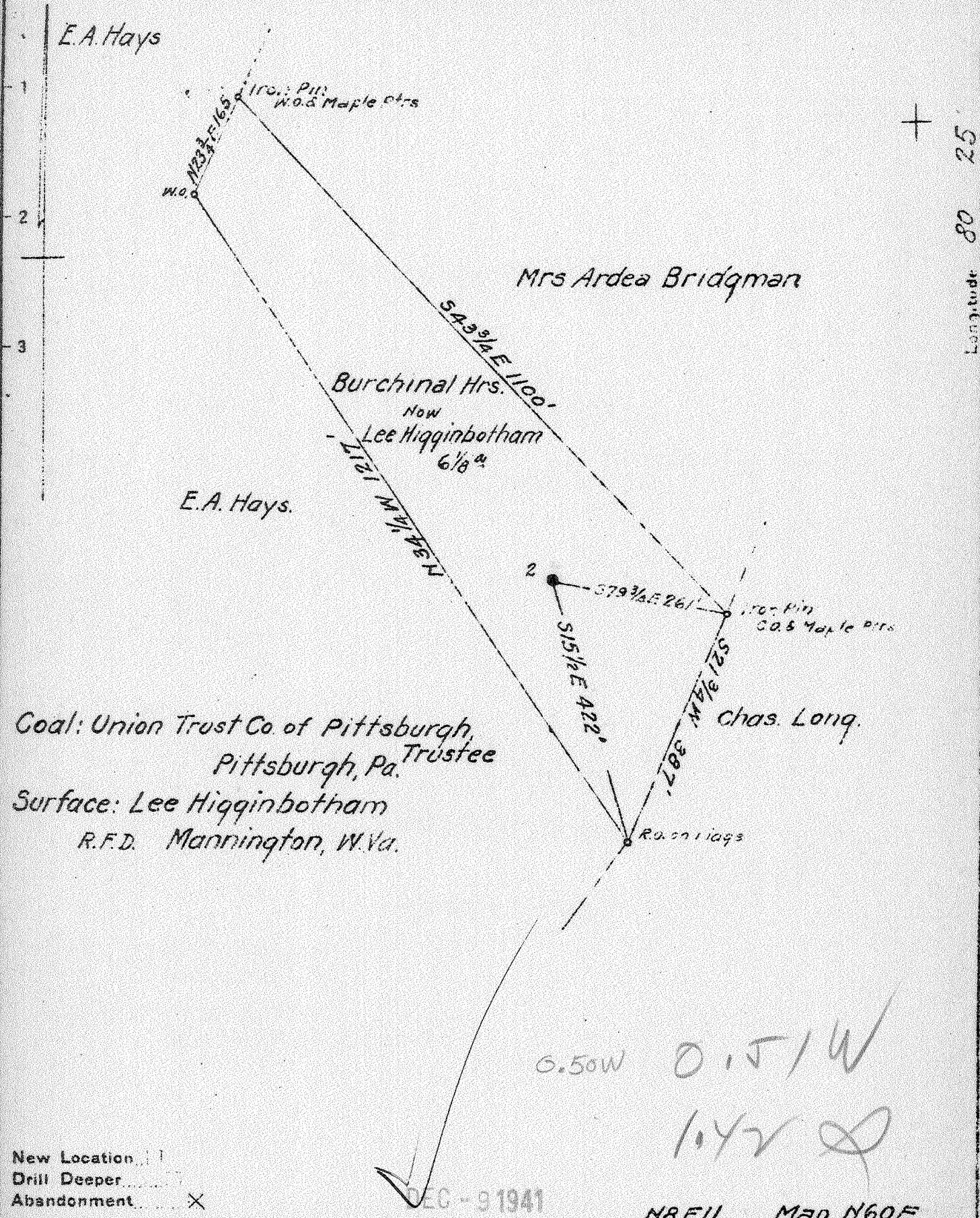


Latitude 39° 35'

Longitude 80° 25'



Coal: Union Trust Co. of Pittsburgh,
Pittsburgh, Pa. Trustee
Surface: Lee Higginbotham
R.F.D. Mannington, W.Va.

0.50W
0.51W
1.042

New Location

Drill Deeper

Abandonment

Company South Penn Natural Gas Co.

Address Parkersburg, W. Va.

Farm Burchinal Hrs.

Tract _____ Acres 51 3/8 Lease No. 70137

Well (Farm) No. 2 Serial No. _____

Elevation (Spirit Level) 1329.08

Quadrangle Mannington

County Marion District Mannington

Engineer E.C. Tabler

Engineer's Registration No. _____

File No. _____ Drawing No. _____

Date Oct 27, 1941 Scale 1" = 200'

STATE OF WEST VIRGINIA
DEPARTMENT OF MINES
OIL AND GAS DIVISION
CHARLESTON

WELL LOCATION MAP
FILE NO. MAR-323A

+ Denotes location of well on United States Topographic Maps, scale 1 to 62,500, latitude and longitude lines being represented by border lines as shown.

- Denotes one inch spaces on border line of original tracing.

BURCHINAL HRS, NO. 2 - SOUTH PENN NAT, GAS CO, - MAR-323-A

STATE OF WEST VIRGINIA
DEPARTMENT OF MINES
OIL AND GAS DIVISION

WELL RECORD

400

Ab 303-A

Permit No. _____ Oil or Gas Well _____
(KIND)

Company	SOUTH PENN NATURAL GAS COMPANY	Casing and Tubing	Used in Drilling	Left in Well	Packers
Address	Union Trust Bldg. Parkersburg, W. Va.	Size			
Farm	Burchinal Heirs Acres. 51-3/8	16			Kind of Packer
Location (waters)	Bartholomew Fork	13			
Well No.	2 Elev. 1329.08	10	367'		Size of
District	Mannington County Marion	8 1/4	1612'		Depth set
The surface of tract is owned in fee by	Lee Higginbotham R. F. D. Mannington, W. Va.	6 5/8	2318'		Perf. top
Mineral rights are owned by	Mabel F. Vance, et al Mannington, West Virginia.	5 3/16	3010'		Perf. bottom
Drilling commenced	5/3/17 Drilled Deeper 12/1/19	Liners Used			Perf. top
Drilling completed	6/14/17 12/31/19	2			Perf. bottom
Date shot	see below Depth of shot ----	Cond.	12		Perf. top
Open Flow	/10ths Water in ---- Inch				Perf. bottom
	/10ths Merc. in ---- Inch				
Volume	---- Cu. Ft.	CASING CEMENTED	SIZE	No. Ft.	Date
Rock Pressure	---- lbs. ---- hrs.				
Oil	5 bbls., 1st 24 hrs.	COAL WAS ENCOUNTERED AT	FEEET	INCHES	
Fresh water	---- feet ---- feet		FEEET	INCHES	FEEET INCHES
Salt water	1983 feet ---- feet		FEEET	INCHES	FEEET INCHES

Formation	Color	Hard or Soft	Top	Bottom	Oil, Gas or Water	Depth Found	Remarks
Conductor				12			
Bluff Sand			639	684			
Mapletown Coal			945	950			
Pittsburgh Coal			1050	1058			
Little Dunkard			1450	1520			
Big Dunkard			1530	1570			
Lime			1577	1597			
Gas Sand			1740	1795			
1st Salt Sand			1800	1950			
2nd Salt Sand			1855	1938			
3rd Salt Sand			1945	2000			
Maxon Sand			2107	2215	Water	1983	
Little Lime			2238	2253			
Pencil Cave			2277	2284			
Big Lime			2284	2370			
Big Injun			2370				
Total Depth				2455			
Drilled Deeper							
Commenced drilling				2455			
Big Injun			2370	2510			
Fifty Foot Sand			2981	3031			
Thirty Foot Sand			3064				
Total Depth				3083	Oil	3074-78	
Shot Record:		6/21/17	20 qts				
		1/13/20	10 qts				
		3/ 3/20	20 qts				
		3/30/20	30 qts				

